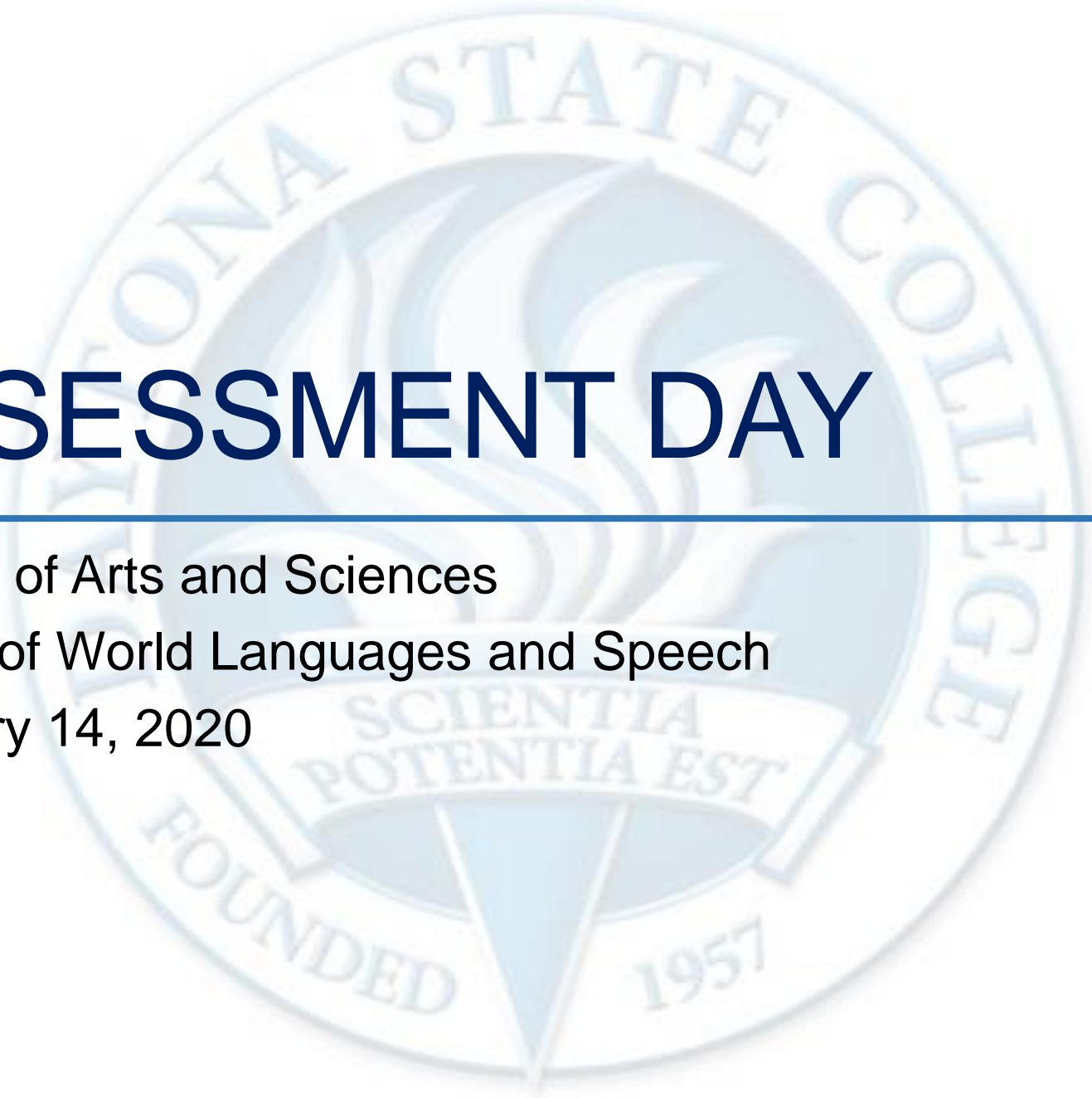


ASSESSMENT DAY

College of Arts and Sciences

School of World Languages and Speech

February 14, 2020



Academic Assessment

	LEVEL	FOCUS	CONDUCTED BY	FREQUENCY
Academic Success Committee	Program	<ul style="list-style-type: none"> Quality of assessment practices 	Committee of peers	Years 1 & 2
Instructional Program Review	Program / Cluster	<ul style="list-style-type: none"> Enrollment, retention, completion Industry certifications and job placement Program budget and staffing Advisory committees Curriculum changes 	Committee of peers	Year 3
Assessment Day	Course/ Program	<ul style="list-style-type: none"> Enrollment by demographics Graduation and retention Average class size Course success rate Placement rate SLOs, PLOs and ILOs 	Program Chair and Faculty	Years 1, 2, 3

Last Assessment Day – Action Items

01/25/2019:

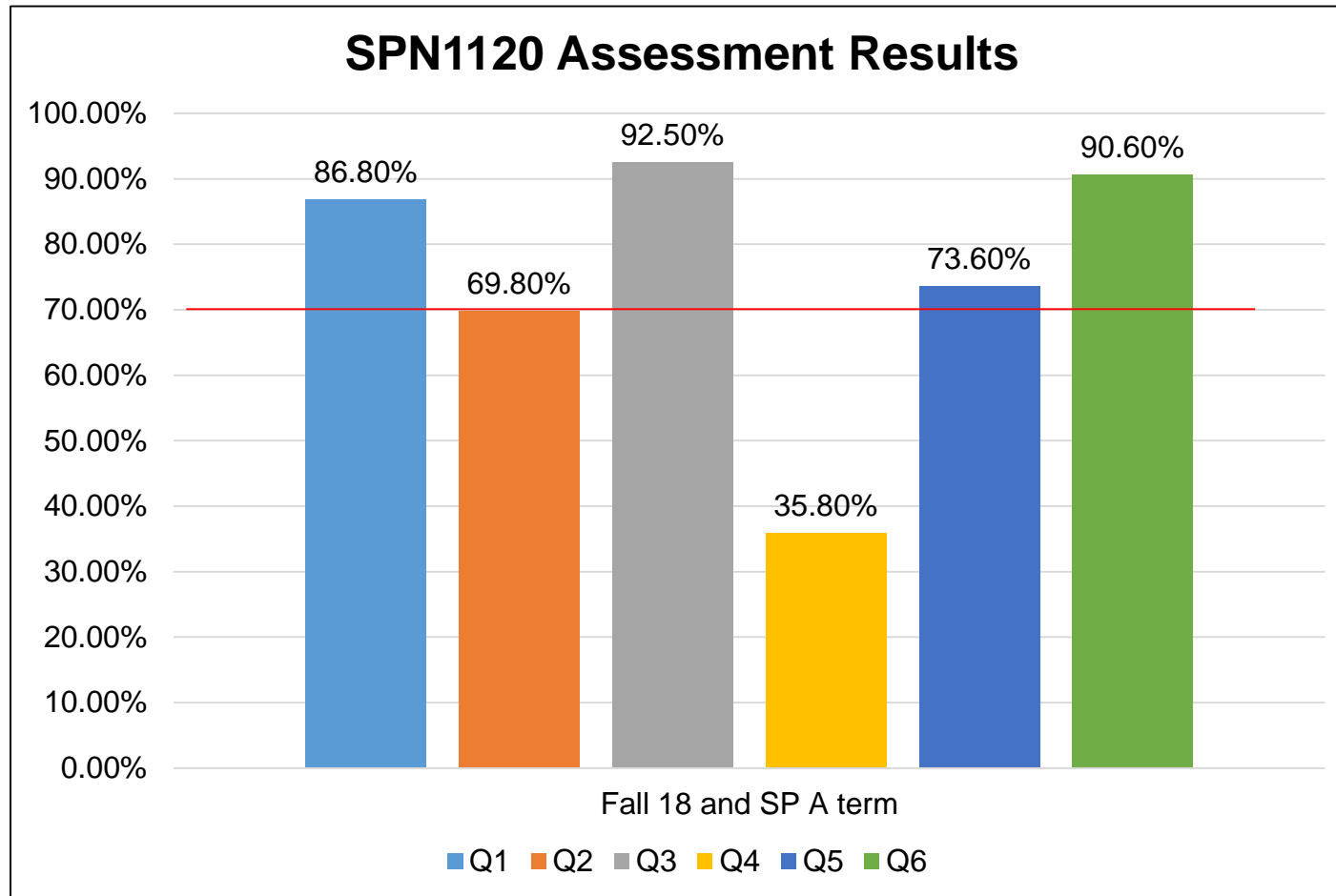
- Spanish attempt to pilot open book testing for online students;
- Identify reasons for high Fs and Ws (Speech);
- Develop rubric to measure speech delivery;
- Can more courses be part of Gateway (Speech)?;
- ASL try 50/50, 8 week course as part of Guaranteed schedule (Flagler)

Course Assessment Data – SPN1120

The student will be able to:

1. Use Spanish structures and vocabulary appropriate to level to create original content (e.g., questions, statements, messages, poems, emails). (1)
2. Use Spanish structures and vocabulary appropriate to level and according to course content/outline to respond correctly. (2)
3. Compare cultural differences and similarities of the Spanish-speaking world and US. (3)
4. Use technology to reinforce Spanish structure and vocabulary, to research course materials, and to present findings. (4)

Course Assessment Data – SPN1120



2018-2019 Success Rate: 66%

SLO: Students will be able to identify/use correctly the adjective that agrees in number (singular or plural) and gender (masculine or feminine) with the noun modified.

Course Assessment Data – SPN1121- No report

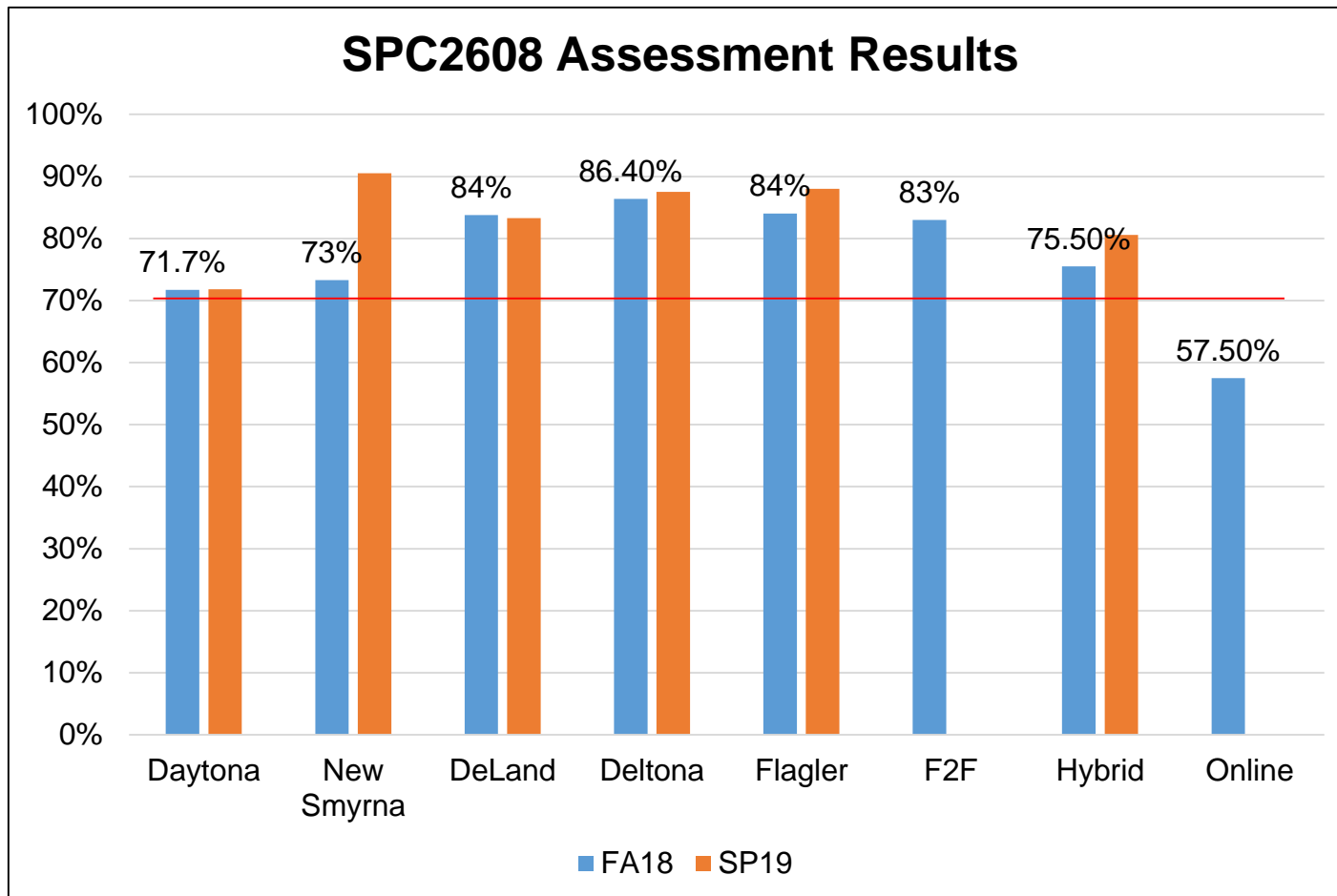
The student will be able to:

1. Use Spanish structures and vocabulary appropriate to level to create original content (e.g., questions, statements, messages, poems, emails). (1)
2. Use Spanish structures and vocabulary appropriate to level and according to course content/outline to respond correctly. (2)
3. Compare cultural differences and similarities of the Spanish-speaking world and US. (3)
4. Use technology to reinforce Spanish structure and vocabulary, to research course materials, and to present findings. (4)

Course Assessment Data – SPC2608

1. Gain confidence by utilizing techniques for managing public speaking anxiety. (1,2,3,4)
2. Organize and structure a speech in a logical and grammatically correct manner.
3. Identify authoritative sources of information and to properly share research through effective oral citations and a correctly formatted MLA or APA reference page.
4. Increase listening skills and retention of information.
5. Establish and demonstrate persuasive techniques. (1,2,3,4)

Course Assessment Data – SPC2608



2018-2019 Success Rate: 82%

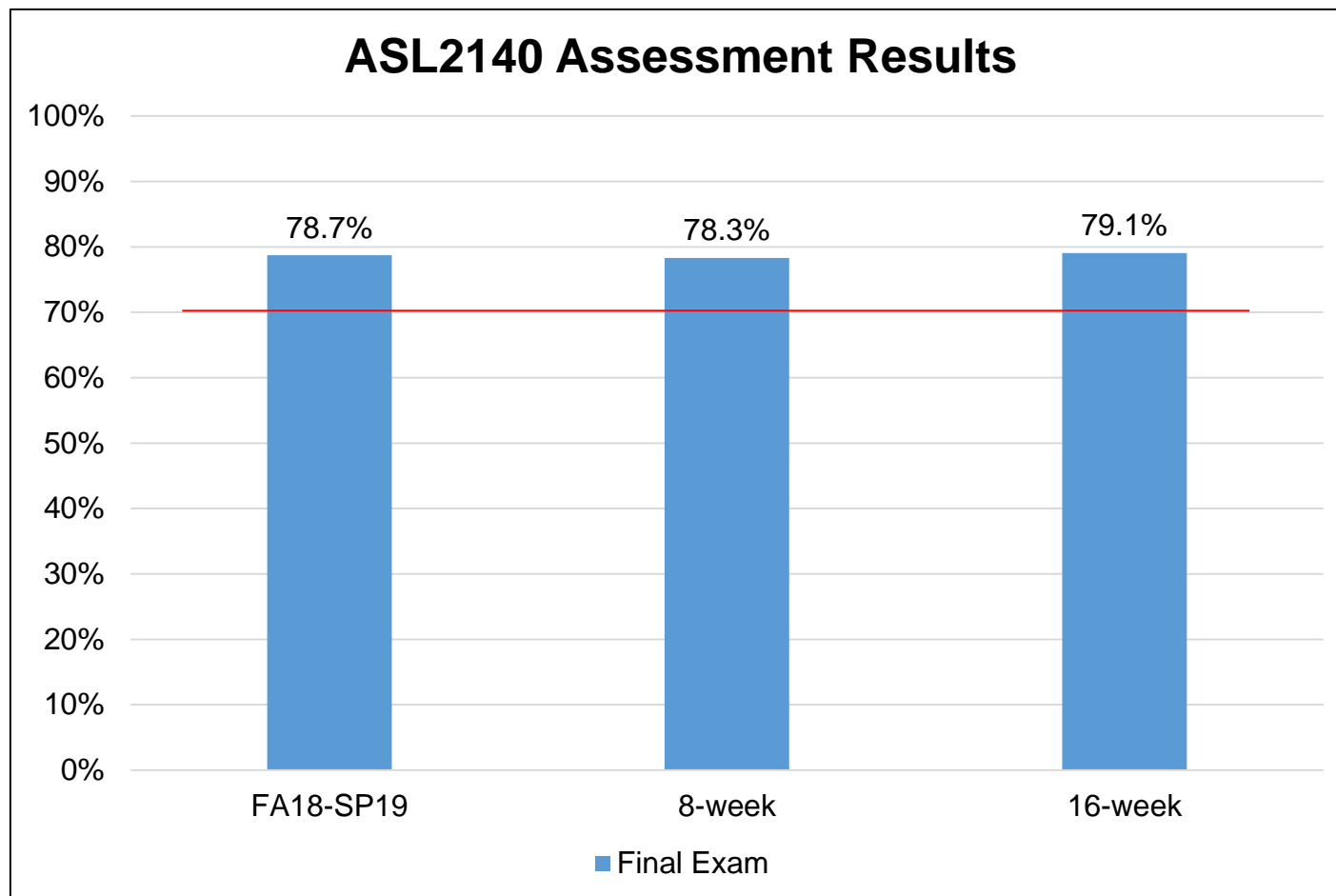
5. Establish and demonstrate persuasive techniques.

Course Assessment Data – ASL2140

The student will be able to:

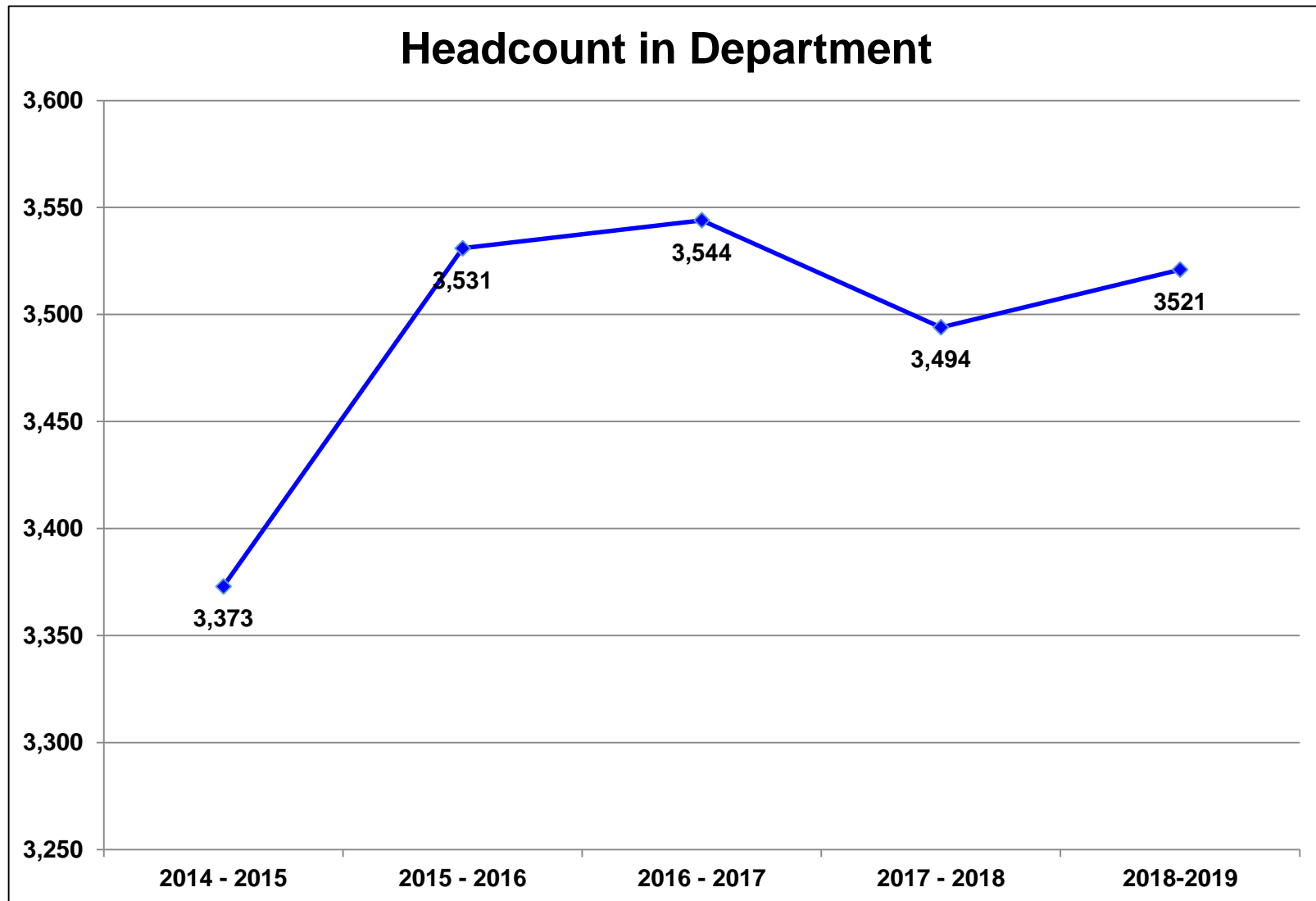
1. Use ASL structures and vocabulary appropriate to level to create original expressive content (e.g., questions, statements, descriptions) (1)
2. Use ASL structures and vocabulary appropriate to level and according to course content/outline to receive input and express output correctly. (2)
3. Compare the differences and similarities of the Deaf and hearing cultures in the US. (3)
4. Use technology to reinforce ASL structure and vocabulary, to research course materials, and to present findings. (4)

Course Assessment Data – ASL2140



2018-2019 Success Rate: 72%

3. Compare the differences and similarities of the Deaf and hearing cultures in the US



Dual Enrollment count for 2018-2019: 435

Source: IR Program Assessment Data

Headcount in department includes students taking courses in the department.




Course Success Rate

Courses	2015-2016		2016-2017		2017-2018		2018-2019	
	Attempted	% Successful	Attempted	% Successful	Attempted	% Successful	Attempted	% Successful
ASL1430	12	83%	14	71%				
ASL2140	290	70%	354	71%	238	72%	319	72%
ASL2150	203	91%	189	89%	198	85%	174	87%
ASL2160	18	89%	34	85%	20	85%	15	87%
ASL2200	13	85%	12	100%	16	94%	9	100%
ASL2510			7	100%				
EAP1501							12	92%
EAP1620					14	79%	13	100%
EAP1640					11	91%	15	73%
EAP1660							11	91%
FRE1120	45	69%	52	46%	28	64%	21	81%
FRE1121	19	63%	29	69%	19	63%	13	92%
FRE2220	10	90%	12	100%	7	100%	10	100%
FRE2221	3	100%	12	100%	7	100%	7	100%
GER1120	25	76%	25	68%	23	78%	13	85%
GER1121	16	88%	17	65%	14	100%	8	100%
GER2220	3	67%						
GER2905	3	67%						
ITA2905	4	100%	2	100%				
SPC2608	2763	85%	2802	84%	2741	83%	2833	82%
SPN1120	479	56%	470	60%	540	67%	501	66%
SPN1121	288	73%	316	71%	346	78%	297	79%
SPN2220	14	100%	28	100%	16	100%	3	100%
SPN2221	10	100%	19	100%	16	100%		
SPN2905					1	100%		
Total	4218	80%	4394	80%	4255	80%	4274	80%

■ Indicates a success rate of 90% or higher
■ Indicates a success rate between 70% and 89%
■ Indicates a success rate below 70%

Course Success Rate by Campus – Multiple Campuses Only

Courses and Campus		2015-2016		2016-2017		2017-2018		2018-2019	
		Attempted	% Successful	Attempted	% Successful	Attempted	% Successful	Attempted	% Successful
ASL2140	Daytona	160	65%	232	71%	189	72%	261	71%
	Deland	49	86%	54	85%	26	69%	21	81%
	Flagler/Palm Cst	51	63%	50	62%			20	70%
	New Smyrna Beach	30	80%	18	67%	23	74%	17	82%
ASL2150	Daytona	102	90%	89	88%	146	86%	152	88%
	Deland	38	92%	44	98%	33	91%	8	88%
	Flagler/Palm Cst	35	91%	25	96%				
	New Smyrna Beach	28	93%	31	77%	19	74%	14	71%
SPC2608	Daytona	1331	84%	1212	85%	1078	86%	1135	84%
	Deland	565	87%	556	86%	524	83%	499	85%
	Deltona	206	86%	230	87%	192	89%	164	84%
	Flagler/Palm Cst	385	87%	366	90%	386	89%	394	87%
	New Smyrna Beach	178	84%	182	90%	175	79%	238	83%
SPN1120	Daytona	296	51%	264	55%	239	75%	195	67%
	Deland	94	76%	90	77%	95	74%	74	76%
	Deltona	25	52%	50	78%	18	61%	23	57%
	Flagler/Palm Cst	18	50%	22	36%	38	63%	42	74%
	New Smyrna Beach	26	46%	21	67%	22	73%	8	75%
SPN1121	Daytona	140	80%	152	68%	164	82%	122	76%
	Deland	82	82%	57	88%	62	85%	51	73%
	Deltona	12	58%	43	88%	12	75%	14	79%
	Flagler/Palm Cst	15	47%	9	78%	19	68%	17	65%
	New Smyrna Beach			11	82%	15	87%		

 Indicates a success rate of 90% or higher
 Indicates a success rate between 70% and 89%
 Indicates a success rate below 70%

Online is excluded

Source: IR Program Assessment Data

School Course Success Rate by Campus – Overall

Campus	2015-2016		2016-2017		2017-2018		2018-2019	
	Attempted	% Successful	Attempted	% Successful	Attempted	% Successful	Attempted	% Successful
Daytona	2224	78%	2153	78%	2008	83%	2006	81%
Deland	828	86%	821	86%	222	86%	653	83%
Deltona	231	83%	323	85%	740	82%	201	81%
Flagler/Palm Cst	501	83%	472	84%	443	86%	473	84%
New Smyrna Beach	277	79%	263	85%	254	78%	277	82%
Online					588	61%	664	69%
Total	4061*	80%	4032*	82%	4255	80%	4274	80%

*Online is excluded

- Indicates a success rate of 90% or higher
- Indicates a success rate between 70% and 89%
- Indicates a success rate below 70%

Course Success Rate by Instructional Method – Multiple Methods Only (1 of 2)

Courses and Instructional Method		2015-2016		2016-2017		2017-2018		2018-2019	
		Attempted	% Successful	Attempted	% Successful	Attempted	% Successful	Attempted	% Successful
ASL2140	Hybrid					44	84%	90	72%
	Lecture					194	70%	229	72%
ASL2150	Hybrid					49	88%	71	94%
	Lecture					149	85%	103	82%
FRE1120	Hybrid			34	58%	28	64%	21	81%
	Lecture								
	Online			18	22%				
FRE1121	Hybrid			19	89%	19	63%	13	92%
	Lecture								
	Online			10	30%				
FRE2220	DIS	7	86%						
	Lecture	3	100%			7	100%	6	100%
	Online							1	100%

■ Indicates a success rate of 90% or higher
■ Indicates a success rate between 70% and 89%
■ Indicates a success rate below 70%

Source: IR Program Assessment Data

Course Success Rate by Instructional Method – Multiple Methods Only (2 of 2)

Courses and Instructional Method		2015-2016		2016-2017		2017-2018		2018-2019		
		Attempted	% Successful	Attempted	% Successful	Attempted	% Successful	Attempted	% Successful	
SPC2608	Hybrid	231	85%	575	87%	768	84%	1090	82%	
	Lecture	2434	85%	1971	86%	1587	87%	1340	86%	
	Online	98	65%	256	63%	386	64%	403	67%	↑
SPN1120	Hybrid	459	56%	447	62%	412	73%	342	69%	
	Lecture									
	Online	20	60%	23	39%	128	49%	159	60%	↑
SPN1121	Hybrid	249	78%	272	76%	272	82%	204	75%	
	Lecture									
	Online	39	41%	44	34%	74	64%	93	88%	↑
SPN2220	Hybrid	10	100%							
	DIS	4	100%							
	Lecture			19	100%	16	100%			
	Online			9	100%			3	100%	
DSC	Hybrid		82%		81%		83%		82%	
	Lecture		80%		81%		83%		83%	
	Online		78%		76%		78%		80%	

■ Indicates a success rate of 90% or higher
■ Indicates a success rate between 70% and 89%
■ Indicates a success rate below 70%

Source: IR Program Assessment Data

School Course Success Rate by Instructional Method

Courses and Instructional Method	2015-2016		2016-2017		2017-2018		2018-2019	
	Attempted	% Successful	Attempted	% Successful	Attempted	% Successful	Attempted	% Successful
DIS	21	86%	2	100%				
Hybrid	1044	69%	1389	76%	1629	81%	1852	79%
Lecture	2996	84%	2643	85%	2038	85%	1758	84%
Online	157	59%	360	56%	588	61%	664	69%
Total	4218	80%	4394	80%	4255	80%	4274	80%



■ Indicates a success rate of 90% or higher
■ Indicates a success rate between 70% and 89%
■ Indicates a success rate below 70%

Course Success Rates- Multiple Sessions or Sub-sessions Only (1 of 2)

Courses and Sub-session		2015-2016		2016-2017		2017-2018		2018-2019	
		Attempted	% Successful	Attempted	% Successful	Attempted	% Successful	Attempted	% Successful
ASL2140	A term							46	74%
	FA B term								
	Full term	153	71%	181	70%	124	69%	108	74%
	SP A term					44	84%	44	70%
	Full term	118	67%	150	73%	50	66%	86	64%
SU Full term	19	79%	23	78%	20	80%	35	86%	
ASL2150	FA B term							43	91%
	Full term	76	91%	70	89%	69	83%	20	85%
	SP B term					49	88%	28	100%
	Full term	104	91%	105	90%	54	80%	67	82%
SU Full term	23	91%	14	93%	26	100%	16	75%	
EAP1501	FA Full term							7	86%
	SP Full term							5	100%
EAP1620	FA Full term					10	80%	10	100%
	SP Full term					4	75%	3	100%
EAP1640	FA Full term					9	89%	11	73%
	SP Full term					2	100%	4	75%
EAP1660	FA Full term							8	100%
	SP Full term							3	67%
FRE1120	FA Full term	24	63%	39	41%	28	64%	21	81%
	SP A term	21	76%						
	Full term			13	62%				

■ Indicates a success rate of 90% or higher
■ Indicates a success rate between 70% and 89%
■ Indicates a success rate below 70%

Source: IR Program Assessment Data

Course Success Rates- Multiple Sessions or Sub-sessions Only (2 of 2)

Courses and Sub-session		2015-2016		2016-2017		2017-2018		2018-2019	
		Attempted	% Successful	Attempted	% Successful	Attempted	% Successful	Attempted	% Successful
SPC2608	A term	63	86%	152	90%	136	83%	170	88%
	FA B term	68	84%	142	85%	168	76%	135	80%
	Full term	992	86%	884	81%	906	82%	918	83%
	A term	124	84%	162	93%	166	86%	164	88%
	SP B term	145	83%	172	82%	162	78%	183	77%
	Full term	912	81%	784	80%	754	80%	747	78%
	SU Full term	459	90%	506	92%	449	90%	516	85%
SPN1120	A term	16	94%	46	74%	45	80%	46	70%
	FA B term					35	60%	15	60%
	Full term	226	50%	166	51%	176	60%	152	59%
	A term	30	70%	114	72%	85	71%	61	75%
	SP Full term	112	48%	49	45%	90	66%	143	62%
	SU Full term	95	66%	95	64%	109	76%	84	80%
SPN1121	B term	22	77%	40	85%	38	84%	37	59%
	FA Full term	39	85%	46	76%	60	82%	61	79%
	B term	23	91%	78	83%	67	73%	55	75%
	SP Full term	126	57%	87	54%	110	86%	95	84%
	SU Full term	78	85%	65	65%	71	63%	49	88%

■ Indicates a success rate of 90% or higher
■ Indicates a success rate between 70% and 89%
■ Indicates a success rate below 70%

Source: IR Program Assessment Data

School Course Success Rates by Sessions or Sub-sessions

Sessions & Sub-sessions	2015-2016		2016-2017		2017-2018		2018-2019		
	Attempted	% Successful	Attempted	% Successful	Attempted	% Successful	Attempted	% Successful	
FA	A term	79	87%	198	86%	181	82%	262	82%
	B term	90	82%	182	85%	242	75%	230	77%
	Full term	1,593	79%	1,489	76%	1,448	78%	1357	80%
SP	A term	175	81%	289	83%	295	81%	269	82%
	B term	187	82%	257	83%	278	79%	266	79%
	Full term	1,420	76%	1,276	77%	1,136	79%	1190	77%
SU	Full term	674	86%	703	85%	675	85%	700	84%
Total		4,218	80%	4,394	80%	4,255	80%	4,274	80%

■ Indicates a success rate of 90% or higher
■ Indicates a success rate between 70% and 89%
■ Indicates a success rate below 70%

Source: IR Program Assessment Data

Course Success Rates by IM and Sessions/Sub-sessions (1 of 3)

Course, IM and Session/Sub-session	2018-2019	
	Attempted	% Successful
ASL2140	319	72%
Lecture	229	72%
Summer 2018	35	86%
Fall 2018	108	74%
Full term	108	74%
Spring 2019	86	64%
Full term	86	64%
WA	44	70%
Spring 2019	44	70%
A term	44	70%
WE	46	74%
Fall 2018	46	74%
A term	46	74%
ASL2150	174	87%
Lecture	103	82%
Summer 2018	16	75%
Fall 2018	20	85%
Full term	20	85%
Spring 2019	67	82%
Full term	67	82%
WA	28	100%
Spring 2019	28	100%
B term	28	100%
WE	43	91%
Fall 2018	43	91%
B term	43	91%
ASL2160	15	87%
Lecture	15	87%
Fall 2018	15	87%
Full term	15	87%

Course, IM and Session/Sub-session	2018-2019	
	Attempted	% Successful
ASL2200	9	100%
Lecture	9	100%
Spring 2019	9	100%
Full term	9	100%
EAP1501	12	92%
Lecture	12	92%
Fall 2018	7	86%
Full term	7	86%
Spring 2019	5	100%
Full term	5	100%
EAP1620	13	100%
Lecture	13	100%
Fall 2018	10	100%
Full term	10	100%
Spring 2019	3	100%
Full term	3	100%
EAP1640	15	73%
Lecture	15	73%
Fall 2018	11	73%
Full term	11	73%
Spring 2019	4	75%
Full term	4	75%
EAP1660	11	91%
Lecture	11	91%
Fall 2018	8	100%
Full term	8	100%
Spring 2019	3	67%
Full term	3	67%
FRE1120	21	81%
WE	21	81%
Fall 2018	21	81%
Full term	21	81%

■ Indicates a success rate of 90% or higher
■ Indicates a success rate between 70% and 89%
■ Indicates a success rate below 70%

Course Success Rates by IM and Sessions/Sub-sessions (2 of 3)

Course, IM and Session/Sub-session	2018-2019	
	Attempted	% Successful
FRE1121	13	92%
WA	13	92%
Spring 2019	13	92%
Full term	13	92%
FRE2220	10	100%
Online	5	100%
Fall 2018	5	100%
Full term	5	100%
Lecture	5	100%
Fall 2018	5	100%
Full term	5	100%
FRE2221	7	100%
Online	1	100%
Spring 2019	1	100%
Full term	1	100%
Lecture	6	100%
Spring 2019	6	100%
Full term	6	100%
GER1120	13	85%
WE	13	85%
Fall 2018	13	85%
Full term	13	85%
GER1121	8	100%
WA	8	100%
Spring 2019	8	100%
Full term	8	100%

Course, IM and Session/Sub-session	2018-2019	
	Attempted	% Successful
SPC2608	2833	82%
Online	403	67%
Summer 2018	24	83%
Fall 2018	199	67%
Full term	199	67%
Spring 2019	180	66%
Full term	161	68%
B term	19	47%
Lecture	1340	86%
Summer 2018	192	90%
Fall 2018	632	88%
Full term	632	88%
Spring 2019	516	83%
Full term	516	83%
WE	1090	82%
Summer 2018	300	82%
Fall 2018	392	83%
Full term	87	77%
A term	170	88%
B term	135	80%
Spring 2019	398	81%
Full term	70	69%
A term	164	88%
B term	164	80%

■ Indicates a success rate of 90% or higher
■ Indicates a success rate between 70% and 89%
■ Indicates a success rate below 70%

Course Success Rates by IM and Sessions/Sub-sessions (3 of 3)

Course, IM and Session/Sub-session	2018-2019	
	Attempted	% Successful
SPN1120	501	66%
Online	159	60%
Summer 2018	24	88%
Fall 2018	69	57%
Full term	69	57%
Spring 2019	66	55%
Full term	66	55%
WA	77	69%
Spring 2019	77	69%
Full term	77	69%
WE	265	69%
Summer 2018	60	77%
Fall 2018	144	63%
Full term	83	60%
A term	46	70%
B term	15	60%
Spring 2019	61	75%
A term	61	75%

Course, IM and Session/Sub-session	2018-2019	
	Attempted	% Successful
SPN1121	297	79%
Online	93	88%
Summer 2018	25	96%
Fall 2018	22	68%
Full term	22	68%
Spring 2019	46	93%
Full term	46	93%
WA	49	76%
Spring 2019	49	76%
Full term	49	76%
WE	155	74%
Summer 2018	24	79%
Fall 2018	76	72%
Full term	39	85%
B term	37	59%
Spring 2019	55	75%
B term	55	75%
SPN2220	3	100%
Online	3	100%
Fall 2018	3	100%
Full term	3	100%
Grand Total	4274	80%

■ Indicates a success rate of 90% or higher
■ Indicates a success rate between 70% and 89%
■ Indicates a success rate below 70%

Course Success Rates by Race/Ethnicity (1 of 2)

Course and race/Ethnicity	2017-2018	2018-2019	
	% Successful	Attempted	% Successful
ASL2140		319	72%
American Indian/Alas	0%	2	50%
Asian	50%	1	100%
Black	59%	44	57%
Hispanic/Latino	69%	23	78%
Native Hawaiian/Paci		2	50%
Two or More Races	60%	13	62%
Unknown	0%	6	83%
White	77%	228	75%
ASL2150		174	87%
American Indian/Alas		1	100%
Asian	100%	2	100%
Black	83%	24	79%
Hispanic/Latino	86%	8	100%
Two or More Races	100%	7	86%
Unknown	100%	6	100%
White	85%	126	87%
ASL2160		15	87%
Hispanic/Latino	100%	3	67%
Two or More Races	100%	1	100%
White	77%	11	91%
ASL2200		9	100%
Hispanic/Latino	75%	2	100%
White	100%	7	100%
EAP1501		12	92%
Asian		3	100%
Hispanic/Latino		6	83%
White		3	100%

Course and race/Ethnicity	2017-2018	2018-2019	
	% Successful	Attempted	% Successful
EAP1620		13	100%
Asian	100%	1	100%
Hispanic/Latino	80%	8	100%
White	100%	4	100%
EAP1640		15	73%
Asian	100%	3	67%
Hispanic/Latino	100%	9	67%
White	100%	3	100%
EAP1660		11	91%
Asian		1	100%
Hispanic/Latino		8	88%
White		2	100%
FRE1120		21	81%
Black	60%	2	100%
Hispanic/Latino	0%	2	100%
Two or More Races	100%	1	100%
Unknown		2	50%
White	63%	14	79%
FRE1121		13	92%
Black	100%	1	100%
Hispanic/Latino	0%	1	100%
Two or More Races		1	0%
White	67%	10	100%
FRE2220		10	100%
Asian		1	100%
Hispanic/Latino	100%	2	100%
White	100%	7	100%
FRE2221		7	100%
Asian		1	100%
Hispanic/Latino	100%	2	100%
White	100%	4	100%

■ Indicates a success rate of 90% or higher
■ Indicates a success rate between 70% and 89%
■ Indicates a success rate below 70%

Course Success Rates by Race/Ethnicity (2 of 2)

Course and race/Ethnicity	2017-2018	2018-2019	
	% Successful	Attempted	% Successful
GER1120		13	85%
Asian	100%	1	100%
Hispanic/Latino	100%	2	50%
White	75%	10	90%
GER1121		8	100%
Asian	100%	1	100%
Hispanic/Latino	100%	1	100%
White	100%	6	100%
SPC2608		2833	82%
American Indian/Alas	80%	5	80%
Asian	89%	72	96%
Black	75%	323	76%
Hispanic/Latino	83%	467	81%
Native Hawaiian/Paci	100%	1	100%
Two or More Races	79%	132	77%
Unknown	68%	60	83%
White	67%	1773	83%
SPN1120		501	66%
American Indian/Alas	0%	3	67%
Asian	79%	16	69%
Black	56%	84	50%
Hispanic/Latino	84%	52	71%
Two or More Races	78%	17	71%
Unknown	90%	15	87%
White	67%	314	68%

Course and race/Ethnicity	2017-2018	2018-2019	
	% Successful	Attempted	% Successful
SPN1121		297	79%
Asian	82%	9	100%
Black	73%	47	66%
Hispanic/Latino	77%	27	78%
Two or More Races	79%	11	91%
Unknown	78%	10	80%
White	79%	193	80%
SPN2220		3	100%
Unknown		1	100%
White	100%	2	100%
Grand Total		4274	80%

■ Indicates a success rate of 90% or higher
■ Indicates a success rate between 70% and 89%
■ Indicates a success rate below 70%

Overall Course Success Rates by Race/Ethnicity

Course and Race/Ethnicity	2017-2018		2018-2019	
	Attempted	% Successful	Attempted	% Successful
American Indian/Alas	4	57%	11	73%
Asian	103	87%	112	92%
Black	362	70%	525	69%
Hispanic/Latino	484	82%	623	81%
Native Hawaiian/Paci	4	67%	3	67%
Two or More Races	115	80%	183	76%
Unknown	69	72%	100	84%
White	2263	81%	2717	81%
Grand Total	3404	80%	4274	80%

■ Indicates a success rate of 90% or higher
■ Indicates a success rate between 70% and 89%
■ Indicates a success rate below 70%

Course Success Rates for Guaranteed Sections

Course	2016-2017		2016-2017 Overall	2017-2018		2017-2018 Overall	2018-2019		2018-2019 Overall
	Attempted	% Successful		Attempted	% Successful		Attempted	% Successful	
FRE1120	13	62%	46%						
FRE1121	7	100%	69%						
SPC2608	338	88%	100%	230	83%	83%	236	81%	82%
SPN1120	93	66%	60%				63	67%	66%
SPN1121	63	86%	71%				22	55%	79%
Total	514	83%		230	83%	83%	321	76%	

■ Indicates a success rate of 90% or higher
■ Indicates a success rate between 70% and 89%
■ Indicates a success rate below 70%

Source: IR Program Assessment Data

Course Success Rates for Dual Enrolled Students

Course	2017-2018		2017-2018 Overall	2018-2019		2018-2019 Overall
	Attempted	% Successful		Attempted	% Successful	
ASL2140	13	92%	72%	29	90%	72%
ASL2150	9	100%	85%	24	100%	87%
ASL2160	1	100%	85%			87%
ASL2200	1	100%	94%	2	100%	100%
FRE1120				1	100%	81%
FRE2220	3	100%	100%	5	100%	92%
FRE2221	3	100%	100%	5	100%	100%
GER1120	3	100%	78%	2	100%	85%
GER1121	1	100%	100%	2	100%	100%
SPC2608	280	90%	83%	396	93%	82%
SPN1120	26	81%	67%	20	100%	66%
SPN1121	16	94%	78%	11	100%	79%
SPN2220	6	100%	100%	1	100%	100%
SPN2221	6	100%	100%			
Grand Total	368	91%	88%	498	94%	

■ Indicates a success rate of 90% or higher
■ Indicates a success rate between 70% and 89%
■ Indicates a success rate below 70%

Civitas

Explore courses where:

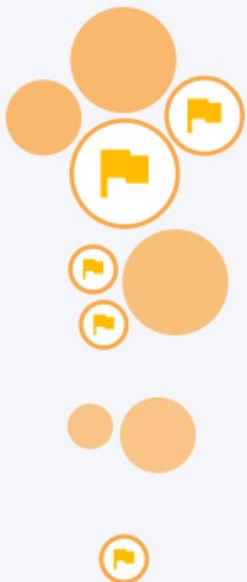
A student's course grade strongly impacts their graduation likelihood

You have no active filters [Add Filters](#)

42 Courses

More

Year 1



Less

YEAR TYPICALLY TAKEN

SPC-2608

Oral Communications/Research/Presentation Skills

Earning a C in SPC-2608 is a Yellow Flag signal.

- Students with a C in SPC-2608 are 78.5% likely to persist, but only 47.5% likely to graduate
- Students with a C in SPC-2608 who do persist are 19.7% less likely to graduate than persisting students with higher grades. This drop is 2.2X larger in SPC-2608 than in the average 2nd year course.

29k
All-Time Enrollment

7.8pp
Grade Signal

Explore

where a single letter-grade difference creates the biggest change in likelihood for an individual student. Advising students to take courses could increase their graduation likelihood.

Bubble Size

Export Courses

Year 5

Highest Grade Signal

- PSY-1012 : General Psychology
- SLS-1122 : Managing Your Success
- MAT-1033 : Intermediate Algebra
- ENC-1101 : Introduction to Composit...
- AST-1002 : Astronomy
- GEB-2430 : Ethics and Social Respo...
- DEP-2004 : Developmental Psycholo...
- ENC-1102 : Writing with Research
- ECO-2023 : Principles of Microecono...
- HUN-1201 : Human Nutrition
- GEO-2000 : World Geography
- PSC-1121 : Physical Science
- SPC-2608 : Oral Communications/R...

Civitas

SPC-2608

Oral Communications/Research/Presentation Skills

This course covers the basic principles of speech communication, including practice with various types and methods of oral expression. This course also helps develop the general education outcomes of (1) critical/creative thinking; (2) communication; (3) cultural literacy; and (4) information and technical. [More](#)



TOP MAJORS

29.2% Associate of Arts Degree
9.5% Associate of Arts Degree/Undecided Major - Sub Plan
61.1% Other



COURSE MODALITY

82.5% OnGround
12.3% Blended
4.2% Online

You have no active filters [Add Filters](#)

Earning a C in SPC-2608 is a Yellow Flag signal.

Students with a C in SPC-2608 tend to persist, but they graduate at a rate far lower than students with better grades.

- Students with a C in SPC-2608 are 78.5% likely to persist, but only 47.5% likely to graduate
- Students with a C in SPC-2608 who do persist are 19.7% less likely to graduate than persisting students with higher grades. This drop is 2.2X larger in SPC-2608 than in the average 2nd year course.

View a list of [past SPC-2608 students who earned a C and are still enrolled at your institution](#)

TYPICALLY TAKEN
2nd Year

CURRENT ENROLLMENT
1,168 >

ALL-TIME ENROLLMENT
28,569

Key Insights

Graduation

Persistence

INSIGHT

THIS COURSE

AVG COURSE >

How strongly does a student's grade in this course signal graduation likelihood?

Individual students who improve their grade in this course by one letter have a 7.8 percentage point stronger likelihood of graduation. That's on par with the average course.

7.8pp

Stronger Likelihood of Graduation

7.2pp

Stronger Likelihood of Graduation

What course grades predict student success?

Students must earn a A or higher in this course to have an above average likelihood of graduation compared to other students in this course.
[View a list of past SPC-2608 students who earned a B or lower in this course.](#)

A

Tipping Point Grade

B

Tipping Point Grade

How many students are struggling in this course?

9.5% of students in this course withdraw or earn a D or F. That's 37.1% lower than the average course.

9.5%

D/F/W

15.1%

D/F/W

What is this course's potential to boost graduation rates?

If the average student's grade was one letter higher, you'd see a 4.2 percentage point lift in graduation. That's 366.7% higher than the average course.

4.2pp

Lift in Graduation

0.9pp

Lift in Graduation