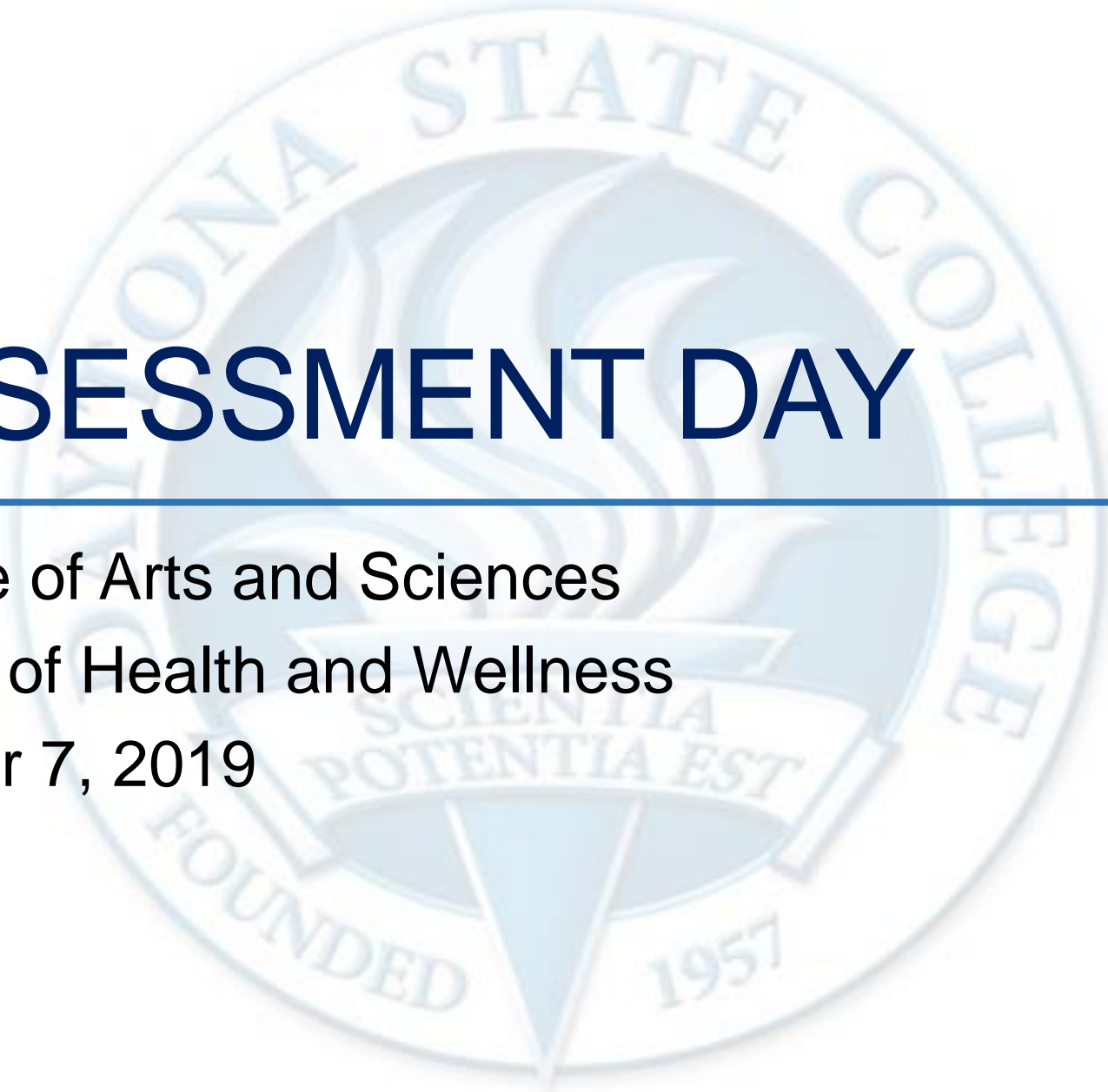


ASSESSMENT DAY

College of Arts and Sciences
School of Health and Wellness
October 7, 2019



Strengths

Challenges

Recommendations

Academic Assessment

	LEVEL	FOCUS	CONDUCTED BY	FREQUENCY
Academic Success Committee	Program	<ul style="list-style-type: none"> Quality of assessment practices 	Committee of peers	Years 1 & 2
Instructional Program Review	Program / Cluster	<ul style="list-style-type: none"> Enrollment, retention, completion Industry certifications and job placement Program budget and staffing Advisory committees Curriculum changes 	Committee of peers	Year 3
Assessment Day	Course/ Program	<ul style="list-style-type: none"> Enrollment by demographics Graduation and retention Average class size Course success rate Placement rate SLOs, PLOs and ILOs 	Program Chair and Faculty	Years 1, 2, 3

Last Assessment Day – Action Items

Last Assessment Day: 11-2-2018:

- Considering having a digital copy of the first chapter available to students in Falcon Online
- Confirm that dual enrolled students are also part of the new student orientation initiative (Michelle)
- Reach out to TRiO and MOCI
- Civitas outreach campaign to promote PET2084

Course Learning Outcome – HUN1201

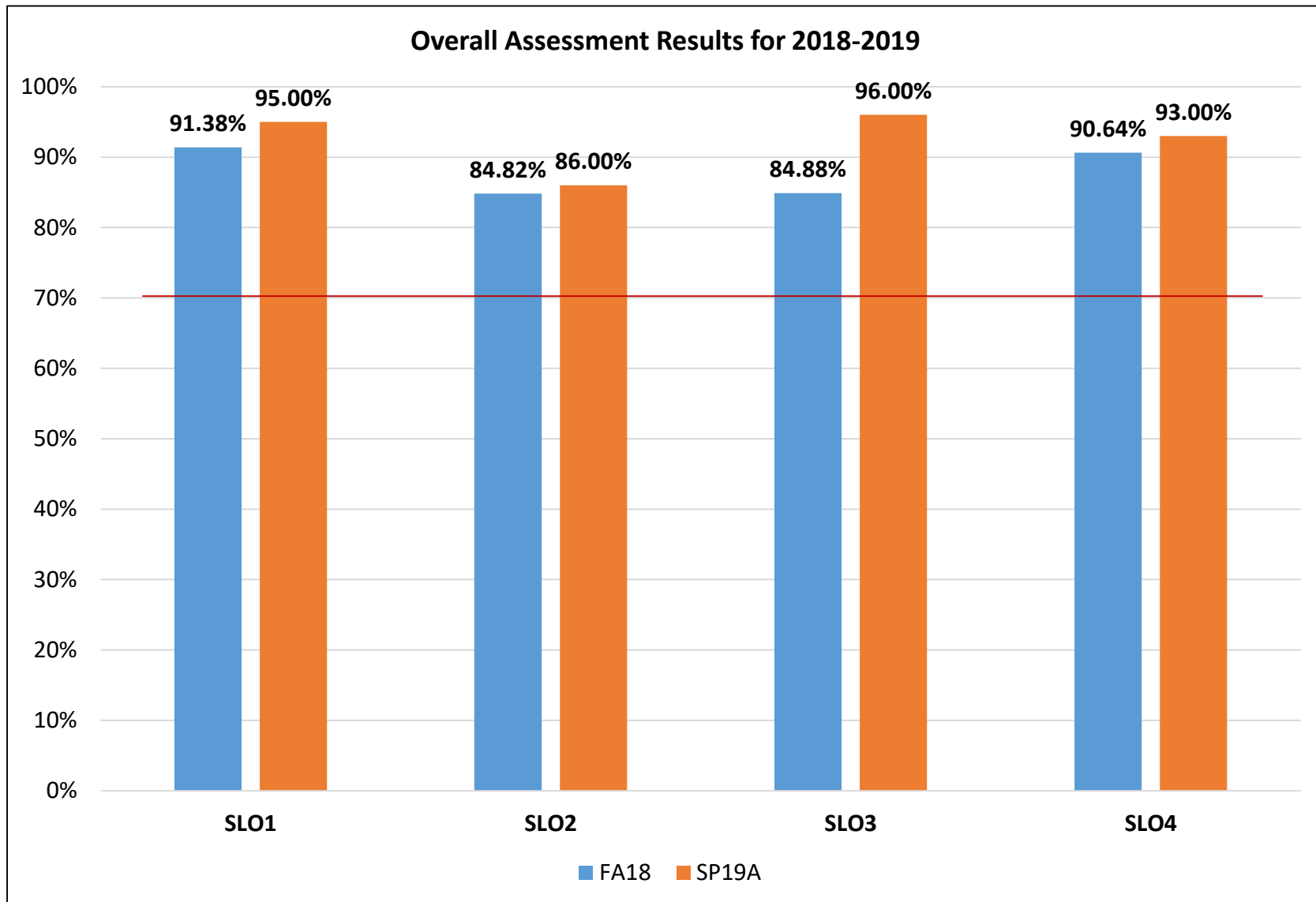
SLO1: Describe how food and nutrients affect the health of the human body throughout the lifecycle, and in relationship to fitness, weight control, and the prevention of diet related chronic disease. (1)

SLO 2: Integrate nutritional thinking into daily life by analyzing and evaluating how personal food and lifestyle choices impact overall health, wellbeing, and the world in which we live. (1)

SLO 3: Apply evidence based information to answer questions that explore assumptions, concepts, and recommendations within the field of nutrition. (1, 4)

SLO 4: Discuss cultural influences and perspectives on food, nutrition and health. (3)

Course Learning Outcome Assessment – HUN1201



Course Learning Outcome Assessment – HUN1201

FA FACE TO FACE	
FULL	
SLO1	91.64%
SLO2	86.33%
SLO3	85.79%
SLO4	91.25%

FA HYBRID			FA HYBRID			FA HYBRID			FA HYBRID	
A			B			FULL			ALL	
SLO1	94.37%		SLO1	92.23%		SLO1	91.65%		SLO1	92.75%
SLO2	85.02%		SLO2	87.64%		SLO2	86.33%		SLO2	86.33%
SLO3	86.46%		SLO3	87.72%		SLO3	79.91%		SLO3	84.69%
SLO4	93.16%		SLO4	92.08%		SLO4	85.70%		SLO4	90.31%

FA ONLINE			FA ONLINE			FA ONLINE			FA ONLINE	
A			B			FULL			ALL	
SLO1	90.77%		SLO1	88.51%		SLO1	89.96%		SLO1	89.75%
SLO2	82.99%		SLO2	80.37%		SLO2	82.08%		SLO2	81.81%
SLO3	84.63%		SLO3	83.79%		SLO3	84.07%		SLO3	84.16%
SLO4	91.42%		SLO4	88.79%		SLO4	90.89%		SLO4	90.37%

SPRING A HYBRID	
SLO 1	96%
SLO2	87%
SLO3	96%
SLO4	94%
SPRING A ONLINE	
SLO 1	95%
SLO2	85%
SLO3	95%
SLO4	91%

Course Learning Outcome – PET2084

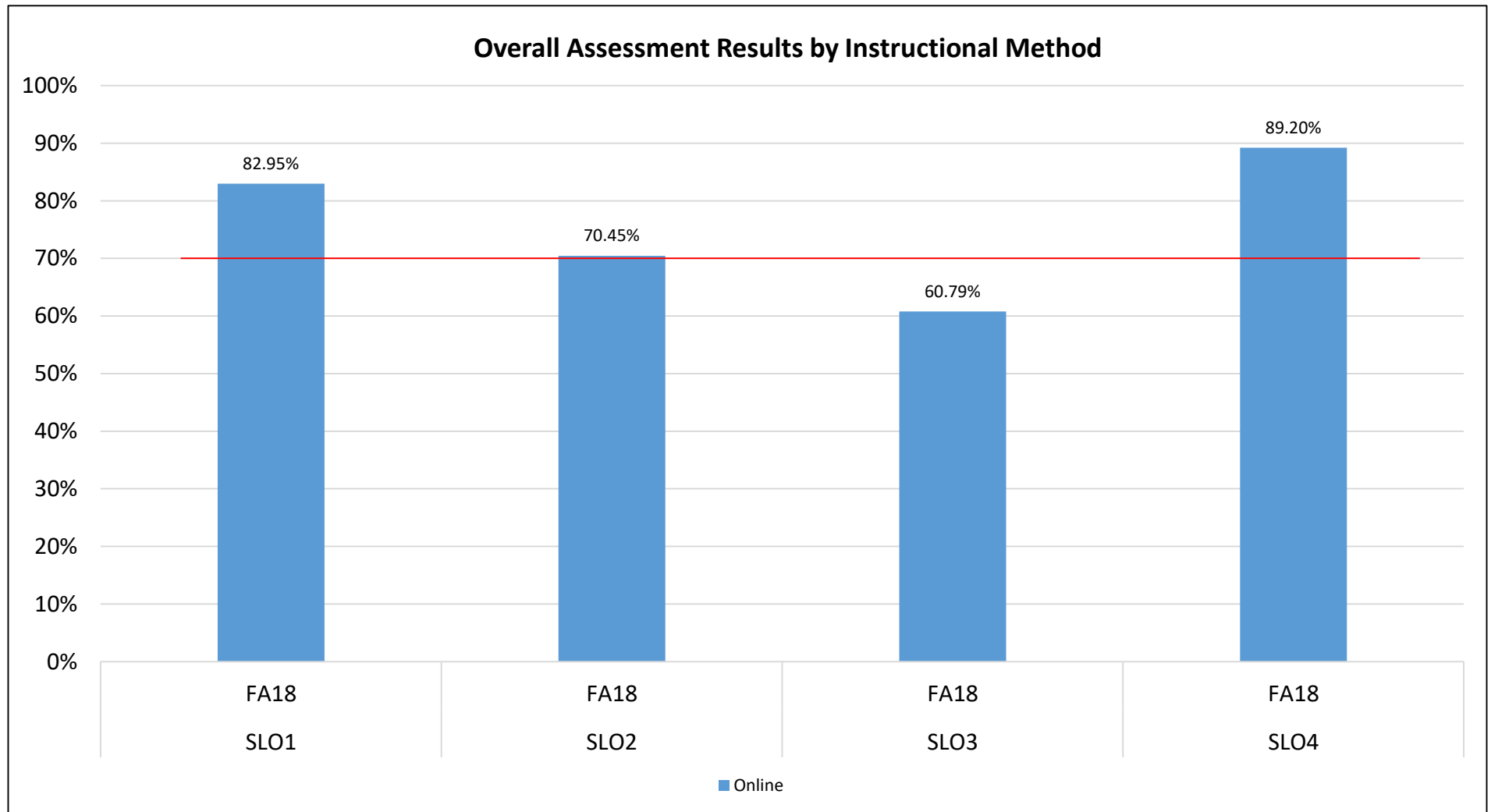
SLO1: Identify various diseases processed and evaluate those to determine how lifestyle factors impact the disease process, and identify positive/healthy lifestyle choices that would delay the gradual onset of chronic diseases. (1,2,3,4)

SLO 2: Integrate nutritional thinking into daily life by analyzing and evaluating how personal food and lifestyle choices impact overall health, well-being, and the world in which we live. (1,2,4)

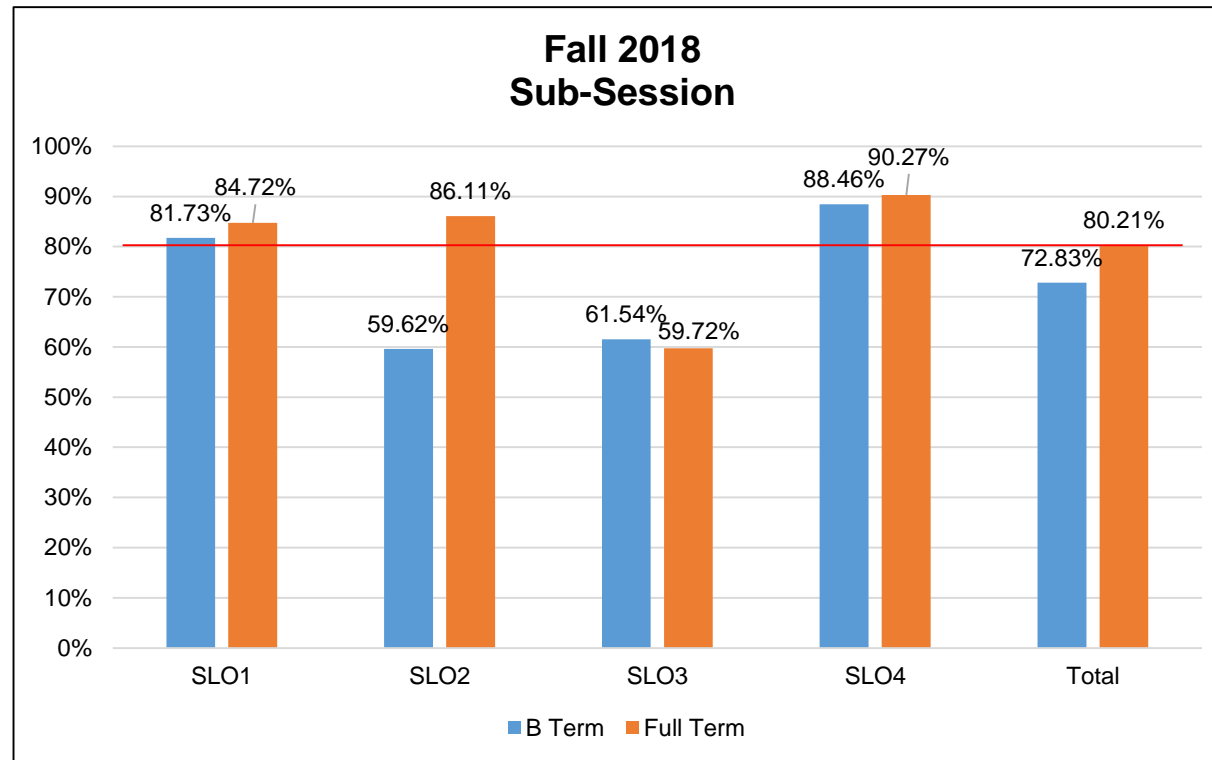
SLO 3: Identify personal exercise and fitness behaviors that are healthy and will assist in the developing a pattern of behavior which lends itself to a positive overall healthy lifestyle. (1,2,4)

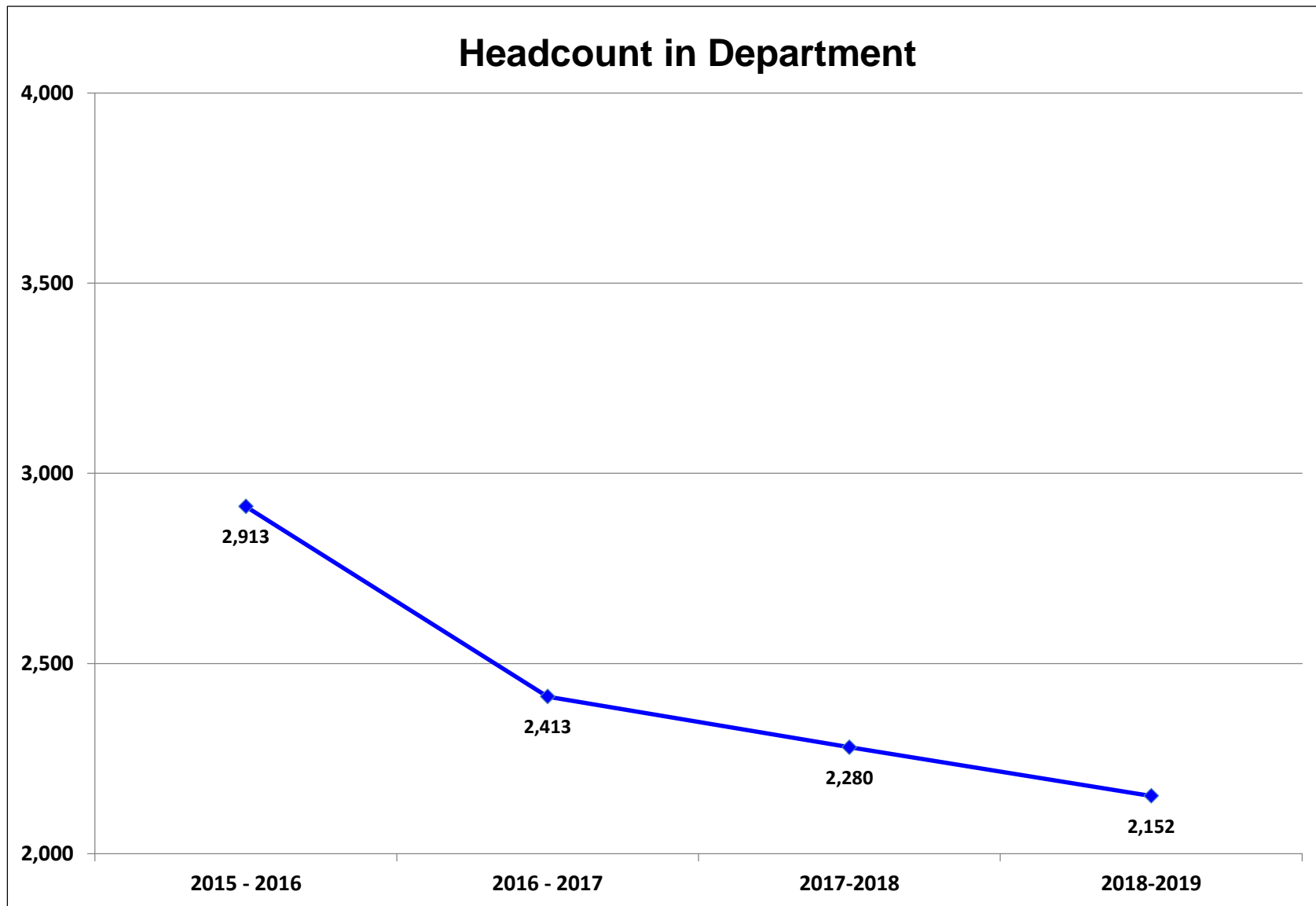
SLO 4: Apply evidence-based information to answer questions that explore assumptions, concepts, and recommendations regarding one's personal behaviors as they relate to one's overall personal health and wellness (Health Continuum) and behavior change process. (1,2,4)

Course Learning Outcome Assessment – PET2084



Course Learning Outcome Assessment – PET2084





Dual Enrollment count for 2018-2019: 356

Course Success Rate

Associated Courses	2015-2016		2016-2017		2017-2018		2018-2019	
	Attempted	% Successful	Attempted	% Successful	Attempted	% Successful	Attempted	% Successful
HLP1081	166	73%	104	85%	73	86%	10	80%
HUN1201	2078	82%	2034	84%	2064	82%	1995	84%
HUN1270	56	93%	27	93%			33	97%
PET2621					16	100%	9	78%
PET2084	818	77%	421	76%	276	82%	224	82%
Total	3118	80%	2586	83%	2429	82%	2271	84%

■ Indicates a success rate of 90% or higher
■ Indicates a success rate between 70% and 89%
■ Indicates a success rate below 70%

Course Success Rate by Campus – Multiple Campuses Only

Associated Courses and Campus	2015-2016		2016-2017		2017-2018		2018-2019		
	Attempted	% Successful	Attempted	% Successful	Attempted	% Successful	Attempted	% Successful	
HUN1201	Daytona	422	85%	485	90%	578	85%	792	86%
	Deland	186	85%	144	94%	132	80%	118	86%
	Deltona	160	89%	114	84%	113	80%	66	85%
	Flagler/Palm Cst	126	87%	169	83%	168	85%	241	85%
	New Smyrna Beach	70	77%	45	80%	37	97%	52	87%
	Online					1,036	79%	726	80%
PET2084	Daytona						70	81%	
	Online						154	82%	
Total	964*	86%	957*	88%	2,429	82%	2271	84%	

*Excludes fully online courses

- Indicates a success rate of 90% or higher
- Indicates a success rate between 70% and 89%
- Indicates a success rate below 70%

Source: IR Program Assessment Data

School Course Success Rate by Campus – Overall

Campus	2016-2017		2017-2018		2018-2019		
	Attempted	% Successful	Attempted	% Successful	Attempted	% Successful	
Daytona	654	87%	693	85%	914	86%	↑
DeLand	144	94%	132	92%	118	86%	
Deltona	114	84%	113	80%	66	85%	↑
Flagler/Palm Cst	169	83%	168	85%	241	85%	
New Smyrna Beach	45	80%	37	97%	52	87%	
Online			1,286	79%	880	81%	↑
Total	1126*	87%	2,429	82%	2271	84%	

*Excludes fully online courses

- Indicates a success rate of 90% or higher
- Indicates a success rate between 70% and 89%
- Indicates a success rate below 70%

Course Success Rate By Instructional Method – Multiple Methods Only


Associated Courses and Instructional Method	2015-2016		2016-2017		2017-2018		2018-2019		
	Attempted	% Successful	Attempted	% Successful	Attempted	% Successful	Attempted	% Successful	
HUN1201	Hybrid	438	82%	323	88%	460	84%	495	84%
	Lecture	526	88%	634	88%	539	87%	421	86%
	Online	1114	78%	1077	80%	1065	79%	1079	83%
PET2084	Lecture	120	64%	38	55%	26	77%		
	Online	698	80%	383	79%	250	82%	224	82%
DSC	Hybrid		82%		81%		83%		82%
	Lecture		80%		81%		83%		83%
	Online		78%		76%		78%		80%



■ Indicates a success rate of 90% or higher
■ Indicates a success rate between 70% and 89%
■ Indicates a success rate below 70%

School Course Success Rate By Instructional Method

Instructional Method	2015-2016		2016-2017		2017-2018		2018-2019	
	Attempted	% Successful	Attempted	% Successful	Attempted	% Successful	Attempted	% Successful
Hybrid	438	82%	323	88%	460	84%	495	84%
Lecture	868	82%	803	86%	653	87%	473	87%
Online	1812	79%	1460	80%	1315	79%	1303	83%
Total	3118	80%	2586	83%	2428	82%	2271	84%



■ Indicates a success rate of 90% or higher
■ Indicates a success rate between 70% and 89%
■ Indicates a success rate below 70%

Source: IR Program Assessment Data

Course Success Rates- Multiple Sessions or Sub-sessions Only

Associated Courses and Sub-session			2015-2016		2016-2017		2017-2018		2018-2019	
			Attempted	% Successful	Attempted	% Successful	Attempted	% Successful	Attempted	% Successful
HLP1081	FA	Full term	89	78%	45	80%	24	83%	10	80%
	SP	Full term	77	69%	59	88%	49	88%		
HUN1201		A term	152	75%	124	85%	218	85%	135	92%
	FA	B term	133	76%	110	73%	106	69%	158	84%
		Full term	629	82%	521	87%	504	84%	555	83%
		A term	137	82%	150	87%	105	83%	197	89%
	SP	B term	129	81%	143	76%	122	69%	200	74%
		Full term	581	84%	585	82%	566	84%	380	81%
	SU	Full term	317	84%	401	87%	443	83%	370	88%
HUN1270	FA	Full term							12	100%
	SP	Full term							21	95%
PET2084		A term	99	80%	69	75%	24	83%	18	100%
	FA	B term	101	74%	36	64%	23	70%	30	77%
		Full term	118	75%	56	71%	61	84%	20	75%
		A term	105	90%	44	77%	19	89%	27	96%
	SP	B term	103	77%	33	76%	36	81%	42	74%
		Full term	54	50%	65	77%	50	86%		
	SU	Full term	238	80%	118	83%	63	78%	87	80%

■ Indicates a success rate of 90% or higher
■ Indicates a success rate between 70% and 89%
■ Indicates a success rate below 70%

Source: IR Program Assessment Data

School Course Success Rate By Sub-session

Session and Sub-session		2015-2016		2016-2017		2017-2018		2018-2019	
		Attempted	% Successful	Attempted	% Successful	Attempted	% Successful	Attempted	% Successful
FA	A term	251	77%	193	82%	242	85%	153	93%
	B term	234	75%	146	71%	129	69%	188	82%
	Full term	892	81%	649	85%	604	84%	597	83%
	Session Total	1377	79%	988	82%	975	82%	938	84%
SP	A term	242	86%	194	85%	124	84%	224	90%
	B term	232	79%	176	76%	158	72%	242	74%
	Full term	712	79%	709	82%	665	85%	410	82%
	Session Total	1186	81%	1079	81%	947	82%	876	82%
SU	Full term	555	82%	519	86%	506	82%	457	86%
Total		3118	80%	2586	83%	2429	82%	2271	84%

■ Indicates a success rate of 90% or higher
■ Indicates a success rate between 70% and 89%
■ Indicates a success rate below 70%

Source: IR Program Assessment Data

Course Success Rate By IM and Session/Sub-session

Course, IM, Session/Sub-session	# Students Enrolled	Success Rate
HLP1081	10	80%
Lecture	10	80%
Fall 2018	10	80%
Full term	10	80%
HUN1201	1995	84%
Online	1079	83%
Summer 2018	316	89%
Fall 2018	380	81%
Full term	224	76%
A term	81	93%
B term	75	81%
Spring 2019	383	80%
Full term	193	78%
A term	80	85%
B term	110	78%
Lecture	421	86%
Fall 2018	276	87%
Full term	276	87%
Spring 2019	145	86%
Full term	145	86%
Hybrid	495	84%
Summer 2018	54	81%
Fall 2018	192	88%
Full term	55	89%
A term	54	91%
B term	83	86%
Spring 2019	249	81%
Full term	42	79%
A term	117	91%
B term	90	69%

Course, IM, Session/Sub-session	# Students Enrolled	Success Rate
HUN1270	33	97%
Lecture	33	97%
Fall 2018	12	100%
Full term	12	100%
Spring 2019	21	95%
Full term	21	95%
PET2084	224	82%
Online	224	82%
Summer 2018	87	80%
Fall 2018	68	82%
Full term	20	75%
A term	18	100%
B term	30	77%
Spring 2019	69	83%
A term	27	96%
B term	42	74%
PET2621	9	78%
Lecture	9	78%
Spring 2019	9	78%
Full term	9	78%

■ Indicates a success rate of 90% or higher
■ Indicates a success rate between 70% and 89%
■ Indicates a success rate below 70%

Source: IR Program Assessment Data

Course Success Rates for Guaranteed Sections

Course	2016-2017		2016-2017 Overall	2017-2018		2017-2018 Overall	2018-2019		2018-2019 Overall
	Attempted	% Successful		Attempted	% Successful		Attempted	% Successful	
HUN1201	110	83%	84%	85	84%	82%	164	82%	84%

■ Indicates a success rate of 90% or higher
■ Indicates a success rate between 70% and 89%
■ Indicates a success rate below 70%

Source: IR Program Assessment Data

Course Success Rates for Dual Enrolled Students

Course	2017-2018		2017-2018 Overall	2018-2019		2018-2019 Overall
	Attempted	% Successful		Attempted	% Successful	
HLP1081	1	100%	86%	1	100%	80%
HUN1201	215	93%	82%	353	92%	84%
HUN1270				2	100%	97%
PET2084	7	86%	82%			
PET2621				1	100%	78%
Total	223	92%		370	92%	

■ Indicates a success rate of 90% or higher
■ Indicates a success rate between 70% and 89%
■ Indicates a success rate below 70%

Source: IR Program Assessment Data

Course Success Rate By Race/Ethnicity

Course and Race/Ethnicity	2017-18 Success Rate	# Students Enrolled	Success Rate
HLP1081		10	80%
Black	73%	1	100%
Hispanic/Latino	80%	2	100%
White	91%	7	71%
HUN1201		1995	84%
American Indian/Alas	100%	3	100%
Asian	85%	48	96%
Black	69%	240	74%
Hispanic/Latino	83%	336	84%
Two or More Races	78%	82	80%
Unknown	79%	49	76%
White	85%	1237	86%
HUN1270		33	97%
Asian		1	100%
Black		4	100%
Hispanic/Latino		5	100%
Two or More Races		1	100%
White		22	95%
PET2084		224	82%
Asian	100%	4	25%
Black	70%	42	81%
Hispanic/Latino	84%	35	83%
Two or More Races	67%	8	88%
Unknown	80%	4	75%
White	84%	131	83%
PET2621		9	78%
Black	100%	2	100%
Hispanic/Latino	100%	1	0%
Unknown	100%	1	100%
White	100%	5	80%
Grand Total		2271	84%

Indicates a success rate of 90% or higher
 Indicates a success rate between 70% and 89%
 Indicates a success rate below 70%

Overall Course Success Rate By Race/Ethnicity

Course and Race/Ethnicity	# Students Enrolled	Success Rate
American Indian/Alas	3	100%
Asian	53	91%
Black	289	75%
Hispanic/Latino	379	84%
Two or More Races	91	81%
Unknown	54	76%
White	1402	86%
Grand Total	2271	84%

■ Indicates a success rate of 90% or higher
■ Indicates a success rate between 70% and 89%
■ Indicates a success rate below 70%

Civitas



A student's course grade strongly signals graduation likelihood

These are courses where a single letter grade difference creates the biggest boost in graduation likelihood for an individual student. Advising students to prioritize these courses could increase their graduation likelihood.

You have no active filters [Add Filters](#)

42 Courses

Bubble Size

Export Courses

Highest Grade Signal

- **PSY-1012** : General Psychology >
- **SLS-1122** : Managing Your Su... >
- **MAT-1033** : Intermediate Alge... >
- **ENC-1101** : Introduction to Co... >
- **AST-1002** : Astronomy >
- **GEB-2430** : Ethics and Social ... >
- **DEP-2004** : Developmental Ps... >
- **ENC-1102** : Writing with Resea... >
- **ECO-2023** : Principles of Micr... >
- **HUN-1201** : Human Nutrition >
- **GEO-2000** : World Geography >

More

Year 1

HUN-1201 Human Nutrition



Earning a C in HUN-1201 is a Yellow Flag signal.

- Students with a C in HUN-1201 are 74.3% likely to persist, but only 42.7% likely to graduate
- Students with a C in HUN-1201 who do persist are 27.6% less likely to graduate than persisting students with higher grades. This drop is 1.7X larger in HUN-1201 than in the average 1st year course.

20k

All-Time Enrollment

9.8pp

Grade Signal

Explore

Year 4

Year 5

GRADE SIGNAL

Less

Civitas

HUN-1201

Human Nutrition

This introductory course focuses on the principles of nutrition science and how they relate to human physiology and health. Practical applications for using nutrition as part of a personal approach to wellness are emphasized. This course will help satisfy the graduation requirements of the Associate of Arts Degree. [More](#)



You have no active filters. [Add Filters](#)



Earning a C in HUN-1201 is a Yellow Flag signal.

Students with a C in HUN-1201 tend to persist, but they graduate at a rate far lower than students with better grades.

- Students with a C in HUN-1201 are 74.3% likely to persist, but only 42.7% likely to graduate
- Students with a C in HUN-1201 who do persist are 27.6% less likely to graduate than persisting students with higher grades. This drop is 1.7X larger in HUN-1201 than in the average 1st year course.

[View a list of past HUN-1201 students who earned a C and are still enrolled at your institution](#)

TYPICALLY TAKEN
1st Year

CURRENT ENROLLMENT
694 >

ALL-TIME ENROLLMENT
20,117

Key Insights

Graduation

Persistence

INSIGHT

THIS COURSE

[AVG COURSE >](#)

How strongly does a student's grade in this course signal graduation likelihood?

Individual students who improve their grade in this course by one letter have a 9.8 percentage point stronger likelihood of graduation. That's 18.1% higher than the average course.

9.8pp
Stronger Likelihood of Graduation

8.3pp
Stronger Likelihood of Graduation

What course grades predict student success?

Students must earn a A or higher in this course to have an above average likelihood of graduation compared to other students in this course.
[View a list of past HUN-1201 students who earned a B or lower in this course.](#)

A
Tipping Point Grade

B
Tipping Point Grade

How many students are struggling in this course?

13.4% of students in this course withdraw or earn a D or F. That's 61.8% lower than the average course.

13.4%
D/F/W

35.1%
D/F/W

What is this course's potential to boost graduation rates?

If the average student's grade was one letter higher, you'd see a 3.3 percentage point lift in graduation. That's 43.5% higher than the average course.

3.3pp
Lift in Graduation

2.3pp
Lift in Graduation

Civitas

HUN-1201

Human Nutrition

This introductory course focuses on the principles of nutrition science and how they relate to human physiology and health. Practical applications for using nutrition as part of a personal approach to wellness are emphasized. This course will help satisfy the graduation requirements of the Associate of Arts degree. [More](#)



TOP MAJORS

- 22.0% Associate of Arts Degree
- 11.0% Associate of Arts Degree/Undecided Major - Sub Plan
- 50.2% Other



COURSE MODALITY

- 51.0% Online
- 38.7% OnGround
- 10.3% Blended

You have no active filters [Add Filters](#)

Earning a C in HUN-1201 is a Yellow Flag signal.

Students with a C in HUN-1201 tend to persist, but they graduate at a rate far lower than students with better grades.

- Students with a C in HUN-1201 are 74.3% likely to persist, but only 42.7% likely to graduate
- Students with a C in HUN-1201 who do persist are 27.6% less likely to graduate than persisting students with higher grades. This drop is 1.7X larger in HUN-1201 than in the average 1st year course.

View a list of [past HUN-1201 students who earned a C and are still enrolled at your institution](#)

TYPICALLY TAKEN

1st Year

CURRENT ENROLLMENT

694 >

ALL-TIME ENROLLMENT

20,117

Key Insights

Graduation

Persistence

INSIGHT

THIS COURSE

AVG COURSE >

How strongly does a student's grade in this course signal persistence likelihood?

Individual students who improve their grade in this course by one letter have a 4.2 percentage point stronger likelihood of persistence. That's on par with the average course.

4.2pp

Stronger Likelihood of Persistence

4.2pp

Stronger Likelihood of Persistence

What course grades predict student success?

Students must earn a B or higher in this course to have an above average likelihood of persistence compared to other students in this course.
View a list of [currently enrolled students who earned a C or lower](#) in this course.

B

Tipping Point Grade

C

Tipping Point Grade

How many students are struggling in this course?

12.3% of students in this course withdraw or earn a D or F. That's 59.8% lower than the average course.

12.3%

D/F/W

30.6%

D/F/W

How much does student performance in this course influence overall institution persistence rates?

If the selected students in this course improved their grade by one letter, you'd see a 0.0 percentage point lift in persistence. That's on par with the average course.

0.0pp

Lift in Persistence

0.0pp

Lift in Persistence

Program Guide