



CORE PERFORMANCE INDICATORS & ACCOUNTABILITY MEASURES

2019/2020 Reporting Year

Compiled and Presented by the Office of Institutional Research



**DAYTONA
STATE COLLEGE**

Table of Contents

At-A-Glance – 2019/2020	2
Introduction.....	3
Annual Headcount by Campus.....	5
Annual FTE (Funded)	6
Dual Enrollment Headcount and FTE	7
Dual Enrollment Transition to DSC	8
Annual Headcount and FTE by Instructional Method	9
Success Rates by Instructional Method	10
Graduates by Degree Awarded	11
AA Graduate Transfer Rates.....	12
Percent of Graduates Found Employed.....	13
Average Annual Wages Earned by Degree Type.....	14
Licensure / Certification Exam Pass Rates	15
Prior Year Public High School Graduate Capture Rate.....	16
Success Rate	17
Retention Rate.....	18
Graduation Rates	19
Abbreviations/Acronyms.....	20

At-A-Glance – 2019/2020

History

1957: Daytona Beach Junior College
1971: Became Daytona Beach Community College
2008: Became Daytona State College

Service Area

Flagler and Volusia Counties

Campus Locations

Advanced Technology College Campus
Daytona Beach Campus
DeLand Campus
Deltona Campus
Flagler/Palm Coast Campus
News-Journal Center
New Smyrna Beach-Edgewater Campus

Personnel (Fall 2019)

Administrators: 59
Faculty: 255, Adjuncts: 625
Staff: 601

Annual Enrollment / FTE

24,071 / 11,043.5

College Credit Student Characteristics

Male: 39%
Female: 60%
Not Indicated: 1%

African American: 12%
American Indian/Alaska Native: less than 1%
Asian: 2%
Hispanic/Latino: 17%
Native Hawaiian/Pacific Islander: less than 1%
White: 60%
Two or More Races: 3%
Not Indicated: 2%

Average Age: 26

Full-Time (Fall 2019): 38%
Part-Time (Fall 2019): 62%

Degrees and Certificates Awarded

Baccalaureate: 546
Associate of Arts: 1,874
Associate of Science/Associate of Applied
Science: 572
Certificates: 1,182

Adult High School: 8

GED: 273

Accreditation

Daytona State College is accredited by the Southern Association of Colleges and Schools Commission on Colleges to award associate and bachelor's degrees. Contact the Commission on Colleges at 1866 Southern Lane, Decatur, Georgia 30033-4097 or call 404-679-4500 for questions about the accreditation of Daytona State College.

Board of Trustees

Bob Davis
Sarah Dougherty
Randy Dye
Lloyd Freckleton
Mary Ann Haas
Betty Holness, Vice Chair
Randy Howard, Chair
Robert Lloyd
Garry Lubi

College President and Executive Staff

Thomas LoBasso, President
Brian Babb, Executive VP and General Counsel
Eric D'Aquino, VP, Enrollment Services
Keith Kennedy, VP, Student Development
Amy Locklear, Provost, Academic Affairs and Institutional Effectiveness
Roberto Lombardo, Senior VP, Information Technology/Center for Interactive Media
Isalene Montgomery, Senior VP and Chief Business Officer, Finance & Business Services
Timothy Norton, VP, Advancement and Executive Director, Foundation
Lonnie Thompson, Director, Equity and Inclusion
Christopher Wainwright, Associate VP, Facilities

Introduction

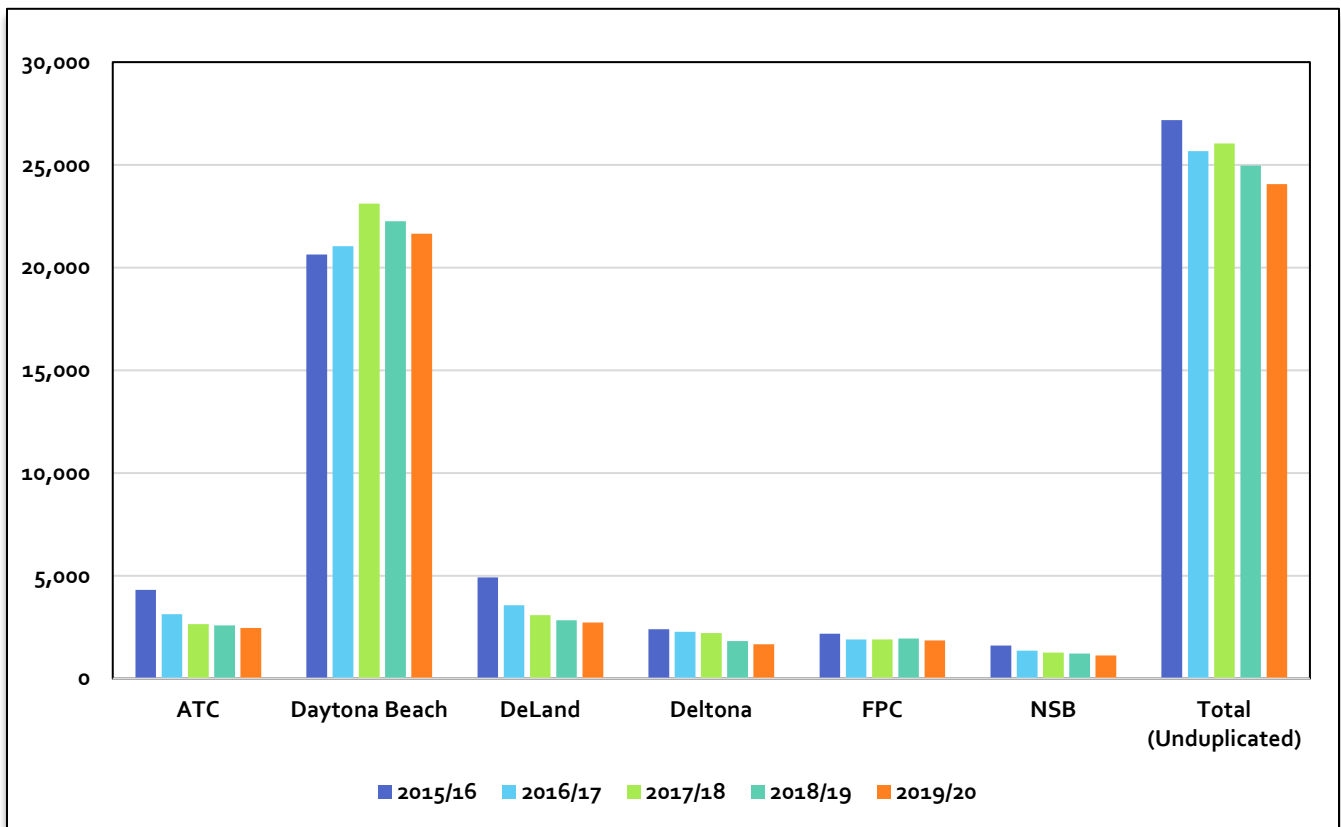
Daytona State College uses a variety of measures to evaluate its performance. The College tracks performance trends to evaluate its effectiveness over time and serve as the basis for planning and assessment. The performance indicators are selected for this report based on the College's strategic priorities and institutional outcomes, other institutional measures, and accountability measures monitored by the Florida Department of Education. The following is a brief summary of the measures outlined in this report.

- Total **unduplicated headcount** decreased from the previous year by 3.6% (from 24,963 to 24,071).
- **FTE** decreased from 11,117.7 to 11,043.5 from the previous year (-0.7%). At the same time, some areas experienced increases: Upper Division 0.6% (from 945.9 to 951.4), Advanced and Professional 1.5% (from 6,190.5 to 6,280.7), Apprenticeships 2.8% (from 568.4 to 584.4), College Preparation 7.5% (from 131.9 to 141.8), and Postsecondary Vocational 1.7% (from 2,057.7 to 2,091.7).
- Both **dual enrollment headcount and FTE** increased from the previous year: headcount 2.6% (from 2,994 to 3,073) and FTE 5.9% (1,383 to 1,465).
- The **number of students who graduated from DSC while dual enrolled** increased from the previous year by 24.6% (from 199 to 248).
- Both **face-to-face and distance education (hybrid and online) headcounts** increased from the previous year. The largest increase was in distance education (3.6%, from 15,127 to 15,676), while the smallest increase was in face-to-face (0.7%, from 12,228 to 12,318).
- **Distance education (hybrid and online) FTE** increased from the previous year by 7.9% (from 5,665.6 to 6,113.7).
- While face-to-face classes experienced a decrease in **success rates** (students passing with a C or better), distance education classes (hybrid and online) increased by nearly 1% (from 80.9% to 81.7%) from the previous year.
- **College degrees and certificates awarded** increased by 1.4% (from 3,855 to 3,910) from the previous year. At the same time, Adult Education graduates decreased by 31.8% (from 412 to 281).
- 1,237 (68.0%) of DSC's 2017/18 **AA graduates were found continuing their education** in Florida in 2018/19. Of those, 639 (35.1%) continued their education in the State University System, 268 (14.7%) enrolled in DSC's baccalaureate degree programs, 246 (13.5%) continued their education in the Florida College System, and 84 (4.6%) continued at a private college or university.

- The percent of **graduates found employed** decreased in most areas from the previous year. However, the Baccalaureate degree area increased (from 77% to 83%).
- The Bachelor graduates in 2017/18 had the highest **annual average wage** of all DSC graduates. The largest increase in annual average wage from the previous year was found in the Applied Technology Diploma areas (13.9%, from \$29,468 to \$33,556).
- **Licensure/certification exam pass rates** in 2018/19 ranged from 65.7% to 100% across all programs.
- The **high school graduate capture rate** from Volusia and Flagler decreased from 31.7% in 2016/17 to 29.2% in 2017/18 but continues to remain above the state capture rate of 23.5%.
- Over a four-year time period from 2015/16 to 2018/19, DSC's **success rate** increased in all areas compared to the previous tracking period. Both Associate in Science/Associate in Applied Science and Baccalaureate degrees are above the state rate.
- Over a four-year time period from 2015/16 to 2018/19, DSC's **retention rate** increased in all areas except for Postsecondary Vocational Certificates/Applied Technology Diplomas compared to the previous tracking period. Both Associate in Science/Associate in Applied Science and Baccalaureate degrees are above the state rate.
- Over a four-year time period from 2015/16 to 2018/19, DSC's **graduation rate** increased in all areas except for Postsecondary Vocational Certificates/Applied Technology Diplomas compared to the previous tracking period. All areas except for Postsecondary Vocational Certificates/Applied Technology Diploma degrees are above the state rate.

Annual Headcount by Campus

Year	Advanced Technology Center	Daytona Beach	DeLand	Deltona	Flagler/ Palm Coast	New Smyrna Beach/ Edgewater	Total ²
2015/2016	4,326	20,635	4,920	2,409	2,181	1,616	27,179
2016/2017	3,140	21,040	3,574	2,279	1,899	1,365	25,668
2017/2018	2,649	23,118	3,094	2,216	1,902	1,262	26,045
2018/2019	2,593	22,252	2,837	1,835	1,954	1,227	24,963
2019/2020	2,472	21,645	2,737	1,670	1,861	1,128	24,071

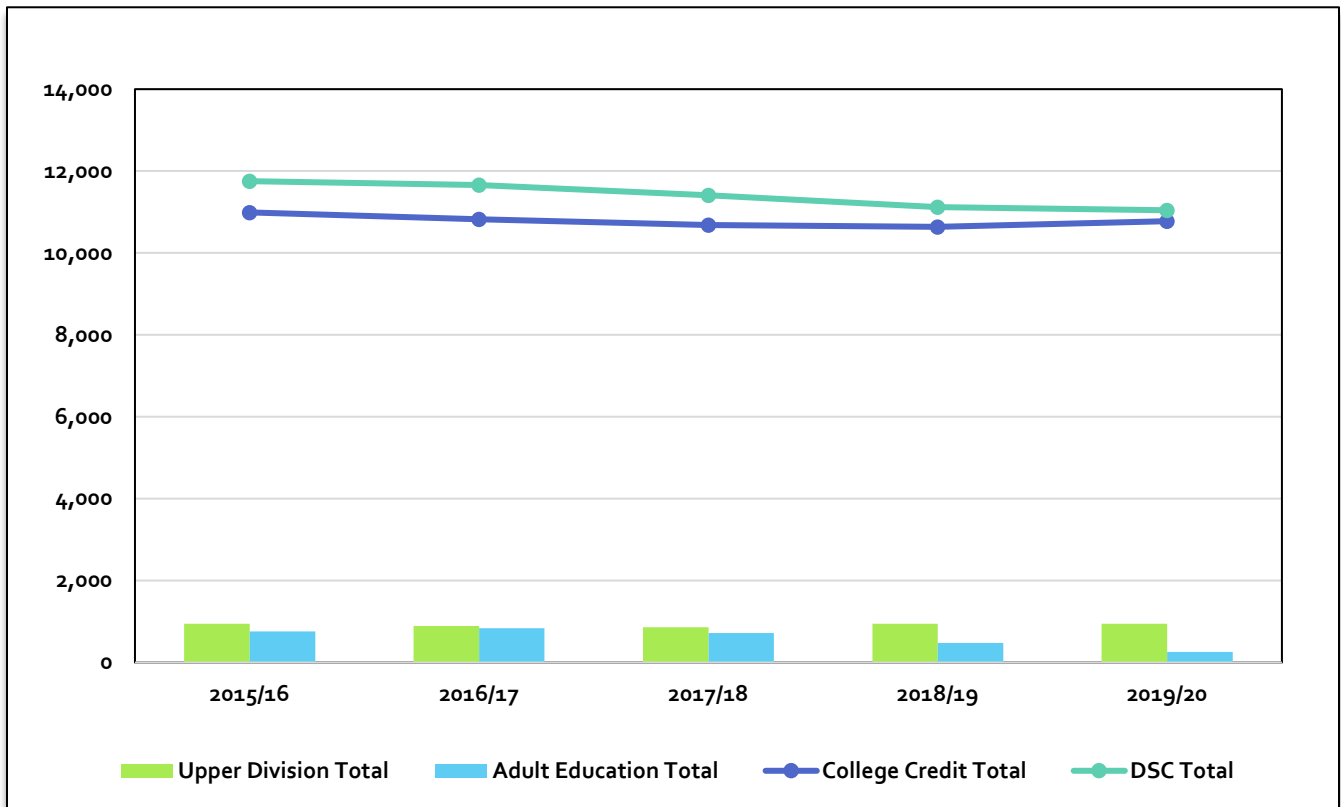


Source: SDBRT6

² Headcounts are duplicated across campuses, unduplicated in total.

Annual FTE (Funded)

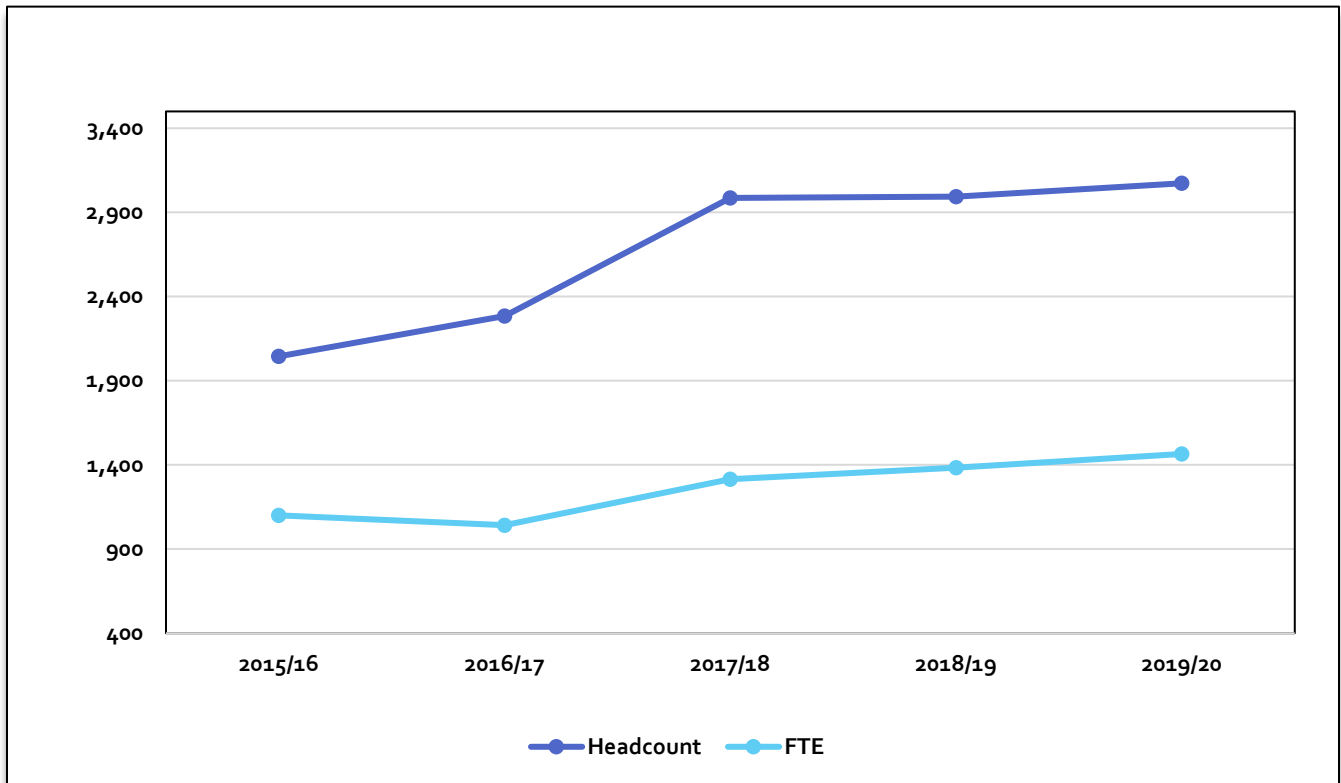
Year	UD	AP	APPR	CPRP	EPI	PSAV	PSV	AE	Total
2015/2016	945.3	6,512.3	412.5	320.9	1.6	670.0	2,128.2	762.8	11,753.6
2016/2017	894.2	6,260.9	454.1	213.0	1.3	688.4	2,311.5	834.6	11,658.0
2017/2018	864.9	6,358.8	543.7	153.4	1.6	696.1	2,063.5	723.6	11,405.6
2018/2019	945.9	6,190.5	568.4	131.9	1.0	743.3	2,057.7	479.0	11,117.7
2019/2020	951.4	6,280.7	584.4	141.8	0.8	729.5	2,091.7	263.2	11,043.5



Source: SDB.FTCOLFF

Dual Enrollment Headcount and FTE

Year	AP		PSV		PSAV		Total	
	HC	FTE	HC	FTE	HC	FTE	HC ⁵	FTE
2015/2016	2,039	1,070	180	28	7	2	2,045	1,100
2016/2017	2,267	1,016	175	25	15	1	2,285	1,042
2017/2018	2,944	1,251	262	39	46	26	2,986	1,316
2018/2019	2,962	1,319	260	43	34	21	2,994	1,383
2019/2020	3,051	1,403	273	49	21	12	3,073	1,465

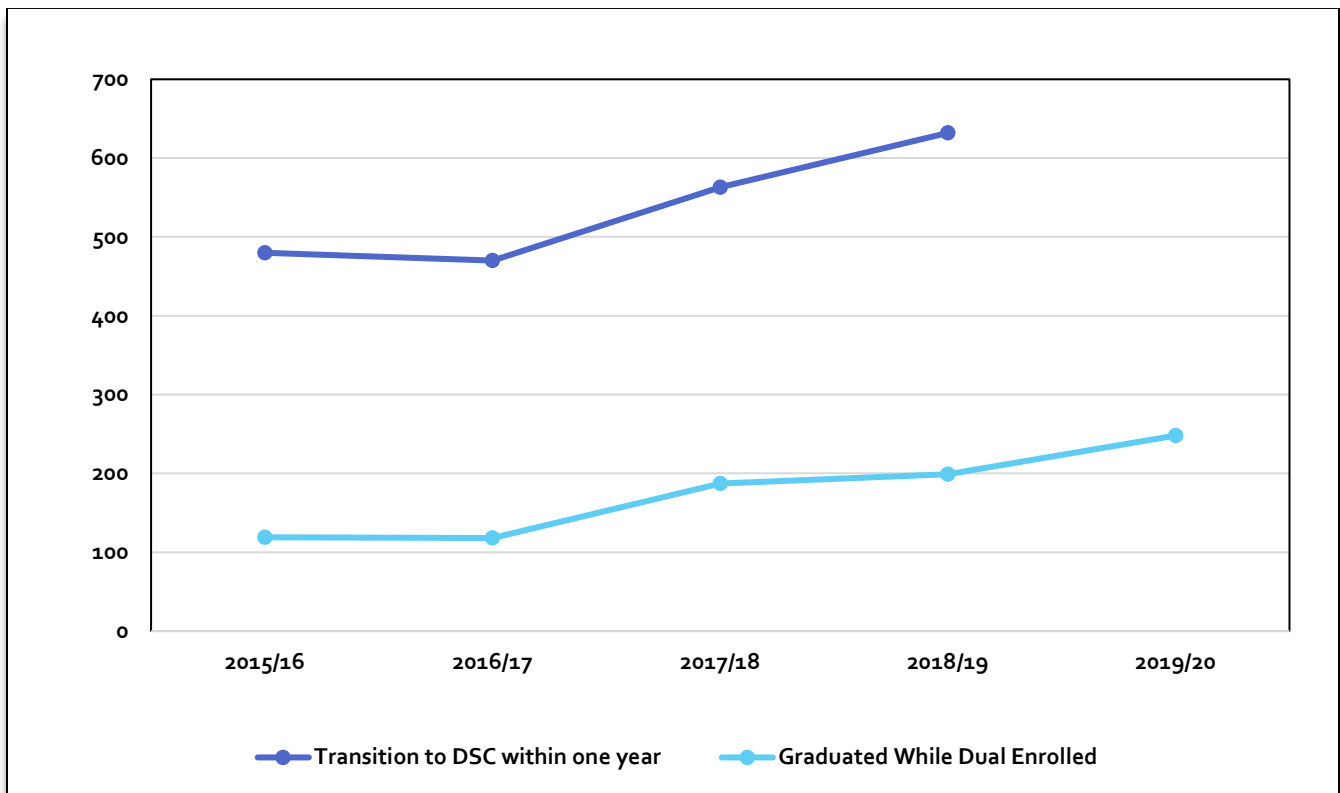


Source: IR (Crystal report, DUAL to CC)

⁵ Headcounts are duplicated across disciplines, unduplicated in total.

Dual Enrollment Transition to DSC

Year	Transition to DSC Within One Year of HS Graduation		Graduated from DSC While Dual Enrolled ⁷	
	#	%	#	%
2015/2016	480	23%	119	6%
2016/2017	470	21%	118	5%
2017/2018	563	19%	187	6%
2018/2019	632	21%	199	7%
2019/2020	N/A	N/A	248	8%

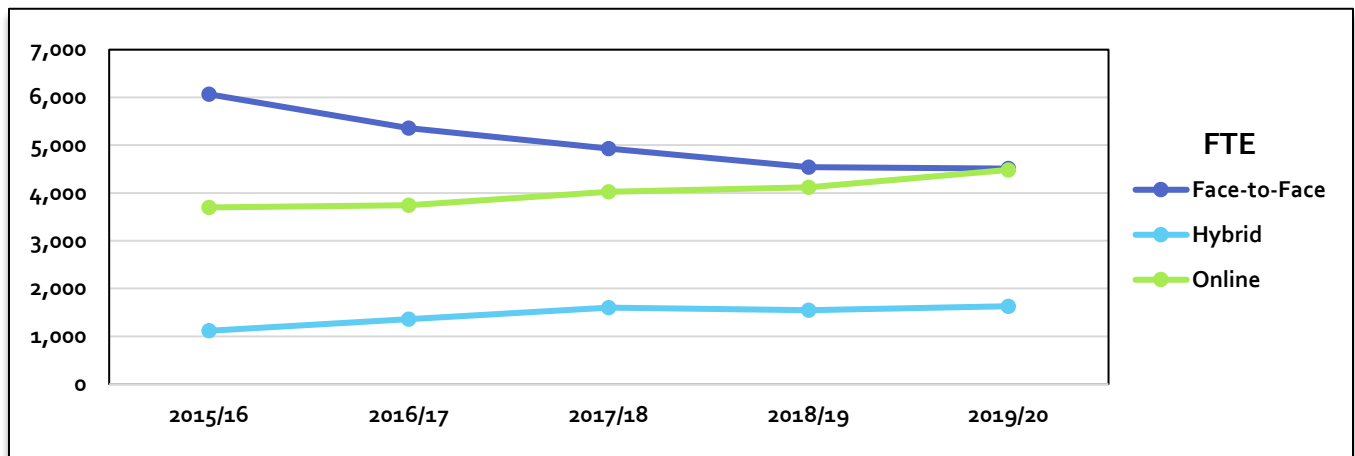
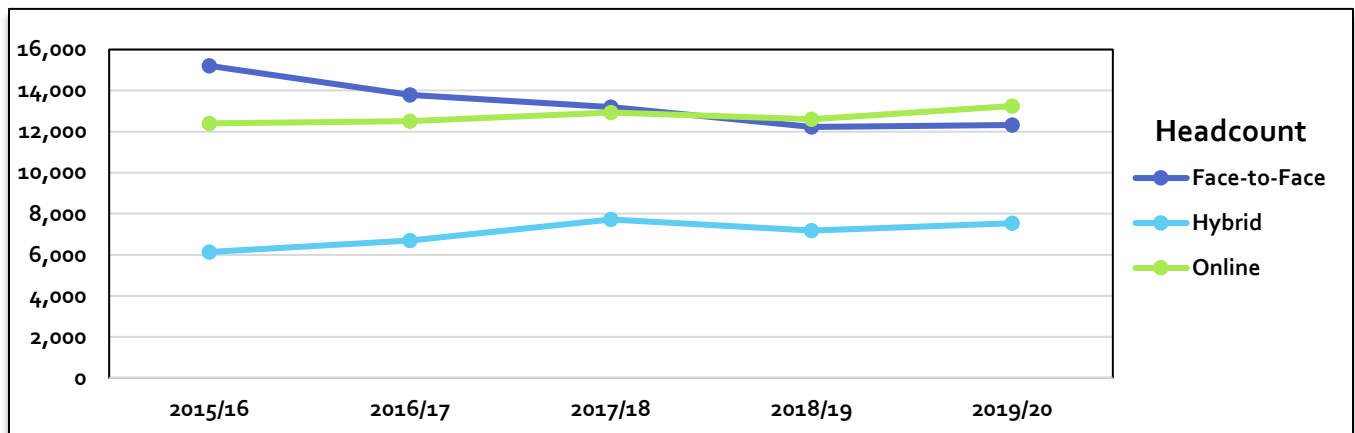


Source: IR (Crystal report, DUAL to CC)

⁷ Graduates include associate degrees and certificates.

Annual Headcount and FTE by Instructional Method

Year	Face-to-Face		Distance Education					
			Hybrid		Online		Total	
	HC	FTE	HC	FTE	HC	FTE	HC ⁹	FTE
2015/2016	15,204	6,065.9	6,136	1,116.2	12,403	3,698.3	14,740	4,814.5
2016/2017	13,796	5,357.6	6,701	1,360.1	12,507	3,743.9	15,340	5,104.0
2017/2018	13,190	4,930.5	7,719	1,600.9	12,926	4,026.3	15,607	5,627.2
2018/2019	12,228	4,543.4	7,177	1,545.0	12,600	4,120.6	15,127	5,665.6
2019/2020	12,318	4,510.8	7,537	1,630.1	13,248	4,483.6	15,676	6,113.7

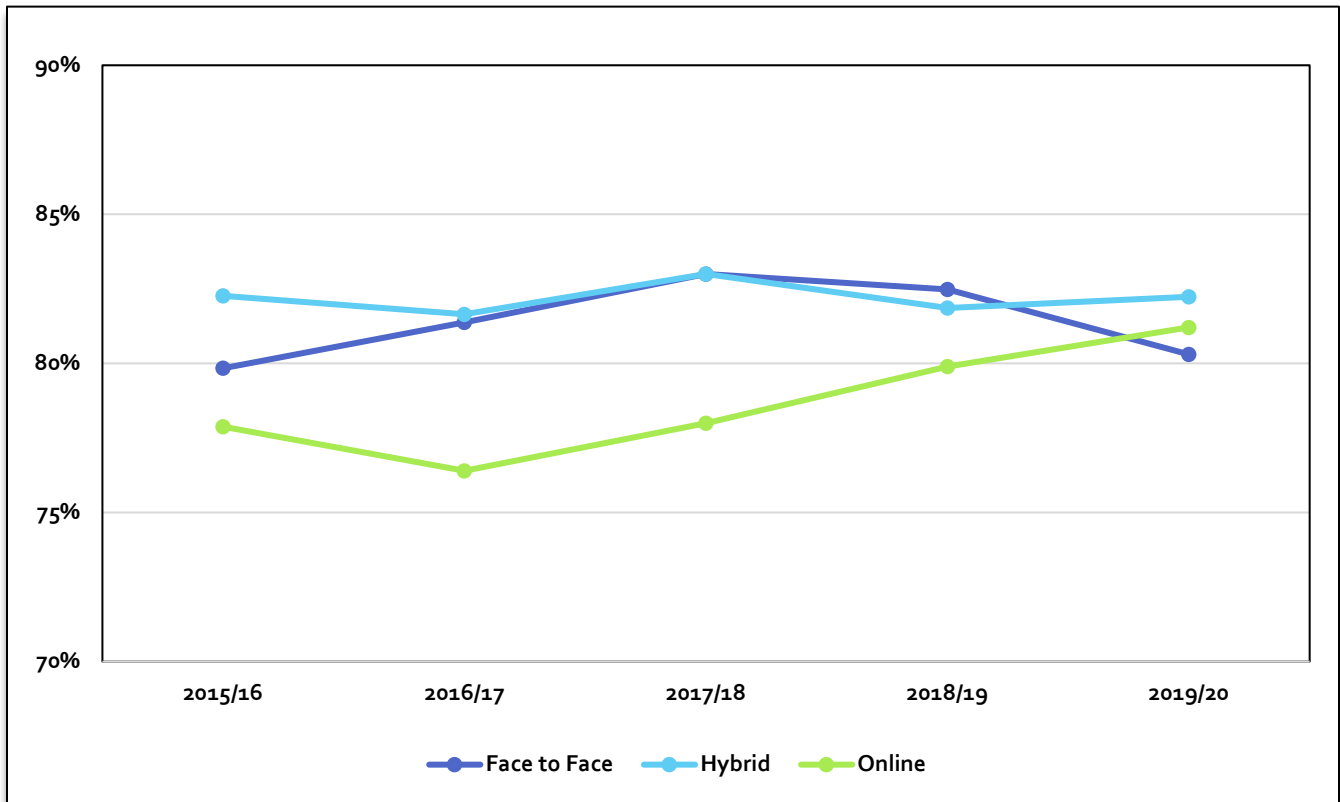


Source: IR (Query, DSC_IR_RCS_WEBRT_FTE_IM_YR)

⁹ Headcounts are duplicated across distance education instructional methods, unduplicated in total.

Success Rates by Instructional Method

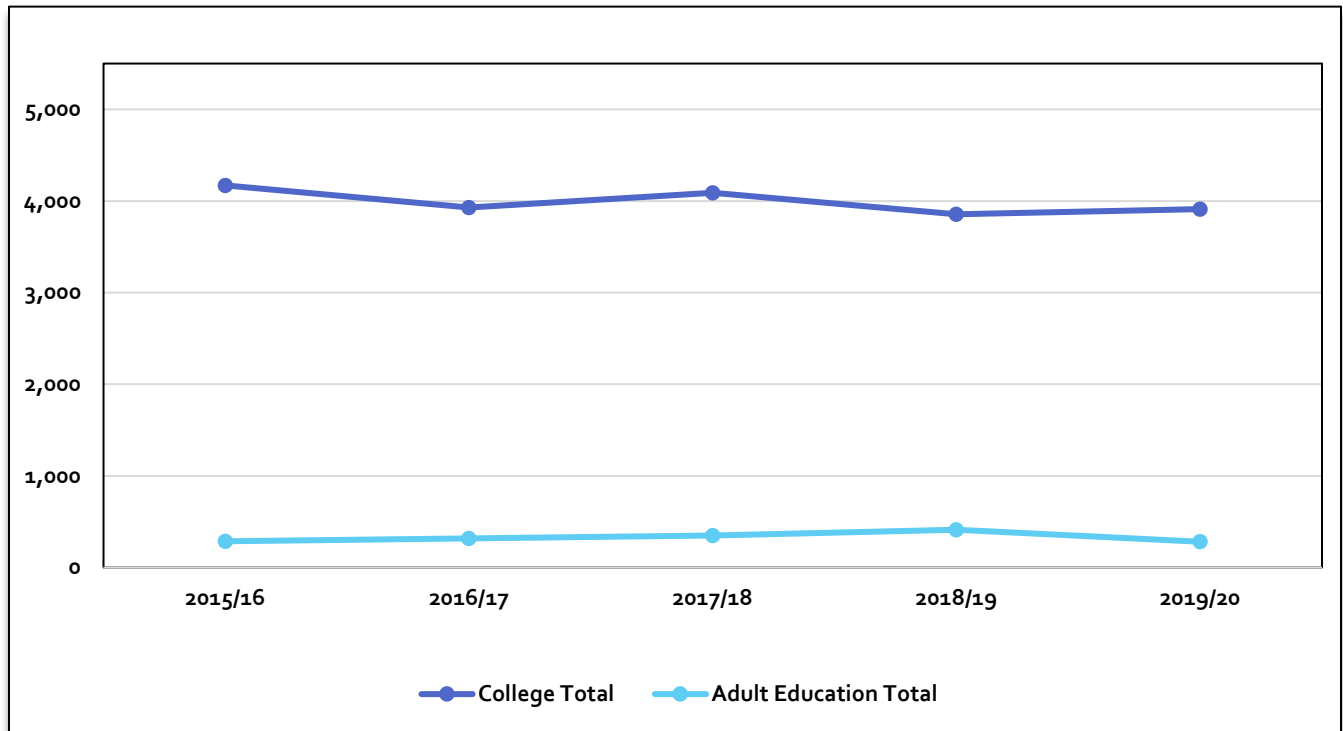
Year	Face-to-Face	Distance Education		
		Hybrid	Online	Total
2015/2016	79.8%	82.3%	77.9%	80.1%
2016/2017	81.4%	81.7%	76.4%	79.0%
2017/2018	83.0%	83.0%	78.0%	80.5%
2018/2019	82.5%	81.9%	79.9%	80.9%
2019/2020	80.3%	82.2%	81.2%	81.7%



CTE/UGD students passing with a C or better
 Source: IR (Query, DSC_IR_RCS_CPI_CRSMODESUCC)

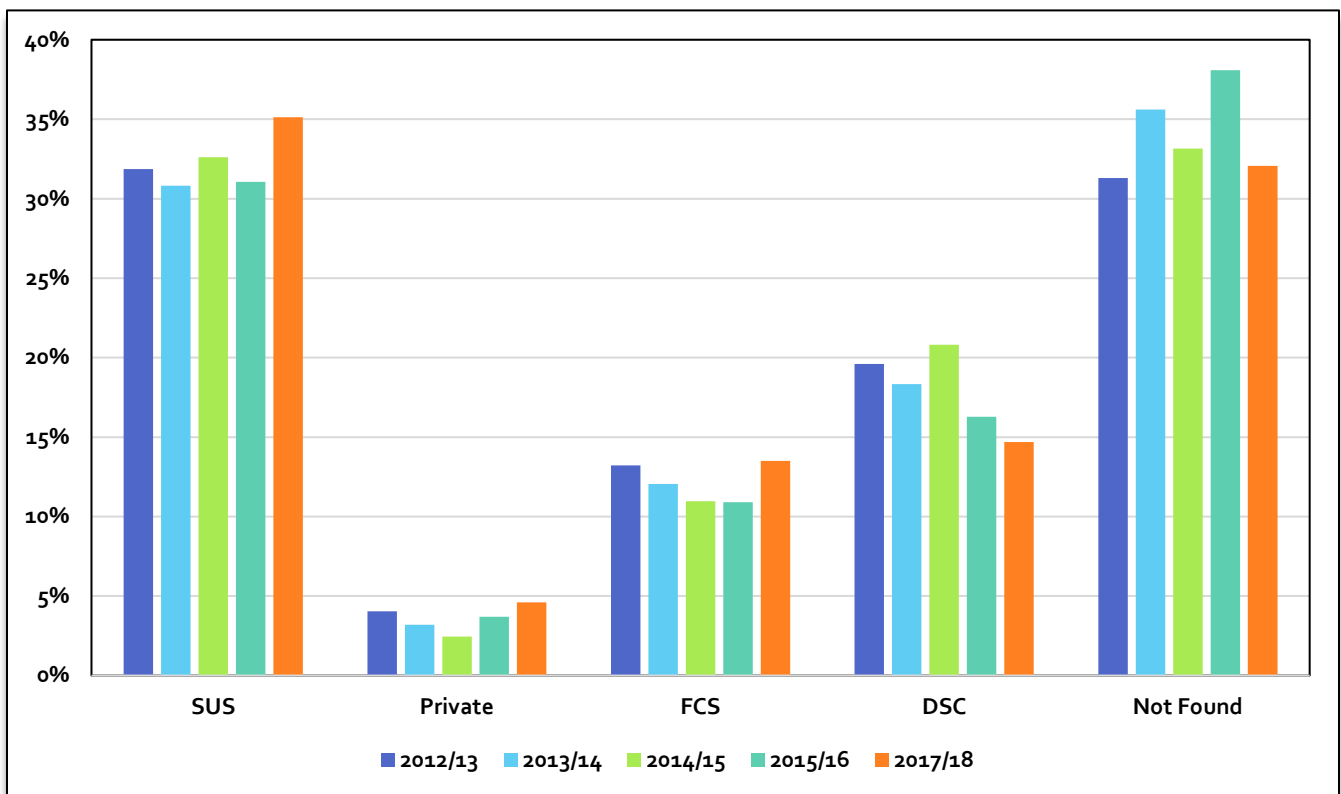
Graduates by Degree Awarded

Year	College					Adult Education	
	UD	AA	AS/AAS	Cert	EPI	AHS	GED
2015/2016	469	1,721	720	1,245	15	9	276
2016/2017	461	1,704	659	1,090	16	9	310
2017/2018	437	1,835	674	1,132	12	9	339
2018/2019	485	1,721	652	989	8	9	403
2019/2020	546	1,874	572	906	12	8	273



AA Graduate Transfer Rates

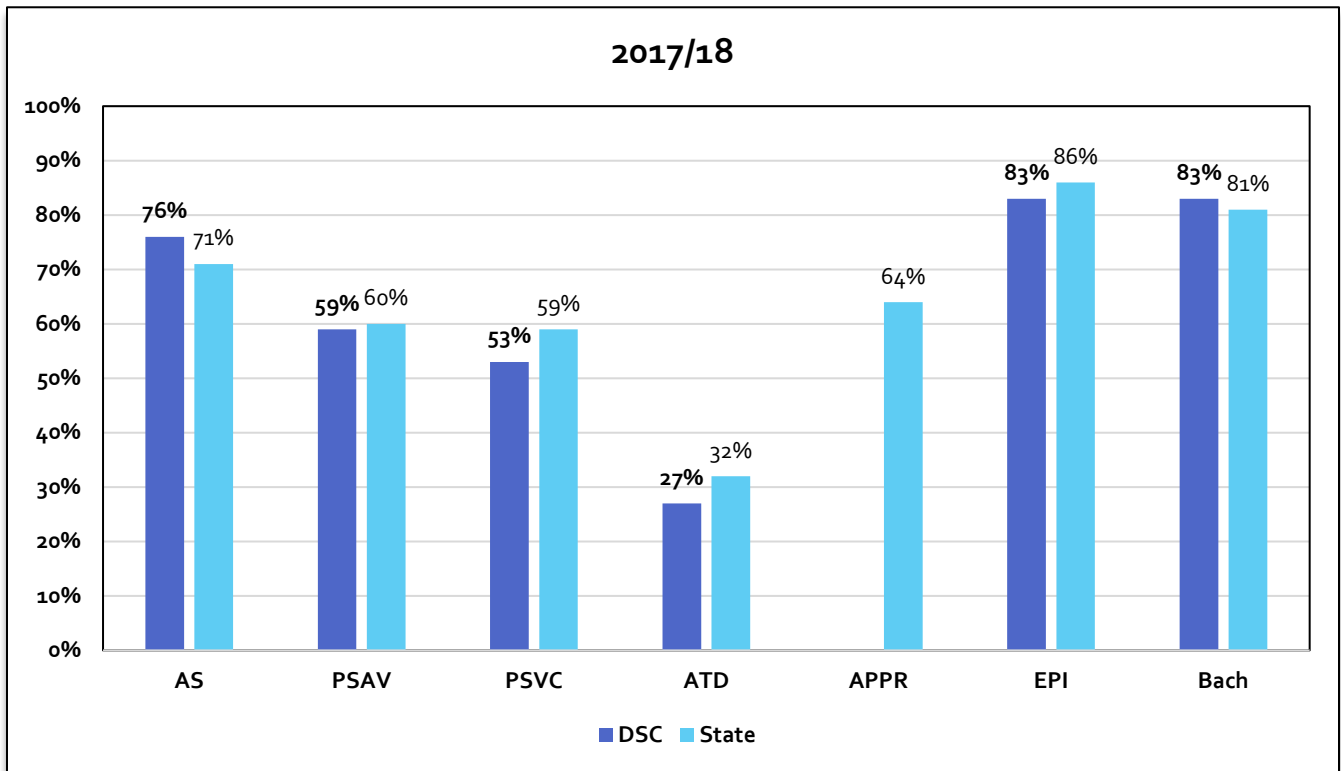
Graduate Year	Total AA Graduates	Type of Transfer Institution							
		State University System (SUS)		Private University		Florida College System (FCS)		DSC Bach	
		#	%	#	%	#	%	#	%
2013/2014	1,626	501	30.8%	52	3.2%	196	12.1%	298	18.3%
2014/2015	1,668	544	32.6%	41	2.5%	183	11.0%	347	20.8%
2015/2016	1,707	530	31.0%	63	3.7%	186	10.9%	278	16.3%
2016/2017	1,691	594	35.1%	58	3.4%	211	12.5%	255	15.1%
2017/2018	1,819	639	35.1%	84	4.6%	246	13.5%	268	14.7%



Source: Florida Education & Training Placement Information Program (FETPIP)

Percent of Graduates Found Employed

Graduate Year	AS	PSAV	PSVC	ATD	APPR	EPI	Bach
2013/2014	76%	56%	58%	31%	77%	100%	75%
2014/2015	75%	60%	64%	31%	N/A ¹⁵	N/A ¹⁵	75%
2015/2016	64%	64%	59%	22%	100%	93%	77%
2016/2017	79%	64%	59%	29%	85%	88%	77%
2017/2018	76%	59%	53%	27%	N/A ¹⁵	83%	83%

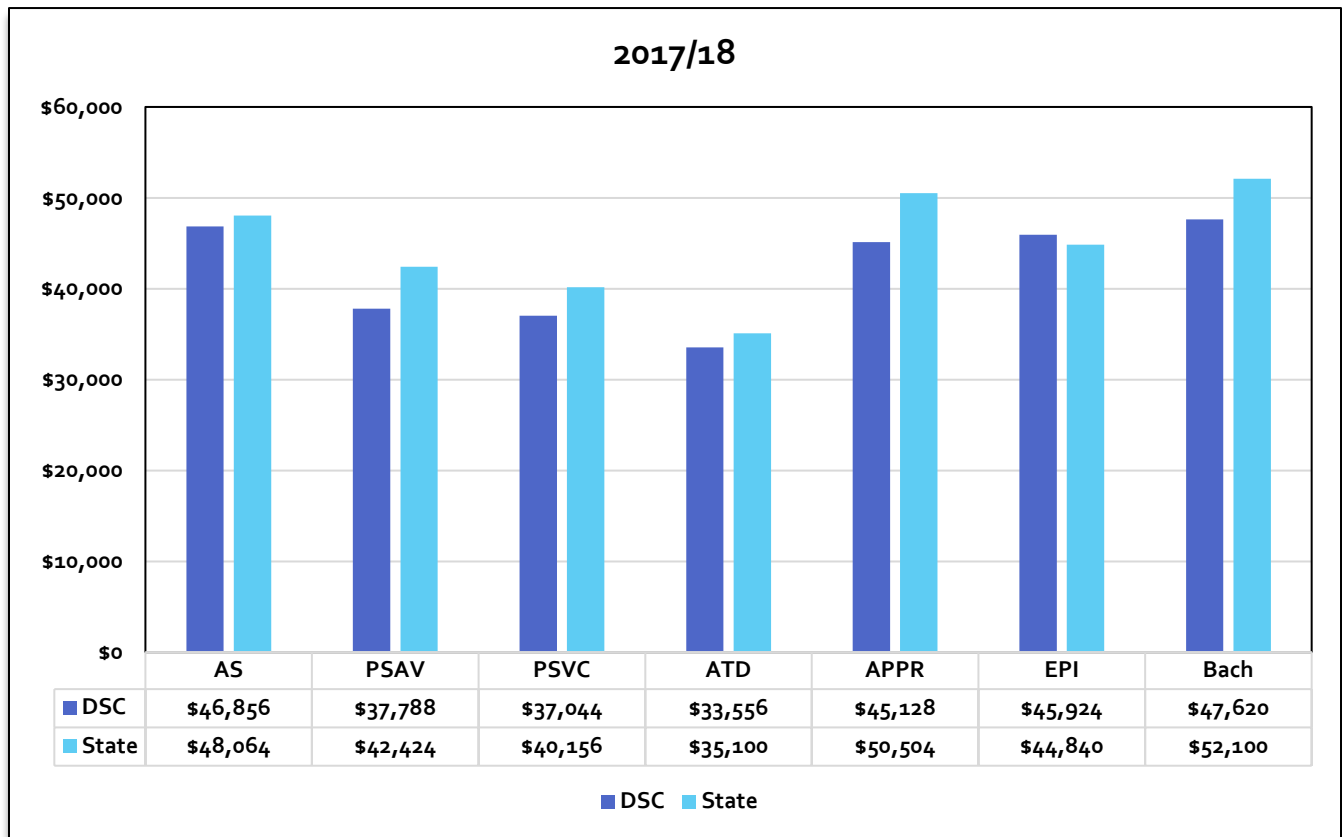


Source: Florida Education & Training Placement Information Program (FETPIP)

¹⁵ Data only available for programs with 10 or more graduates.

Average Annual Wages Earned by Degree Type

Graduate Year	AS	PSAV	PSVC	ATD	APPR	EPI	Bach
2013/2014	\$42,180	\$32,520	\$35,496	\$32,340	\$37,336	\$36,112	\$41,460
2014/2015	\$46,648	\$34,180	\$37,568	\$32,908	N/A ¹⁷	N/A ¹⁷	\$45,756
2015/2016	\$45,792	\$34,524	\$39,780	\$32,732	\$43,724	\$41,832	\$47,412
2016/2017	\$46,888	\$36,164	\$44,364	\$29,468	\$43,252	\$42,976	\$49,104
2017/2018	\$46,856	\$37,788	\$37,044	\$33,556	\$45,128	\$45,924	\$47,620



Source: Florida Education & Training Placement Information Program (FETPIP)

¹⁷ Data only available for programs with 10 or more graduates.

Licensure / Certification Exam Pass Rates

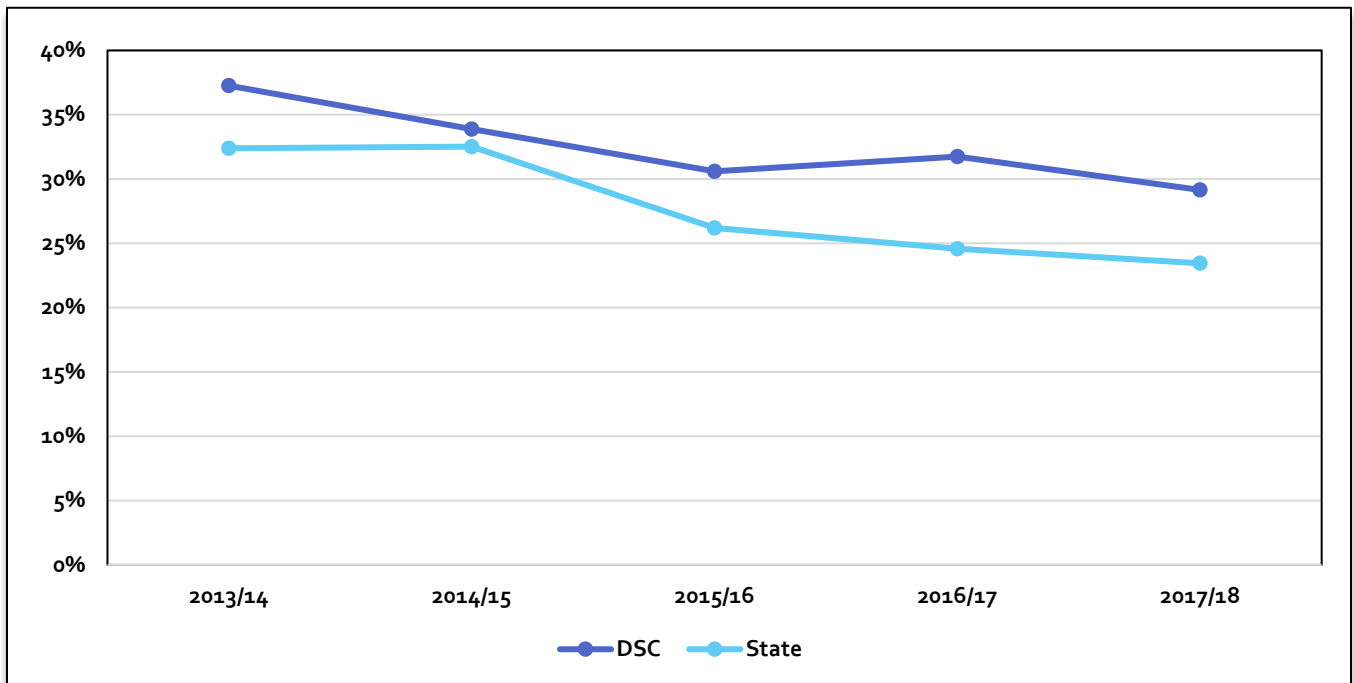
Program	2014/15	2015/16	2016/17	2017/18	2018/19
Barbering	94.0%	86.0%	92.0%	95.0%	90.0%
Corrections	84.0%	92.0%	88.0%	95.3%	82.0%
Cosmetology	89.0%	86.0%	89.0%	86.0%	93.0%
Dental Hygiene	100.0%	100.0%	100.0%	100.0%	100.0%
Emergency Medical Technician	74.0%	79.2%	66.0%	71.0%	65.7%
Firefighting	91.0%	84.0%	78.0%	79.0%	84.3%
Health Information Technology ¹⁸	100.0%	100.0%	100.0%	85.0%	75.0%
Law Enforcement	83.0%	80.0%	85.6%	79.3%	72.0%
Massage Therapy	92.0%	88.0%	100.0%	89.0%	75.0%
Medical Assisting ¹⁸	79.0%	94.0%	83.0%	93.0%	69.0%
Nursing	83.5%	85.5%	88.7%	92.0%	90.3%
Occupational Therapy Assistant	92.0%	96.0%	100.0%	94.0%	86.0%
Paramedic	99.0%	83.3%	100.0%	81.0%	80.3%
Physical Therapy Assistant	100.0%	96.0%	100.0%	100.0%	91.3%
Practical Nursing	95.0%	93.9%	92.7%	82.1%	91.6%
Radiography	100.0%	100.0%	100.0%	100.0%	100.0%
Respiratory Care	88.0%	87.0%	85.0%	85.0%	95.0%
Surgical Technology ¹⁸	78.0%	80.0%	60.0%	83.0%	71.4%

¹⁸ Certification not required for employment.

Prior Year Public High School Graduate Capture Rate

FLDOE Accountability Measure

Year Enrolled at DSC	Number of Graduates	Number Captured at DSC	DSC Capture Rate	State Capture Rate
2013/2014	4,273	1,592	37.3%	32.4%
2014/2015	4,294	1,455	33.9%	32.5%
2015/2016	4,426	1,355	30.6%	26.2%
2016/2017	4,581	1,454	31.7%	24.6%
2017/2018	4,665	1,360	29.2%	23.5%



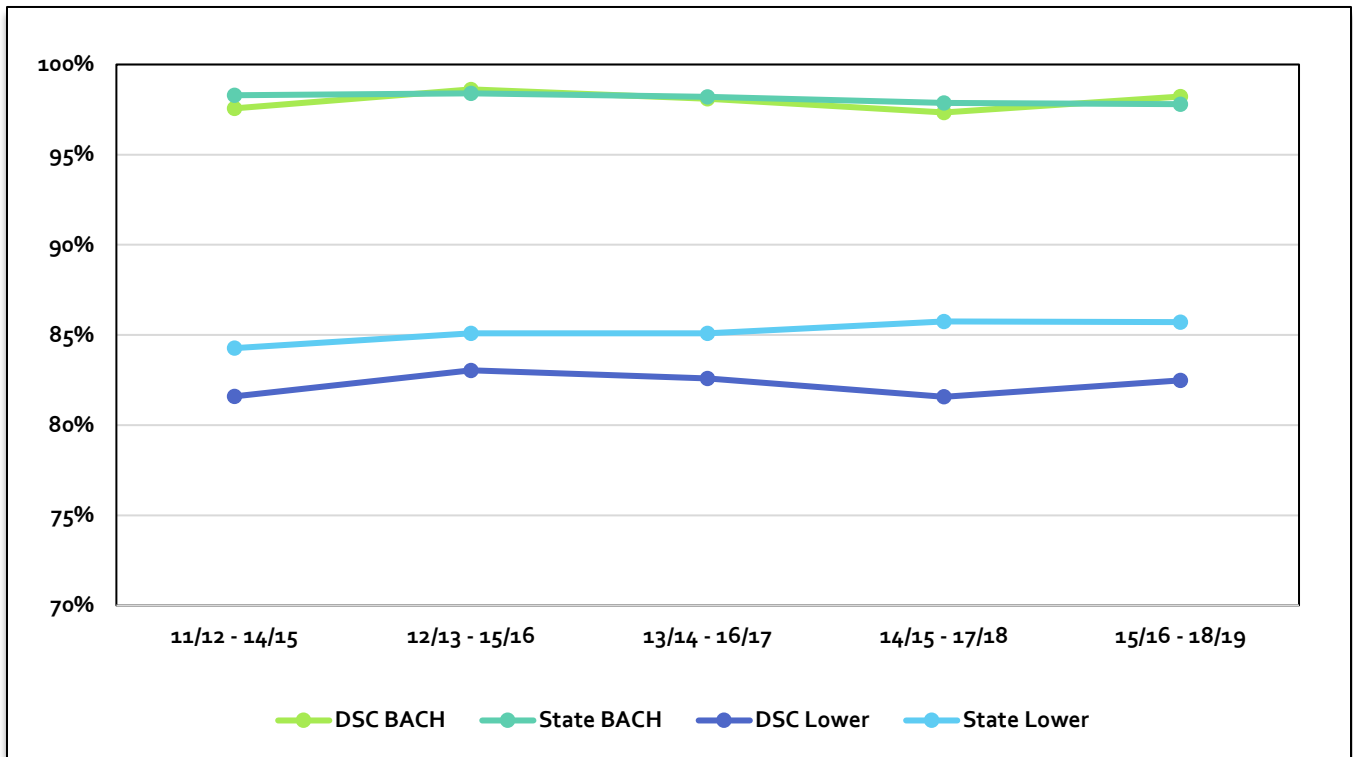
Enrollment is limited to prior year public high school graduates from the DSC service area (Volusia and Flagler counties).

Source: M1P1

Success Rate

FLDOE Accountability Measure

Tracking Period	AA		AS/AAS		PSVC/ATD		Bach	
	DSC	State	DSC	State	DSC	State	DSC	State
2011/12 – 2014/15	81.1%	84.8%	82.6%	79.4%	86.8%	91.1%	97.6%	98.3%
2012/13 – 2015/16	83.5%	85.7%	80.9%	79.6%	83.0%	91.4%	98.6%	98.4%
2013/14 – 2016/17	82.2%	85.5%	82.9%	80.1%	87.8%	92.0%	98.1%	98.2%
2014/15 – 2017/18	81.2%	86.0%	81.6%	82.3%	87.9%	91.8%	97.3%	97.9%
2015/16 – 2018/19	81.9%	85.6%	85.1%	82.2%	89.7%	94.8%	98.2%	97.8%



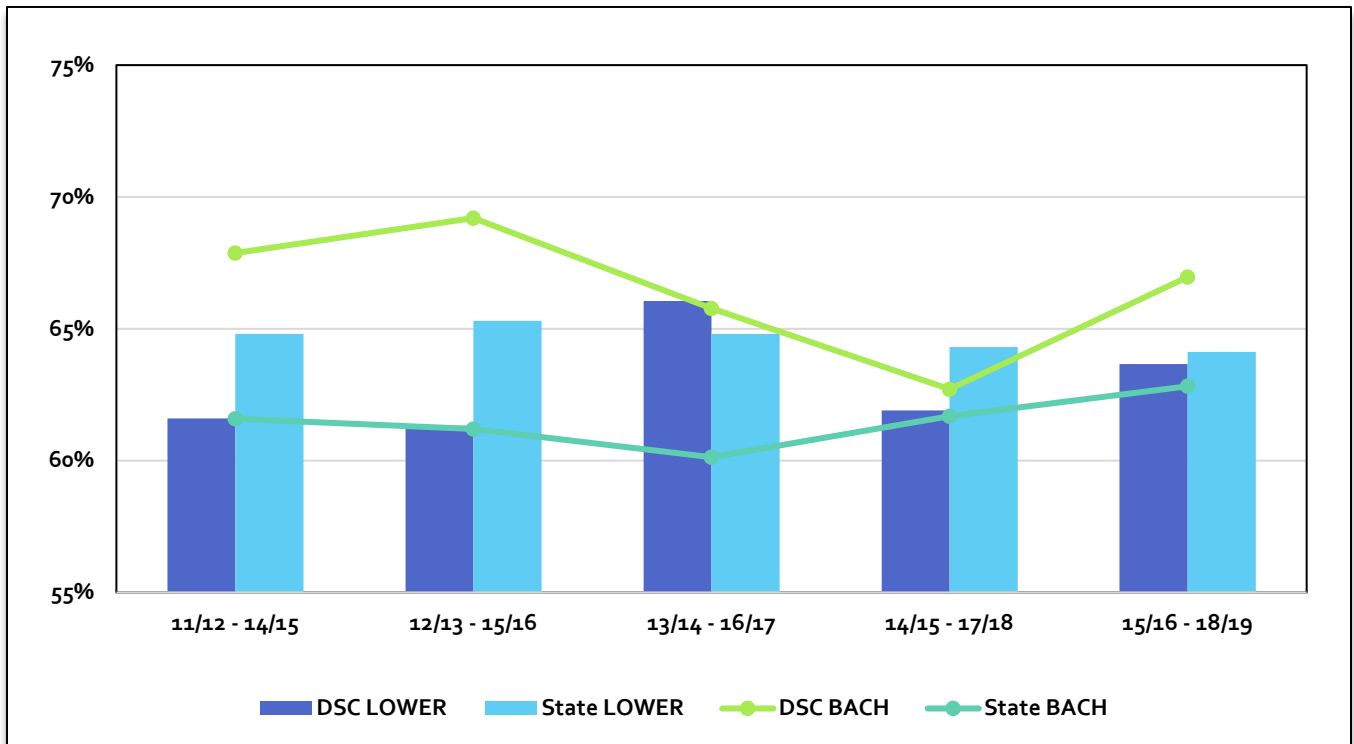
Success captures status of FTIC students who graduated, are still enrolled in good standing (GPA ≥ 2.0), or left in good standing measured after 4 years for AA/AS/AAS (who completed at least 18 college-level credits), after 2 years for PSVC/ATD (who completed at least 9 college-level credits), and after 4 years for first time BAS/BS students.

Source: M1P2

Retention Rate

FLDOE Accountability Measure

Tracking Period	AA		AS/AAS		PSVC/ATD		Bach	
	DSC	State	DSC	State	DSC	State	DSC	State
2011/12 – 2014/15	62.8%	65.6%	51.9%	54.4%	79.3%	90.4%	67.9%	61.6%
2012/13 – 2015/16	60.6%	66.1%	58.0%	53.1%	89.4%	91.0%	69.2%	61.2%
2013/14 – 2016/17	65.8%	65.2%	58.2%	53.2%	87.8%	91.7%	65.8%	60.1%
2014/15 – 2017/18	61.5%	64.5%	54.6%	54.7%	89.4%	91.9%	62.7%	61.7%
2015/16 – 2018/19	62.7%	63.8%	63.2%	49.6%	82.8%	92.1%	67.0%	62.8%



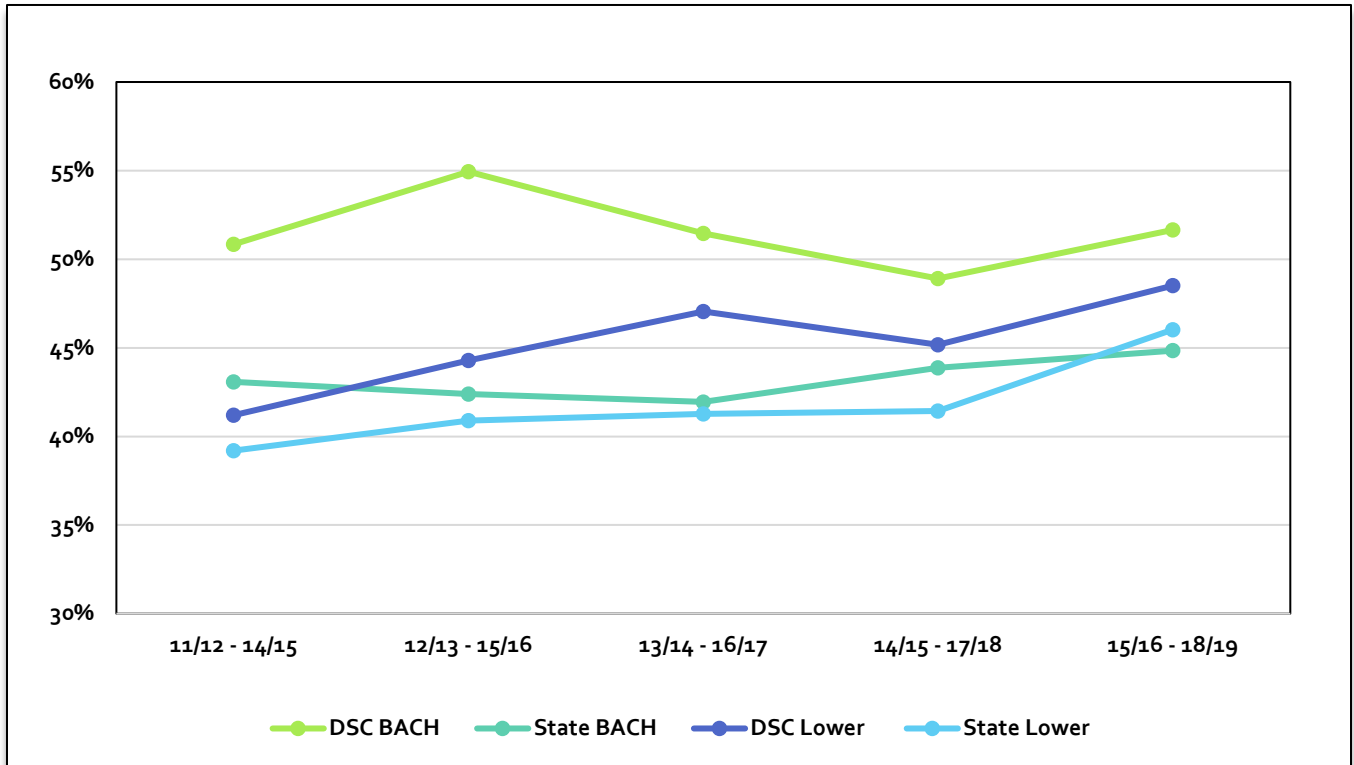
Retention captures status of FTIC students who graduated or are still enrolled measured after 4 years for AA/AS/AAS (who completed at least 18 college-level credits), after 2 years for PSVC/ATD (who completed at least 9 college-level credits), and after 4 years for first time BAS/BS.

Source: M1P2

Graduation Rates

FLDOE Accountability Measure

Tracking Period	AA		AS/AAS		PSVC/ATD		Bach	
	DSC	State	DSC	State	DSC	State	DSC	State
2011/12 – 2014/15	43.1%	41.5%	24.5%	17.0%	73.6%	76.8%	50.9%	43.1%
2012/13 – 2015/16	44.7%	42.6%	33.5%	18.9%	78.7%	81.0%	54.9%	42.4%
2013/14 – 2016/17	46.6%	42.5%	37.1%	19.3%	77.0%	81.6%	51.5%	42.0%
2014/15 – 2017/18	44.0%	42.3%	40.3%	23.3%	78.8%	81.2%	48.9%	43.9%
2015/16 – 2018/19	45.9%	43.9%	61.4%	48.7%	74.1%	88.1%	51.7%	44.8%



Status of FTIC students after 4 years for AA/AS/AAS (who completed at least 18 college-level credits), after 2 years for PSVC/ATD (who completed at least 9 college-level credits), and after 4 years for first time BAS/BS students.

Source: M1P2

Abbreviations/Acronyms

AA - Associate in Arts	FCS - Florida State College System
AAS - Associate in Applied Science	FPC - Flagler/Palm Coast
AE - Adult Education	FTE - Full-Time Equivalent
AHS - Adult High School	GED - General Educational Development test of high school diploma equivalency
AP - Advanced and Professional	HC - Headcount
APPR - Apprenticeship	NSB - New Smyrna Beach
AS - Associate in Science	PSAV - Postsecondary Adult Vocational
ATC - Advanced Technology Center	PSV - Postsecondary Vocational
ATD - Applied Technology Diploma	PSVC - Postsecondary Vocational Certificate
Bach - Baccalaureate	SUS - Florida Public State University System
Cert - Certificate	UD - Upper Division (College credit courses in the 3000 level or Above)
CPRP - College Preparation	UGD - Undergraduate
CTE - Career and Technical Education	VP - Vice President
DSC - Daytona State College	
EPI - Educator Preparation Institute	