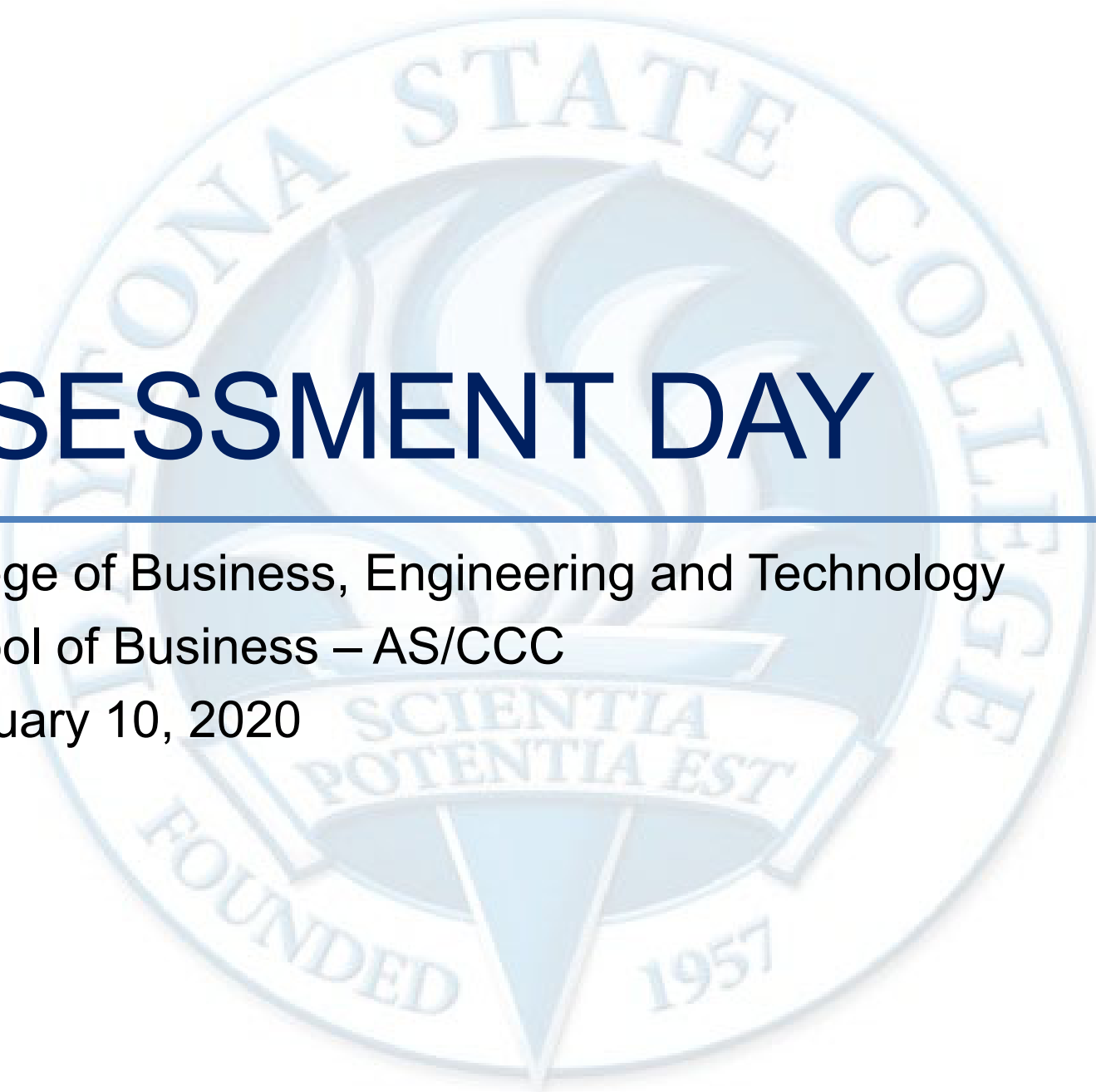


ASSESSMENT DAY

College of Business, Engineering and Technology

School of Business – AS/CCC

February 10, 2020



Strengths

Challenges

Recommendations

Academic Assessment

	LEVEL	FOCUS	CONDUCTED BY	FREQUENCY
Academic Success Committee	Program	<ul style="list-style-type: none"> Quality of assessment practices 	Committee of peers	Years 1 & 2
Instructional Program Review	Program / Cluster	<ul style="list-style-type: none"> Enrollment, retention, completion Industry certifications and job placement Program budget and staffing Advisory committees Curriculum changes 	Committee of peers	Year 3
Assessment Day	Course/ Program	<ul style="list-style-type: none"> Enrollment by demographics Graduation and retention Average class size Course success rate Placement rate SLOs, PLOs and ILOs 	Program Chair and Faculty	Years 1, 2, 3

Programs – Certificates and 2 Year Degree Programs

[2084 - Accounting Technology](#)

[0943 - Accounting Technology Management](#)

[0935 - Accounting Technology Operations](#)

[2233 - Broadcast TV Production](#)

[0824 - Broadcast TV Production](#)

[0979 - Television Studio Production](#)

[2059 - Business Administration](#)

[0916 - Business Management](#)

[0913 - Business Operations - Entrepreneurship](#)

[2221 - Industrial Management Technology \(Limited Access Program\)](#)

[0817 - Marketing, Sales and Service - Entrepreneurship](#)

[2229 - Office Administration \(General, Legal or Medical Specializations\)](#)

[0914 - Office Management](#)

[0926 - Office Support \(Technical Certificate\)](#)

[2062 - Paralegal Studies \(Legal Assisting\)](#)

Action Items from Last Assessment Day

Assessment Day (2/11/2019) - Certificates and 2 Year Degree Programs

- Identify and implement strategies to increase persistence rates
- New accounting bachelor's degree beginning Fall 2020
- Anita and Karla to get together and see possibility to combined A.S. and certificates outcome assessment
- Institutional Research:
 - Remove co-ops, directed studies, etc. from average class size numbers;
 - Time to degree

Program Learning Outcomes

AS Business Administration #2059

1. Generate effective communication of ideas, concepts and terminology.
2. Identify legal and ethical concerns and demonstrate social responsibility in business situations.
3. Explain how economic theories impact businesses and consumers.
4. Interpret and apply business related theories and technology to problems, cases, or research papers.
5. Utilize appropriate software and prepare applicable business documentation.
6. Create and analyze financial information for management related decisions.
7. Formulate a marketing plan for a company that incorporates marketing concepts.
8. Develop a business plan for a new business venture.

Business Management Certificate #0916

1. Prepare financial information for management-related decisions.
2. Generate effective communication of ideas, concepts and terminology.
3. Apply business related theories to problems, cases, or research papers.
4. Create business documentation using appropriate software.
5. Formulate a company marketing plan using marketing concepts.
6. Develop a business plan for a new business venture.

Program Learning Outcomes

Business Operations – Entrepreneurship Certificate #0913

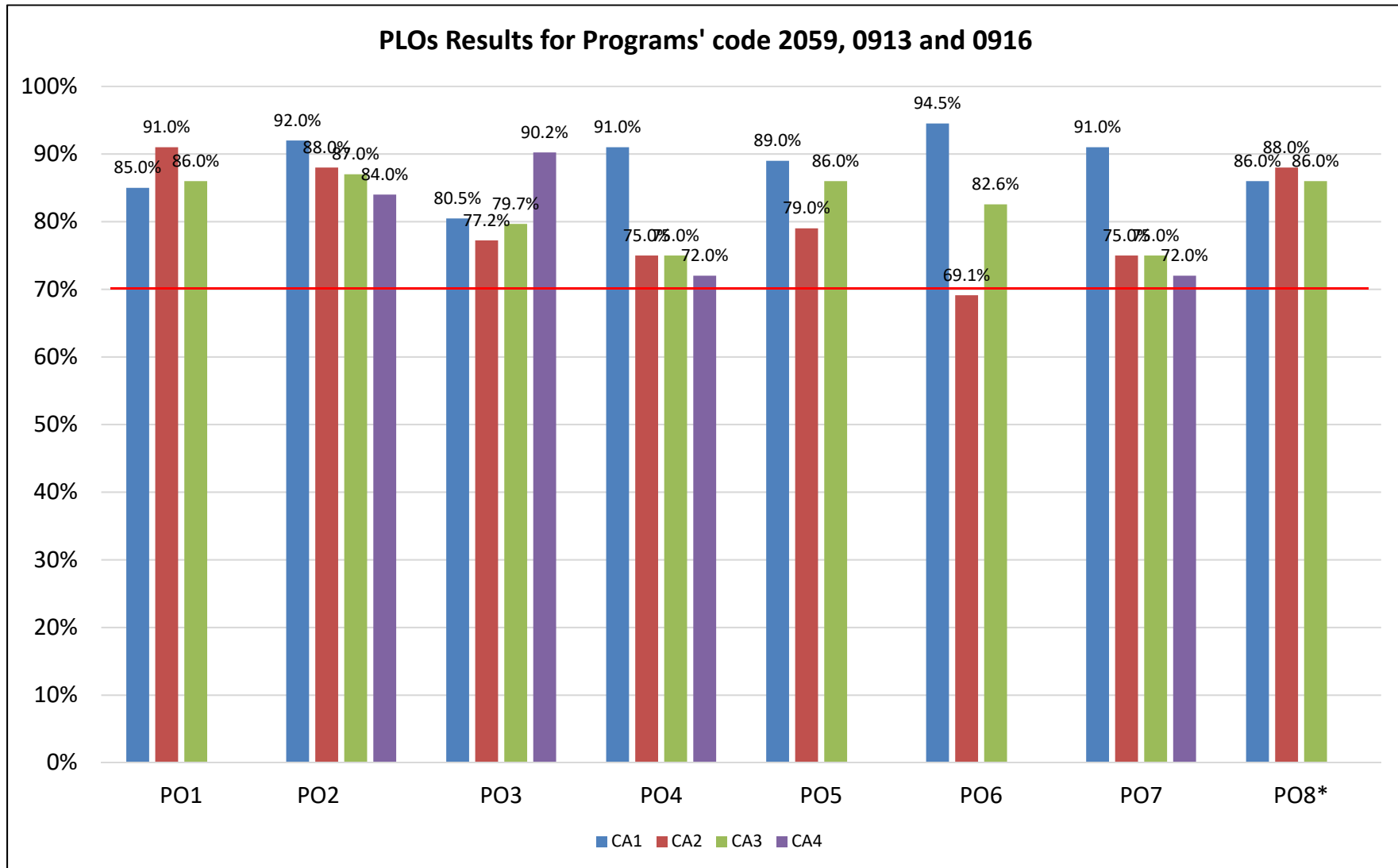
1. Prepare financial information for management-related decisions.
2. Generate effective communication of ideas, concepts and terminology.
3. Apply business related theories to problems, cases, or research papers.
4. Create business documentation using appropriate software.
5. Formulate a company marketing plan using marketing concepts.
6. Develop a business plan for a new business venture.

Marketing, Sales and Service - Entrepreneurship, A.S. Certificate #0817

Graduates of the program will be able to:

1. Identify various marketing strategies or service techniques.
2. Demonstrate effective communication via marketing strategy.
3. Plan the components of a marketing strategy.
4. Develop a business plan.

Program Learning Outcome Assessment Results – 2018-2019



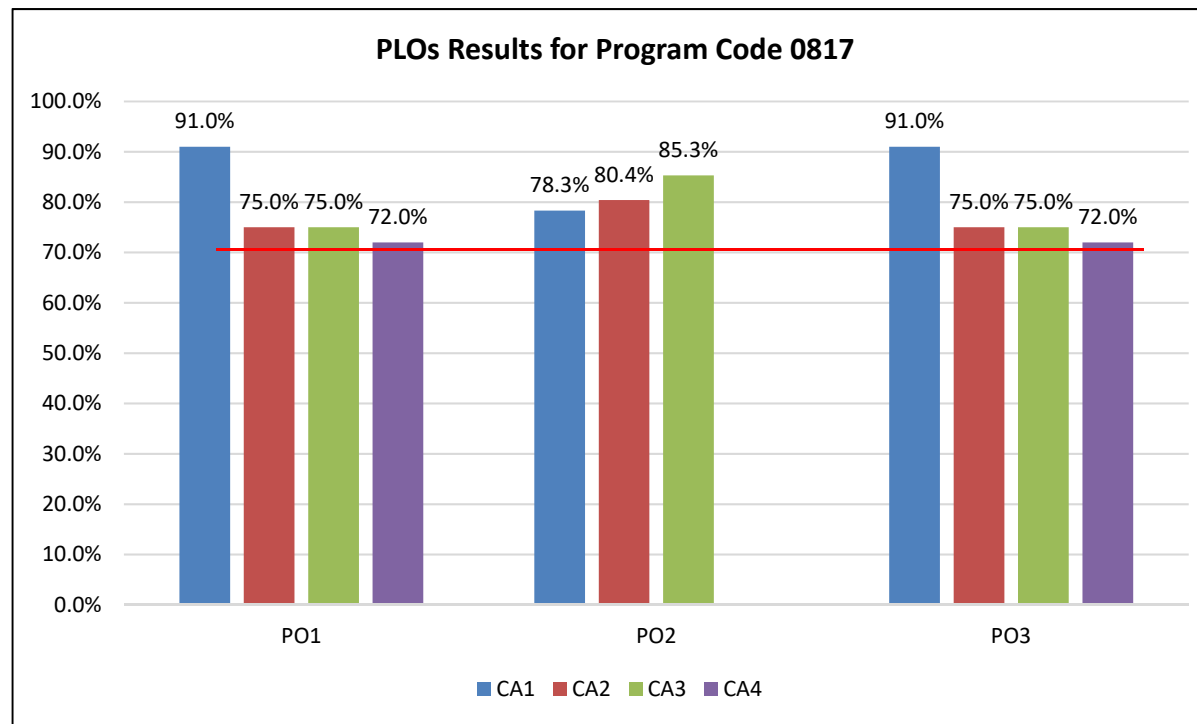
CA: Critical Assignment

Program Learning Outcome Assessment Results – 2018-2019

Sales Entrepreneurship Certificate #0817

Graduates of the program will be able to:

1. Create a project for an organization that incorporates marketing research and concepts.
2. Differentiate social media marketing platforms, options and their beliefs to organizations.
3. Plan and organize a sales presentation.
4. Identify methods for evaluating the effectiveness of various advertising media.



CA: Critical Assignment

Program Learning Outcomes

AS Accounting Technology #2084

1. Demonstrate clear and effective communication
2. Solve business problems using critical thinking.
3. Identify and discuss legal and ethical issues in tax preparation, financial planning, and the business environment.
4. Use appropriate software and hardware to produce tax returns, financial plans, and financial reports.
5. Demonstrate a basic working knowledge of estate planning, investment planning and cash management.
6. Apply Generally Accepted Accounting Principles to record, summarize, and report business transactions.
7. Demonstrate an understanding of corporate finance in the field of business.
8. Identify sound measures of internal control and protection of business assets.
9. Demonstrate an understanding of the global business environment.

Program Learning Outcomes

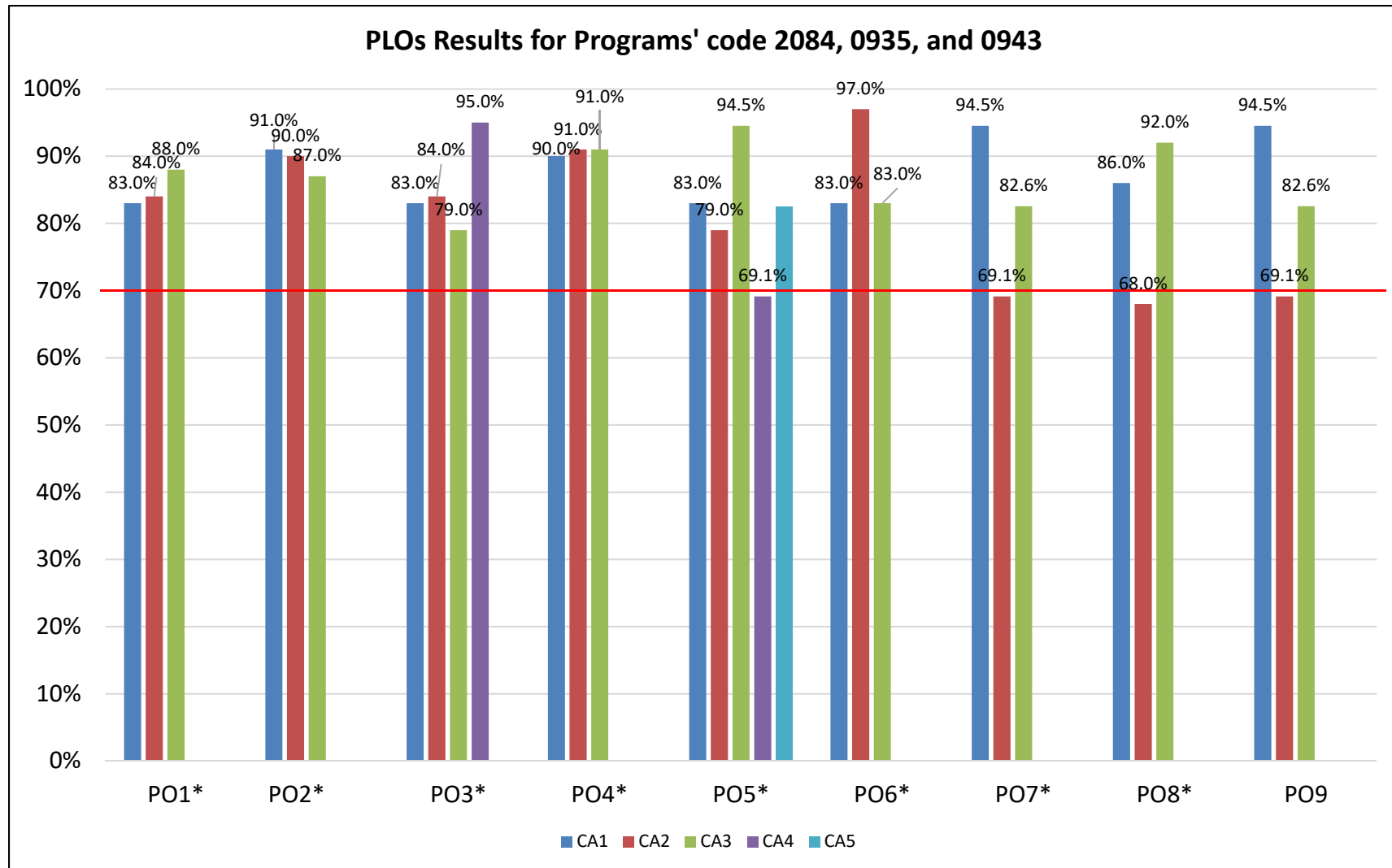
Accounting Technology Operations – Tax Preparation - #0935

1. Demonstrate clear and effective communication
2. Solve business problems using critical thinking.
3. Identify and discuss legal and ethical issues in tax preparation, financial planning, and the business environment.
4. Use appropriate software and hardware to produce tax returns, financial plans, and financial reports.
5. Demonstrate a basic working knowledge of estate planning, investment planning and cash management.
6. Apply Generally Accepted Accounting Principles to record, summarize, and report business transactions.

AS Certificate – Accounting Applications/Computerized #0943

1. Demonstrate clear and effective communication
2. Solve business problems using critical thinking.
3. Identify and discuss legal and ethical issues in tax preparation, financial planning, and the business environment.
4. Use appropriate software and hardware to produce tax returns, financial plans, and financial reports.
5. Demonstrate a basic working knowledge of estate planning, investment planning and cash management.
6. Apply Generally Accepted Accounting Principles to record, summarize, and report business transactions.
7. Demonstrate an understanding of corporate finance in the field of business.

Program Learning Outcome Assessment Results – 2018-2019



CA: Critical Assignment

*: Results given for students that completed the course (No Ws or FNs included)

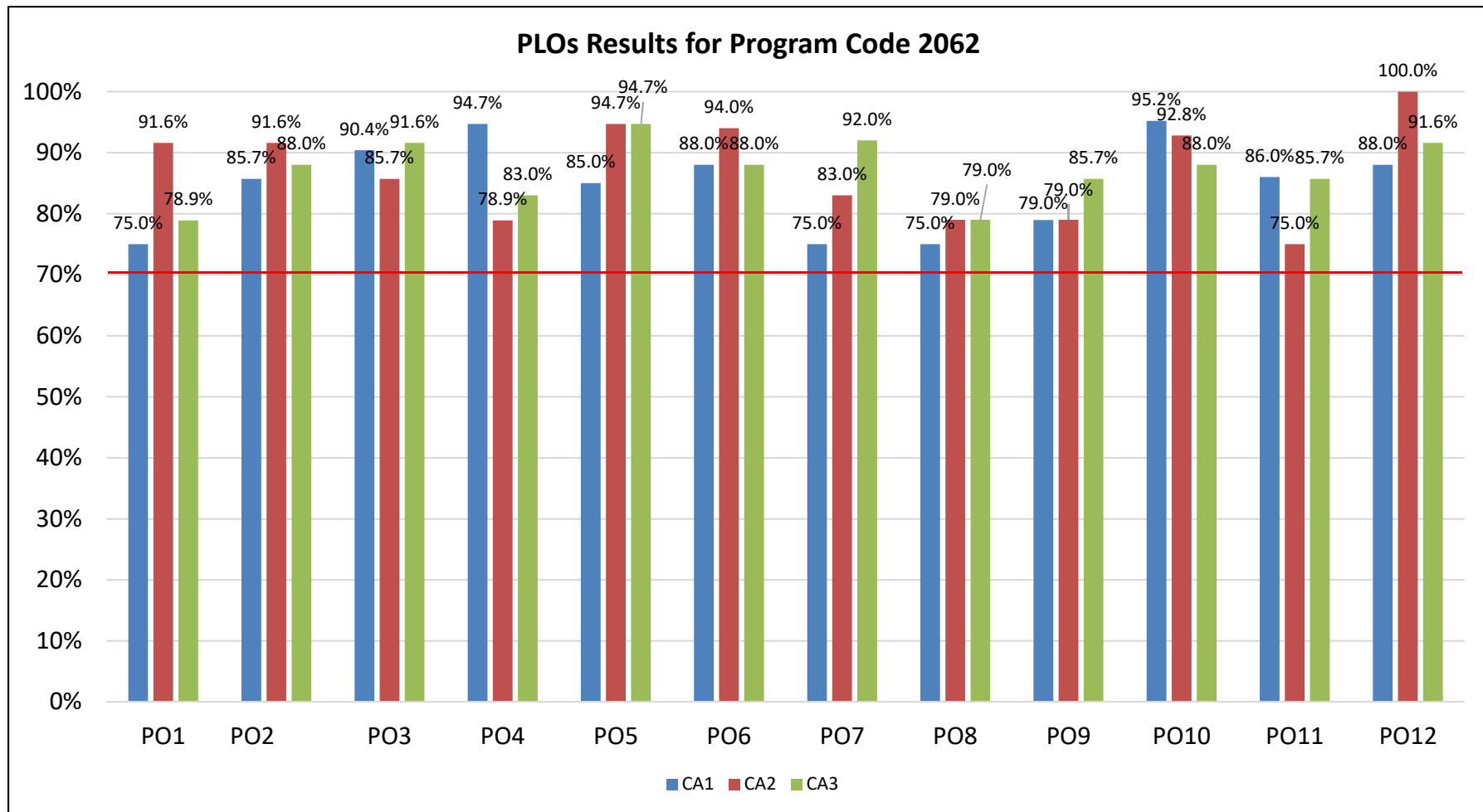
Program Learning Outcomes

AS Paralegal Studies (Legal Assisting) #2062

1. Communicate in a clear and effective manner.
2. Identify and apply ethical and professional standards of the paralegal profession.
3. Demonstrate ability to utilize the law library and electronic legal research to create well-written legal documents.
4. Apply knowledge of tort law, constitutional law, and criminal law concepts to analyze factual situations.
5. Demonstrate knowledge of all phases of litigation practice and procedure.
6. Examine real property law and its application to real property transactions.
7. Analyze issues related to estate planning and probate administration concepts and their application to probate procedures.
8. Identify the fundamental principles of the law of business organizations.
9. Explain how contract law and the Uniform Commercial Code impacts individuals and business entities.
10. Demonstrate knowledge of entrepreneurship, management techniques and procedures.
11. Analyze family law situations by applying family law and procedure.
12. Identify and demonstrate employability skills.

Program Learning Outcome Assessment Results – 2018-2019

AS Paralegal Studies (Legal Assisting) #2062

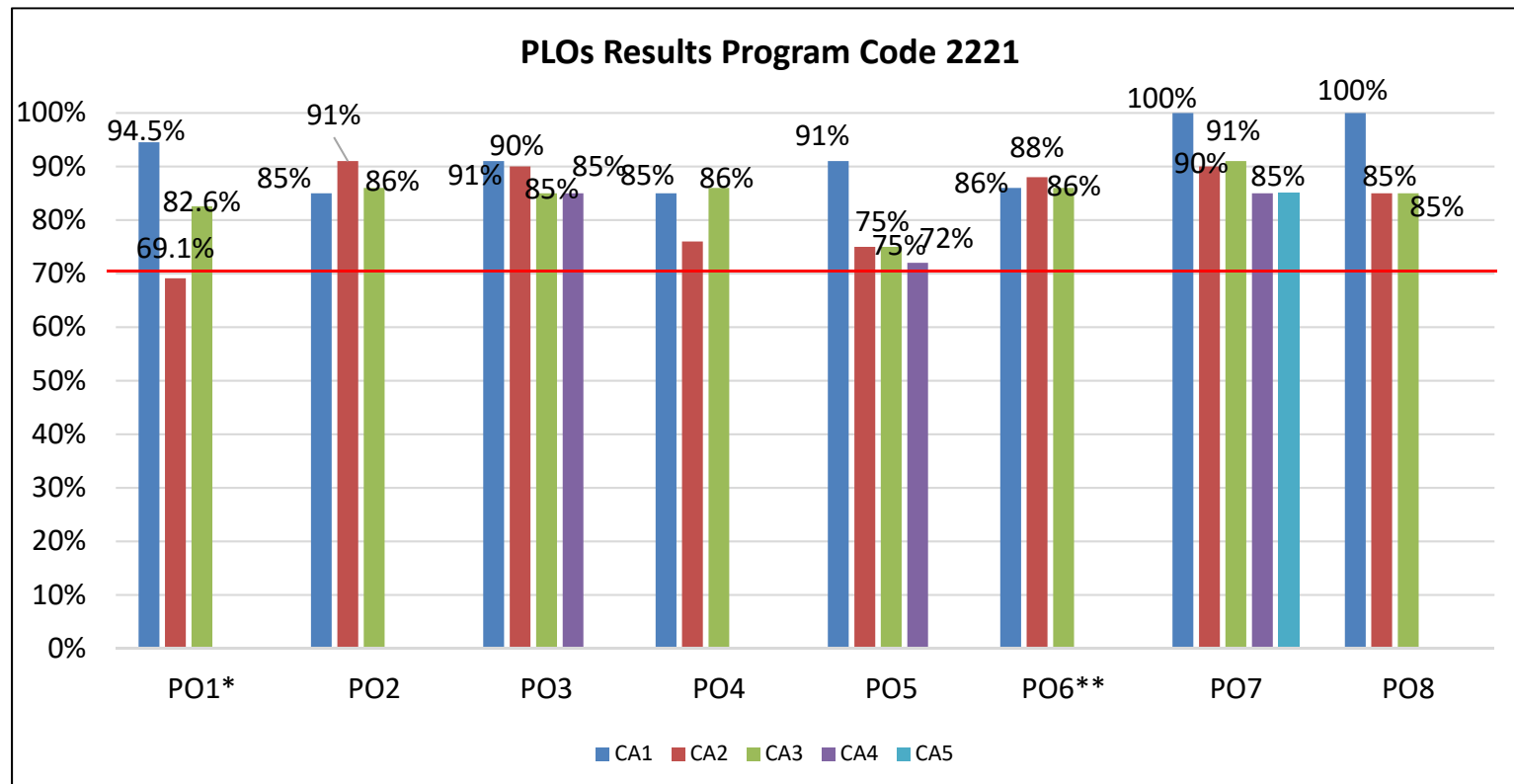


CA: Critical Assignment

Program Learning Outcome Assessment Results – 2018-2019

AS Industrial Management, code 2221

1. Prepare and use financial information to support decision making.
2. Generate effective communication of ideas, concepts and terminology.
3. Interpret and apply business related theories and technology to problems, cases, or research papers.
4. Utilize appropriate software and prepare applicable business documentation.
5. Formulate a marketing plan for a company that incorporates marketing concepts.
6. Develop a business plan for a new business venture.
7. Demonstrate proficiency in a technical field including theory, applications, troubleshooting and safety.
8. Demonstrate the ability to plan and initiate projects related to the field.



CA: Critical Assignment, *: Course completer, **: Attempted assignment

Program Learning Outcomes

AS Office Administration #2229

1. Communicate in a clear and effective manner.
2. Perform business computations, records and office management skills.
3. Perform keyboarding and document processing activities.
4. Demonstrate knowledge of human relation skills.
5. Demonstrate employability skills.
6. Perform information processing and transmittal activities.
7. Develop leadership skills.
8. Perform consumer purchasing activities.
9. Perform decision making activities.

Certificate Office Management #0914

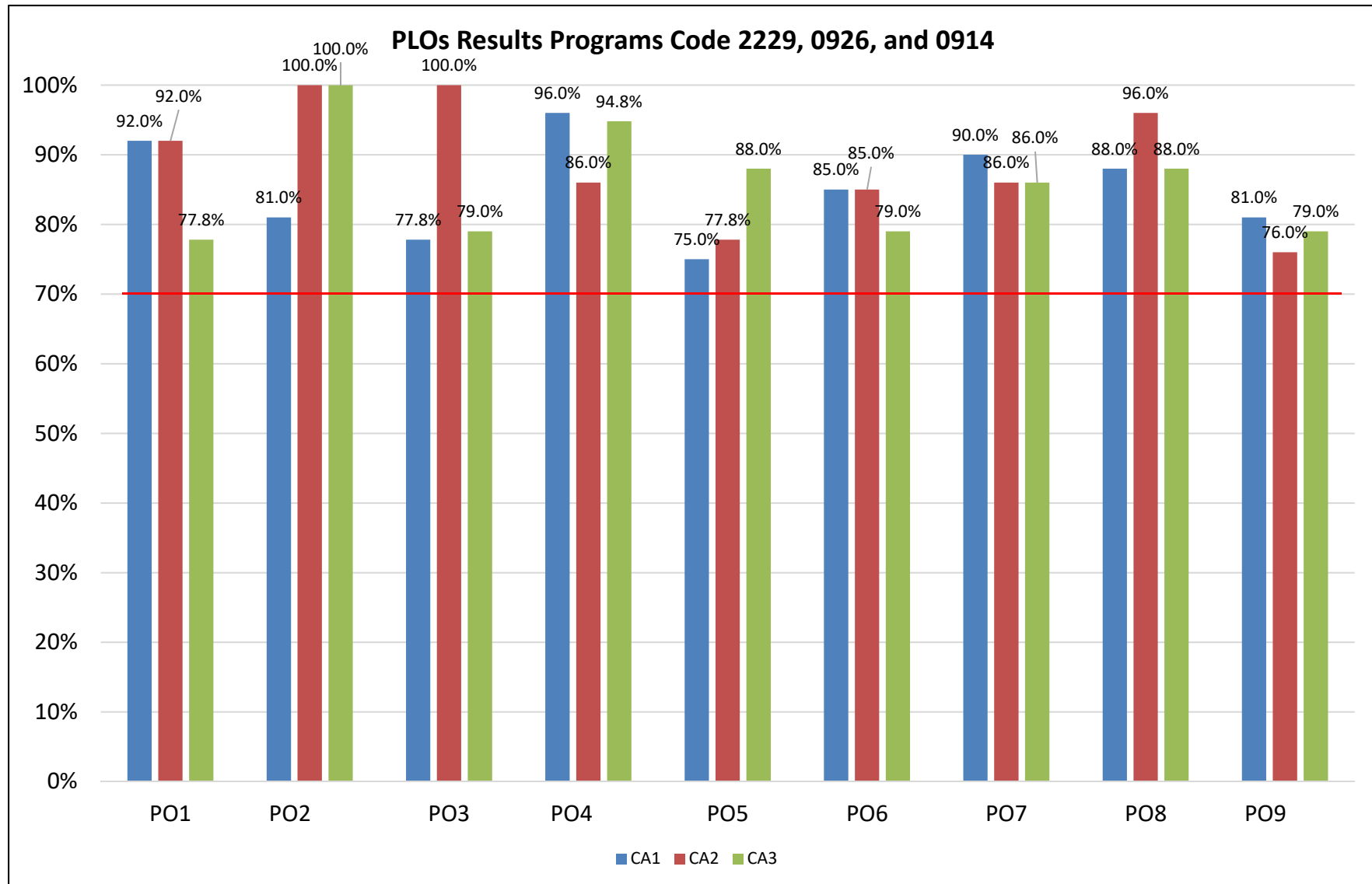
1. Communicate in a clear and effective manner.
2. Perform keyboarding and document processing activities.
3. Demonstrate knowledge of human relations skills.
4. Demonstrate employability skills.
5. Develop leadership skills.
6. Perform information processing and transmittal activities.
7. Perform decision-making activities as related to business software and the office environment.
8. Perform business computations, records and office management skills.

Program Learning Outcomes

Certificate Office Support (Technical) #0926

1. Communicate in a clear and effective manner.
2. Perform keyboarding and document processing activities.
3. Demonstrate knowledge of human relations.
4. Demonstrate employability skills.
5. Perform information processing and transmittal activities.
6. Perform decision-making activities as related to business software and the office environment.

Program Learning Outcome Assessment Results – 2018-2019



CA: Critical Assignment

Level of Achievements at 70% and 80%

Program Learning Outcomes

Broadcast TV Production A.S. #2233

1. Demonstrate effective written and oral communication skills.
2. Develop and produce a TV or video based project.
3. Direct a TV production, video production, or webcast.
4. Create a marketing and distribution plan. Demonstrate team skills.
5. Operate studio and field video cameras.
6. Demonstrate knowledge of appropriate industry laws, regulations, trade terminology, and ethical practices.
7. Design and generate graphic elements.
8. Plan a production set and acquire appropriate production resources.
9. Create appropriate lighting for location and/or set productions.
10. Record, mix, and edit audio resources.
11. Operate control room equipment.
12. Organize and edit video resources.
13. Demonstrate safe and efficient work practices.

Program Learning Outcomes

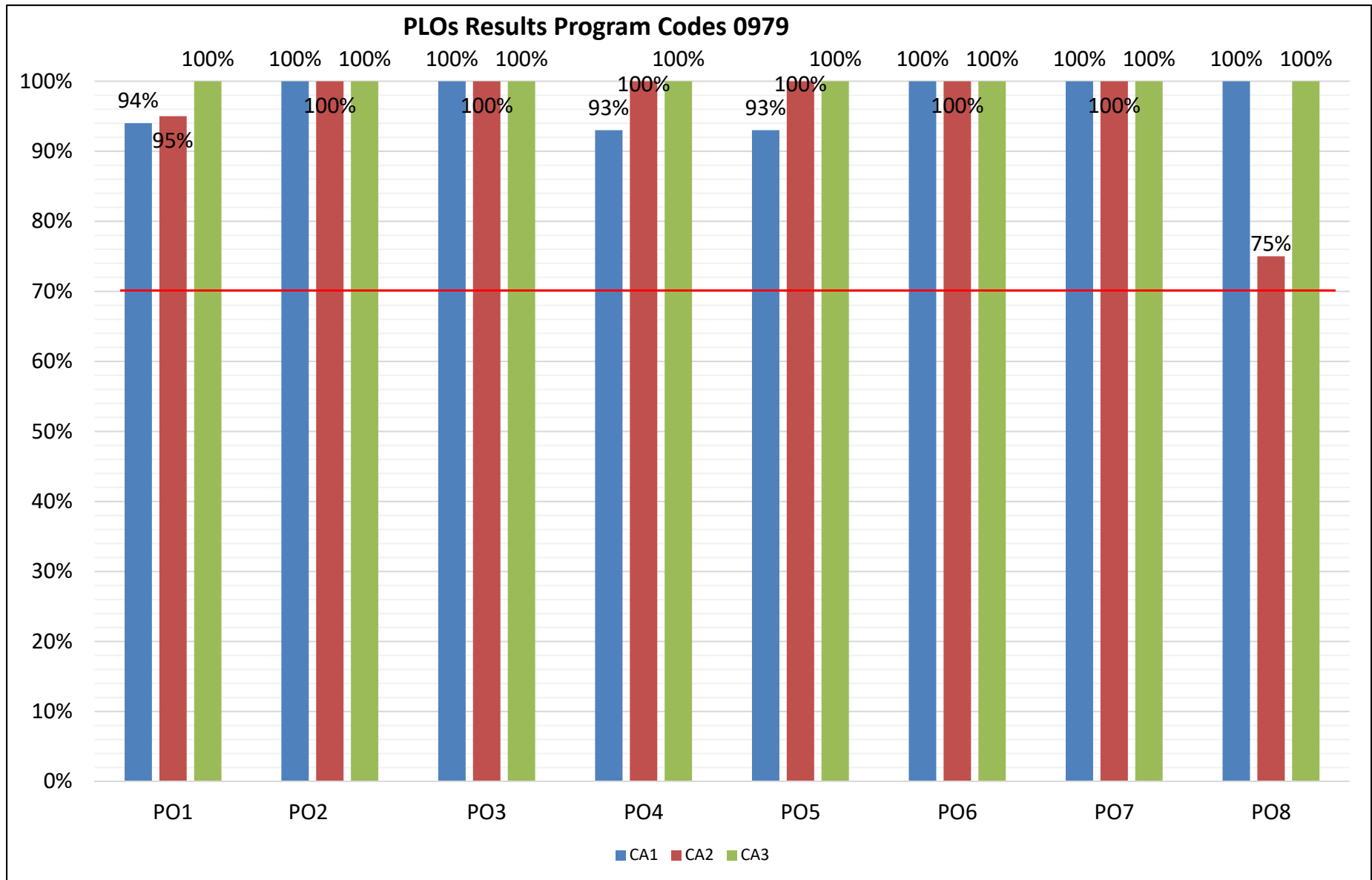
Television Studio Production Certificate #0979

1. Exhibit team skills.
2. Model safe and efficient work practices.
3. Create appropriate lighting for location and/or set productions.
4. Operate a video camera
5. Generate studio and/or location footage.
6. Record mix, and edit audio resources.
7. Use production control room equipment.
8. Organize and edit video resources

Broadcast TV Production Certificate #0824

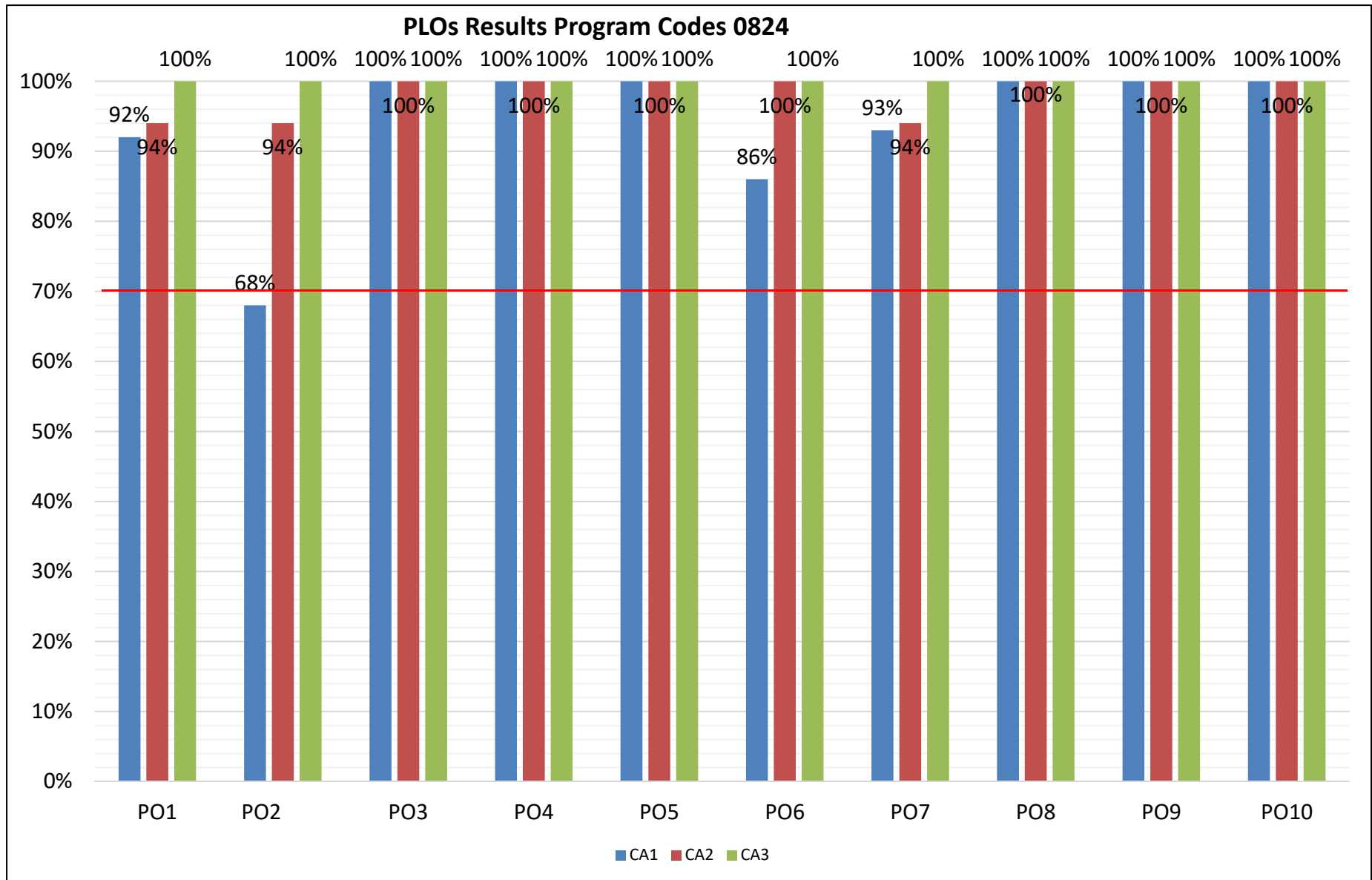
1. Demonstrate team skills.
2. Demonstrate safe and efficient work practices.
3. Generate a production schedule.
4. Plan a production set.
5. Create appropriate lighting for location and/or set productions.
6. Operate a video camera.
7. Shoot studio and/or location footage.
8. Record, mix, and edit audio resources.
9. Operate control room equipment.
10. Organize and edit video resources

Program Learning Outcome Assessment Results – 2018-2019



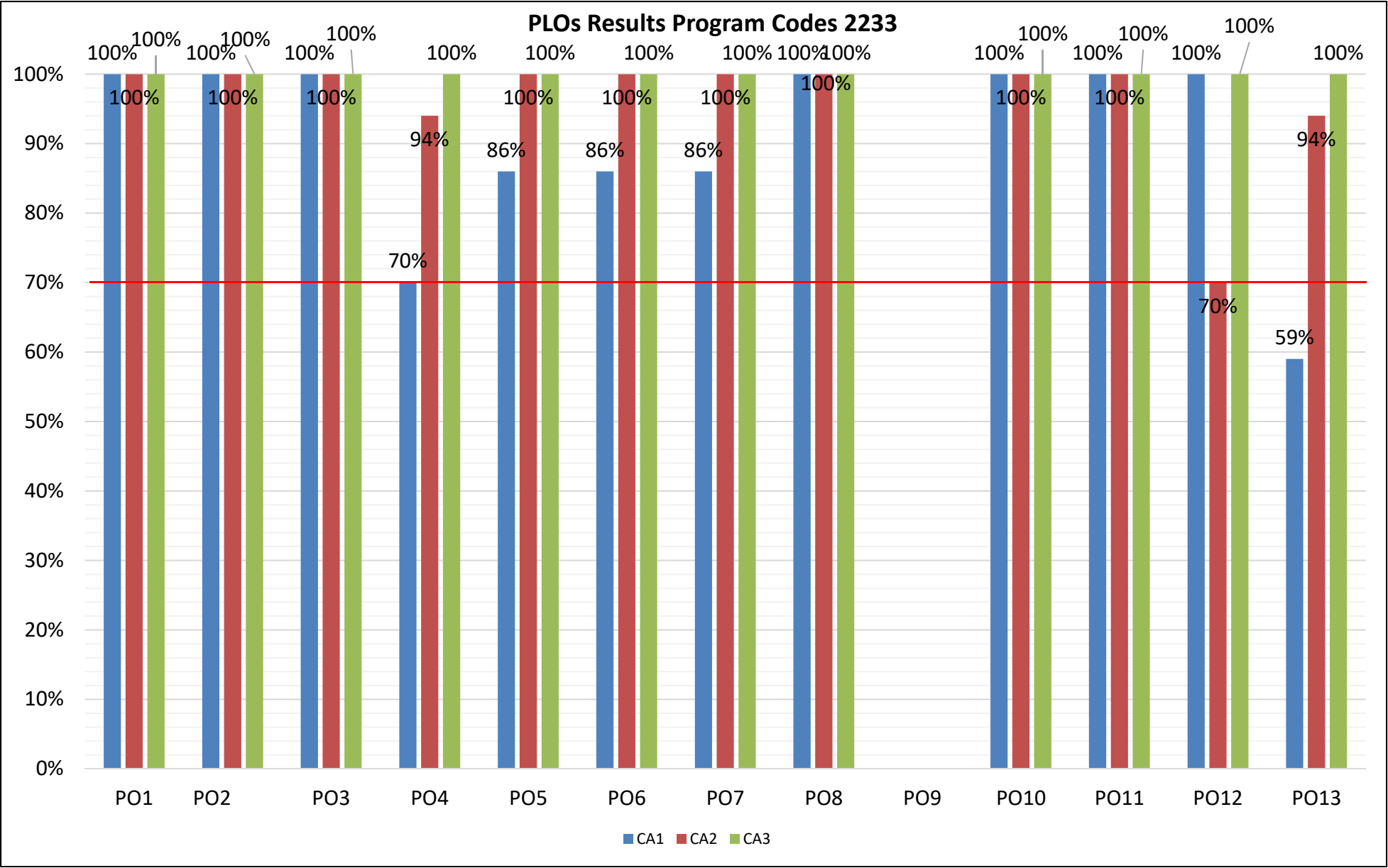
CA: Critical Assignment

Program Learning Outcome Assessment Results – 2018-2019



CA: Critical Assignment

Program Learning Outcome Assessment Results – 2018-2019



CA: Critical Assignment

Assessment Data 2017-2018 and 2018-2019: Programs and Institutional Learning Outcomes

Program	Critical/ Creative Thinking		Communication		Cultural Literacy		Information & Technical Literacy	
	17/18	18/19	17/18	18/19	17/18	18/19	17/18	18/19
0817 - MARKETING, SALES, SER ENT	72%-89%	72%-91%	63%-92%	82%-94%	72%-89%	72-91%	63%-92%	82%-94%
0913 - BUSINESS OPER/ENTREPREN.	72%-89%	72%-91%	95%-100%	86%-88%	72%-89%	72%-91%	77%-92%	79%-89%
0914 - OFFICE MANAGEMENT	87.5%-100%	81%-95%	95.6%-100%	88.8%-91.3%	90%-100%	100%	74.8%-80%	79%-85%
0916 - BUSINESS MANAGEMENT	72%-89%	72%-91%	95%-100%	86%-88%	72%-89%	72%-91%	77%-92%	79%-89%
0926 - OFFICE SUPPORT-TECH. CER	87.5%-100%	81%-95%	95.6%-100%	88.8%-91.3%	90%-100%	100%	74.8%-80%	79%-85%
0935 - ACCOUNTING OPER-TAX PREP	77.5%-86%	83%-91%	75.4%-85.1%	79%-89.5%	80%-86.5%	79%-85%	75%-86%	90%-91%
0943 - ACCOUNTING TECH MGMT	77.5%-86%	83%-91%	75.4%-85.1%	79%-89.5%	80%-86.5%	79%-85%	75%-86%	90%-91%
0979 - TELEVISION STUDIO PROD	100%	100%	77.7%-100%	40%-100%	100%	100%	77%-100%	77%-100%
0824 - BROADCAST TV PROD*	100%	100%	77.7%-100%	40%-100%	100%	100%	77%-100%	77%-100%
2059 - BUSINESS ADMINISTRATION	72%-89%	72%-91%	95%-100%	86%-88%	72%-89%	72%-91%	77%-92%	79%-89%
2062 - PARALEGAL-LEGAL ASST	83.3%-100%	71.4%-91.6%	76%-100%	75%-91.6%	77%-83%	78.9%-94.7%	84%-100%	85.7%-100%
2084 - ACCOUNTING TECHNOLOGY	77.5%-86%	83%-91%	75.4%-85.1%	79%-89.5%	80%-86.5%	79%-85%	75%-86%	90%-91%
2221 - INDUSTRIAL MGMT TECH	72%-89%	72%-91%	95%-100%	85%-91%	72%-89%	72%-91%	77%-92%	81%-86%
2229 - OFFICE ADMINISTRATION	87.5%-100%	81%-95%	95.6%-100%	88.8%-91.3%	90%-100%	100%	74.8%-80%	79%-85%
2233 – BROADCAST TV PROD*	100%	100%	77.7%-100%	40%-100%	100%	100%	77%-100%	77%-100%

*New Program for 2017-2018

Headcount by Major

Major	2014-2015	2015-2016	2016-2017	2017-2018	2018-2019
0817 - MARKETING, SALES, SER ENT	1	2	7	2	3
0824 – BROADCAST TV PROD.			1	6	6
0913 - BUSINESS OPER/ENTREPREN.	5	10	18	8	11
0914 - OFFICE MANAGEMENT	23	19	10	12	10
0916 - BUSINESS MANAGEMENT	57	36	84	46	57
0919 - OFFICE MGMT-MEDICAL	28	14	25	9	1
0926 - OFFICE SUPPORT-TECH. CER		1	11	1	3
0935 - ACCOUNTING OPER-TAX PREP	4	6	13	4	5
0943 - ACCOUNTING TECH MGMT	21	20	30	33	22
0979 - TELEVISION STUDIO PROD	9	9	9	5	6
2059 - BUSINESS ADMINISTRATION	349	332	315	322	326
2062 - PARALEGAL-LEGAL ASST	140	139	122	97	89
2084 - ACCOUNTING TECHNOLOGY	104	104	79	91	103
2221 - INDUSTRIAL MGMT TECH	10	9	10	8	9
2228 - OFFICE ADM-MED SYSTEMS	40	44	35	20	4
2229 - OFFICE ADMINISTRATION	71	46	51	65	63
2233 – BROADCAST TV PROD.				19	23
Total	843	777	819	742	741



Graduates

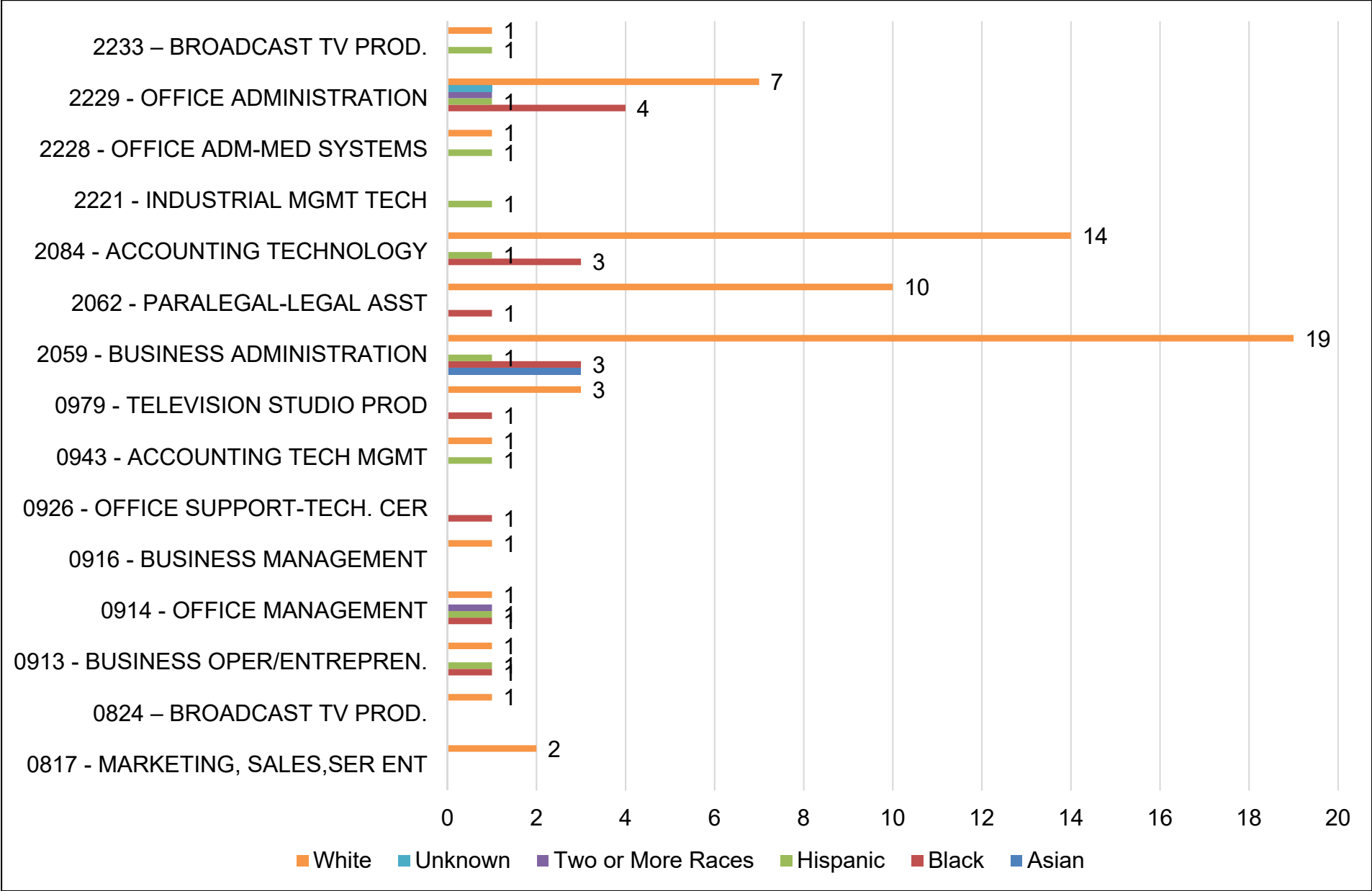
Major	2014-2015	2015-2016	2016-2017	2017-2018	2018-2019
0817 - MARKETING, SALES, SER ENT	6	8	8	34	2
0824 – BROADCAST TV PROD.					1
0913 - BUSINESS OPER/ENTREPREN.	70	39	55	52	3
0914 - OFFICE MANAGEMENT	15	13	4	25	5
0916 - BUSINESS MANAGEMENT	39	23		43	8
0919 - OFFICE MGMT-MEDICAL	6	2	3	4	
0926 - OFFICE SUPPORT-TECH. CER	41	24	3	26	1
0935 - ACCOUNTING OPER-TAX PREP	15	15	4	12	
0943 - ACCOUNTING TECH MGMT	11	9	4	15	9
0979 - TELEVISION STUDIO PROD	19	11	10	10	4
2059 - BUSINESS ADMINISTRATION	20	20	26	21	26
2062 - PARALEGAL-LEGAL ASST	21	24	23	15	11
2084 - ACCOUNTING TECHNOLOGY	8	19	6	10	18
2221 - INDUSTRIAL MGMT TECH	1	4	2	1	1
2228 - OFFICE ADM-MED SYSTEMS	2	1	5	7	2
2229 - OFFICE ADMINISTRATION	7	5	6	9	14
2233 – BROADCAST TV PROD.				1	2
Total	281	217	159	285	107



Blank cells or missing years indicate no graduates.

Source: IR Program Assessment Data

Graduates by Race/Ethnicity



Source: IR Program Assessment Data

Graduation Rates (1 of 3)

Major	Fall Cohort Year	# in Cohort	150% Graduates	150% Graduation Rate	200% Graduates	200% Graduation Rate
0817- Sales- Entrepreneurship	2015	4	3	75%	3	75%
	2016	2	2	100%	2	100%
	2017 – 200% in progress	2	0	0%	0	0%
	2018 – In progress	3	1	33.3%	1	33.3%
0824 – Broadcast TV Prod.	2017 – 200% in progress	2	0	0%	0	0%
	2018 – In progress	2	0	0%	0	0%
0913- Business Operations- Entrepreneurship	2015	20	13	65%	13	65%
	2016	6	1	17%	1	17%
	2017 – 200% in progress	4	1	25%	1	25%
	2018 – In progress	7	2	28.6%	2	28.6%
0914- Office Management	2015	9	7	78%	7	78%
	2016	7	1	14.3%	1	14.3%
	2017 – 200% in progress	8	2	25%	4	50%
	2018 – In progress	4	0	0%	0	0%
0916- Business Management	2015	21	3	14%	4	19%
	2016	39	4	10%	4	10%
	2017 – 200% in progress	23	2	8.7%	2	8.7%
	2018 – In progress	32	6	18.8%	6	18.8%
0919- Office Management (Medical Option)	2015	10	1	10%	2	20%
	2016	16	0	0%	2	12.5%
	2017 – 200% in progress	1	0	0%	0	0%
0926- Office Support	2015	16	14	88%	14	88%
	2016	0				
	2017 – 200% in progress	1	1	100%	1	100%
	2018 – In progress	2	0	0%	0	0%

College average (150%- 58.3%, 200%- 66.1%)

Fall terms include prior Summer term enrollment in major.

Source: IR Program Assessment Data

Graduation Rates (2 of 3)

Major	Fall Cohort Year	# in Cohort	150% Graduates	150% Graduation Rate	200% Graduates	200% Graduation Rate
0935- Accounting Technology Operations- Tax Prep	2015	11	8	73%	8	73%
	2016	3	0	0%	0	0%
	2017 – 200% in progress	2	1	50%	1	50%
	2018 – In progress	1	0	0%	0	0%
0943- Accounting Applications/ Computerized	2015	7	2	29%	2	29%
	2016	15	2	13.3%	5	33.3%
	2017 – 200% in progress	9	2	22.2%	4	44.4%
	2018 – In progress	8	1	12.5%	1	12.5%
0979- Television Production	2015	10	6	60%	6	60%
	2016	0				
	2017 – 200% in progress	3	2	66.7%	2	66.7%
	2018 – In progress	1	1	100%	1	100%
2059- Business Administration	2013	88	11	13%	12	14%
	2014	140	9	6.4%	12	8.6%
	2015 – 200% in progress	106	10	9.4%	12	11.3%
	2016 – In progress	136	20	14.7	20	14.7%
2062- Paralegal Studies	2013	33	11	33%	12	36%
	2014	30	8	26.7%	10	33.3%
	2015 – 200% in progress	35	12	34.3%	15	42.9%
	2016 – In progress	39	8	20.5%	8	20.5%
2084- Accounting Technology	2013	25	5	20%	5	20%
	2014	31	8	25.8%	10	32.3%
	2015 – 200% in progress	26	6	23.1%	7	26.9%
	2016 – In progress	28	8	28.6%	8	28.6%

College average (150%- 58.3%, 200%- 66.1%)

Fall terms include prior Summer term enrollment in major.

Source: IR Program Assessment Data

Graduation Rates (3 of 3)

Major	Fall Cohort Year	# in Cohort	150% Graduates	150% Graduation Rate	200% Graduates	200% Graduation Rate
2221- Industrial Management	2013	2	1	50%	1	50%
	2014	6	1	16.7%	1	16.7%
	2015 – 200% in progress	1	0	0%	0	0%
	2016 – In progress	3	0	0%	0	0%
2228 - Office Administration- (Medical Systems Option)	2013	20	2	10%	3	15%
	2014	10	0	0%	1	10%
	2015 – 200% in progress	14	2	14.3%	3	21.4%
	2016 – In progress	6	3	50%	3	50%
2229- Office Administration (Gen, Leg, Med)	2014	21	4	19%	4	19%
	2015 – 200% in progress	14	4	28.6%	4	28.6%
	2016 – In progress	14	6	42.9%	6	42.9%

Source: IR Program Assessment Data

College average (150%- 58.3%, 200%- 66.1%)

Fall terms include prior Summer term enrollment in major.

Graduation Rates by Race/Ethnicity (1 of 6)

Major	Fall Cohort Year	Race/Ethnicity	# in Cohort	150% Graduates	150% Graduation Rate	200% Graduates	200% Graduation Rate
0817- Sales-Entrepreneurship	2015	Am. Ind	1	1	100%	1	100%
		Hispanic	1	0	0%	0	0%
		Two or More Races	1	1	100%	1	100%
		White	1	1	100%	1	100%
	2016	White	1	1	100%	1	100%
		Unknown	1	1	100%	1	100%
	2017 – 200% in progress	White	2	0	0%	0	0%
2018 – In progress	White	3	1	33.3%	1	33.3%	
0824 – Broadcast TV Prod.	2017 – 200% in progress	Black	1	0	0%	0	0%
		Hispanic	1	0	0%	0	0%
	2018 – In progress	Hispanic	1	0	0%	0	0%
		White	1	0	0%	0	0%
0913- Business Operations-Entrepreneurship	2015	Black	2	2	100%	2	100%
		Hispanic	1	1	100%	1	100%
		White	16	10	63%	10	63%
	2016	Black	1	0	0%	0	0%
		Hispanic	2	0	0%	0	0%
		Two or More Races	3	1	33%	1	33%
	2017 – 200% in progress	Hispanic	1	1	100%	1	100%
		Unknown	2	0	0%	0	0%
		White	1	0	0%	0	0%
2018 – In progress	Hispanic	4	0	0%	0	0%	
	White	3	2	66.7%	2	66.7%	
0914- Office Management	2015	Black	1	0	0%	0	0%
		Hispanic	1	1	100%	1	100%
		Two or More Races	1	1	100%	1	100%
		White	6	5	83%	5	83%
	2016	Black	1	0	0%	0	0%
		Hispanic	3	1	33%	1	33%
		Two or More Races	1	0	0%	0	0%
		White	2	0	0%	0	0%
	2017 – 200% in progress	Black	2	0	0%	1	50%
		Hispanic	1	1	100%	1	100%
		Two or More Races	1	0	0%	1	100%
		White	4	1	25%	1	25%
	2018 – In progress	Black	1	0	0%	0	0%
		Hispanic	2	0	0%	0	0%
Unknown		1	0	0%	0	0%	

Graduation Rates by Race/Ethnicity (2 of 6)

Major	Fall Cohort Year	Race /Ethnicity	# in Cohort	150% Graduates	150% Graduation Rate	200% Graduates	200% Graduation Rate
0916- Business Management	2015	Hispanic	3	0	0%	0	0%
		Two or More Races	2	0	0%	1	50%
		White	14	3	21%	3	21%
	2016	Asian	3	0	0%	0	0%
		Black	8	1	12.5%	1	12.5%
		Hispanic	3	1	33.3%	1	33.3%
		Two or More Races	3	0	0%	0	0%
		Unknown	1	0	0%	0	0%
		White	21	2	9.5%	2	9.5%
	2017 – 200% in progress	Asian	2	0	0%	0	0%
		Black	1	0	0%	0	0%
		Hispanic	5	0	0%	0	0%
		White	15	2	13.3%	2	13.3%
	2018 – In progress	Black	11	0	0%	0	0%
		Hispanic	2	0	0%	0	0%
Two or More Races		2	0	0%	0	0%	
White		17	6	35.3%	6	35.3%	
0919- Office Management (Medical Option)	2015	Black	1	0	0%	0	0%
		Hispanic	3	1	33%	1	33%
		Two or More Races	1	0	0%	0	0%
		White	4	0	0%	1	25%
	2016	Black	2	0	0%	0	0%
		Hispanic	3	0	0%	0	0%
		Two or More Races	1	0	0%	0	0%
		Unknown	1	0	0%	0	0%
2017 – 200% in progress	White	90	0	0%	2	20%	
2017 – 200% in progress	White	1	0	0%	0	0%	
0926- Office Support	2015	Black	2	1	50%	1	50%
		Hispanic	2	2	100%	2	100%
		White	12	11	92%	11	92%
	2017 – 200% in progress	Black	1	1	100%	1	100%
	2018 – In progress	Black	1	0	0%	0	0%
		White	1	0	0%	0	0%

Graduation Rates by Race/Ethnicity (3 of 6)

Major	Fall Cohort Year	Race/Ethnicity	# in Cohort	150% Graduates	150% Graduation Rate	200% Graduates	200% Graduation Rate
0935- Accounting Technology Operations- Tax Prep	2015	Black	1	1	100%	1	100%
		Hispanic	1	1	100%	1	100%
		White	9	6	67%	6	67%
	2016	Hispanic	1	0	0%	0	0%
		White	2	0	0%	0	0%
	2017 – 200% in progress	Hispanic	1	0	0%	0	0%
		White	1	1	100%	1	100%
	2018 – In progress	White	1	0	0%	0	0%
0943- Accounting Applications/ Computerized	2015	White	6	1	17%	1	17%
	2016	Black	1	0	0%	0	0%
		Hispanic	3	2	67%	3	100%
		Unknown	2	0	0%	0	0%
		White	9	0	0%	2	22%
	2017 – 200% in progress	Black	2	0	0%	0	0%
		Two or More Races	1	0	0%	0	0%
		White	6	2	33.3%	4	66.7%
	2018 – In progress	Hispanic	2	1	50%	1	50%
		White	6	0	0%	0	0%
0979- Television Production	2015	Black	1	0	0%	0	0%
		Hispanic	1	1	100%	1	100%
		White	8	5	63%	5	63%
	2017 – 200% in progress	Black	1	1	100%	1	100%
		Hispanic	1	1	100%	1	100%
		White	1	0	0%	0	0%
	2018 – In progress	White	1	1	100%	1	100%

Graduation Rates by Race/Ethnicity (4 of 6)

Major	Fall Cohort Year	Race/ Ethnicity	# in Cohort	150% Graduates	150% Graduation Rate	200% Graduates	200% Graduation Rate
2059- Business Administration	2013	Black	18	2	11%	2	11%
		Hawaii/Pac	1	0	0%	0	0%
		Hispanic	14	2	14%	2	14%
		White	54	7	13%	8	15%
	2014	Asian	2	1	50%	2	100%
		Black	33	1	3%	2	6.1%
		Hispanic	23	0	0%	1	4.3%
		Two or More Races	5	0	0%	0	0%
		Unknown	3	0	0%	0	0%
	2015 – 200% in progress	White	74	7	9.5%	7	9.5%
		Am. Ind	1	0	0%	0	0%
		Asian	3	0	0%	0	0%
		Black	14	1	7.1%	1	7.1%
		Hispanic	13	1	7.7%	1	7.7%
		Two or More Races	4	1	25%	1	25%
		Unknown	3	0	0%	0	0%
	2016 – In progress	White	68	7	10.3%	9	13.2%
		Asian	2	0	0%	0	0%
		Black	33	2	6.1%	2	6.1%
		Hispanic	19	1	5.3%	1	5.3%
Native Hawaiian/Pac		1	0	0%	0	0%	
Two or More Races		4	1	25%	1	25%	
2062- Paralegal Studies	2013	White	77	16	20.8%	16	20.8%
		Asian	1	0	0%	0	0%
		Black	2	0	0%	0	0%
		Hispanic	7	2	29%	2	29%
		Two or More Races	1	1	100%	1	100%
	2014	White	21	7	33%	8	38%
		Black	4	0	0%	0	0%
		Hispanic	3	0	0%	0	0%
	2015 – 200% in progress	White	23	8	34.8%	10	43.5%
		Black	4	2	50%	2	50%
		Hispanic	2	0	0%	0	0%
		Unknown	1	1	100%	1	100%
	2016 – In progress	White	28	9	32.1%	12	42.9%
		Black	6	3	50%	3	50%
		Hispanic	6	0	0%	0	0%
			White	27	5	18.5%	5

Graduation Rates by Race/Ethnicity (5 of 6)

Major	Fall Cohort Year	Race/ Ethnicity	# in Cohort	150% Graduates	150% Graduation Rate	200% Graduates	200% Graduation Rate
2084- Accounting Technology	2013	Black	4	1	25%	1	25%
		Hispanic	3	2	66%	2	66%
		White	18	2	11%	2	11%
	2014	Asian	2	2	100%	2	100%
		Black	3	1	33.3%	1	33.3%
		Hispanic	4	0	0%	0	0%
		Two or More Races	2	0	0%	0	0%
		Unknown	2	1	50%	1	50%
		White	18	4	21.1%	6	33.3%
	2015 – 200% in progress	Asian	1	0	0%	0	0%
		Black	3	1	33.3%	1	33.3%
		Hispanic	2	1	50%	1	50%
		Two or More Races	1	0	0%	0	0%
		White	19	4	21.1%	5	26.3%
	2016 – In progress	Black	5	2	40%	2	40%
		Hispanic	4	1	25%	1	25%
		Two or More Races	1	0	0%	0	0%
		Unknown	1	1	100%	1	100%
		White	17	4	23.5%	4	23.5%
	2221- Industrial Management	2013	White	2	1	50%	1
2014		Black	1	0	0%	0	0%
		Hispanic	1	0	0%	0	0%
		White	4	1	25%	1	25%
2015 – 200% in progress		White	1	0	0%	0	0%
2016 – In progress		Black	1	0	0%	0	0%
		White	2	0	0%	0	0%

College average (150%- 58.3%, 200%- 66.1%)

Fall terms include prior Summer term enrollment in major.

Graduation Rates by Race/Ethnicity (6 of 6)

Major	Fall Cohort Year	Race/ Ethnicity	# in Cohort	150% Graduates	150% Graduation Rate	200% Graduates	200% Graduation Rate
2228 - Office Administration- (Medical Systems Option)	2013	Am. Ind	1	0	0%	0	0%
		Black	4	0	0%	0	0%
		Hispanic	2	0	0%	0	0%
		White	13	2	15%	3	23%
	2014	Asian	1	0	0%	0	0%
		Black	1	0	0%	0	0%
		Hispanic	1	0	0%	0	0%
		Two or More Races	1	0	0%	0	0%
		White	6	0	0%	1	17%
	2015 – 200% in progress	Black	4	0	0%	0	0%
		Hispanic	1	0	0%	0	0%
		White	9	2	22.%	3	33.3%
	2016 – In progress	Black	1	0	0%	0	0%
		Hispanic	2	1	50%	1	50%
White		3	2	66.7%	2	66.7%	
2229- Office Administration (Gen, Leg, Med)	2014	Asian	1	0	0%	0	0%
		Black	6	1	16.7%	1	16.7%
		Hispanic	1	0	0%	0	0%
		White	13	3	23.1%	3	23.1%
	2015 – 200% in progress	Black	2	0	0%	0	0%
		Unknown	2	0	0%	0	0%
		White	10	4	40%	4	40%
	2016 – In progress	Black	3	1	33.3%	1	33.3%
		Unknown	1	0	0%	0	0%
			White	10	5	50%	5

College average (150%- 58.3%, 200%- 66.1%)

Fall terms include prior Summer term enrollment in major.

Source: IR Program Assessment Data

Graduation Rates by Gender (1 of 3)

Major	Fall Cohort Year	Gender	# in Cohort	150% Graduates	150% Graduation Rate	200% Graduates	200% Graduation Rate
0817- Sales- Entrepreneurship	2016	Female	2	2	100%	2	100%
	2017 – 200% in progress	Female	2	0	0%	0	0%
	2018 – In progress	Female	3	1	33.3%	1	33.3%
0824 – Broadcast TV Prod.	2017 – 200% in progress	Female	1	0	0%	0	0%
		Male	1	0	0%	0	0%
	2018 – In progress	Male	2	0	0%	0	0%
0913- Business Operations- Entrepreneurship	2016	Female	4	1	25%	1	25%
		Male	2	0	0%	0	0%
	2017 – 200% in progress	Female	3	1	33.3%	1	33.3%
		Male	1	0	0%	0	0%
	2018 – In progress	Female	5	2	40%	2	40%
		Male	2	0	0%	0	0%
0914- Office Management	2016	Female	7	1	14.3%	1	14.3%
	2017 – 200% in progress	Female	6	2	33.3%	4	66.7%
		Male	2	0	0%	0	0%
	2018 – In progress	Female	3	0	0%	0	0%
		Male	1	0	0%	0	0%
0916- Business Management	2016	Female	18	1	5.6%	1	5.6%
		Male	21	3	14.3%	3	14.3%
	2017 – 200% in progress	Female	10	1	10%	1	10%
		Male	13	1	7.7%	1	7.7%
	2018 – In progress	Female	19	4	21.1%	4	21.1%
		Male	12	2	16.7%	2	16.7%
Unknown	1	0	0%	0	0%		
0919- Office Management (Medical Option)	2016	Female	15	0	0%	2	13.3%
		Male	1	0	0%	0	0%
	2017 – 200% in progress	Male	1	0	0%	0	0%
0926- Office Support	2017 – 200% in progress	Male	1	1	100%	1	100%
	2018 – In progress	Female	2	0	0%	0	0%

College average (150%- 58.3%, 200%- 66.1%)

Fall terms include prior Summer term enrollment in major.

Source: IR Program Assessment Data

Graduation Rates by Gender (2 of 3)

Major	Fall Cohort Year	Gender	# in Cohort	150% Graduates	150% Graduation Rate	200% Graduates	200% Graduation Rate
0935- Accounting Technology Operations- Tax Prep	2016	Female	1	0	0%	0	0%
		Male	2	0	0%	0	0%
	2017 – 200% in progress	Female	2	1	50%	1	50%
	2018 – In progress	Female	1	0	0%	0	0%
0943- Accounting Applications/ Computerized	2016	Female	9	2	22.2%	3	33.3%
		Male	6	0	0%	2	33.3%
	2017 – 200% in progress	Female	6	2	33.3%	4	66.7%
		Male	2	0	0%	0	0%
		PrefNoAns	1	0	0%	0	0%
	2018 – In progress	Female	7	1	14.3%	1	14.3%
Male		1	0	0%	0	0%	
0979- Television Production	2017 – 200% in progress	Female	1	0	0%	0	0%
		Male	2	2	100%	2	100%
	2018 – In progress	Female	1	1	100%	1	100%
2059- Business Administration	2014	Female	66	6	9.1%	8	12.1%
		Male	73	3	4.1%	4	5.5%
		Unknown	1	0	0%	0	0%
	2015 – 200% in progress	Female	54	4	7.4%	6	11.1%
		Male	50	6	12%	6	12%
		Unknown	2	0	0%	0	0%
	2016 – In progress	Female	68	13	19.1%	13	19.1%
		Male	66	7	10.6%	7	10.6%
Unknown		2	0	0%	0	0%	
2062- Paralegal Studies	2014	Female	25	7	28%	9	36%
		Male	5	1	20%	1	20%
	2015 – 200% in progress	Female	30	9	30%	12	40%
		Male	4	2	50%	2	50%
		Unknown	1	1	100%	1	100%
	2016 – In progress	Female	34	8	23.5%	8	23.5%
		Male	4	0	0%	0	0%
Unknown		1	0	0%	0	0%	

College average (150%- 58.3%, 200%- 66.1%)

Source: IR Program Assessment Data

Fall terms include prior Summer term enrollment in major.

Graduation Rates by Gender (3 of 3)

Major	Fall Cohort Year	Gender	# in Cohort	150% Graduates	150% Graduation Rate	200% Graduates	200% Graduation Rate
2084- Accounting Technology	2014	Female	23	7	30.4%	9	39.1%
		Male	7	1	14.3%	1	14.3%
		PrefNoAns	1	0	0%	0	0%
	2015 – 200% in progress	Female	22	6	27.3%	7	31.8%
		Male	4	0	0%	0	0%
	2016 – In progress	Female	18	6	33.3%	6	33.3%
		Male	10	2	20%	2	20%
2221- Industrial Management	2014	Female	1	0	0%	0	0%
		Male	5	1	20%	1	20%
	2015 – 200% in progress	Male	1	0	0%	0	0%
	2016 – In progress	Male	3	0	0%	0	0%
2228 - Office Administration- (Medical Systems Option)	2014	Female	10	0	0%	1	10%
	2015 – 200% in progress	Female	14	2	14.3%	3	21.4%
	2016 – In progress	Female	6	3	50%	3	50%
2229- Office Administration (Gen, Leg, Med)	2014	Female	21	4	19%	4	19%
	2015 – 200% in progress	Female	14	4	28.6%	4	28.6%
	2016 – In progress	Female	10	5	50%	5	50%
		Male	2	0	0%	0	0%
		PrefNoAns	1	0	0%	0	0%
		Unknown	1	1	100%	1	100%

Persistence Rates

Program and Cohort Year		Registered	Exclusions	Adjusted Cohort	Persistence by DSC		Persistence by Program		DSC Total Persistence
					N	%	N	%	
0817 MARKETING, SALES, SER ENT	FA16 to SP17	3	0	3	0	0%	3	100%	100%
	FA17 to SP18	2	0	2	1	50%	0	0%	50%
	FA18 to SP19	2	0	2	0	0%	1	50%	50%
0824 BROADCAST TV PROD	FA18 to SP19	5	0	5	0	0%	4	80%	80%
0913 BUSINESS OPER/ENTREPREN.	FA16 to SP17	8	1	7	1	14%	3	43%	57%
	FA17 to SP18	4	0	4	0	0%	2	50%	50%
	FA18 to SP19	6	1	5	1	20%	2	40%	60%
0914 OFFICE MANAGEMENT	FA16 to SP17	5	0	5	0	0%	3	60%	60%
	FA17 to SP18	8	0	8	0	0%	6	75%	75%
	FA18 to SP19	6	1	5	0	0%	4	80%	80%
0916 BUSINESS MANAGEMENT	FA16 to SP17	47	4	43	9	21%	13	30%	51%
	FA17 to SP18	30	1	29	2	7%	17	59%	66%
	FA18 to SP19	38	5	33	6	18%	15	45%	64%
0919 OFFICE MGMT-MEDICAL	FA16 to SP17	19	0	19	2	11%	11	58%	59%
	FA17 to SP18	6	0	6	2	33%	3	50%	83%
	FA18 to SP19	1	0	1	0	0%	0	0%	0%
0926 - OFFICE SUPPORT TECH.	FA17 to SP18	1	0	1	0	0%	1	100%	100%
	FA18 to SP19	1	0	1	0	0%	0	0%	0%
0935 – ACCOUNTING TECH - TAX	FA16 to SP17	9	1	8	2	25%	3	38%	63%
	FA17 to SP18	2	0	2	1	50%	1	50%	100%
	FA18 to SP19	1	0	1	0	0%	0	0%	0%
0943 – ACCOUNTING APPLICATIONS	FA16 to SP17	19	0	19	1	5%	12	63%	68%
	FA17 to SP18	14	1	13	1	8%	7	54%	62%
	FA18 to SP19	17	3	14	0	0%	6	43%	43%
0979 – TV STUDIO PROD.	FA16 to SP17	6	4	2	0	0%	1	50%	50%
	FA17 to SP18	3	0	3	1	33%	2	67%	100%
	FA18 to SP19	3	1	2	0	0%	2	100%	100%

Persistence Rates By Race/Ethnicity (1 of 2)

Program and Cohort Year		Race/ Ethnicity	Registered	Exclusions	Adjusted Cohort	Persistence by DSC		Persistence by Program		DSC Total Persistence
						N	%	N	%	
0817 MARKETING, SALES, SER ENT	FA16 to SP17	Hispanic	1	0	1	0	0%	1	100%	100%
		White	1	0	1	0	0%	1	100%	100%
	FA17 to SP18	White	2	0	2	1	50%	0	0%	50%
	FA18 to SP19	White	2	0	2	0	0%	1	50%	50%
0824 BROADCAST TV PROD	FA18 to SP19	Hispanic	2	0	2	0	0%	2	100%	100%
		White	3	0	3	0	0%	2	67%	67%
0913 BUSINESS OPER/ENTREPREN.	FA16 to SP17	Hispanic	2	0	2	0	0%	1	50%	50%
		Two or More Races	2	1	1	0	0%	1	100%	100%
		White	3	0	3	1	33%	1	33%	67%
	FA17 to SP18	Hispanic	1	0	1	0	0%	1	100%	100%
		White	1	0	1	0	0%	1	100%	100%
	FA18 to SP19	Hispanic	3	1	2	1	50%	1	50%	100%
White		3	0	3	0	0%	1	33%	33%	
0914 OFFICE MANAGEMENT	FA16 to SP17	Hispanic	2	0	2	0	0%	1	50%	50%
		White	3	0	3	0	0%	2	67%	67%
	FA17 to SP18	Black	2	0	2	0	0%	2	100%	100%
		Hispanic	1	0	1	0	0%	1	100%	100%
		Two or More Races	1	0	1	0	0%	1	100%	100%
		White	4	0	4	0	0%	2	50%	50%
	FA18 to SP19	Black	1	0	1	0	0%	1	100%	100%
		Hispanic	1	1	0	0	0%	0	0%	0%
Two or More Races		1	0	1	0	0%	0	0%	0%	
White		3	0	3	0	0%	3	100%	100%	
0916 BUSINESS MANAGEMENT	FA16 to SP17	Asian	2	0	2	0	0%	2	100%	100%
		Black	10	0	10	3	30%	2	20%	50%
		Hispanic	5	2	3	0	0%	1	33%	33%
		White	28	2	26	5	19%	8	31%	50%
	FA17 to SP18	Asian	1	0	1	0	0%	0	0%	0%
		Black	4	0	4	1	25%	2	50%	75%
		Hispanic	5	0	5	1	20%	3	60%	80%
		White	20	1	19	0	0%	12	63%	63%
	Fa18 to SP19	Black	9	0	9	3	33%	2	22%	56%
		Hispanic	5	0	5	2	40%	3	60%	100%
		Two or More Races	2	0	2	0	0%	1	50%	50%
		White	22	5	17	1	6%	9	53%	59%

Persistence Rates By Race/Ethnicity (2 of 2)

Program and Cohort Year		Race/ Ethnicity	Registered	Exclusions	Adjusted Cohort	Persistence by DSC		Persistence by Program		DSC Total Persistence
						N	%	N	%	
0919 OFFICE MGMT-MEDICAL	FA16 to SP17	Black	3	0	3	0	0%	1	33%	33%
		Hispanic	1	0	1	1	100%	0	0%	100%
		Two or More Races	1	0	1	0	0%	0	0%	0%
		White	13	0	13	1	8%	9	69%	77%
	FA17 to SP18	Hispanic	1	0	1	0	0%	0	0%	0%
		White	5	0	5	2	40%	3	60%	100%
		White	1	0	1	0	0%	0	0%	0%
0926 - OFFICE SUPPORT TECH.	FA17 to SP18	Black	1	0	1	0	0%	1	100%	100%
	FA18 to SP19	White	1	0	1	0	0%	0	0%	0%
0935 – ACCOUNTING TECH - TAX	FA16 to SP17	Black	1	0	1	0	0%	1	100%	100%
		Hispanic	3	1	2	1	50%	0	0%	50%
		White	5	0	5	1	20%	2	40%	60%
	FA17 to SP18	White	2	0	2	1	50%	1	50%	100%
	FA18 to SP19	White	1	0	1	0	0%	0	0%	0%
0943 – ACCOUNTING APPLICATIONS	FA16 to SP17	Hispanic	3	0	3	1	33%	2	67%	100%
		White	14	0	14	0	0%	9	64%	64%
	FA17 to SP18	Black	2	0	2	0	0%	1	50%	50%
		Hispanic	1	0	1	0	0%	1	100%	100%
		Two or More Races	1	0	1	0	0%	1	100%	100%
		White	9	1	8	1	13%	4	50%	63%
	FA18 to SP19	Black	2	0	2	0	0%	1	50%	50%
		Hispanic	2	1	1	0	0%	0	0%	0%
White		13	2	11	0	0%	5	45%	45%	
0979 – TV STUDIO PROD.	FA16 to SP17	Black	1	0	1	0	0%	0	0%	0%
		White	5	4	1	0	0%	1	100%	100%
	FA17 to SP18	Black	1	0	1	0	0%	1	100%	100%
		White	2	0	2	1	50%	1	50%	100%
	FA18 to SP19	Black	1	0	1	0	0%	0	0%	0%
		White	2	0	2	0	0%	2	100%	100%

Persistence Rates By Gender

Program and Cohort Year		Gender	Registered	Exclusions	Adjusted Cohort	Persistence by DSC		Persistence by Program		DSC Total Persistence
						N	%	N	%	
0817 MARKETING, SALES, SER ENT	FA18 to SP19	Female	2	0	2	0	0%	1	50%	50%
0824 BROADCAST TV PROD	FA18 to SP19	Male	5	0	5	0	0%	4	80%	80%
0913 BUSINESS OPER/ENTREPREN.	FA18 to SP19	Female	3	1	2	0	0%	2	100%	100%
		Male	3	0	3	1	33.3%	0	0%	33.3%
0914 OFFICE MANAGEMENT	FA18 to SP19	Female	6	1	5	0	0%	4	80%	80%
0916 BUSINESS MANAGEMENT	FA18 to SP19	Female	19	2	17	2	12%	8	47%	59%
		Male	19	3	16	4	25%	7	44%	69%
0919 OFFICE MGMT-MEDICAL	FA18 to SP19	Female	1	0	1	0	0%	0	0%	0%
0935 – ACCOUNTING TECH - TAX	FA18 to SP19	Female	1	0	1	0	0%	0	0%	0%
0943 – ACCOUNTING APPLICATIONS	FA18 to SP19	Female	15	3	12	0	0%	6	50%	50%
		Male	2	0	2	0	0%	0	0%	0%
0979 – TV STUDIO PROD.	FA18 to SP19	Female	1	0	1	0	0%	1	100%	100%
		Male	2	1	1	0	0%	1	100%	100%

Retention Rates (1 of 2)

Program and Cohort Year		Registered	Exclusions	Adjusted Cohort	Retained by DSC		Retained by Program		DSC Total Retained
					N	%	N	%	
2059 BUSINESS ADMINISTRATION	2013	193	13	180	30	17%	60	33%	50%
	2014	242	17	225	22	10%	68	31%	41%
	2015	205	4	201	4	2%	86	43%	45%
	2016	224	25	199	13	7%	77	39%	45%
	2017	212	19	193	15	7.8%	74	38.3%	46.1%
2062 PARALEGAL-LEGAL ASST	2013	103	12	91	8	9%	54	59%	68%
	2014	105	20	85	10	11.8%	39	46%	57.7%
	2015	109	20	89	7	8%	50	56%	64%
	2016	93	19	74	4	5%	39	53%	58%
	2017	64	16	48	3	6.3%	25	52.1%	58.3%
2084 ACCOUNTING TECHNOLOGY	2013	73	15	58	7	12%	23	40%	52%
	2014	71	12	59	9	21.4%	29	44%	65.7%
	2015	58	5	53	4	8%	26	49%	57%
	2016	60	5	55	1	2%	33	60%	62%
	2017	67	13	54	3	5.6%	30	55.6%	61.1%

College average (67.1%)

Registered - Includes all students enrolled in the fall term of the specified year, with the specified program as their primary major.

Exclusions - Includes students who are deceased or graduated fall of the specified year or the following spring or summer.

Not retained - Students who were not registered the following fall term.

Retained by DSC - Students who were still registered at DSC the following fall but with a different primary major.

Retained by Program - Students who were registered the following fall with the same primary major.

Source: IR Program Assessment Data

Retention Rates (2 of 2)

Program and Cohort Year		Registered	Exclusions	Adjusted Cohort	Retained by DSC		Retained by Program		DSC Total Retained
					N	%	N	%	
2221 INDUSTRIAL MGMT TECH	2013	7	3	4	0	0%	2	50%	50%
	2014	9	0	9	0	0%	4	44%	44%
	2015	8	1	7	1	14%	5	71%	85%
	2016	7	2	5	0	0%	2	40%	40%
	2017	5	0	5	0	0%	4	80%	80%
2228 OFFICE ADM-MED SYSTEMS	2013	30	0	30	3	10%	8	27%	37%
	2014	26	2	24	3	16%	12	48%	64%
	2015	21	0	21	1	5%	10	48%	53%
	2016	27	6	21	1	5%	9	43%	48%
	2017	13	6	7	1	14.3%	2	28.6%	42.9%
2229 OFFICE ADMINISTRATION	2013	51	6	45	5	11%	27	60%	71%
	2014	53	8	45	5	12.5%	18	42%	54%
	2015	33	2	31	2	6%	18	58%	64%
	2016	40	4	36	0	0%	22	61%	61%
	2017	52	11	41	2	4.9%	28	68.3%	73.2%
2233 BROADCAST TV PROD.	2016	2	0	2	0	0%	2	100%	100%
	2017	14	0	14	0	0%	8	57.1%	57.1%

College average (67.1%)

Registered - Includes all students enrolled in the fall term of the specified year, with the specified program as their primary major.

Exclusions - Includes students who are deceased or graduated fall of the specified year or the following spring or summer.

Not retained - Students who were not registered the following fall term.

Retained by DSC - Students who were still registered at DSC the following fall but with a different primary major.

Retained by Program - Students who were registered the following fall with the same primary major.

Source: IR Program Assessment Data

Fall 2017 to Fall 2018 Retention Rates by Race/Ethnicity (1 of 2)

Major	Fall Term	Registered	Exclusions	Adjusted Cohort	Retained by Program	
					N	%
2059 BUSINESS ADMINISTRATION	Asian	4	0	4*	2	50.0%
	Black	47	3	44*	14	31.8%
	Hispanic	32	3	29***	9	31.0%
	Two or More Races	4	0	4	2	50.0%
	Unknown	1	0	1	0	0.0%
	White	124	13	121****	47	42.3%
2062 PARALEGAL-LEGAL ASST	Am. Ind.	1	0	1	1	100.0%
	Black	9	3	6	2	33.3%
	Hispanic	8	1	7*	4	57.1%
	Two or More Races	2	0	2	1	50.0%
	Unknown	1	1	0		
	White	43	11	32**	17	53.1%
2084 ACCOUNTING TECHNOLOGY	Asian	2	0	2	2	100.0%
	Black	6	0	6	4	66.7%
	Hispanic	11	2	9**	4	44.4%
	Two or More Races	1	0	1	1	100.0%
	Unknown	3	2	1	0	0.0%
	White	44	9	35*	19	54.3%

one student retained by DSC, **two students retained by DSC, *three students retained by DSC, ****ten students retained by DSC*

College average (African American: 49.9%, Hispanic: 66.3%)

Registered - Includes all students enrolled in the fall term of the specified year, with the specified program as their primary major.

Exclusions - Includes students who are deceased or graduated fall of the specified year or the following spring or summer.

Adjusted Cohort - Registered students less exclusions.

Not retained - Students who were not registered the following fall term.

Retained by DSC - Students who were still registered at DSC the following fall but with a different primary major.

Retained by Program - Students who were registered the following fall with the same primary major.

Source: IR Program Assessment Data

Fall 2017 to Fall 2018 Retention Rates by Race/Ethnicity (2 of 2)

Major	Fall Term	Registered	Exclusions	Adjusted Cohort	Retained by Program	
					N	%
2221 INDUSTRIAL MGMT TECH	Black	2	0	2	1	50.0%
	Hispanic	1	0	1	1	100.0%
	White	2	0	2	2	100.0%
2228 OFFICE ADM- MED SYSTEMS	Black	1	0	1	0	0.0%
	Hispanic	3	2	1*	0	0.0%
	White	9	4	5	2	40.0%
2229 OFFICE ADMINISTRATION	Black	7	2	5*	2	40.0%
	Hispanic	9	2	7	2	28.6%
	Two or More Races	1	0	1	1	100.0%
	Unknown	1	0	1	1	100.0%
	White	34	7	27*	22	81.5%
2233 BROADCAST TV PROD.	Black	3	0	3	1	33.3%
	Hispanic	4	0	4	2	50.0%
	Two or More Races	1	0	1	0	0.0%
	White	6	0	6	5	83.3%

**one student retained by DSC*

College average (African American: 49.9%, Hispanic: 66.3%)

Registered - Includes all students enrolled in the fall term of the specified year, with the specified program as their primary major.

Exclusions - Includes students who are deceased or graduated fall of the specified year or the following spring or summer.

Adjusted Cohort - Registered students less exclusions.

Not retained - Students who were not registered the following fall term.

Retained by DSC - Students who were still registered at DSC the following fall but with a different primary major.

Retained by Program - Students who were registered the following fall with the same primary major.

Source: IR Program Assessment Data

Retention Rates by Gender FA17 to FA18

Major	Fall Term	Registered	Exclusions	Adjusted Cohort	Retained by Program	
					N	%
2059 BUSINESS ADMINISTRATION	Female	115	9	104*	45	42.5%
	Male	95	10	85*	29	34.1%
	Unknown	2	0	2	0	0.0%
2062 PARALEGAL-LEGAL ASST	Female	60	16	44*	23	52.3%
	Male	4	0	4	2	50.0%
2084 ACCOUNTING TECHNOLOGY	Female	55	11	44*	24	54.5%
	Male	12	2	10	6	60.0%
2221 INDUSTRIAL MGMT TECH	Female	1	0	1	1	100.0%
	Male	4	0	4	3	75.0%
2228 OFFICE ADM-MED SYSTEMS	Female	11	6	5*	2	40.0%
	Male	1	0	1	0	0.0%
	Unknown	1	0	1	0	0.0%
2229 OFFICE ADMINISTRATION	Female	48	11	37*	24	64.9%
	Male	3	0	3	3	100.0%
	Unknown	1	0	1	1	100.0%
2233 BROADCAST TV PROD.	Female	6	0	6	4	66.7%
	Male	8	0	8	4	50.0%

**some students retained by DSC*

Placement Rates (College average: 95.5%)

Program Title	Major	2013/14		2014/15		2015/16		2016/17		Average Annual Salary
		DSC%	FCS%	DSC%	FCS%	DSC%	FCS%	DSC%	FCS%	
MARKETING, SALES, SERVICE	0817	100%	89%	100%	97%	100%	93%	100%	94%	\$**,***
BUSINESS OPER/ENTREPRENEURSHIP	0913	100%	100%	100%	100%	100%	100%	100%	100%	\$44,020
OFFICE MANAGEMENT	0914	100%	97%	100%	97%	100%	98%	100%	97%	\$**,***
BUSINESS MANAGEMENT	0916	100%	100%	100%	99%	100%	99%	100%	99%	\$49,912
OFFICE MGMT-MEDICAL	0919	100%	97%	100%	97%	100%	99%	100%	97%	\$**,***
OFFICE SUPPORT-TECH. CENTER	0926	100%	98%	100%	98%	100%	98%	100%	98%	\$**,***
ACCOUNTING OPER-TAX PREP	0935	77%	82%	86%	82%	***%	82%	100%	86%	\$**,***
ACCOUNTING TECH MGMT	0943	72%	68%	N/A	72%	N/A	N/A	100%	83%	\$**,***
TELEVISION STUDIO PROD	0979	90%	87%	82%	76%	100%	94%	88%	85%	\$**,***
BUSINESS ADMINISTRATION	2059	100%	95%	88%	95%	94%	95%	95%	94%	\$43,224
PARALEGAL-LEGAL ASST	2062	56%	79%	72%	78%	82%	82%	82%	80%	\$**,***
ACCOUNTING TECHNOLOGY	2084	77%	62%	50%	61%	***%	70%	33%	77%	\$**,***
INDUSTRIAL MGMT TECH	2221	100%	97%	100%	84%	100%	98%	100%	70%	\$**,***
OFFICE ADM-MED SYSTEMS	2228	100%	97%	100%	99%	100%	97%	100%	97%	\$**,***
OFFICE ADMINISTRATION	2229	100%	97%	100%	99%	100%	97%	100%	97%	\$**,***

Source: Florida Education Training Placement Information Program (FETPIP)

*Currently Inactive Program

N/A - No placement data for the program

(***), (\$**,***), or (***%) - Number of graduates less than 10 but greater than 0 suppressed.

■ Indicates the College average above the State Averages
■ Indicates the College average same as the State Averages
■ Indicates the College average below the State Averages

Course Success Rates (1 of 3)

Major	Course	2015-2016		2016-2017		2017-2018		2018-2019	
		Attempted	% Successful	Attempted	% Successful	Attempted	% Successful	Attempted	% Successful
0979 TELEVISION STUDIO PROD	RTV1000C	21	90%	29	86%	28	89%	38	89%
	RVT1510C	21	100%	15	93%	18	100%	24	88%
	RVT1670			7	100%	4	100%	13	100%
	RVT2241			5	100%	6	67%	8	88%
	RTV2290					7	86%	3	100%
	RTV2534					5	100%	5	100%
	RTV2540					6	100%	5	100%
	RVT2541C	15	67%	13	92%	14	100%	13	92%
	RTV2600C	9	89%	22	91%	12	75%	7	100%
	RTV2940					4	100%	3	100%
	Major	66	88%	91	91%	104	91%	119	92%
2059 BUSINESS ADMINISTRAT ION	ECO2013	901	77%	922	76%	917	76%	947	78%
	ECO2023	680	84%	712	77%	708	80%	565	83%
	GEB1011	339	74%	377	75%	363	79%	419	76%
	GEB2351	126	70%	297	77%	326	81%	349	78%
	GEB2430	710	82%	540	73%	448	71%	430	70%
	ISM2000	340	78%	427	70%	410	77%	396	71%
	MAN2021	180	82%	168	81%	184	85%	185	91%
	MAR2011	149	74%	130	78%	114	77%	140	86%
	MAR2101	118	85%	164	76%	162	82%	190	85%
	MAR2321	75	84%	67	75%	103	81%	87	80%
	MAR2720			2	100%	3	67%		
	MKA2021	1	100%			22	82%	21	86%
	MNA2161	43	84%	71	86%	77	95%	88	93%
	MNA2345	67	91%	56	91%	73	86%	62	89%
	MNA2949			1	100%				
	SBM2000	123	89%	154	82%	151	82%	162	83%
	Major	3,852	80%	4,088	76%	4,061	78%	4,041	79%

■ Indicates a success rate of 90% or higher
■ Indicates a success rate between 70% and 89%
■ Indicates a success rate below 70%

Course Success Rates (2 of 3)

Major	Course	2015-2016		2016-2017		2017-2018		2018-2019	
		Attempted	% Successful	Attempted	% Successful	Attempted	% Successful	Attempted	% Successful
2062 PARALEGAL- LEGAL ASST	BUL2241	246	82%	248	76%	259	78%	242	80%
	BUL2242	46	87%	50	80%	39	87%	38	89%
	OST1141	123	85%	144	88%	148	83%	100	84%
	OST1435	70	83%	57	82%	55	91%	60	75%
	PLA1003	63	83%	57	68%	47	77%	49	73%
	PLA1103	44	89%	16	88%	18	83%	21	71%
	PLA1610	27	93%	31	81%	21	86%	17	88%
	PLA1800	24	96%	25	92%	26	85%	14	79%
	PLA2114	20	100%	15	93%	15	100%	12	92%
	PLA2200	29	93%	28	93%	18	83%	19	89%
	PLA2303	23	87%	44	91%	26	92%	21	76%
	PLA2460	32	91%	27	96%	20	75%	24	88%
	PLA2600	18	100%	23	91%	24	88%	12	92%
	PLA2763	31	87%	21	90%	30	80%	17	88%
	PLA2880	82	79%	66	71%	52	81%	18	83%
PLA2949	2	100%	5	100%	1	100%			
	Major	880	85%	857	82%	860	83%	664	81%
2084 ACCOUNTING TECHNOLOGY	ACG2021	488	65%	538	62%	668	66%	618	68%
	ACG2071	255	77%	267	73%	342	81%	381	85%
	APA1111	66	70%	72	71%	60	82%	56	84%
	APA1121	36	69%	36	92%	26	73%	45	87%
	APA1711	84	76%	67	85%	70	76%	67	91%
	FIN1100	185	79%	186	74%	180	72%	181	83%
	FIN2000	124	68%	71	61%	70	69%	80	78%
	TAX2000	43	72%	44	73%	52	81%	58	86%
	Major	1,281	71%	1,281	69%	1,468	72%	1,486	78%

■ Indicates a success rate of 90% or higher
■ Indicates a success rate between 70% and 89%
■ Indicates a success rate below 70%

Source: IR Program Assessment Data

Course Success Rates (3 of 3)

Major	Course	2015-2016		2016-2017		2017-2018		2018-2019	
		Attempted	% Successful	Attempted	% Successful	Attempted	% Successful	Attempted	% Successful
2228 OFFICE ADM- MED SYSTEMS	OST2461	17	88%	18	89%	20	95%	9	100%
	Major	17	88%	18	89%	20	95%	9	100%
2229 OFFICE ADMINISTRATION	OST1100	46	89%	59	73%	37	86%	42	79%
	OST1110	25	100%	26	92%	24	96%	21	81%
	OST1330	61	93%	50	80%	32	91%	26	88%
	OST1711	14	86%						
	OST1760	1	100%						
	OST2336	32	84%	34	91%	23	96%	22	73%
	OST2401	56	88%	70	84%	52	96%	43	91%
	OST2431	29	83%	34	91%	28	100%	17	100%
	OST2501	36	97%	35	94%	28	93%	21	76%
	OST2713	19	100%	15	100%	16	94%	21	100%
	OST2828	37	86%	19	89%	16	100%	7	86%
	OST2852	21	81%	22	91%	16	94%		
	QMB1001	98	76%	104	70%	77	73%	68	74%
Major	475	87%	468	82%	288	89%	288	83%	
Total	6,637	80%	6,803	76%	6,801	78%	6,607	79%	

■ Indicates a success rate of 90% or higher
■ Indicates a success rate between 70% and 89%
■ Indicates a success rate below 70%

Source: IR Program Assessment Data

Course Success Rates by IM, Campus and Race/Ethnicity (1 of 7)

Program, Course & Race/Ethnicity	2018-2019	
	Attempted	% Successful
0979 - Television Studio Prod	119	92%
RTV1000C	38	89%
Black	4	100%
Hispanic/Latino	9	89%
Two or More Races	2	100%
Unknown	1	0%
White	22	91%
RTV1510C	24	88%
Black	3	100%
Hispanic/Latino	4	75%
White	17	88%
RTV1670	13	100%
Black	2	100%
Hispanic/Latino	3	100%
Two or More Races	1	100%
White	7	100%
RTV2241	8	88%
Black	3	67%
Hispanic/Latino	2	100%
White	3	100%
RTV2290	3	100%
Black	1	100%
Hispanic/Latino	1	100%
White	1	100%
RTV2534	5	100%
Black	1	100%
Hispanic/Latino	1	100%
White	3	100%
RTV2540	5	100%
Black	1	100%
Hispanic/Latino	1	100%
White	3	100%

Program, Course & Race/Ethnicity	2018-2019	
	Attempted	% Successful
0979 - Television Studio Prod	119	92%
RTV2541C	13	92%
Black	3	100%
Hispanic/Latino	1	100%
White	9	89%
RTV2600C	7	100%
Black	3	100%
Hispanic/Latino	1	100%
White	3	100%
RTV2940	3	100%
Black	1	100%
Two or More Races	1	100%
White	1	100%
2059 - Business Administration	4041	79%
ECO2013	947	78%
American Indian/Alas	1	100%
Asian	30	87%
Black	95	63%
Hispanic/Latino	154	75%
Native Hawaiian/Paci	1	100%
Two or More Races	43	77%
Unknown	18	94%
White	605	81%
ECO2023	565	83%
Asian	10	90%
Black	76	71%
Hispanic/Latino	82	82%
Native Hawaiian/Paci	1	100%
Two or More Races	17	94%
Unknown	10	80%
White	369	85%

Course Success Rates by IM, Campus and Race/Ethnicity (2 of 7)

Program, Course & Race/Ethnicity	2018-2019	
	Attempted	% Successful
2059 - Business Administration	4041	79%
GEB1011	419	76%
American Indian/Alas	1	100%
Asian	5	40%
Black	63	60%
Hispanic/Latino	84	75%
Native Hawaiian/Paci	2	0%
Two or More Races	17	59%
Unknown	9	78%
White	238	84%
GEB2351	349	78%
American Indian/Alas	1	0%
Asian	11	73%
Black	55	76%
Hispanic/Latino	57	67%
Two or More Races	16	56%
Unknown	9	78%
White	200	84%
GEB2430	430	70%
Asian	8	75%
Black	77	58%
Hispanic/Latino	66	71%
Native Hawaiian/Paci	1	100%
Two or More Races	25	68%
Unknown	12	42%
White	241	74%

Program, Course & Race/Ethnicity	2018-2019	
	Attempted	% Successful
2059 - Business Administration	4041	79%
ISM2000	396	71%
Asian	6	50%
Black	64	59%
Hispanic/Latino	57	63%
Native Hawaiian/Paci	4	50%
Two or More Races	14	64%
Unknown	10	80%
White	241	78%
MAN2021	185	91%
Asian	3	100%
Black	20	75%
Hispanic/Latino	25	88%
Native Hawaiian/Paci	1	100%
Two or More Races	3	67%
Unknown	4	100%
White	129	95%
MAR2011	140	86%
Asian	3	100%
Black	20	85%
Hispanic/Latino	15	80%
Two or More Races	4	100%
Unknown	2	100%
White	96	85%
MAR2101	190	85%
American Indian/Alas	1	0%
Asian	2	100%
Black	29	66%
Hispanic/Latino	22	86%
Two or More Races	10	90%
Unknown	3	100%
White	123	89%

Course Success Rates by IM, Campus and Race/Ethnicity (3 of 7)

Program, Course & Race/Ethnicity	2018-2019	
	Attempted	% Successful
2059 - Business Administration	4041	79%
MAR2321	87	80%
Asian	2	50%
Black	6	83%
Hispanic/Latino	15	67%
Two or More Races	3	67%
Unknown	2	50%
White	59	86%
MKA2021	21	86%
Asian	1	100%
Black	4	25%
Hispanic/Latino	3	100%
Unknown	1	100%
White	12	100%
MNA2161	88	93%
Black	14	86%
Hispanic/Latino	9	100%
Two or More Races	2	100%
Unknown	1	100%
White	62	94%
MNA2345	62	89%
Asian	1	100%
Black	11	82%
Hispanic/Latino	4	75%
Native Hawaiian/Paci	1	100%
Two or More Races	1	100%
Unknown	1	100%
White	43	91%

Program, Course & Race/Ethnicity	2018-2019	
	Attempted	% Successful
2059 - Business Administration	4041	79%
SBM2000	162	83%
American Indian/Alas	1	0%
Asian	1	100%
Black	30	60%
Hispanic/Latino	22	91%
Native Hawaiian/Paci	1	100%
Two or More Races	8	75%
Unknown	4	75%
White	95	91%
2062 - Paralegal-Legal Asst	664	81%
BUL2241	242	80%
Asian	5	80%
Black	32	66%
Hispanic/Latino	36	81%
Native Hawaiian/Paci	2	50%
Two or More Races	10	70%
Unknown	2	50%
White	155	85%
BUL2242	38	89%
Asian	2	100%
Black	3	100%
Hispanic/Latino	4	100%
Two or More Races	2	100%
Unknown	1	100%
White	26	85%
OST1141	100	84%
Asian	3	100%
Black	13	77%
Hispanic/Latino	19	74%
Two or More Races	6	100%
White	59	86%

■ Indicates a success rate of 90% or higher
■ Indicates a success rate between 70% and 89%
■ Indicates a success rate below 70%

Source: IR Program Assessment Data

Course Success Rates by IM, Campus and Race/Ethnicity (4 of 7)

Program, Course & Race/Ethnicity	2018-2019	
	Attempted	% Successful
2062 - Paralegal-Legal Asst	664	81%
OST1435	60	75%
Black	10	50%
Hispanic/Latino	10	50%
Two or More Races	2	100%
Unknown	1	100%
White	37	86%
PLA1003	49	73%
Black	6	67%
Hispanic/Latino	10	50%
Native Hawaiian/Paci	1	100%
Two or More Races	2	100%
Unknown	1	100%
White	29	79%
PLA1103	21	71%
American Indian/Alas	1	100%
Black	1	100%
Hispanic/Latino	8	75%
Two or More Races	1	100%
White	10	60%
PLA1610	17	88%
American Indian/Alas	1	100%
Black	2	100%
Hispanic/Latino	2	100%
White	12	83%
PLA1800	14	79%
American Indian/Alas	1	100%
Black	1	100%
Hispanic/Latino	6	83%
White	6	67%

Program, Course & Race/Ethnicity	2018-2019	
	Attempted	% Successful
2062 - Paralegal-Legal Asst	664	81%
PLA2114	12	92%
Black	1	100%
Hispanic/Latino	2	100%
White	9	89%
PLA2200	19	89%
American Indian/Alas	1	100%
Black	1	100%
Hispanic/Latino	3	100%
White	14	86%
PLA2303	21	76%
Black	2	100%
Hispanic/Latino	2	100%
Two or More Races	2	50%
White	15	73%
PLA2460	24	88%
Black	3	67%
Hispanic/Latino	3	100%
Two or More Races	1	100%
Unknown	1	100%
White	16	88%
PLA2600	12	92%
American Indian/Alas	1	100%
Black	2	100%
Hispanic/Latino	3	100%
Two or More Races	1	100%
White	5	80%
PLA2763	17	88%
Black	2	100%
Hispanic/Latino	2	100%
White	13	85%

■ Indicates a success rate of 90% or higher
■ Indicates a success rate between 70% and 89%
■ Indicates a success rate below 70%

Source: IR Program Assessment Data

Course Success Rates by IM, Campus and Race/Ethnicity (5 of 7)

Program, Course & Race/Ethnicity	2018-2019	
	Attempted	% Successful
2062 - Paralegal-Legal Asst	664	81%
PLA2880	18	83%
Black	2	100%
Hispanic/Latino	5	80%
Two or More Races	2	50%
White	9	89%
2084 - Accounting Technology	1486	78%
ACG2021	618	68%
American Indian/Alas	2	50%
Asian	20	90%
Black	57	44%
Hispanic/Latino	79	61%
Native Hawaiian/Paci	2	0%
Two or More Races	23	39%
Unknown	15	67%
White	420	73%
ACG2071	381	85%
American Indian/Alas	1	100%
Asian	21	90%
Black	26	73%
Hispanic/Latino	43	84%
Two or More Races	9	78%
Unknown	9	78%
White	272	86%
APA1111	56	84%
Asian	1	100%
Black	6	83%
Hispanic/Latino	9	89%
Two or More Races	2	50%
White	38	84%

Program, Course & Race/Ethnicity	2018-2019	
	Attempted	% Successful
2084 - Accounting Technology	1486	78%
APA1121	45	87%
Asian	2	50%
Black	5	80%
Hispanic/Latino	6	67%
Two or More Races	3	67%
White	29	97%
APA1711	67	91%
Asian	2	50%
Black	8	100%
Hispanic/Latino	4	75%
Two or More Races	2	100%
Unknown	1	100%
White	50	92%
FIN1100	181	83%
Asian	2	50%
Black	25	60%
Hispanic/Latino	28	71%
Native Hawaiian/Paci	1	100%
Two or More Races	5	100%
Unknown	1	100%
White	119	90%
FIN2000	80	78%
Asian	3	100%
Black	18	72%
Hispanic/Latino	11	73%
Two or More Races	4	50%
Unknown	1	100%
White	43	81%

■ Indicates a success rate of 90% or higher
■ Indicates a success rate between 70% and 89%
■ Indicates a success rate below 70%

Course Success Rates by IM, Campus and Race/Ethnicity (6 of 7)

Program, Course & Race/Ethnicity	2018-2019	
	Attempted	% Successful
2084 - Accounting Technology	1486	78%
TAX2000	58	86%
Asian	1	100%
Black	14	86%
Hispanic/Latino	4	100%
White	39	85%
2228 - Office Adm-Med Systems	9	100%
OST2461	9	100%
Black	1	100%
Two or More Races	1	100%
White	7	100%
2229 - Office Administration	288	83%
OST1100	42	79%
Black	9	78%
Hispanic/Latino	3	67%
Two or More Races	1	100%
Unknown	3	33%
White	26	85%
OST1110	21	81%
Black	4	75%
Hispanic/Latino	3	33%
Two or More Races	2	100%
White	12	92%
OST1330	26	88%
Black	5	100%
Hispanic/Latino	1	100%
Two or More Races	2	100%
Unknown	2	50%
White	16	88%

Program, Course & Race/Ethnicity	2018-2019	
	Attempted	% Successful
2229 - Office Administration	288	83%
OST2336	22	73%
Black	6	33%
Two or More Races	1	100%
White	15	87%
OST2401	43	91%
Black	9	78%
Hispanic/Latino	4	100%
Unknown	2	50%
White	28	96%
OST2431	17	100%
Black	2	100%
Hispanic/Latino	3	100%
Two or More Races	1	100%
White	11	100%
OST2501	21	76%
Black	7	43%
Two or More Races	1	100%
Unknown	1	100%
White	12	92%
OST2713	21	100%
Black	3	100%
Hispanic/Latino	1	100%
Two or More Races	2	100%
Unknown	1	100%
White	14	100%
OST2828	7	86%
Black	2	50%
White	5	100%

■ Indicates a success rate of 90% or higher
■ Indicates a success rate between 70% and 89%
■ Indicates a success rate below 70%

Source: IR Program Assessment Data

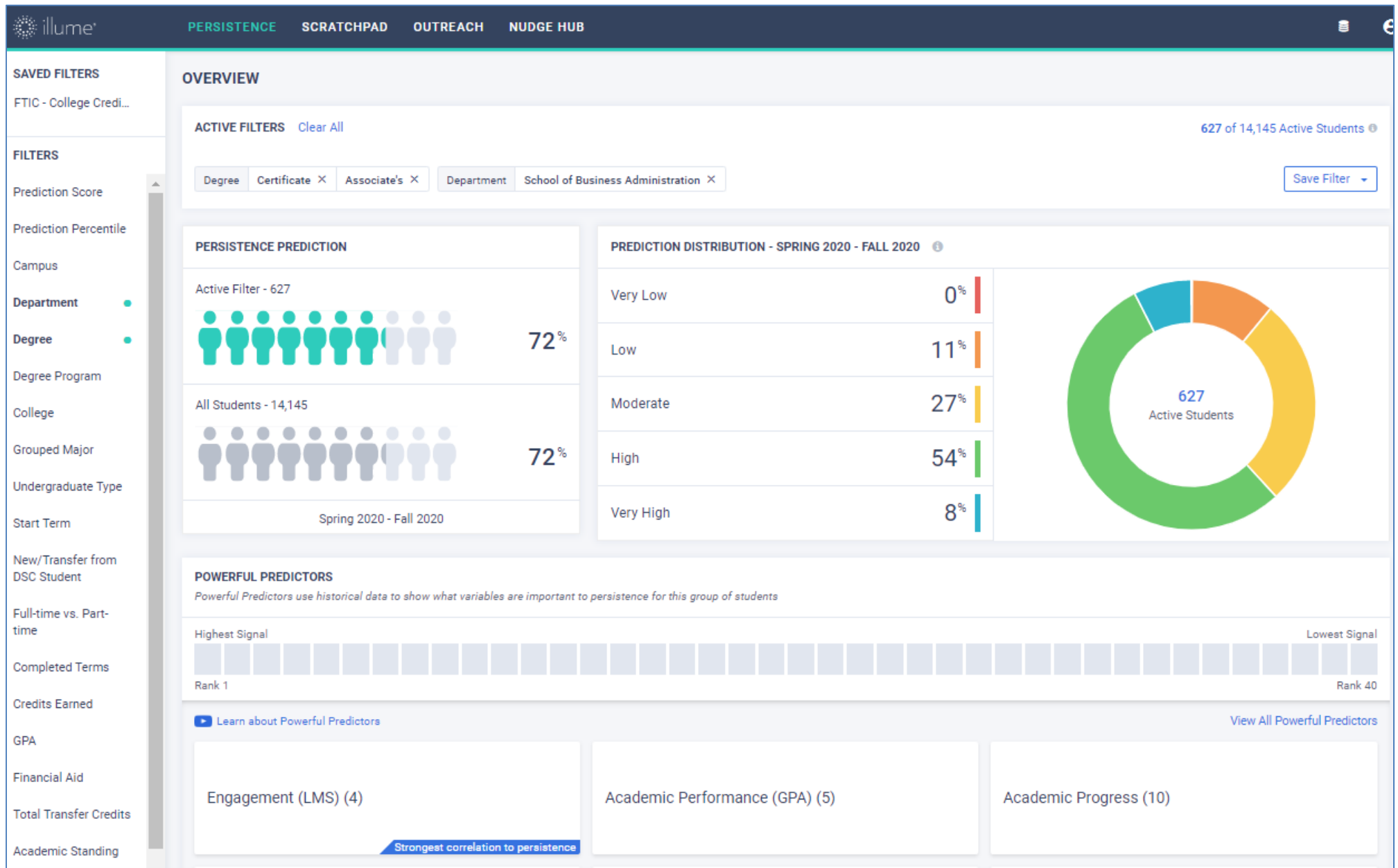
Course Success Rates by IM, Campus and Race/Ethnicity (7 of 7)

Program, Course & Race/Ethnicity	2018-2019	
	Attempted	% Successful
2229 - Office Administration	288	83%
QMB1001	68	74%
Black	12	58%
Hispanic/Latino	9	89%
Two or More Races	2	50%
White	45	76%
Grand Total	6607	79%

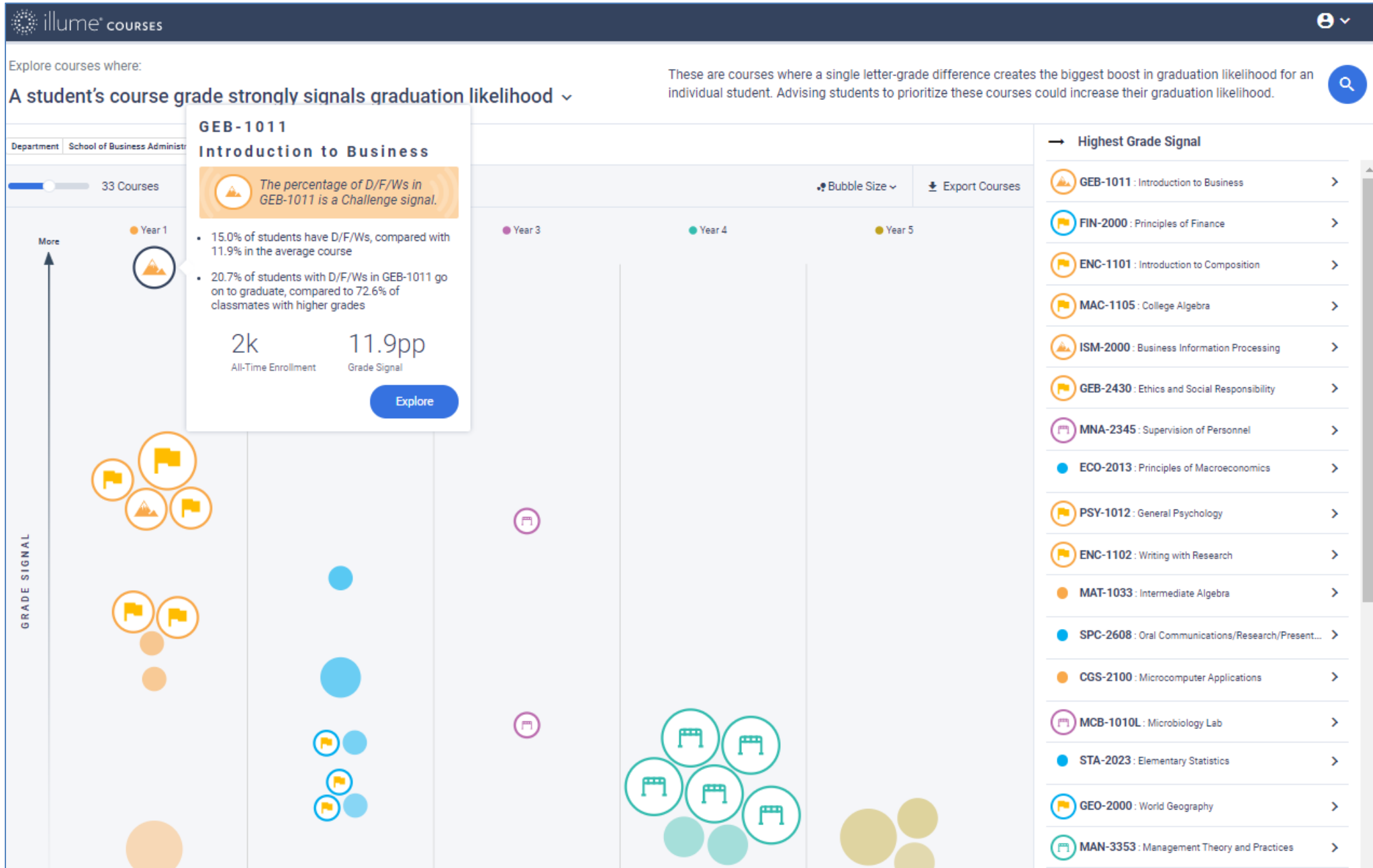
■ Indicates a success rate of 90% or higher
■ Indicates a success rate between 70% and 89%
■ Indicates a success rate below 70%

Source: IR Program Assessment Data

Civitas – illum Students



Civitas – illumine Courses





2019-2020

Academic Affairs

Assessment Day – Program Guides

*A Review of Program Guide and Course Catalog
Information*

Program Guides - Overview

- Given Assessment Day results, are there any changes needed to or desired for the Program Guide?
- Please Review:
 - Program Information
 - General Education Course Selections (if applicable)
 - Program Course Catalog Information
 - Program of Study

Program Guides – Information Review

- Mission statement
 - Does it accurately state the purpose and goals of the program?
- Description
 - Does it clearly portray the nature of the program and any unique characteristics (i.e. embedded certificates, industry certifications, program accreditations, etc.)?

Program Guides – General Ed. Review

- General Education Courses *(if applicable)*
 - Are the selection of courses aligned with the academic knowledge students need to be successful in the related field(s)/occupations?
 - Must be a minimum of 15 credit hours for A.S. programs
(F.A.C. [6A-10.024](#))
 - Must include ENC1101 and a Math Core course
 - Do the selection of courses allow for seamless transition to the Baccalaureate level (if applicable)?

Program Guides – Course Reqs. Review

- Program Specific Course Requirements
 - Are the courses relevant to the academic and technical skills required in the related field(s)/occupation(s)?
 - Are there any required courses offered by another department? If so, consult with that department on upcoming changes (if any).
 - Are there any courses that have not been offered in over 5 years?

Program Guides – Course Info. Review

- Program Specific Course Catalog Information
 - Is the course description accurate?
 - Are the course prefix, number and/or title relevant?
 - Are the term offerings up-to-date?
 - Are the prerequisite and corequisite course assignments appropriate to what students need to know to be successful in the requisite (*required*) course?

Program Guide – Program of Study Review

- Program of Study
 - Is the sequence of courses structured from foundational to advanced content, as appropriate?
 - Does the sequence align with course, term offerings?
 - Does the sequence align with course, prerequisite/co-requisite assignments?
 - Are there any special notes/information missing, incorrect or desired?