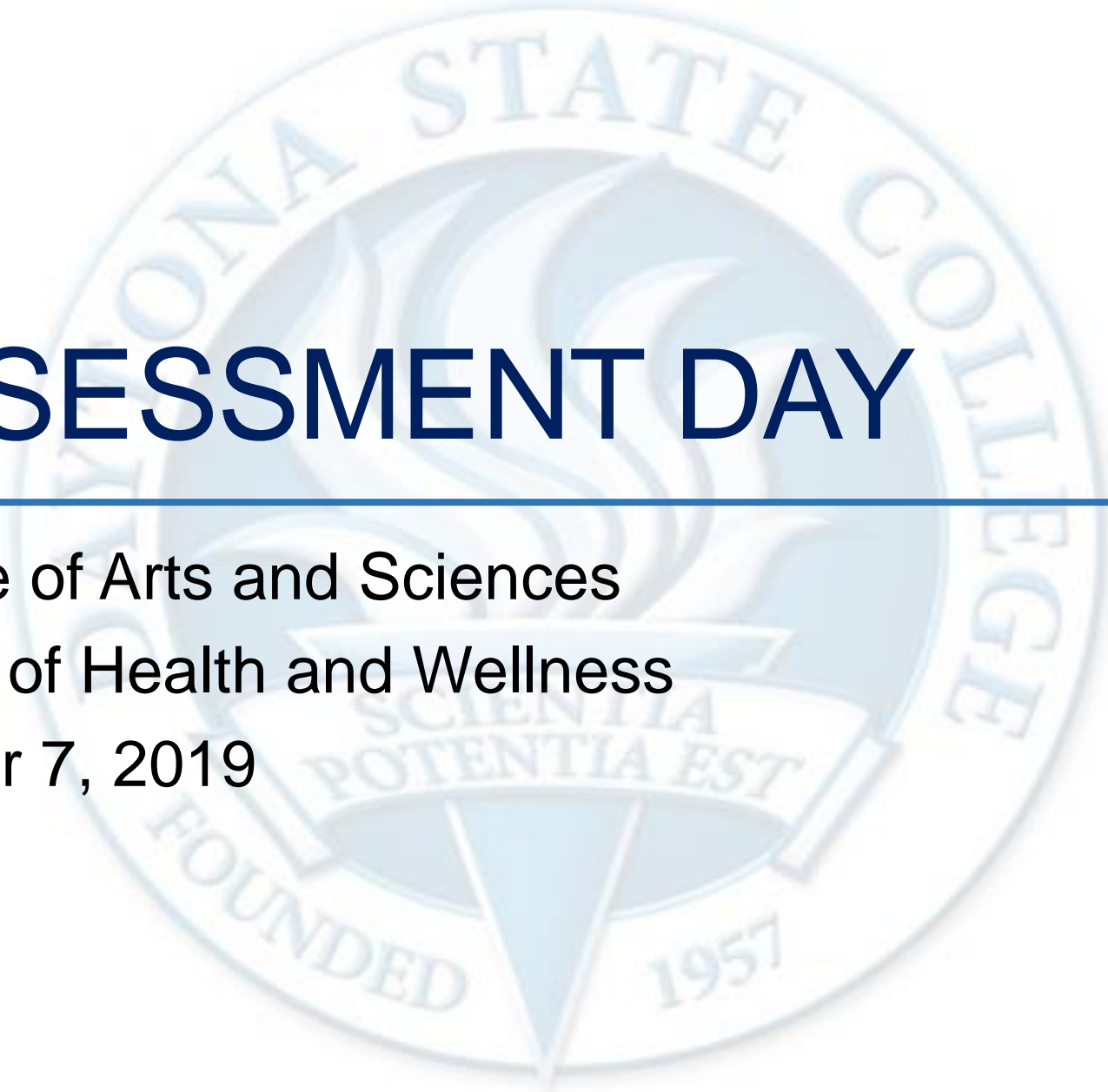


ASSESSMENT DAY

College of Arts and Sciences
School of Health and Wellness
October 7, 2019



Strengths

Challenges

Recommendations

Academic Assessment

| | LEVEL | FOCUS | CONDUCTED BY | FREQUENCY |
|-------------------------------------|-------------------|--|---------------------------|---------------|
| Academic Success Committee | Program | <ul style="list-style-type: none"> Quality of assessment practices | Committee of peers | Years 1 & 2 |
| Instructional Program Review | Program / Cluster | <ul style="list-style-type: none"> Enrollment, retention, completion Industry certifications and job placement Program budget and staffing Advisory committees Curriculum changes | Committee of peers | Year 3 |
| Assessment Day | Course/ Program | <ul style="list-style-type: none"> Enrollment by demographics Graduation and retention Average class size Course success rate Placement rate SLOs, PLOs and ILOs | Program Chair and Faculty | Years 1, 2, 3 |

Last Assessment Day – Action Items

Last Assessment Day: 11-2-2018:

- Considering having a digital copy of the first chapter available to students in Falcon Online
- Confirm that dual enrolled students are also part of the new student orientation initiative (Michelle)
- Reach out to TRiO and MOCI
- Civitas outreach campaign to promote PET2084

Course Learning Outcome – HUN1201

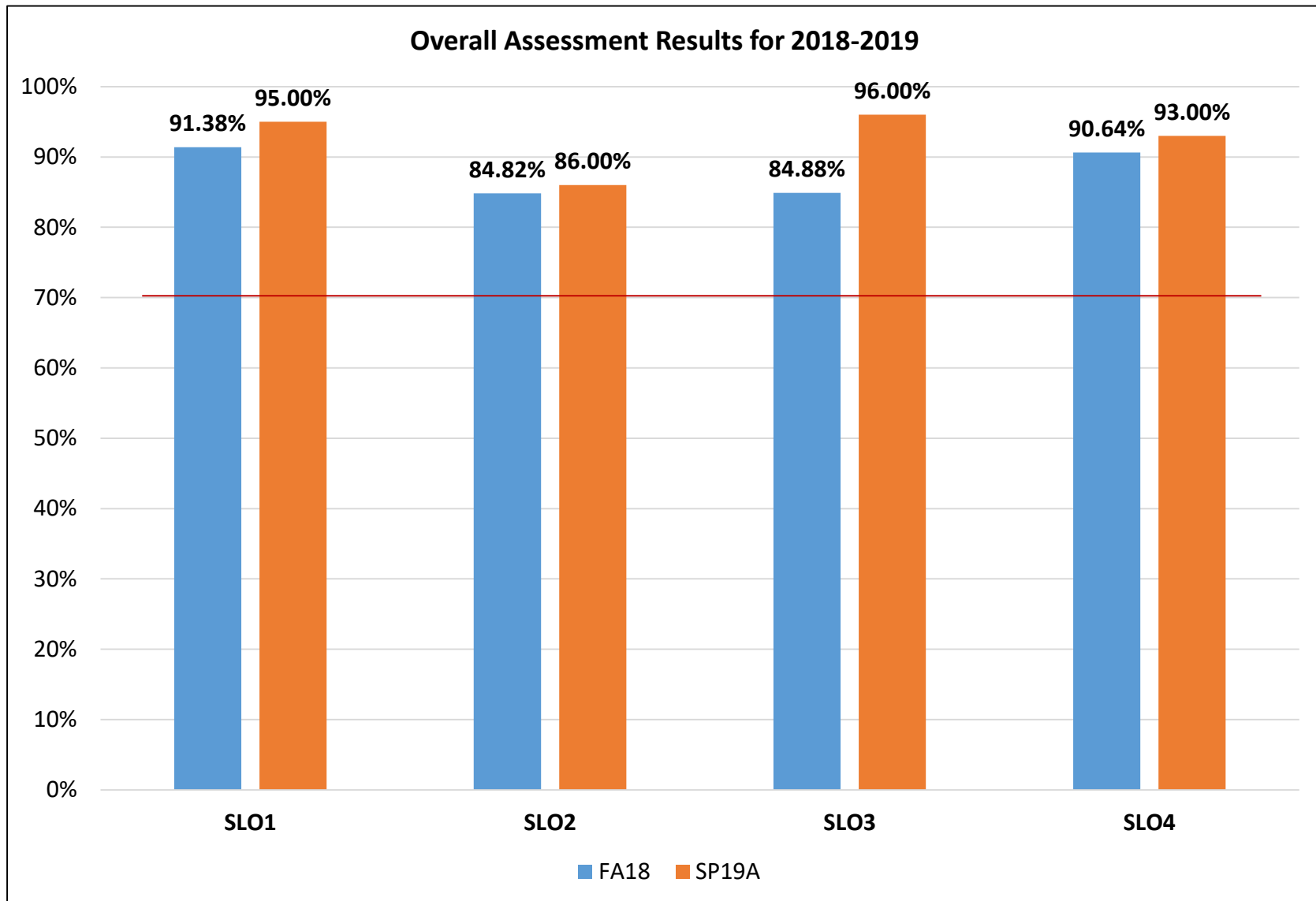
SLO1: Describe how food and nutrients affect the health of the human body throughout the lifecycle, and in relationship to fitness, weight control, and the prevention of diet related chronic disease. (1)

SLO 2: Integrate nutritional thinking into daily life by analyzing and evaluating how personal food and lifestyle choices impact overall health, wellbeing, and the world in which we live. (1)

SLO 3: Apply evidence based information to answer questions that explore assumptions, concepts, and recommendations within the field of nutrition. (1, 4)

SLO 4: Discuss cultural influences and perspectives on food, nutrition and health. (3)

Course Learning Outcome Assessment – HUN1201



Course Learning Outcome Assessment – HUN1201

| FA FACE TO FACE | |
|-----------------|--------|
| FULL | |
| SLO1 | 91.64% |
| SLO2 | 86.33% |
| SLO3 | 85.79% |
| SLO4 | 91.25% |

| FA HYBRID | | FA HYBRID | | FA HYBRID | | FA HYBRID | |
|-----------|--------|-----------|--------|-----------|--------|-----------|--------|
| A | | B | | FULL | | ALL | |
| SLO1 | 94.37% | SLO1 | 92.23% | SLO1 | 91.65% | SLO1 | 92.75% |
| SLO2 | 85.02% | SLO2 | 87.64% | SLO2 | 86.33% | SLO2 | 86.33% |
| SLO3 | 86.46% | SLO3 | 87.72% | SLO3 | 79.91% | SLO3 | 84.69% |
| SLO4 | 93.16% | SLO4 | 92.08% | SLO4 | 85.70% | SLO4 | 90.31% |

| FA ONLINE | | FA ONLINE | | FA ONLINE | | FA ONLINE | |
|-----------|--------|-----------|--------|-----------|--------|-----------|--------|
| A | | B | | FULL | | ALL | |
| SLO1 | 90.77% | SLO1 | 88.51% | SLO1 | 89.96% | SLO1 | 89.75% |
| SLO2 | 82.99% | SLO2 | 80.37% | SLO2 | 82.08% | SLO2 | 81.81% |
| SLO3 | 84.63% | SLO3 | 83.79% | SLO3 | 84.07% | SLO3 | 84.16% |
| SLO4 | 91.42% | SLO4 | 88.79% | SLO4 | 90.89% | SLO4 | 90.37% |

| SPRING A HYBRID | |
|-----------------|-----|
| SLO 1 | 96% |
| SLO2 | 87% |
| SLO3 | 96% |
| SLO4 | 94% |
| | |
| SPRING A ONLINE | |
| SLO 1 | 95% |
| SLO2 | 85% |
| SLO3 | 95% |
| SLO4 | 91% |

Course Learning Outcome – PET2084

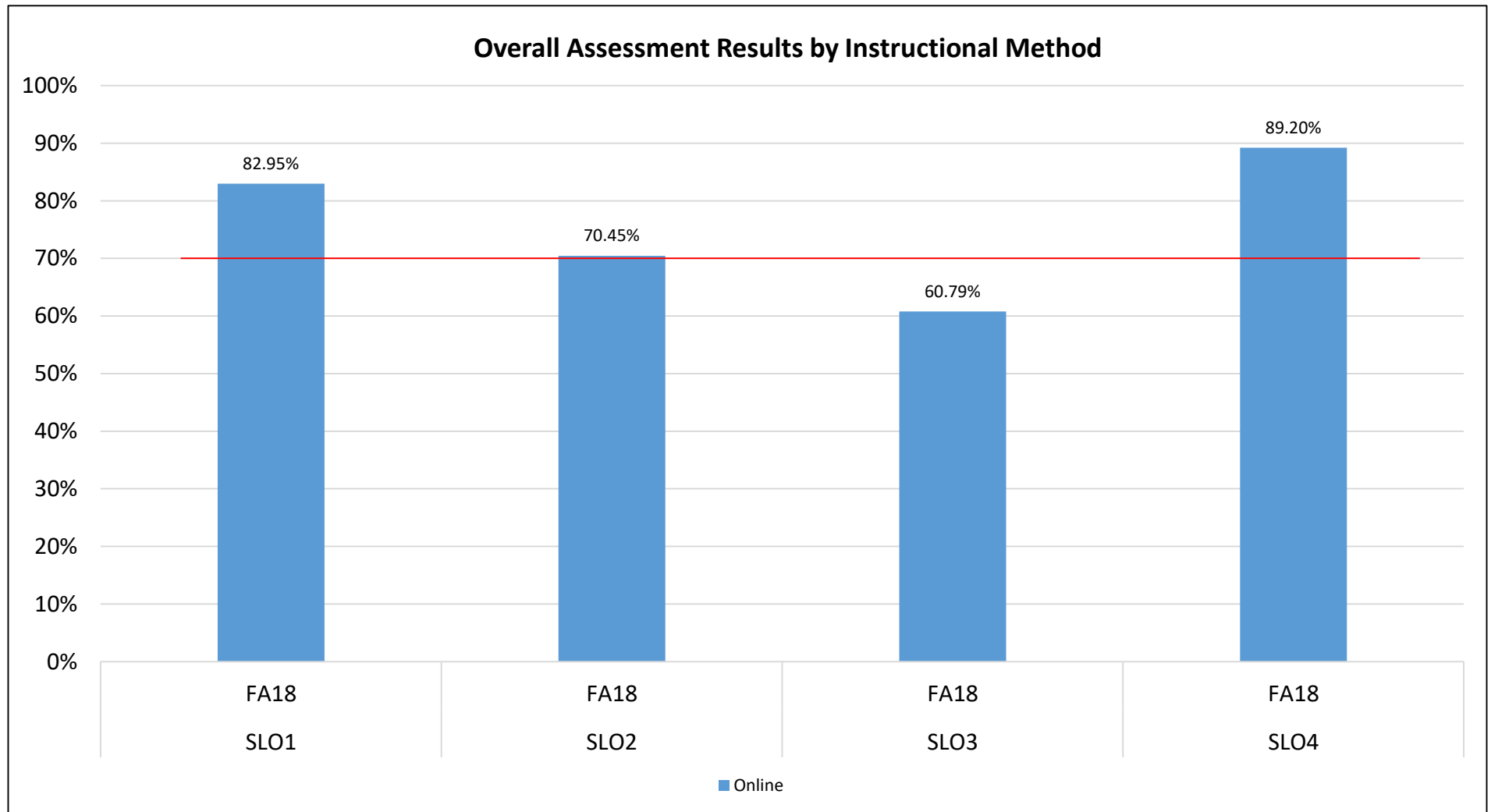
SLO1: Identify various diseases processed and evaluate those to determine how lifestyle factors impact the disease process, and identify positive/healthy lifestyle choices that would delay the gradual onset of chronic diseases. (1,2,3,4)

SLO 2: Integrate nutritional thinking into daily life by analyzing and evaluating how personal food and lifestyle choices impact overall health, well-being, and the world in which we live. (1,2,4)

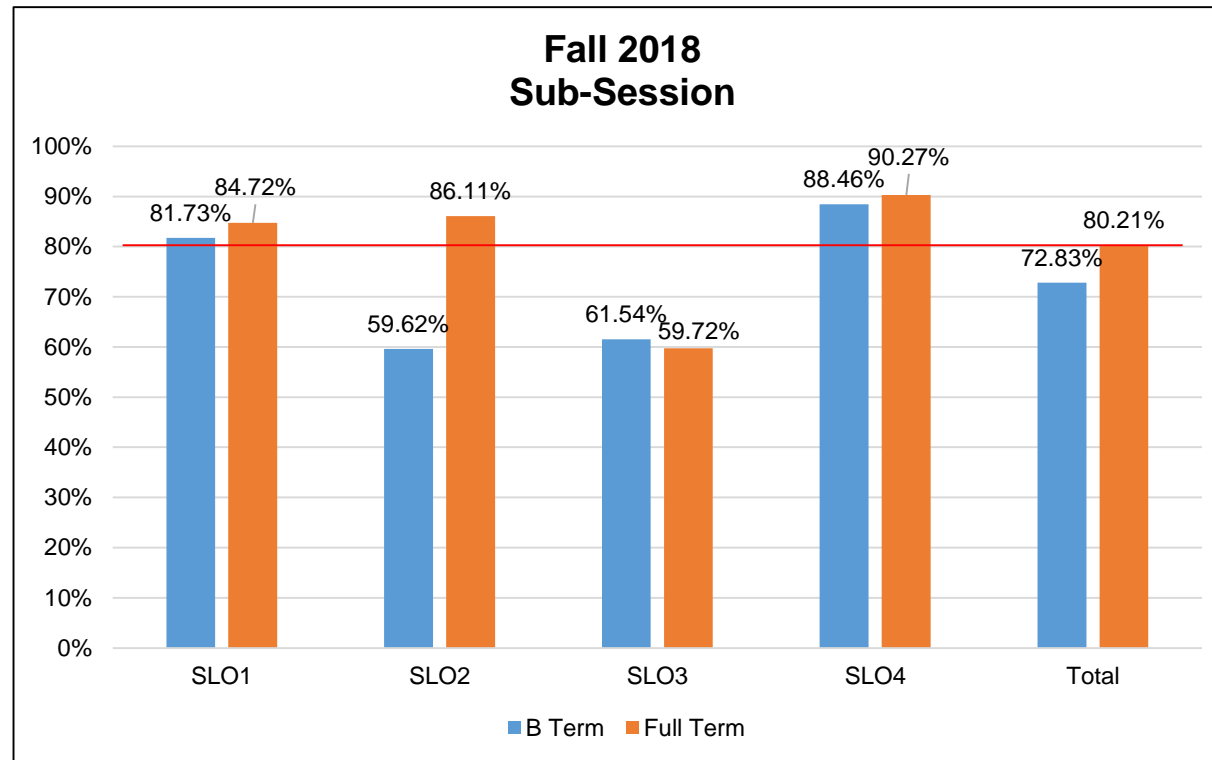
SLO 3: Identify personal exercise and fitness behaviors that are healthy and will assist in the developing a pattern of behavior which lends itself to a positive overall healthy lifestyle. (1,2,4)

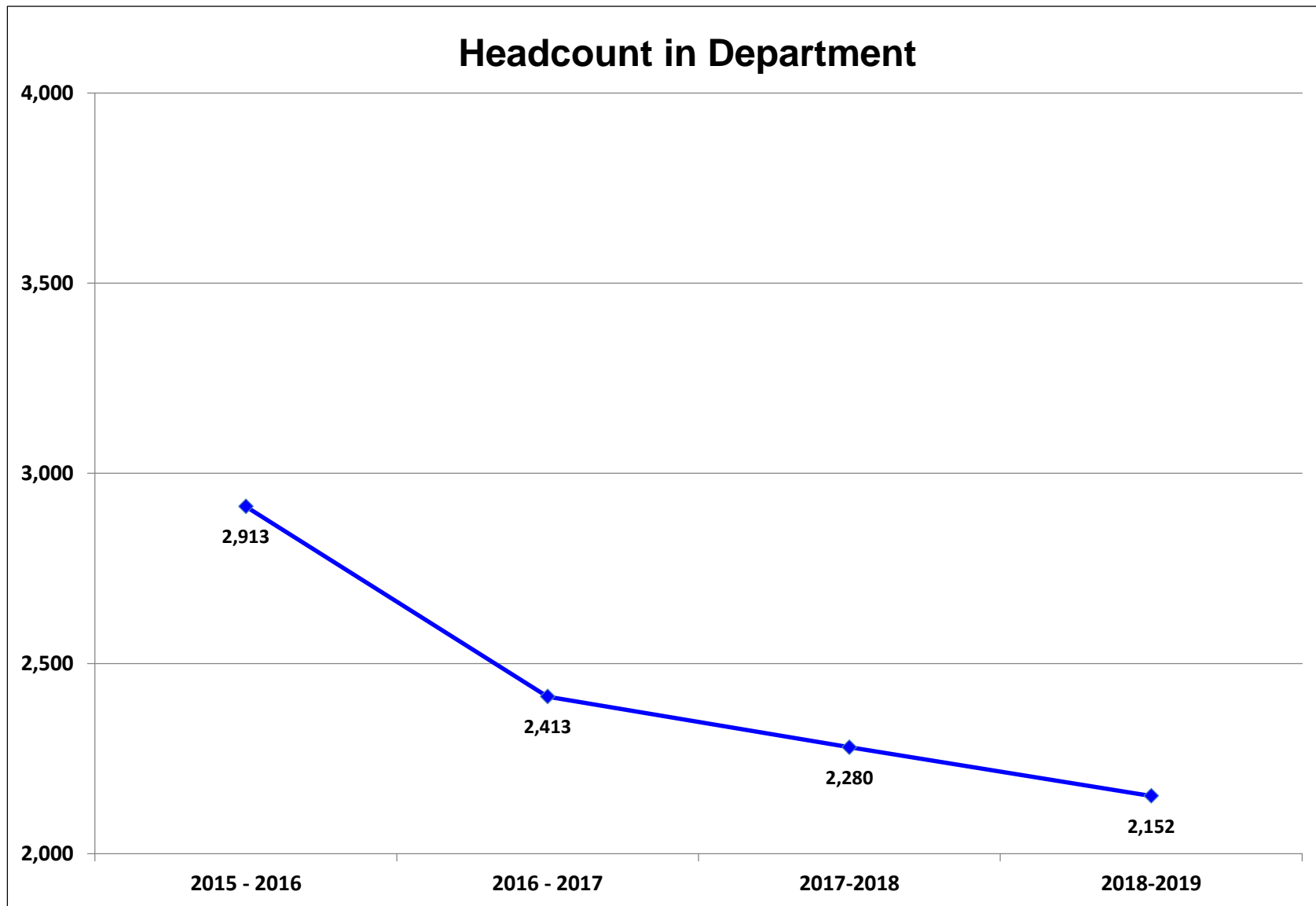
SLO 4: Apply evidence-based information to answer questions that explore assumptions, concepts, and recommendations regarding one's personal behaviors as they relate to one's overall personal health and wellness (Health Continuum) and behavior change process. (1,2,4)

Course Learning Outcome Assessment – PET2084



Course Learning Outcome Assessment – PET2084





Dual Enrollment count for 2018-2019: 356

Course Success Rate

| Associated Courses | 2015-2016 | | 2016-2017 | | 2017-2018 | | 2018-2019 | |
|--------------------|-------------|--------------|-------------|--------------|-------------|--------------|-------------|--------------|
| | Attempted | % Successful | Attempted | % Successful | Attempted | % Successful | Attempted | % Successful |
| HLP1081 | 166 | 73% | 104 | 85% | 73 | 86% | 10 | 80% |
| HUN1201 | 2078 | 82% | 2034 | 84% | 2064 | 82% | 1995 | 84% |
| HUN1270 | 56 | 93% | 27 | 93% | | | 33 | 97% |
| PET2621 | | | | | 16 | 100% | 9 | 78% |
| PET2084 | 818 | 77% | 421 | 76% | 276 | 82% | 224 | 82% |
| Total | 3118 | 80% | 2586 | 83% | 2429 | 82% | 2271 | 84% |

■ Indicates a success rate of 90% or higher
■ Indicates a success rate between 70% and 89%
■ Indicates a success rate below 70%

Course Success Rate by Campus – Multiple Campuses Only

| Associated Courses and Campus | 2015-2016 | | 2016-2017 | | 2017-2018 | | 2018-2019 | | |
|-------------------------------|------------------|--------------|-------------|--------------|--------------|--------------|-------------|--------------|-----|
| | Attempted | % Successful | Attempted | % Successful | Attempted | % Successful | Attempted | % Successful | |
| HUN1201 | Daytona | 422 | 85% | 485 | 90% | 578 | 85% | 792 | 86% |
| | Deland | 186 | 85% | 144 | 94% | 132 | 80% | 118 | 86% |
| | Deltona | 160 | 89% | 114 | 84% | 113 | 80% | 66 | 85% |
| | Flagler/Palm Cst | 126 | 87% | 169 | 83% | 168 | 85% | 241 | 85% |
| | New Smyrna Beach | 70 | 77% | 45 | 80% | 37 | 97% | 52 | 87% |
| | Online | | | | | 1,036 | 79% | 726 | 80% |
| PET2084 | Daytona | | | | | | 70 | 81% | |
| | Online | | | | | | 154 | 82% | |
| Total | 964* | 86% | 957* | 88% | 2,429 | 82% | 2271 | 84% | |

*Excludes fully online courses

- Indicates a success rate of 90% or higher
- Indicates a success rate between 70% and 89%
- Indicates a success rate below 70%

Source: IR Program Assessment Data

School Course Success Rate by Campus – Overall

| Campus | 2016-2017 | | 2017-2018 | | 2018-2019 | | |
|------------------|--------------|--------------|--------------|--------------|-------------|--------------|---|
| | Attempted | % Successful | Attempted | % Successful | Attempted | % Successful | |
| Daytona | 654 | 87% | 693 | 85% | 914 | 86% | ↑ |
| DeLand | 144 | 94% | 132 | 92% | 118 | 86% | |
| Deltona | 114 | 84% | 113 | 80% | 66 | 85% | ↑ |
| Flagler/Palm Cst | 169 | 83% | 168 | 85% | 241 | 85% | |
| New Smyrna Beach | 45 | 80% | 37 | 97% | 52 | 87% | ↑ |
| Online | | | 1,286 | 79% | 880 | 81% | |
| Total | 1126* | 87% | 2,429 | 82% | 2271 | 84% | |

*Excludes fully online courses

■ Indicates a success rate of 90% or higher
■ Indicates a success rate between 70% and 89%
■ Indicates a success rate below 70%

Source: IR Program Assessment Data

Course Success Rate By Instructional Method – Multiple Methods Only

| Associated Courses and Instructional Method | 2015-2016 | | 2016-2017 | | 2017-2018 | | 2018-2019 | | |
|---|-----------|--------------|-----------|--------------|-----------|--------------|-----------|--------------|-----|
| | Attempted | % Successful | Attempted | % Successful | Attempted | % Successful | Attempted | % Successful | |
| HUN1201 | Hybrid | 438 | 82% | 323 | 88% | 460 | 84% | 495 | 84% |
| | Lecture | 526 | 88% | 634 | 88% | 539 | 87% | 421 | 86% |
| | Online | 1114 | 78% | 1077 | 80% | 1065 | 79% | 1079 | 83% |
| PET2084 | Lecture | 120 | 64% | 38 | 55% | 26 | 77% | | |
| | Online | 698 | 80% | 383 | 79% | 250 | 82% | 224 | 82% |
| DSC | Hybrid | | 82% | | 81% | | 83% | | 82% |
| | Lecture | | 80% | | 81% | | 83% | | 83% |
| | Online | | 78% | | 76% | | 78% | | 80% |



■ Indicates a success rate of 90% or higher
■ Indicates a success rate between 70% and 89%
■ Indicates a success rate below 70%

School Course Success Rate By Instructional Method

| Instructional Method | 2015-2016 | | 2016-2017 | | 2017-2018 | | 2018-2019 | |
|----------------------|-------------|--------------|-------------|--------------|-------------|--------------|-------------|--------------|
| | Attempted | % Successful | Attempted | % Successful | Attempted | % Successful | Attempted | % Successful |
| Hybrid | 438 | 82% | 323 | 88% | 460 | 84% | 495 | 84% |
| Lecture | 868 | 82% | 803 | 86% | 653 | 87% | 473 | 87% |
| Online | 1812 | 79% | 1460 | 80% | 1315 | 79% | 1303 | 83% |
| Total | 3118 | 80% | 2586 | 83% | 2428 | 82% | 2271 | 84% |



■ Indicates a success rate of 90% or higher
■ Indicates a success rate between 70% and 89%
■ Indicates a success rate below 70%

Course Success Rates- Multiple Sessions or Sub-sessions Only

| Associated Courses and Sub-session | | | 2015-2016 | | 2016-2017 | | 2017-2018 | | 2018-2019 | |
|------------------------------------|----|-----------|-----------|--------------|-----------|--------------|-----------|--------------|-----------|--------------|
| | | | Attempted | % Successful | Attempted | % Successful | Attempted | % Successful | Attempted | % Successful |
| HLP1081 | FA | Full term | 89 | 78% | 45 | 80% | 24 | 83% | 10 | 80% |
| | SP | Full term | 77 | 69% | 59 | 88% | 49 | 88% | | |
| HUN1201 | | A term | 152 | 75% | 124 | 85% | 218 | 85% | 135 | 92% |
| | FA | B term | 133 | 76% | 110 | 73% | 106 | 69% | 158 | 84% |
| | | Full term | 629 | 82% | 521 | 87% | 504 | 84% | 555 | 83% |
| | | A term | 137 | 82% | 150 | 87% | 105 | 83% | 197 | 89% |
| | SP | B term | 129 | 81% | 143 | 76% | 122 | 69% | 200 | 74% |
| | | Full term | 581 | 84% | 585 | 82% | 566 | 84% | 380 | 81% |
| | SU | Full term | 317 | 84% | 401 | 87% | 443 | 83% | 370 | 88% |
| HUN1270 | FA | Full term | | | | | | | 12 | 100% |
| | SP | Full term | | | | | | | 21 | 95% |
| PET2084 | | A term | 99 | 80% | 69 | 75% | 24 | 83% | 18 | 100% |
| | FA | B term | 101 | 74% | 36 | 64% | 23 | 70% | 30 | 77% |
| | | Full term | 118 | 75% | 56 | 71% | 61 | 84% | 20 | 75% |
| | | A term | 105 | 90% | 44 | 77% | 19 | 89% | 27 | 96% |
| | SP | B term | 103 | 77% | 33 | 76% | 36 | 81% | 42 | 74% |
| | | Full term | 54 | 50% | 65 | 77% | 50 | 86% | | |
| | SU | Full term | 238 | 80% | 118 | 83% | 63 | 78% | 87 | 80% |

■ Indicates a success rate of 90% or higher
■ Indicates a success rate between 70% and 89%
■ Indicates a success rate below 70%

Source: IR Program Assessment Data

School Course Success Rate By Sub-session

| Session and Sub-session | | 2015-2016 | | 2016-2017 | | 2017-2018 | | 2018-2019 | |
|-------------------------|---------------|-----------|--------------|-----------|--------------|-----------|--------------|-----------|--------------|
| | | Attempted | % Successful | Attempted | % Successful | Attempted | % Successful | Attempted | % Successful |
| FA | A term | 251 | 77% | 193 | 82% | 242 | 85% | 153 | 93% |
| | B term | 234 | 75% | 146 | 71% | 129 | 69% | 188 | 82% |
| | Full term | 892 | 81% | 649 | 85% | 604 | 84% | 597 | 83% |
| | Session Total | 1377 | 79% | 988 | 82% | 975 | 82% | 938 | 84% |
| SP | A term | 242 | 86% | 194 | 85% | 124 | 84% | 224 | 90% |
| | B term | 232 | 79% | 176 | 76% | 158 | 72% | 242 | 74% |
| | Full term | 712 | 79% | 709 | 82% | 665 | 85% | 410 | 82% |
| | Session Total | 1186 | 81% | 1079 | 81% | 947 | 82% | 876 | 82% |
| SU | Full term | 555 | 82% | 519 | 86% | 506 | 82% | 457 | 86% |
| Total | | 3118 | 80% | 2586 | 83% | 2429 | 82% | 2271 | 84% |

■ Indicates a success rate of 90% or higher
■ Indicates a success rate between 70% and 89%
■ Indicates a success rate below 70%

Source: IR Program Assessment Data

Course Success Rate By IM and Session/Sub-session

| Course, IM, Session/Sub-session | # Students Enrolled | Success Rate |
|---------------------------------|---------------------|--------------|
| HLP1081 | 10 | 80% |
| Lecture | 10 | 80% |
| Fall 2018 | 10 | 80% |
| Full term | 10 | 80% |
| HUN1201 | 1995 | 84% |
| Online | 1079 | 83% |
| Summer 2018 | 316 | 89% |
| Fall 2018 | 380 | 81% |
| Full term | 224 | 76% |
| A term | 81 | 93% |
| B term | 75 | 81% |
| Spring 2019 | 383 | 80% |
| Full term | 193 | 78% |
| A term | 80 | 85% |
| B term | 110 | 78% |
| Lecture | 421 | 86% |
| Fall 2018 | 276 | 87% |
| Full term | 276 | 87% |
| Spring 2019 | 145 | 86% |
| Full term | 145 | 86% |
| Hybrid | 495 | 84% |
| Summer 2018 | 54 | 81% |
| Fall 2018 | 192 | 88% |
| Full term | 55 | 89% |
| A term | 54 | 91% |
| B term | 83 | 86% |
| Spring 2019 | 249 | 81% |
| Full term | 42 | 79% |
| A term | 117 | 91% |
| B term | 90 | 69% |

| Course, IM, Session/Sub-session | # Students Enrolled | Success Rate |
|---------------------------------|---------------------|--------------|
| HUN1270 | 33 | 97% |
| Lecture | 33 | 97% |
| Fall 2018 | 12 | 100% |
| Full term | 12 | 100% |
| Spring 2019 | 21 | 95% |
| Full term | 21 | 95% |
| PET2084 | 224 | 82% |
| Online | 224 | 82% |
| Summer 2018 | 87 | 80% |
| Fall 2018 | 68 | 82% |
| Full term | 20 | 75% |
| A term | 18 | 100% |
| B term | 30 | 77% |
| Spring 2019 | 69 | 83% |
| A term | 27 | 96% |
| B term | 42 | 74% |
| PET2621 | 9 | 78% |
| Lecture | 9 | 78% |
| Spring 2019 | 9 | 78% |
| Full term | 9 | 78% |

■ Indicates a success rate of 90% or higher
■ Indicates a success rate between 70% and 89%
■ Indicates a success rate below 70%

Source: IR Program Assessment Data

Course Success Rates for Guaranteed Sections

| Course | 2016-2017 | | 2016-2017 Overall | 2017-2018 | | 2017-2018 Overall | 2018-2019 | | 2018-2019 Overall |
|---------|-----------|--------------|----------------------|-----------|--------------|----------------------|-----------|--------------|----------------------|
| | Attempted | % Successful | | Attempted | % Successful | | Attempted | % Successful | |
| HUN1201 | 110 | 83% | 84% | 85 | 84% | 82% | 164 | 82% | 84% |

■ Indicates a success rate of 90% or higher
■ Indicates a success rate between 70% and 89%
■ Indicates a success rate below 70%

Source: IR Program Assessment Data

Course Success Rates for Dual Enrolled Students

| Course | 2017-2018 | | 2017-2018 Overall | 2018-2019 | | 2018-2019 Overall |
|---------|-----------|--------------|-------------------|-----------|--------------|-------------------|
| | Attempted | % Successful | | Attempted | % Successful | |
| HLP1081 | 1 | 100% | 86% | 1 | 100% | 80% |
| HUN1201 | 215 | 93% | 82% | 353 | 92% | 84% |
| HUN1270 | | | | 2 | 100% | 97% |
| PET2084 | 7 | 86% | 82% | | | |
| PET2621 | | | | 1 | 100% | 78% |
| Total | 223 | 92% | | 370 | 92% | |

■ Indicates a success rate of 90% or higher
■ Indicates a success rate between 70% and 89%
■ Indicates a success rate below 70%

Source: IR Program Assessment Data

Course Success Rate By Race/Ethnicity

| Course and Race/Ethnicity | 2017-18 Success Rate | # Students Enrolled | Success Rate |
|---------------------------|----------------------|---------------------|--------------|
| HLP1081 | | 10 | 80% |
| Black | 73% | 1 | 100% |
| Hispanic/Latino | 80% | 2 | 100% |
| White | 91% | 7 | 71% |
| HUN1201 | | 1995 | 84% |
| American Indian/Alas | 100% | 3 | 100% |
| Asian | 85% | 48 | 96% |
| Black | 69% | 240 | 74% |
| Hispanic/Latino | 83% | 336 | 84% |
| Two or More Races | 78% | 82 | 80% |
| Unknown | 79% | 49 | 76% |
| White | 85% | 1237 | 86% |
| HUN1270 | | 33 | 97% |
| Asian | | 1 | 100% |
| Black | | 4 | 100% |
| Hispanic/Latino | | 5 | 100% |
| Two or More Races | | 1 | 100% |
| White | | 22 | 95% |
| PET2084 | | 224 | 82% |
| Asian | 100% | 4 | 25% |
| Black | 70% | 42 | 81% |
| Hispanic/Latino | 84% | 35 | 83% |
| Two or More Races | 67% | 8 | 88% |
| Unknown | 80% | 4 | 75% |
| White | 84% | 131 | 83% |
| PET2621 | | 9 | 78% |
| Black | 100% | 2 | 100% |
| Hispanic/Latino | 100% | 1 | 0% |
| Unknown | 100% | 1 | 100% |
| White | 100% | 5 | 80% |
| Grand Total | | 2271 | 84% |

■ Indicates a success rate of 90% or higher
■ Indicates a success rate between 70% and 89%
■ Indicates a success rate below 70%

Overall Course Success Rate By Race/Ethnicity

| Course and Race/Ethnicity | # Students Enrolled | Success Rate |
|---------------------------|---------------------|--------------|
| American Indian/Alas | 3 | 100% |
| Asian | 53 | 91% |
| Black | 289 | 75% |
| Hispanic/Latino | 379 | 84% |
| Two or More Races | 91 | 81% |
| Unknown | 54 | 76% |
| White | 1402 | 86% |
| Grand Total | 2271 | 84% |

■ Indicates a success rate of 90% or higher
■ Indicates a success rate between 70% and 89%
■ Indicates a success rate below 70%

Civitas



A student's course grade strongly signals graduation likelihood

These are courses where a single letter grade difference creates the biggest boost in graduation likelihood for an individual student. Advising students to prioritize these courses could increase their graduation likelihood.

You have no active filters [Add Filters](#)

42 Courses

Bubble Size

Export Courses

Highest Grade Signal

- **PSY-1012** : General Psychology >
- **SLS-1122** : Managing Your Su... >
- **MAT-1033** : Intermediate Alge... >
- **ENC-1101** : Introduction to Co... >
- **AST-1002** : Astronomy >
- **GEB-2430** : Ethics and Social ... >
- **DEP-2004** : Developmental Ps... >
- **ENC-1102** : Writing with Resea... >
- **ECO-2023** : Principles of Micr... >
- **HUN-1201** : Human Nutrition >
- **GEO-2000** : World Geography >

More

GRADE SIGNAL

Less

Year 1

HUN-1201 Human Nutrition



Earning a C in HUN-1201 is a Yellow Flag signal.

- Students with a C in HUN-1201 are 74.3% likely to persist, but only 42.7% likely to graduate
- Students with a C in HUN-1201 who do persist are 27.6% less likely to graduate than persisting students with higher grades. This drop is 1.7X larger in HUN-1201 than in the average 1st year course.

20k

All-Time Enrollment

9.8pp

Grade Signal

Explore

Year 4

Year 5



Civitas

HUN-1201

Human Nutrition

This introductory course focuses on the principles of nutrition science and how they relate to human physiology and health. Practical applications for using nutrition as part of a personal approach to wellness are emphasized. This course will help satisfy the graduation requirements of the Associate of Arts Degree. [More](#)



You have no active filters. [Add Filters](#)



Earning a C in HUN-1201 is a Yellow Flag signal.

Students with a C in HUN-1201 tend to persist, but they graduate at a rate far lower than students with better grades.

- Students with a C in HUN-1201 are 74.3% likely to persist, but only 42.7% likely to graduate
- Students with a C in HUN-1201 who do persist are 27.6% less likely to graduate than persisting students with higher grades. This drop is 1.7X larger in HUN-1201 than in the average 1st year course.

[View a list of past HUN-1201 students who earned a C and are still enrolled at your institution](#)

TYPICALLY TAKEN
1st Year

CURRENT ENROLLMENT
694 >

ALL-TIME ENROLLMENT
20,117

Key Insights

Graduation

Persistence

INSIGHT

THIS COURSE

[AVG COURSE >](#)

How strongly does a student's grade in this course signal graduation likelihood?

Individual students who improve their grade in this course by one letter have a 9.8 percentage point stronger likelihood of graduation. That's 18.1% higher than the average course.

9.8pp

Stronger Likelihood of Graduation

8.3pp

Stronger Likelihood of Graduation

What course grades predict student success?

Students must earn a A or higher in this course to have an above average likelihood of graduation compared to other students in this course.
[View a list of past HUN-1201 students who earned a B or lower in this course.](#)

A

Tipping Point Grade

B

Tipping Point Grade

How many students are struggling in this course?

13.4% of students in this course withdraw or earn a D or F. That's 61.8% lower than the average course.

13.4%

D/F/W

35.1%

D/F/W

What is this course's potential to boost graduation rates?

If the average student's grade was one letter higher, you'd see a 3.3 percentage point lift in graduation. That's 43.5% higher than the average course.

3.3pp

Lift in Graduation

2.3pp

Lift in Graduation

Civitas

HUN-1201

Human Nutrition

This introductory course focuses on the principles of nutrition science and how they relate to human physiology and health. Practical applications for using nutrition as part of a personal approach to wellness are emphasized. This course will help satisfy the graduation requirements of the Associate of Arts Degree. [More](#)



TOP MAJORS

- 22.0% Associate of Arts Degree
- 11.0% Associate of Arts Degree/Undecided Major - Sub Plan
- 50.2% Other



COURSE MODALITY

- 51.0% Online
- 38.7% OnGround
- 10.3% Blended

You have no active filters [Add Filters](#)

Earning a C in HUN-1201 is a Yellow Flag signal.

Students with a C in HUN-1201 tend to persist, but they graduate at a rate far lower than students with better grades.

- Students with a C in HUN-1201 are 74.3% likely to persist, but only 42.7% likely to graduate
- Students with a C in HUN-1201 who do persist are 27.6% less likely to graduate than persisting students with higher grades. This drop is 1.7X larger in HUN-1201 than in the average 1st year course.

View a list of [past HUN-1201 students who earned a C and are still enrolled at your institution](#)

TYPICALLY TAKEN

1st Year

CURRENT ENROLLMENT

694 >

ALL-TIME ENROLLMENT

20,117

Key Insights

Graduation

Persistence

INSIGHT

THIS COURSE

AVG COURSE >

How strongly does a student's grade in this course signal persistence likelihood?

Individual students who improve their grade in this course by one letter have a 4.2 percentage point stronger likelihood of persistence. That's on par with the average course.

4.2pp

Stronger Likelihood of Persistence

4.2pp

Stronger Likelihood of Persistence

What course grades predict student success?

Students must earn a B or higher in this course to have an above average likelihood of persistence compared to other students in this course. [View a list of currently enrolled students who earned a C or lower in this course.](#)

B

Tipping Point Grade

C

Tipping Point Grade

How many students are struggling in this course?

12.3% of students in this course withdraw or earn a D or F. That's 59.8% lower than the average course.

12.3%

D/F/W

30.6%

D/F/W

How much does student performance in this course influence overall institution persistence rates?

If the selected students in this course improved their grade by one letter, you'd see a 0.0 percentage point lift in persistence. That's on par with the average course.

0.0pp

Lift in Persistence

0.0pp

Lift in Persistence

Program Guide