

ASSESSMENT DAY

College of Business, Engineering and Technology

School of Business Administration

April 7, 2016

Academic Assessment

	LEVEL	FOCUS	CONDUCTED BY	FREQUENCY
Academic Success Committee	Program	<ul style="list-style-type: none"> Quality of assessment practices 	Committee of peers	Years 1 & 2
Instructional Program Review	Program / Cluster	<ul style="list-style-type: none"> Enrollment, retention, completion Industry certifications and job placement Program budget and staffing Advisory committees Curriculum changes 	Committee of peers	Year 3
Assessment Day	Course/ Program	<ul style="list-style-type: none"> Enrollment by demographics Graduation and retention Average class size Course success rate Placement rate SLOs, PLOs and ILOs 	Program Chair and Faculty	Years 1, 2, 3

Programs – Certificates and 2 Year Degree Programs

[2084 - Accounting Technology](#)

[0943 - Accounting Technology Management](#)

[0935 - Accounting Technology Operations - Tax Preparation](#)

[2059 - Business Administration](#)

[0916 - Business Management](#)

[0913 - Business Operations - Entrepreneurship](#)

[2221 - Industrial Management Technology \(Limited Access Program\)](#)

[0817 - Marketing, Sales and Service - Entrepreneurship](#)

[2229 - Office Administration](#)

[2228 - Office Administration \(Medical Systems Option\)](#)

[0914 - Office Management](#)

[0919 - Office Management \(Medical Option\)](#)

[0926 - Office Support \(Technical Certificate\)](#)

[2062 - Paralegal Studies \(Legal Assisting\)](#)

[0979 - Television Studio Production](#)

Courses – Certificates and 2 Year Degree Programs

ACG2021 Principles of Financial Accounting	ACG2071 Principles of Managerial Accounting	APA1111 Computerized Accounting/ Bookkeeping I
APA1121 Computerized Accounting/ Bookkeeping II	APA1711 Computer Spreadsheet	BUL2241 Business Law I
BUL2242 Business Law II	ECO2013 Principles of Macro Economics	ECO2023 Principles of Micro Economics
FIN1100 Personal Financial Planning	FIN2000 Principles of Finance	GEB1011 Introduction to Business
GEB2351 International Business	GEB2430 Ethics and Social Responsibility	GEB2905 Directed Study in Business
ISM2000 Business Information Processing	MAN2021 Principles of Management	MAR2011 Principles of Global Marketing
MAR2101 Social Media Marketing	MAR2321 Advertising	MAR2720 Introduction to E-Commerce
MKA2021 Sales Fundamentals	MNA2161 Quality Service Management	MNA2345 Supervision of Personnel
OST1100 Keyboarding and Formatting I	OST1110 Keyboarding and Formatting II	OST1141 Keyboarding
OST1330 Business English	OST1435 Legal Terminology	OST1711 Word Processing I
OST1760 Word Processing II	OST2336 Business Communications	OST2401 Basic Office Procedures
OST2431 Legal Office Procedures	OST2461 Medical Office Procedures	OST2501 Office Management
OST2713 Advanced Computer Software Applications	OST2828 Business Presentation Software	OST2852 Excel for the Office
PLA1003 Introduction to Paralegal	PLA1103 Legal Writing and Research I	PLA1610 Real Estate Law and Property
PLA1800 Law of Domestic Relations	PLA2114 Legal Writing and Research II	PLA2200 Introduction to Litigation, Torts and Evidence
PLA2303 Criminal Law and the Paralegal	PLA2460 Bankruptcy Law	PLA2600 Probate Administration
PLA2763 Law Office Management	PLA2880 Constitutional Law	PLA2905
PLA2949 Cooperative Education Experience in Legal Assisting	QMB1001 Business Math	RTV1000 Fundamentals of Broadcast Production
RTV1000L Fundamentals of Broadcast Production Lab	RTV1510 Studio Television Production	RTV1510L Studio Television Production Lab
RTV2541 Team Media Production	RTV2541L Team Media Production Lab	RTV2600 Acting for the Lens and Camera
RTV2600L Acting for the Lens and Camera Lab	SBM2000 Small Business Management	TAX2000 Personal Income Tax

Action Items from Last Assessment Day (1 of 2)

Assessment Day (02/17/2015) - Certificates and 2 Year Degree Programs

Institutional Effectiveness:

- Programs' names on the PowerPoint headcount table do not match the programs' names on our current catalog. Cassandra will get with Kristy to explain where we are getting the programs' names in the system to see if that field needs to be updated by the School of Applied Business.
- Paralegal program needs to be added to the Average Age table and chart.
- Request was made to see if it is possible to get the average age for our sister colleges.
- Request was made to see if it is possible to get retention rate, time to degree by program, and average credit hours taken by students.
- Request was made to add the Gender by major overall by program.
- Request was made to add college average class size by instructional method for the total School in the PowerPoint presentation.
- Request was made to add average class size by campus.
- Request was made to double check the Gender by major numbers for 0979 - Television Studio Production program for 2011-2012.
- Request was made to add to the PowerPoint the Race/Ethnicity table instead of the chart since it is hard to read when multiple programs.
- Request was made to add to the course success rate table the total for each course.
- Request was made to see the number of students by sub-session.
- Request was made to change the due date for all learning outcome assessment programs from August 31 to October 31 to be able to include summer numbers.

Action Items from Last Assessment Day (2 of 2)

Assessment Day (02/17/2015) - Certificates and 2 Year Degree Programs

School of Applied Business:

- Accounting Technology: “Bookkeeping” term is still being used. Changes will be made for this new catalog year 15-16.
- Faculty will gather to come up with actions items to increase graduation numbers since none of the programs are aligning with the number of students enrolled in the program.
- Program assessment:
 - Revise target
 - Make sure to include three ways to measure an outcome
 - Make sure to include results per each assessment measure

Headcount by Major

Major	2012-2013	2013-2014	2014-2015
2059 - BUSINESS ADMINISTRATION	243	277	349
2062 - PARALEGAL-LEGAL ASST	140	143	140
2084 - ACCOUNTING TECHNOLOGY	120	102	104
2229 - OFFICE ADMINISTRATION	48	56	71
0916 - BUSINESS MANAGEMENT	44	41	57
2228 - OFFICE ADM-MED SYSTEMS	23	42	40
0919 - OFFICE MGMT-MEDICAL	30	32	28
0914 - OFFICE MANAGEMENT	24	23	23
0943 - ACCOUNTING TECH MGMT	24	25	21
2221 - INDUSTRIAL MGMT TECH	9	12	10
0979 - TELEVISION STUDIO PROD	3	7	9
0913 - BUSINESS OPER/ENTREPREN.	6	8	5
0935 - ACCOUNTING OPER-TAX PREP	4	6	4
0817 - MARKETING, SALES,SER ENT		1	1
0926 - OFFICE SUPPORT-TECH. CER	1	2	
Total	705	760	843

College Headcount decreased: 2012/13 (9.6%), 2013/14 (6%), 2014/15 (7%)

Average Age by Program

Program		2012-2013	2013-2014	2014-2015
0817	MARKETING, SALES,SER ENT		40	58
0913	BUSINESS OPER/ENTREPREN	25	33	30
0914	OFFICE MANAGEMENT	40	45	43
0916	BUSINESS MANAGEMENT	37	34	30
0919	OFFICE MGMT-MEDICAL	41	44	36
0926	OFFICE SUPPORT-TECH. CER	53	37	
0935	ACCOUNTING OPER-TAX PREP	34	38	26
0943	ACCOUNTING TECH MGMT	42	38	42
0979	TELEVISION STUDIO PROD	41	31	34
2059	BUSINESS ADMINISTRATION	32	33	31
2062	PARALEGAL-LEGAL ASST	34	33	32
2084	ACCOUNTING TECHNOLOGY	37	38	35
2221	INDUSTRIAL MGMT TECH	39	42	40
2228	OFFICE ADM-MED SYSTEMS	33	35	39
2229	OFFICE ADMINISTRATION	32	36	40

Calculation excludes individuals whose birthdates are not reported.

	2012-2013	2013-2014	2014-2015
All Programs	29.4	31.7	31.8
Daytona State College	26.7	26.6	26.4

Gender

Program	2012-2013		2013-2014		2014-2015	
	Female	Male	Female	Male	Female	Male
0817 - MARKETING, SALES,SER ENT			100%			100%
0913 - BUSINESS OPER/ENTREPREN.	33%	67%	25%	63%	60%	40%
0914 - OFFICE MANAGEMENT	92%	8%	87%	13%	87%	13%
0916 - BUSINESS MANAGEMENT	68%	32%	66%	34%	60%	40%
0919 - OFFICE MGMT-MEDICAL	90%	10%	91%	9%	96%	4%
0926 - OFFICE SUPPORT-TECH. CER	100%		50%	50%		
0935 - ACCOUNTING OPER-TAX PREP	100%		83%	17%	50%	50%
0943 - ACCOUNTING TECH MGMT	92%	8%	84%	16%	81%	19%
0979 - TELEVISION STUDIO PROD	67%	33%	29%	71%	44%	56%
2059 - BUSINESS ADMINISTRATION	55%	45%	57%	43%	55%	45%
2062 - PARALEGAL-LEGAL ASST	82%	18%	85%	15%	81%	19%
2084 - ACCOUNTING TECHNOLOGY	75%	25%	76%	24%	72%	28%
2221 - INDUSTRIAL MGMT TECH		100%		100%		100%
2228 - OFFICE ADM-MED SYSTEMS	91%	9%	90%	10%	95%	5%
2229 - OFFICE ADMINISTRATION	98%	2%	96%	4%	99%	1%

Blank cells or missing years indicate no enrollment. Excludes individuals whose gender is not reported.

Major	2012-2013		2013-2014		2014-2015	
	Female	Male	Female	Male	Female	Male
Daytona State College	60%	40%	59%	41%	60%	40%

Race / Ethnicity by Program 2012-13

	Headcount	Amer Indian/ Alaska Native	Asian	Black or African Amer	Hispanic	Nat Hawaiian Pacific Islander	2 or More Races	White
0913 - BUSINESS OPER/ ENTREPREN.	6				17%			83%
0914 - OFFICE MANAGEMENT	24			29%	8%			63%
0916 - BUSINESS MANAGEMENT	44			23%	7%			70%
0919 - OFFICE MGMT-MEDICAL	30			10%	17%			73%
0926 - OFFICE SUPPORT-TECH.	1							100%
0935 - ACCOUNTING OPER-TAX PREP	4							100%
0943 - ACCOUNTING TECH MGMT	24		8%	17%	17%			58%
0979 - TELEVISION STUDIO PROD	3							67%
2059 - BUSINESS ADMINISTRATION	243		3%	21%	12%		1%	61%
2062 - PARALEGAL-LEGAL ASST	140			15%	8%	1%	1%	74%
2084 - ACCOUNTING TECHNOLOGY	120		2%	13%	12%			73%
2221 - INDUSTRIAL MGMT TECH	9				22%			67%
2228 - OFFICE ADM-MED SYSTEMS	23			13%	9%			78%
2229 - OFFICE ADMINISTRATION	48		2%	19%	13%		2%	65%
Total All Programs	705		2%	17%	11%	0.1%	1%	68%

Excludes individuals whose race / ethnicity is not reported.
Blank cells or missing years indicate no enrollment.

Race / Ethnicity by Program 2013-14

	Headcount	Amer Indian/ Alaska Native	Asian	Black or African Amer	Hispanic	Nat Hawaiian Pacific Islander	2 or More Races	White
0817 - MARKETING, SALES, SER ENT	1							100%
0913 - BUSINESS OPER/ ENTREPREN.	8		13%					63%
0914 - OFFICE MANAGEMENT	23			26%	4%			70%
0916 - BUSINESS MANAGEMENT	41	2%	2%	17%	2%			73%
0919 - OFFICE MGMT-MEDICAL	32			13%	9%			78%
0926 - OFFICE SUPPORT-TECH.	2				50%			50%
0935 - ACCOUNTING OPER-TAX PREP	6				25%		25%	50%
0943 - ACCOUNTING TECH MGMT	25			12%	16%		4%	68%
0979 - TELEVISION STUDIO PROD	7			14%	14%			71%
2059 - BUSINESS ADMINISTRATION	277		1%	23%	12%	1%	1%	61%
2062 - PARALEGAL-LEGAL ASST	143		1%	15%	9%	1%	1%	71%
2084 - ACCOUNTING TECHNOLOGY	102		1%	7%	17%			75%
2221 - INDUSTRIAL MGMT TECH	12			17%	8%			75%
2228 - OFFICE ADM-MED SYSTEMS	42	2%		14%	14%		5%	64%
2229 - OFFICE ADMINISTRATION	56	2%	2%	18%	9%		2%	68%
Total All Programs	760	0.4%	1%	17%	11%	1%	1%	67%

Excludes individuals whose race / ethnicity is not reported.
Blank cells or missing years indicate no enrollment.

Race / Ethnicity by Program 2014-15

	Headcount	Amer Indian/ Alaska Native	Asian	Black or African Amer	Hispanic	Nat Hawaiian Pacific Islander	2 or More Races	White
0817 - MARKETING, SALES, SER ENT	1				100%			
0913 - BUSINESS OPER/ ENTREPREN.	5			20%				80%
0914 - OFFICE MANAGEMENT	23	4%		13%	9%			74%
0916 - BUSINESS MANAGEMENT	57		2%	28%	9%			60%
0919 - OFFICE MGMT-MEDICAL	28		4%	4%	18%			75%
0935 - ACCOUNTING OPER-TAX PREP	4				25%		25%	50%
0943 - ACCOUNTING TECH MGMT	21		5%	5%	24%		5%	62%
0979 - TELEVISION STUDIO PROD	9	11%		11%	11%			67%
2059 - BUSINESS ADMINISTRATION	349		0.3%	19%	16%		2%	61%
2062 - PARALEGAL-LEGAL ASST	140		1%	14%	11%		2%	69%
2084 - ACCOUNTING TECHNOLOGY	104		4%	12%	15%			64%
2221 - INDUSTRIAL MGMT TECH	10			30%	20%			50%
2228 - OFFICE ADM-MED SYSTEMS	40	3%	3%	15%	15%		3%	63%
2229 - OFFICE ADMINISTRATION	71		3%	18%	8%		1%	69%
Total All Programs	843	0.4%	1%	17%	14%		2%	64%
DSC		0.5%	2%	14%	13%	0.2%	2%	67%

Excludes individuals whose race / ethnicity is not reported.
Blank cells or missing years indicate no enrollment.

Source: IR Program Assessment Data

Graduates in Major

Major	2012-2013	2013-2014	2014-2015
0913 - BUSINESS OPER/ENTREPREN.	11	14	70
0926 - OFFICE SUPPORT-TECH. CER	71	51	41
0916 - BUSINESS MANAGEMENT	42	19	39
2062 - PARALEGAL-LEGAL ASST	18	13	21
2059 - BUSINESS ADMINISTRATION	11	13	20
0979 - TELEVISION STUDIO PROD	8	24	19
0914 - OFFICE MANAGEMENT	34	24	15
0935 - ACCOUNTING OPER-TAX PREP	23	19	15
0943 - ACCOUNTING TECH MGMT	31	29	11
2084 - ACCOUNTING TECHNOLOGY	19	20	8
2229 - OFFICE ADMINISTRATION	5	5	7
0817 - MARKETING, SALES,SER ENT	1	3	6
0919 - OFFICE MGMT-MEDICAL	8	9	6
2228 - OFFICE ADM-MED SYSTEMS	1		2
2221 - INDUSTRIAL MGMT TECH	4	3	1
Total	287	246	281

Blank cells or missing years indicate no graduates.

Graduation Rates (1 of 2)

Major	Fall Cohort Year	# in Cohort	150% Graduates	150% Graduation Rate	200% Graduates	200% Graduation Rate
0817- Sales- Entrepreneurship	2012	0				
	2013	1	0	0.0%	0	0.0%
	2014	0				
0913- Business Operations- Entrepreneurship	2012	4	0	0.0%	0	0.0%
	2013	4	0	0.0%	0	0.0%
	2014	4	1	25.0%	1	25.0%
0914- Office Management	2012	7	2	28.6%	2	28.6%
	2013	6	1	16.7%	1	16.7%
	2014	10	1	10.0%	1	10.0%
0916- Business Management	2012	22	4	18.2%	6	27.3%
	2013	19	2	10.5%	3	15.8%
	2014	30	6	20.0%	6	20.0%
0919- Office Management (Medical Option)	2012	17	1	5.9%	3	17.6%
	2013	13	2	15.4%	3	23.1%
	2014	15	1	6.7%	1	6.7%
0926- Office Support	2012	0				
	2013	0				
	2014	0				
0935- Accounting Technology Operations- Tax Prep	2012	1	0	0.0%	0	0.0%
	2013	2	2	100.0%	2	100.0%
	2014	2	0	0.0%	0	0.0%
0943- Accounting Applications/ Computerized	2012	8	4	50.0%	5	62.5%
	2013	4	0	0.0%	0	0.0%
	2014	8	0	0.0%	0	0.0%

Red less than College average (150%- 44.8%, 200%- 49.23%)

Fall terms include prior Summer term enrollment in major.

Source: IR Program Assessment Data

Graduation Rates (2 of 2)

Major	Fall Cohort Year	# in Cohort	150% Graduates	150% Graduation Rate	200% Graduates	200% Graduation Rate
0979- Television Production	2012	1	1	100.0%	1	100.0%
	2013	7	4	57.1%	5	71.4%
	2014	4	0	0.0%	0	0.0%
2059- Business Administration	2010	92	7	7.6%	8	8.7%
	2011	106	5	4.7%	6	5.7%
	2012	76	4	5.3%	4	5.3%
2062- Paralegal Studies	2010	39	4	10.3%	5	12.8%
	2011	76	14	18.4%	16	21.1%
	2012	44	10	22.7%	10	22.7%
2084- Accounting Technology	2010	43	13	30.2%	13	30.2%
	2011	62	14	22.6%	15	24.2%
	2012	39	11	28.2%	11	28.2%
2221- Industrial Management	2010	N/A				
	2011	4	3	75.0%	3	75.0%
	2012	5	1	20.0%	1	20.0%
2228 - Office Administration- (Medical Systems Option)	2010	N/A				
	2011	16	0	0%	0	0%
	2012	6	0	0%	0	0%
2229- Office Administration	2010	N/A				
	2011	15	2	13.3%	2	13.3%
	2012	19	6	31.6%	6	31.6%

Less than College average (150%- 44.8%, 200%- 49.23%)

Fall terms include prior Summer term enrollment in major.

Retention Rates (1 of 2)

Program and Cohort Year		Registered	Exclusions	Adjusted Cohort	Retained by DSC		Retained by Program		DSC Total Retained
					N	%	N	%	
0817 MARKETING, SALES, SER ENT	2013	1		1	1	100%		0%	100%
0913 BUSINESS OPER/ENTREPREN.	2011	3		3	1	33%		0%	33%
	2012	3		3	1	33%		0%	33%
	2013	3		3	1	33%		0%	33%
0914 OFFICE MANAGEMENT	2011	16	2	14	1	7%	6	43%	50%
	2012	17	5	12	2	17%	2	17%	33%
	2013	10	2	8	2	25%	5	63%	88%
0916 BUSINESS MANAGEMENT	2011	30	2	28	6	21%	2	7%	29%
	2012	28	3	25	5	20%	5	20%	40%
	2013	30	6	24	5	21%	2	8%	29%
0919 OFFICE MGMT-MEDICAL	2011	14		14	3	21%	2	14%	36%
	2012	19	2	17	3	18%	8	47%	65%
	2013	26	5	21	3	14%	9	43%	57%
0926 OFFICE SUPPORT-TECH. CER	2011	2		2		0%		0%	0%
	2012	1	1	0		NA		NA	N/A
0935 ACCOUNTING OPER-TAX PREP	2011	2		2		0%		0%	0%
	2012	2		2		0%	1	50%	50%
	2013	3	2	1		0%		0%	0%

Less than College average (FT- 60.48%, PT- 52.08%)

Registered - Includes all students enrolled in the fall term of the specified year, with the specified program as their primary major.

Exclusions - Includes students who are deceased or graduated fall of the specified year or the following spring or summer.

Not retained - Students who were not registered the following fall term.

Retained by DSC - Students who were still registered at DSC the following fall but with a different primary major.

Retained by Program - Students who were registered the following fall with the same primary major.

Source: IR Program Assessment Data

Retention Rates (2 of 2)

Program and Cohort Year		Registered	Exclusions	Adjusted Cohort	Retained by DSC		Retained by Program		DSC Total Retained
					N	%	N	%	
0943 ACCOUNTING TECH MGMT	2011	33	14	19	3	16%	6	32%	47%
	2012	20	7	13	1	8%	6	46%	54%
	2013	16	6	10		0%	2	20%	20%
0979 TELEVISION STUDIO PROD	2012	1		1	1	100%		0%	100%
	2013	7		7	1	14%	4	57%	71%
2059 BUSINESS ADMINISTRATION	2011	173	8	165	22	13%	62	38%	51%
	2012	163	9	154	24	16%	48	31%	47%
	2013	193	13	180	30	17%	60	33%	50%
2062 PARALEGAL-LEGAL ASST	2011	103	11	92	11	12%	38	41%	53%
	2012	93	17	76	6	8%	38	50%	58%
	2013	103	12	91	8	9%	54	59%	68%
2084 ACCOUNTING TECHNOLOGY	2011	119	23	96	13	14%	32	33%	47%
	2012	88	14	74	10	14%	28	38%	51%
	2013	73	15	58	7	12%	23	40%	52%
2221 INDUSTRIAL MGMT TECH	2011	4		4	2	50%		0%	50%
	2012	7	1	6	1	17%	4	67%	83%
	2013	7	3	4		0%	2	50%	50%
2228 OFFICE ADM-MED SYSTEMS	2011	14		14	5	36%	4	29%	64%
	2012	15	1	14	3	21%	4	29%	50%
	2013	30		30	3	10%	8	27%	37%
2229 OFFICE ADMINISTRATION	2011	15		15	1	7%	7	47%	53%
	2012	34	3	31	3	10%	17	55%	65%
	2013	51	6	45	5	11%	27	60%	71%

Less than College average (FT- 60.48%, PT- 52.08%)

Registered - Includes all students enrolled in the fall term of the specified year, with the specified program as their primary major.

Exclusions - Includes students who are deceased or graduated fall of the specified year or the following spring or summer.

Not retained - Students who were not registered the following fall term.

Retained by DSC - Students who were still registered at DSC the following fall but with a different primary major.

Retained by Program - Students who were registered the following fall with the same primary major.

Source: IR Program Assessment Data

Average Class Size by Course (1 of 3)

Major and Associated Courses		2012-2013		2013-2014		2014-2015	
		Sections	Avg. Size	Sections	Avg. Size	Sections	Avg. Size
0979 TELEVISION STUDIO PROD	RTV1000	2	18	2	17	2	16
	RTV1201	2	11	2	16	2	12
	RTV2222	1	7	2	12	2	10
	RTV2600					1	10
	Major	5	13	6	15	7	12
2059 BUSINESS ADMINISTRATION	ECO2013	33	31	28	34	28	32
	ECO2023	20	32	22	33	23	31
	GEB1011	13	30	11	32	9	36
	GEB2351	2	22	1	12		
	GEB2430	24	31	19	35	23	34
	ISM2000	17	23	15	26	13	30
	MAN2021	6	34	7	32	5	34
	MAR2011	3	33	3	32	3	32
	MAR2101	1	34	3	35	4	30
	MAR2321	1	35	1	35	1	39
	MAR2720	1	18	1	10		
	MKA2021	1	27	1	18	1	12
	MNA2161	2	29	2	33	2	35
	MNA2345	2	31	2	39	2	37
	SBM2000	3	35	4	27	4	35
Major	129	30	120	32	118	32	

Average Class Size by Course (2 of 3)

Major and Associated Courses		2012-2013		2013-2014		2014-2015	
		Sections	Avg. Size	Sections	Avg. Size	Sections	Avg. Size
2062 PARALEGAL- LEGAL ASST	BUL2241	11	25	8	29	10	25
	BUL2242	3	24	3	23	3	18
	OST1141	6	27	6	34	5	32
	OST1435	2	19	3	28	2	32
	PLA1003	3	15	3	21	2	32
	PLA1103	2	19	2	15	1	12
	PLA1610	1	29	1	28	1	23
	PLA1800	1	26	1	21	1	24
	PLA2114	2	19	2	14	2	11
	PLA2200	1	29	1	24	1	20
	PLA2303	2	21	2	28	2	18
	PLA2460	2	26	2	19	2	19
	PLA2600	1	25	1	23	1	17
	PLA2763	2	24	1	22	1	36
	PLA2880	10	25	8	22	4	28
Major	49	24	44	25	38	25	
2084 ACCOUNTING TECHNOLOGY	ACG2021					11	35
	ACG2022	12	33	14	34	4	27
	ACG2071	7	33	7	35	9	28
	APA1111	4	28	3	35	3	25
	APA1121	3	12	2	21	2	18
	APA1711	4	26	3	34	3	26
	FIN1100	4	29	4	38	6	34
	FIN2000	5	30	4	38	4	35
	TAX2000	3	24	2	24	2	29
	Major	42	29	39	34	44	30

To prevent data from skewing, the following instructional methods are excluded: Labs associated with lectures, Private/Performance, Clinicals, Co-op, DIS, Field trips and Internships.

Source: IR Program Assessment Data

Average Class Size by Course (3 of 3)

Major and Associated Courses		2012-2013		2013-2014		2014-2015	
		Sections	Avg. Size	Sections	Avg. Size	Sections	Avg. Size
2228 OFFICE ADM-MED SYSTEMS	OST2461	2	9	2	9	2	12
	Major	2	9	2	9	2	12
2229 OFFICE ADMINISTRATION	OST1100	3	17	3	22	3	21
	OST1110	3	9	3	12	3	12
	OST1330	3	30	3	33	3	27
	OST1711	3	13	2	12	2	11
	OST1760	2	5	2	2	1	1
	OST2336	2	16	1	36	2	30
	OST2401	3	26	3	23	3	23
	OST2431	2	6	2	14	2	19
	OST2501	2	31	1	41	1	38
	OST2713	2	15	2	12	2	12
	OST2828	1	31	1	22	1	26
	OST2852	1	9	1	15	1	13
	OST2905	1	1				
	QMB1001	2	21	1	14	3	31
	Major	30	17	25	19	27	21
Total		257	27	236	29	236	29

Average Class Size by Course – Multiple Methods Only (1 of 3)

Major and Associated Courses			2012-2013		2013-2014		2014-2015	
			Sections	Avg. Size	Sections	Avg. Size	Sections	Avg. Size
2059 BUSINESS ADMINISTRATION	ECO2013	Hybrid	17	29	15	34	15	29
		Lecture	4	29	1	47	1	36
		Online	12	34	12	32	12	36
		Course	33	31	28	34	28	32
	ECO2023	Hybrid	9	28	6	34	9	26
		Lecture	2	28	3	33	2	37
		Online	9	36	13	32	12	33
		Course	20	32	22	33	23	31
	GEB1011	Hybrid	5	29	3	29	3	33
		Online	8	30	8	33	6	37
		Course	13	30	11	32	9	36
	GEB2430	Hybrid	7	31	4	37	7	28
		Online	17	31	15	34	16	37
		Course	24	31	19	35	23	34
	ISM2000	Hybrid	4	20	2	27	2	31
		Online	13	24	13	26	11	30
		Course	17	23	15	26	13	30
	MAN2021	Hybrid	1	25	1	26		
		Online	5	36	6	33	5	34
		Course	6	34	7	32	5	34

To prevent data from skewing, the following instructional methods are excluded: Labs associated with lectures, Private/Performance, Clinicals, Co-op, DIS, Field trips and Internships.

Average Class Size by Course – Multiple Methods Only (2 of 3)

Major and Associated Courses			2012-2013		2013-2014		2014-2015		
			Sections	Avg. Size	Sections	Avg. Size	Sections	Avg. Size	
2062 PARALEGAL- LEGAL ASST	BUL2241	Hybrid	3	22	2	24	4	12	
		Online	8	26	6	31	6	34	
		Course	11	25	8	29	10	25	
	OST1435	Lecture	2	19					
		Online			3	28	2	32	
		Course	2	19	3	28	2	32	
	PLA1003	Hybrid	3	15	1	19			
		Online			2	22	2	32	
		Course	3	15	3	21	2	32	
	PLA2303	Hybrid	2	21					
		Online			2	28	2	18	
		Course	2	21	2	28	2	18	
	PLA2880	Hybrid	3	24	3	17			
		Online	7	26	5	25	4	28	
		Course	10	25	8	22	4	28	
	2084 ACCOUNTING TECHNOLOGY	ACG2021	Hybrid					4	34
			Online					7	36
			Course					11	35
ACG2022		Hybrid	5	30	4	35			
		Online	7	34	10	33	4	27	
		Course	12	33	14	34	4	27	
ACG2071		Hybrid	2	31	2	25	3	21	
		Online	5	35	5	39	6	32	
		Course	7	33	7	35	9	28	

To prevent data from skewing, the following instructional methods are excluded: Labs associated with lectures, Private/Performance, Clinicals, Co-op, DIS, Field trips and Internships.


Average Class Size by Course – Multiple Methods Only (3 of 3)

Major and Associated Courses			2012-2013		2013-2014		2014-2015	
			Sections	Avg. Size	Sections	Avg. Size	Sections	Avg. Size
2228 OFFICE ADM-MED SYSTEMS	OST2461	Hybrid	2	9	1	7		
		Online			1	11	2	12
		Course	2	9	2	9	2	12
2229 OFFICE ADMINISTRATION	OST1100	Hybrid	2	14	2	25	2	19
		Online	1	24	1	16	1	25
		Course	3	17	3	22	3	21
	OST1110	Hybrid	2	10	2	13	2	15
		Online	1	8	1	10	1	7
		Course	3	9	3	12	3	12
	OST2431	Hybrid	2	6	1	8		
		Online			1	20	2	19
		Course	2	6	2	14	2	19
	QMB1001	Hybrid					1	21
		Online	2	21	1	14	2	36
		Course	2	21	1	14	3	31

To prevent data from skewing, the following instructional methods are excluded: Labs associated with lectures, Private/Performance, Clinicals, Co-op, DIS, Field trips and Internships.

Course Success Rates (1 of 3)

Major	Course	2012-2013		2013-2014		2014-2015	
		Attempted	% Successful	Attempted	% Successful	Attempted	% Successful
0979 TELEVISION STUDIO PROD	RTV1000	36	100%	34	94%	32	78%
	RTV1000L	36	100%	34	94%	32	78%
	RTV1201	21	95%	31	97%	23	96%
	RTV1201L	21	95%	31	97%	23	96%
	RTV2222	7	100%	24	100%	20	95%
	RTV2222L	7	100%	24	100%	20	95%
	RTV2600					10	100%
	RTV2600L					10	100%
	Major	128	98%	178	97%	170	89%
2059 BUSINESS ADMINISTRATION	ECO2013	1020	79%	940	79%	901	77%
	ECO2023	633	78%	722	80%	703	83%
	GEB1011	385	72%	353	76%	324	76%
	GEB2351	44	70%	12	100%		
	GEB2430	746	80%	663	79%	784	80%
	GEB2949	1	100%				
	ISM2000	393	71%	393	73%	388	77%
	MAN2021	204	71%	223	78%	168	80%
	MAR2011	99	70%	97	75%	97	81%
	MAR2101	34	94%	105	80%	120	77%
	MAR2321	35	94%	35	83%	39	79%
	MAR2720	18	89%	10	50%		
	MKA2021	27	96%	18	67%	31	84%
	MNA2161	57	89%	66	80%	70	76%
	MNA2345	62	90%	77	91%	74	95%
	MNA2949	2	100%	2	100%		
	SBM2000	104	73%	109	81%	140	80%
	Major	3864	77%	3825	78%	3839	79%

 Indicates more than 5% decrease from prior year.

Source: IR Program Assessment Data

Course Success Rates (2 of 3)

Major	Course	2012-2013		2013-2014		2014-2015	
		Attempted	% Successful	Attempted	% Successful	Attempted	% Successful
2062 PARALEGAL- LEGAL ASST	BUL2241	276	72%	234	75%	254	77%
	BUL2242	71	79%	69	83%	53	77%
	OST1141	161	86%	202	85%	159	79%
	OST1435	38	92%	84	90%	64	78%
	PLA1003	44	86%	63	76%	64	70%
	PLA1103	38	89%	29	86%	12	92%
	PLA1610	29	93%	28	96%	23	96%
	PLA1800	26	96%	21	90%	24	92%
	PLA2114	37	97%	28	96%	21	100%
	PLA2200	29	93%	24	88%	20	95%
	PLA2303	42	90%	55	87%	37	86%
	PLA2460	52	81%	37	84%	38	84%
	PLA2600	25	96%	23	91%	17	82%
	PLA2763	47	87%	22	91%	36	86%
	PLA2880	252	66%	179	74%	112	71%
PLA2949	1	100%	3	100%	1	100%	
	Major	1168	79%	1101	82%	935	79%
2084 ACCOUNTING TECHNOLOGY	ACG2021					388	68%
	ACG2022	392	78%	469	76%	109	87%
	ACG2071	234	85%	243	84%	254	85%
	ACG2949			1	100%		
	APA1111	110	60%	105	58%	76	64%
	APA1121	37	73%	41	73%	36	69%
	APA1711	103	61%	103	78%	77	68%
	FIN1100	115	76%	152	85%	205	74%
	FIN2000	149	62%	152	66%	139	78%
	TAX2000	73	75%	48	69%	57	72%
		Major	1213	74%	1314	76%	1341

■ Indicates more than 5% decrease from prior year.

Source: IR Program Assessment Data

Course Success Rates (3 of 3)

Major	Course	2012-2013		2013-2014		2014-2015	
		Attempted	% Successful	Attempted	% Successful	Attempted	% Successful
2228 OFFICE ADM- MED SYSTEMS	OST2461	17	88%	18	94%	24	92%
	Major	17	88%	18	94%	24	92%
2229 OFFICE ADMINISTRATION	OST1100	51	86%	66	94%	62	89%
	OST1110	27	96%	35	91%	37	81%
	OST1330	91	86%	100	73%	80	71%
	OST1711	40	73%	23	87%	22	86%
	OST1760	10	70%	4	100%	1	100%
	OST2336	31	90%	36	89%	60	83%
	OST2401	77	96%	68	85%	70	90%
	OST2431	12	83%	28	89%	38	95%
	OST2501	63	95%	41	85%	38	87%
	OST2713	30	87%	24	100%	24	75%
	OST2828	31	71%	22	82%	26	88%
	OST2852	9	89%	15	100%	13	85%
	OST2905	1	100%				
	OST2949	1	100%	1	100%		
	QMB1001	41	66%	14	64%	93	63%
	Major	515	86%	477	86%	564	81%
Total	6905	78%	6913	80%	6873	79%	

■ Indicates more than 5% decrease from prior year.

Course Success Rates by Campus – Multiple Campuses Only (1 of 2)

Major, Associated Courses and Instructional Method			2012-2013		2013-2014		2014-2015	
			Attempted	% Successful	Attempted	% Successful	Attempted	% Successful
2059 BUSINESS ADMINISTRATION	ECO2013	Daytona	279	79%	202	78%	207	76%
		Deland	104	82%	173	82%	90	74%
		Deltona	63	81%	46	72%	58	67%
		Flagler/Palm Cst	115	81%	80	85%	94	77%
		New Smyrna Beach	51	76%	57	86%	23	74%
		Course	612	80%	558	80%	472	75%
	ECO2023	Daytona	174	76%	202	77%	163	84%
		Deland	56	86%	68	79%	63	79%
		Deltona	46	61%			20	80%
		Flagler/Palm Cst			33	73%	50	66%
		New Smyrna Beach	29	69%			13	85%
		Course	305	75%	303	77%	309	80%
	GEB1011	Daytona	93	72%	68	66%	75	72%
		Deland	50	70%	20	75%	25	84%
		Course	143	71%	88	68%	100	75%
	GEB2430	Daytona	118	77%	90	71%	106	78%
		Deland	69	71%	58	62%	12	50%
		Deltona	17	71%			19	84%
		Flagler/Palm Cst	16	69%			38	84%
		New Smyrna Beach					20	90%
		Course	220	74%	148	68%	195	79%
	ISM2000	Daytona	64	75%	54	78%	62	76%
		Deland	14	64%				
		Course	78	73%	54	78%	62	76%
	MNA2949	Adv Tech College			2	100%		
		Daytona	2	100%				
		Course	2	100%	2	100%		

■ Indicates more than 5% difference between campuses

Source: IR Program Assessment Data

Course Success Rates by Campus – Multiple Campuses Only (2 of 2)

Major, Associated Courses and Instructional Method			2012-2013		2013-2014		2014-2015	
			Attempted	% Successful	Attempted	% Successful	Attempted	% Successful
2062 PARALEGAL- LEGAL ASST	BUL2241	Daytona	53	62%	47	85%	23	74%
		Deland	12	75%				
		Deltona					9	56%
		Flagler/Palm Cst					10	40%
		New Smyrna Beach					6	83%
	Course	65	65%	47	85%	48	65%	
	PLA2880	Daytona	52	69%	45	73%		
		Deland	21	81%	7	71%		
		Course	73	73%	52	73%		
	2084 ACCOUNTING TECHNOLOGY	ACG2022	Daytona	130	80%	117	77%	
Deland			21	71%	22	68%		
Course			151	79%	139	76%		
ACG2071		Daytona	61	75%	49	82%	49	88%
		Deland					14	93%
		Course	61	75%	49	82%	63	89%

Course Success Rates by Instructional Method – Multiple Methods Only (1 of 3)

Major, Associated Courses and Instructional Method			2012-2013		2013-2014		2014-2015	
			Attempted	% Successful	Attempted	% Successful	Attempted	% Successful
2059 BUSINESS ADMINISTRATION	ECO2013	Hybrid	498	80%	511	81%	436	74%
		Lecture	114	77%	47	77%	36	81%
		Online	408	78%	382	77%	429	79%
		Course	1020	79%	940	79%	901	77%
	ECO2023	Hybrid	250	75%	203	74%	235	78%
		Lecture	55	75%	100	84%	74	86%
		Online	328	80%	419	82%	394	86%
		Course	633	78%	722	80%	703	83%
	GEB1011	Hybrid	143	71%	88	68%	100	75%
		Online	242	72%	265	78%	224	76%
		Course	385	72%	353	76%	324	76%
	GEB2430	Hybrid	220	74%	148	68%	195	79%
		Online	526	83%	515	82%	589	80%
		Course	746	80%	663	79%	784	80%
	ISM2000	Hybrid	78	73%	54	78%	62	76%
		Online	315	70%	339	73%	326	77%
		Course	393	71%	393	73%	388	77%
	MAN2021	Hybrid	25	68%	26	65%		
		Online	179	72%	197	79%	168	80%
		Course	204	71%	223	78%	168	80%
	MKA2021	Online	27	96%	18	67%	12	83%
		Open Lab					19	84%
		Course	27	96%	18	67%	31	84%

Course Success Rates by Instructional Method – Multiple Methods Only (2 of 3)

Major, Associated Courses and Instructional Method			2012-2013		2013-2014		2014-2015	
			Attempted	% Successful	Attempted	% Successful	Attempted	% Successful
2062 PARALEGAL- LEGAL ASST	BUL2241	Hybrid	65	65%	47	85%	48	65%
		Online	211	74%	187	73%	206	80%
		Course	276	72%	234	75%	254	77%
	OST1435	Lecture	38	92%				
		Online			84	90%	64	78%
		Course	38	92%	84	90%	64	78%
	PLA1003	Hybrid	44	86%	19	89%		
		Online			44	70%	64	70%
		Course	44	86%	63	76%	64	70%
	PLA2303	DIS					1	100%
		Hybrid	42	90%				
		Online			55	87%	36	86%
		Course	42	90%	55	87%	37	86%
	PLA2880	Hybrid	73	73%	52	73%		
		Online	179	64%	127	75%	112	71%
Course		252	66%	179	74%	112	71%	
2084 ACCOUNTING TECHNOLOGY	ACG2021	Hybrid					134	75%
		Online					254	64%
		Course					388	68%
	ACG2022	Hybrid	151	79%	139	76%		
		Online	241	77%	330	76%	109	87%
		Course	392	78%	469	76%	109	87%
	ACG2071	Hybrid	61	75%	49	82%	63	89%
		Online	173	88%	194	85%	191	83%
		Course	234	85%	243	84%	254	85%

Course Success Rates by Instructional Method – Multiple Methods Only (3 of 3)

Major, Associated Courses and Instructional Method			2012-2013		2013-2014		2014-2015	
			Attempted	% Successful	Attempted	% Successful	Attempted	% Successful
2228 OFFICE ADM- MED SYSTEMS	OST2461	Hybrid	17	88%	7	100%		
		Online			11	91%	24	92%
		Course Total	17	88%	18	94%	24	92%
2229 OFFICE ADMINISTRATION	OST1100	Hybrid	27	89%	50	92%	37	86%
		Online	24	83%	16	100%	25	92%
		Course Total	51	86%	66	94%	62	89%
	OST1110	Hybrid	19	95%	25	96%	30	80%
		Online	8	100%	10	80%	7	86%
		Course Total	27	96%	35	91%	37	81%
	OST2431	Hybrid	12	83%	8	88%		
		Online			20	90%	38	95%
		Course Total	12	83%	28	89%	38	95%
	OST2501	DIS	2	100%				
		Online	61	95%	41	85%	38	87%
		Course Total	63	95%	41	85%	38	87%
	QMB1001	Hybrid					21	52%
		Online	41	66%	14	64%	72	67%
		Course Total	41	66%	14	64%	93	63%

Course Success Rates by Multiple Session/Sub-session Only (1 of 9)

Major, Associated Courses and Sub-session				2012-2013		2013-2014		2014-2015	
				Attempted	% Successful	Attempted	% Successful	Attempted	% Successful
0979 TELEVISION STUDIO PROD	RTV1000	FA	Full term	16	100%	21	90%	17	76%
		SP	Full term	20	100%	13	100%	15	80%
		Course		36	100%	34	94%	32	78%
	RTV1201	FA	Full term	7	100%	12	100%	8	100%
		SP	Full term	14	93%	19	95%	15	93%
		Course		21	95%	31	97%	23	96%
	RTV2222	FA	Full term			12	100%	13	92%
		SP	Full term	7	100%	12	100%	7	100%
		Course		7	100%	24	100%	20	95%
	2059 BUSINESS ADMINISTRATION	ECO2013	FA	A term	161	81%	166	86%	98
B term				60	75%			92	68%
Full term				234	78%	283	79%	206	77%
Session			455	78%	449	82%	396	76%	
SP			A term	74	88%	52	65%	116	73%
			B term	66	65%	71	70%	99	77%
			Full term	248	80%	261	77%	162	78%
		Session		388	79%	384	74%	377	76%
SU		Full term	177	82%	107	84%	128	84%	
Course		1020	79%	940	79%	901	77%		
		FA	A term	30	73%	32	81%	36	69%
			Full term	142	66%	120	68%	96	73%
			Session		172	67%	152	71%	132
		SP	Full term	155	72%	131	72%	115	78%
		SU	Full term	58	86%	70	93%	77	78%
	Course		385	72%	353	76%	324	76%	

Indicates more than 5% difference between sessions or sub-sessions.

Source: IR Program Assessment Data

Course Success Rates by Multiple Session/Sub-session Only (2 of 9)

Major, Associated Courses and Sub-session				2012-2013		2013-2014		2014-2015		
				Attempted	% Successful	Attempted	% Successful	Attempted	% Successful	
2059 BUSINESS ADMINISTRATION	GEB2351	FA	Full term	27	74%	12	100%			
		SP	Full term	17	65%					
		Course		44	70%	12	100%			
	GEB2430	FA	A term		16	69%			37	86%
			B term		41	83%	48	88%	76	67%
			Full term		233	75%	226	75%	184	79%
			Session		290	76%	274	77%	297	77%
		SP	A term		59	92%	69	86%	78	86%
			B term		66	77%	47	79%	77	70%
			Full term		189	81%	162	74%	231	82%
			Session		314	82%	278	78%	386	80%
		SU	Full term		142	86%	111	86%	101	86%
		Course			746	80%	663	79%	784	80%
	ISM2000	FA	B term		23	78%	34	79%	57	60%
			Full term		146	67%	112	73%	109	79%
			Session		169	69%	146	75%	166	72%
		SP	B term		47	77%	43	95%	34	65%
			Full term		132	72%	119	72%	128	84%
			Session		179	73%	162	78%	162	80%
		SU	Full term		45	69%	85	61%	60	83%
		Course			393	71%	393	73%	388	77%
	MAN2021	FA	A term		39	72%	29	97%	35	86%
			Full term		64	67%	59	73%	36	72%
Session				103	69%	88	81%	71	79%	
SP		Full term		72	71%	80	70%	67	75%	
SU		Full term		29	79%	55	84%	30	97%	
Course			204	71%	223	78%	168	80%		

Indicates more than 5% difference between sessions or sub-sessions.

Course Success Rates by Multiple Session/Sub-session Only (3 of 9)

Major, Associated Courses and Sub-session				2012-2013		2013-2014		2014-2015	
				Attempted	% Successful	Attempted	% Successful	Attempted	% Successful
2059 BUSINESS ADMINISTRATION	MAR2011	FA	Full term	62	69%	58	78%	37	89%
		SP	Full term	37	70%	39	72%	38	79%
		SU	Full term					22	73%
		Course		99	70%	97	75%	97	81%
	MAR2101	FA	B term					20	65%
			Full term			38	71%	34	82%
			Session			38	71%	54	76%
		SP	B term	34	94%				
			Full term			33	79%	40	73%
		Session	34	94%	33	79%	40	73%	
		Course		34	94%	105	80%	120	77%
	MAR2321	SP	A term	35	94%				
			Full term			35	83%	39	79%
			Session	35	94%	35	83%	39	79%
		Course		35	94%	35	83%	39	79%
	MKA2021	FA	A term	27	96%				
			B term					19	84%
			Full term			18	67%		
		Session	27	96%	18	67%	19	84%	
		Course		27	96%	18	67%	31	84%
	MNA2161	FA	Full term	30	97%	34	79%	37	78%
		SP	B term	27	81%				
			Full term			32	81%	33	73%
Session			27	81%	32	81%	33	73%	
Course		57	89%	66	80%	70	76%		

Indicates more than 5% difference between sessions or sub-sessions.

Course Success Rates by Multiple Session/Sub-session Only (4 of 9)

Major, Associated Courses and Sub-session				2012-2013		2013-2014		2014-2015	
				Attempted	% Successful	Attempted	% Successful	Attempted	% Successful
2059 BUSINESS ADMINISTRATION	MNA2345	FA	A term	27	93%	30	83%	36	94%
		SP	A term	35	89%	47	96%	38	95%
		Course		62	90%	77	91%	74	95%
	MNA2949	FA	Full term			2	100%		
		SU	Full term	2	100%				
		Course		2	100%	2	100%		
	SBM2000	FA	Full term	33	70%	31	84%	37	89%
		SP	Full term	42	69%	45	76%	74	76%
		SU	Full term	29	83%	33	85%	29	79%
		Course		104	73%	109	81%	140	80%
2062 PARALEGAL-LEGAL ASST	BUL2241	FA	A term	29	69%				
			B term			32	72%	41	68%
			Full term	111	72%	56	82%	55	75%
		Session		140	71%	88	78%	96	72%
	SP	B term	21	43%	29	72%	38	92%	
		Full term	63	73%	59	64%	63	71%	
		Session		84	65%	88	67%	101	79%
	SU	Full term	52	85%	58	83%	57	81%	
	Course		276	72%	234	75%	254	77%	
	BUL2242	FA	Full term	22	68%	27	81%	16	75%
		SP	Full term	19	79%	24	79%	18	72%
		SU	Full term	30	87%	18	89%	19	84%
		Course		71	79%	69	83%	53	77%
OST1435	FA	Full term	20	90%	57	93%	28	89%	
	SP	Full term	18	94%	27	85%	36	69%	
	Course		38	92%	84	90%	64	78%	

Indicates more than 5% difference between sessions or sub-sessions.

Course Success Rates by Multiple Session/Sub-session Only (5 of 9)

Major, Associated Courses and Sub-session				2012-2013		2013-2014		2014-2015	
				Attempted	% Successful	Attempted	% Successful	Attempted	% Successful
2062 PARALEGAL- LEGAL ASST	OST1141	FA	A term	29	100%	46	96%	31	87%
			B term	37	84%	45	78%	37	68%
			Session	66	91%	91	87%	68	76%
		SP	A term			52	77%	35	83%
			B term	29	79%	28	86%	31	71%
			Full term	28	82%				
			Session	57	81%	80	80%	66	77%
	SU	Full term	38	84%	31	94%	25	92%	
	Course	161	86%	202	85%	159	79%		
	PLA1003	FA	Full term	28	89%	19	89%	33	76%
		SP	Full term	16	81%	44	70%	31	65%
		Course	44	86%	63	76%	64	70%	
	PLA1103	FA	Full term	20	90%	12	100%	12	92%
		SP	Full term	18	89%	17	76%		
		Course	38	89%	29	86%	12	92%	
	PLA2114	FA	Full term	20	95%	16	100%	11	100%
		SP	Full term	17	100%	12	92%	10	100%
		Course	37	97%	28	96%	21	100%	
	PLA2303	FA	Full term	42	90%	30	83%	23	83%
		SP	Full term					1	100%
		SU	Full term			25	92%	13	92%
		Course	42	90%	55	87%	37	86%	
	PLA2460	FA	Full term	29	79%	17	82%	21	95%
		SP	Full term	23	83%	20	85%	17	71%
		Course	52	81%	37	84%	38	84%	

Indicates more than 5% difference between sessions or sub-sessions.

Source: IR Program Assessment Data

Course Success Rates by Multiple Session/Sub-session Only (6 of 9)

Major, Associated Courses and Sub-session			2012-2013		2013-2014		2014-2015		
			Attempted	% Successful	Attempted	% Successful	Attempted	% Successful	
2062 PARALEGAL- LEGAL ASST	PLA2880	FA	B term	34	47%			15	60%
			Full term	71	70%	69	75%	33	73%
			Session	105	63%	69	75%	48	69%
		SP	A term	22	68%	15	87%		
			B term	22	45%				
			Full term	51	65%	50	64%	40	75%
		SU	Session	95	61%	65	69%	40	75%
			Full term	52	83%	45	80%	24	67%
Course			252	66%	179	74%	112	71%	
2084 ACCOUNTING TECHNOLOGY	ACG2021	FA	B term					35	51%
			Full term					181	69%
			Session					216	66%
		SP	B term					36	50%
			Full term					136	75%
			Session					172	70%
	Course							388	68%
	ACG2022	FA	B term			31	65%		
			Full term	158	73%	172	75%		
			Session	158	73%	203	73%		
		SP	Full term	151	75%	170	72%		
		SU	Full term	83	92%	96	89%	109	87%
	Course			392	78%	469	76%	109	87%
	ACG2071	FA	Full term	71	86%	81	77%	66	76%
			SP	Full term	100	78%	97	89%	117
SU			Full term	63	95%	65	86%	71	92%
Course			234	85%	243	84%	254	85%	

Indicates more than 5% difference between sessions or sub-sessions.

Source: IR Program Assessment Data

Course Success Rates by Multiple Session/Sub-session Only (7 of 9)

Major, Associated Courses and Sub-session				2012-2013		2013-2014		2014-2015	
				Attempted	% Successful	Attempted	% Successful	Attempted	% Successful
2084 ACCOUNTING TECHNOLOGY	APA1711	FA	Full term	26	46%	37	76%	25	56%
		SP	A term	27	78%	41	78%		
			B term	22	64%			35	71%
			Session	49	71%	41	78%	35	71%
		SU	Full term	28	57%	25	80%	17	76%
		Course			103	61%	103	78%	77
	FIN1100	FA	B term					18	61%
			Full term	37	81%	36	75%	72	63%
			Session	37	81%	36	75%	90	62%
		SP	A term	29	83%	83	90%	38	89%
			B term	22	59%			38	71%
			Session	51	73%	83	90%	76	80%
		SU	Full term	27	74%	33	82%	39	87%
		Course			115	76%	152	85%	205
	FIN2000	FA	B term	36	58%	34	71%	30	73%
			Full term	33	67%	37	59%	35	74%
			Session	69	62%	71	65%	65	74%
		SP	B term	27	48%	37	68%	35	83%
			Full term	26	77%	44	68%	39	82%
			Session	53	62%	81	68%	74	82%
		SU	Full term	27	59%				
		Course			149	62%	152	66%	139
	TAX2000	FA	Full term	25	68%	28	75%	31	74%
		SP	Full term	26	88%	20	60%	26	69%
		SU	Full term	22	68%				
		Course			73	75%	48	69%	57

Course Success Rates by Multiple Session/Sub-session Only (8 of 9)

Major, Associated Courses and Sub-session				2012-2013		2013-2014		2014-2015	
				Attempted	% Successful	Attempted	% Successful	Attempted	% Successful
2228 OFFICE ADM- MED SYSTEMS	OST2461	FA	Full term	11	91%	7	100%	14	93%
		SP	Full term	6	83%	11	91%	10	90%
		Course		17	88%	18	94%	24	92%
2229 OFFICE ADMINISTRATION	OST1100	FA	Full term	10	90%	22	91%	19	84%
		SP	Full term	17	88%	28	93%	18	89%
		SU	Full term	24	83%	16	100%	25	92%
		Course		51	86%	66	94%	62	89%
	OST1110	FA	Full term	10	100%	9	100%	18	83%
		SP	Full term	9	89%	16	94%	12	75%
		SU	Full term	8	100%	10	80%	7	86%
		Course		27	96%	35	91%	37	81%
	OST1330	FA	Full term	35	86%	37	59%	33	67%
		SP	Full term	36	81%	40	75%	30	70%
		SU	Full term	20	95%	23	91%	17	82%
		Course		91	86%	100	73%	80	71%
	OST1711	FA	Full term	17	71%	18	100%	13	77%
		SP	Full term	14	57%	5	40%	9	100%
		SU	Full term	9	100%				
		Course		40	73%	23	87%	22	86%
	OST1760	FA	Full term	7	71%	2	100%	1	100%
		SP	Full term	3	67%	2	100%		
		Course		10	70%	4	100%	1	100%
	OST2336	FA	Full term	16	94%	36	89%	37	89%
		SP	Full term					23	74%
		SU	Full term	15	87%				
		Course		31	90%	36	89%	60	83%

Indicates more than 5% difference between sessions or sub-sessions.

Source: IR Program Assessment Data

Course Success Rates by Multiple Session/Sub-session Only (9 of 9)

Major, Associated Courses and Sub-session				2012-2013		2013-2014		2014-2015	
				Attempted	% Successful	Attempted	% Successful	Attempted	% Successful
2229 OFFICE ADMINISTRATION	OST2401	FA	Full term	31	97%	26	81%	34	88%
		SP	Full term	31	94%	35	89%	20	90%
		SU	Full term	15	100%	7	86%	16	94%
		Course		77	96%	68	85%	70	90%
	OST2431	FA	Full term	3	100%	8	88%	23	96%
		SP	Full term	9	78%	20	90%	15	93%
		Course		12	83%	28	89%	38	95%
	OST2501	SP	Full term	61	95%	41	85%	38	87%
		SU	Full term	2	100%				
		Course		63	95%	41	85%	38	87%
	OST2713	FA	Full term	13	69%	15	100%	10	60%
		SP	Full term	17	100%	9	100%	14	86%
		Course		30	87%	24	100%	24	75%
	QMB1001	FA	Full term	24	58%	14	64%	56	63%
		SP	Full term	17	76%			37	65%
Course		41	66%	14	64%	93	63%		

Placement Rates								
Program Title	Major(s)	2010/11		2011/12		2012/13		Average Annual Salary
		DSC%	FCS%	DSC%	FCS%	DSC%	FCS%	
MARKETING, SALES,SER ENT	0817							
BUSINESS OPER/ENTREPREN	0913	100%	97%	100%	96%	100%	100%	\$**,***
OFFICE MANAGEMENT	0914	80%	88%	80%	94%	97%	99%	\$ 28,616
BUSINESS MANAGEMENT	0916	100%	100%	100%	99%	100%	99%	\$ 35,100
OFFICE MGMT-MEDICAL	0919	80%	88%	80%	94%	97%	99%	\$ 28,616
OFFICE SUPPORT-TECH. CER	0926	100%	89%	87%	92%	98%	99%	\$ 27,024
ACCOUNTING OPER-TAX PREP	0935	94%	94%	100%	93%	65%	78%	\$ 32,324
ACCOUNTING TECH MGMT	0943	91%	84%	86%	87%	54%	63%	\$ 30,448
TELEVISION STUDIO PROD	0979					83%	1%	\$**,***
BUSINESS ADMINISTRATION	2059	94%	92%	88%	93%	90%	97%	\$**,***
PARALEGAL-LEGAL ASST	2062	50%	82%	100%	85%	77%	76%	\$**,***
ACCOUNTING TECHNOLOGY	2084	100%	85%	83%	83%	75%	59%	\$ 30,996
INDUSTRIAL MGMT TECH	2221					100%	97%	\$**,***
OFFICE ADM-MED SYSTEMS	2228					100%	98%	\$**,***
OFFICE ADMINISTRATION	2229					100%	98%	\$**,***

Notes:

Graduates in cohort year are tracked in the following year and reported 1 year later.

All continuing education outcomes are based on enrollment data for the fall semester and preliminary winter/spring semester.

All employment outcomes are based on the October - December quarterly data each year.

Individuals are only counted in one educational sector.

Full quarter earnings displayed only when 10 or more graduates are employed full time/full quarter.

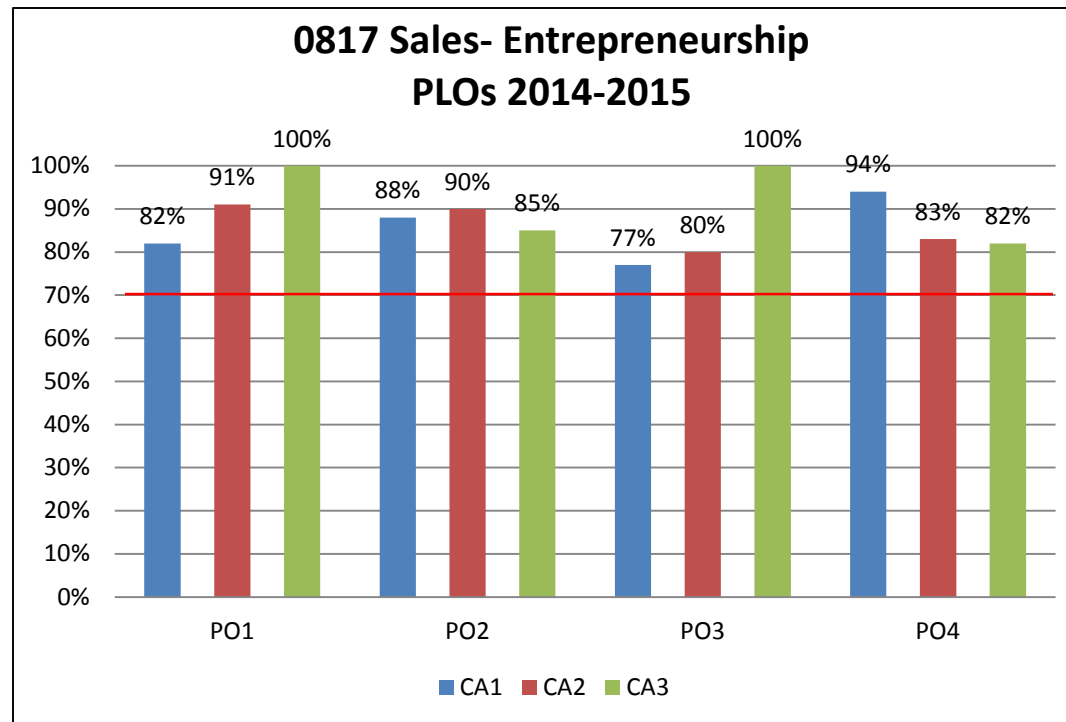
Source: IR Program Assessment Data

Program Learning Outcomes

Sales Entrepreneurship Certificate #0817

Graduates of the program will be able to:

1. Create a project for an organization that incorporates marketing research and concepts.
2. Differentiate social media marketing platforms, options and their beliefs to organizations.
3. Plan and organize a sales presentation.
4. Identify methods for evaluating the effectiveness of various advertising media.

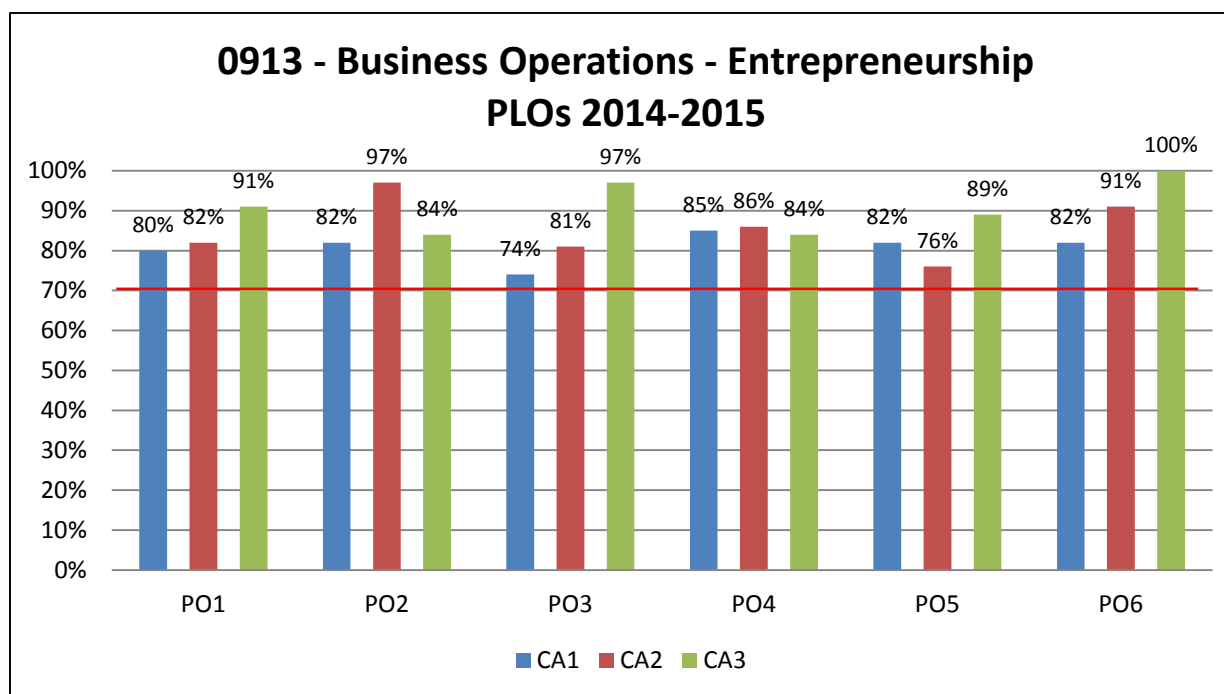


CA: Critical Assignment

Program Learning Outcomes

Business Management Certificate #0913

1. Prepare and use financial information to support decision making.
2. Generate effective communication of ideas, concepts and terminology.
3. Interpret and apply business related theories and technology to problems, cases, or research papers.
4. Utilize appropriate software and prepare applicable business documentation.
5. Formulate a marketing plan for a company that incorporates marketing concepts.
6. Develop a business plan for a new business venture.

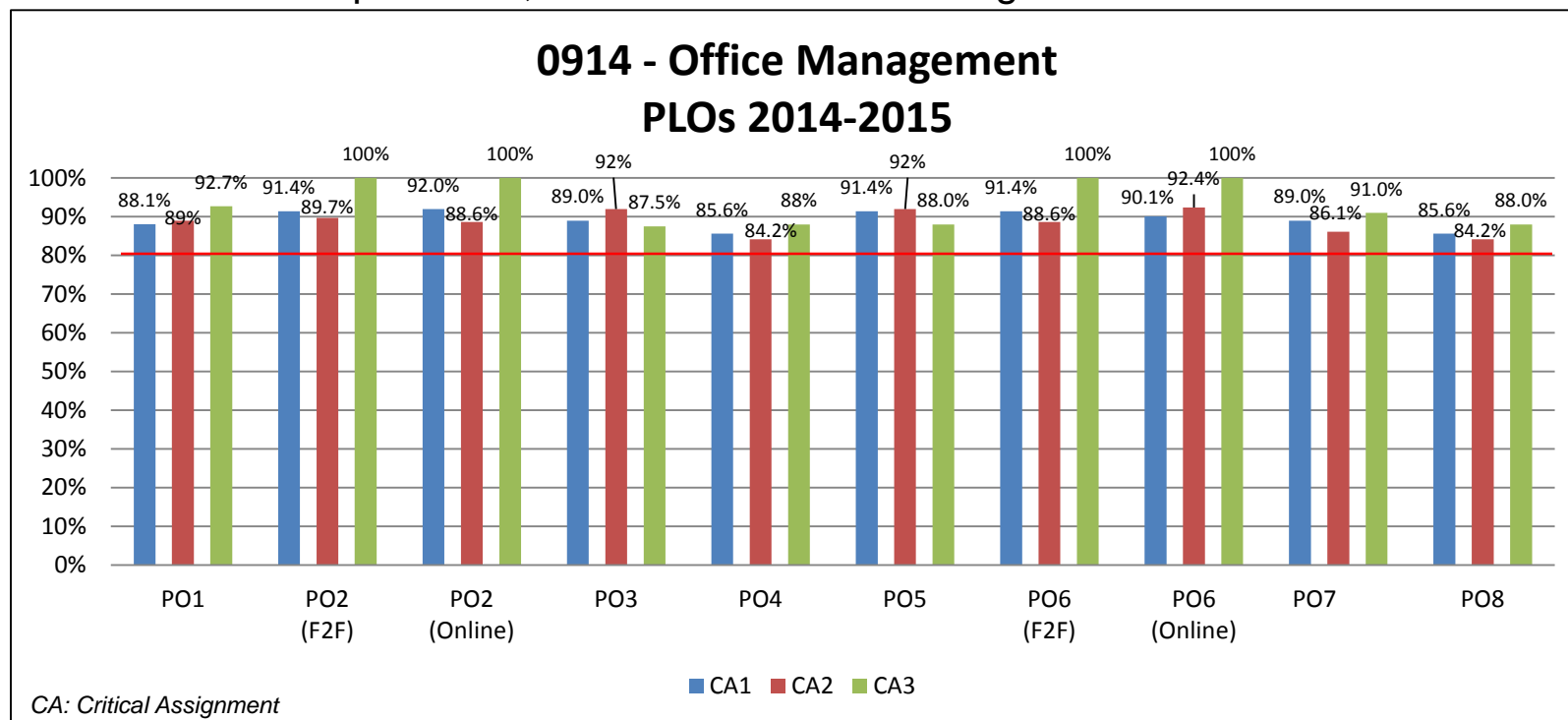


CA: Critical Assignment

Program Learning Outcomes

Certificate Office Management #0914

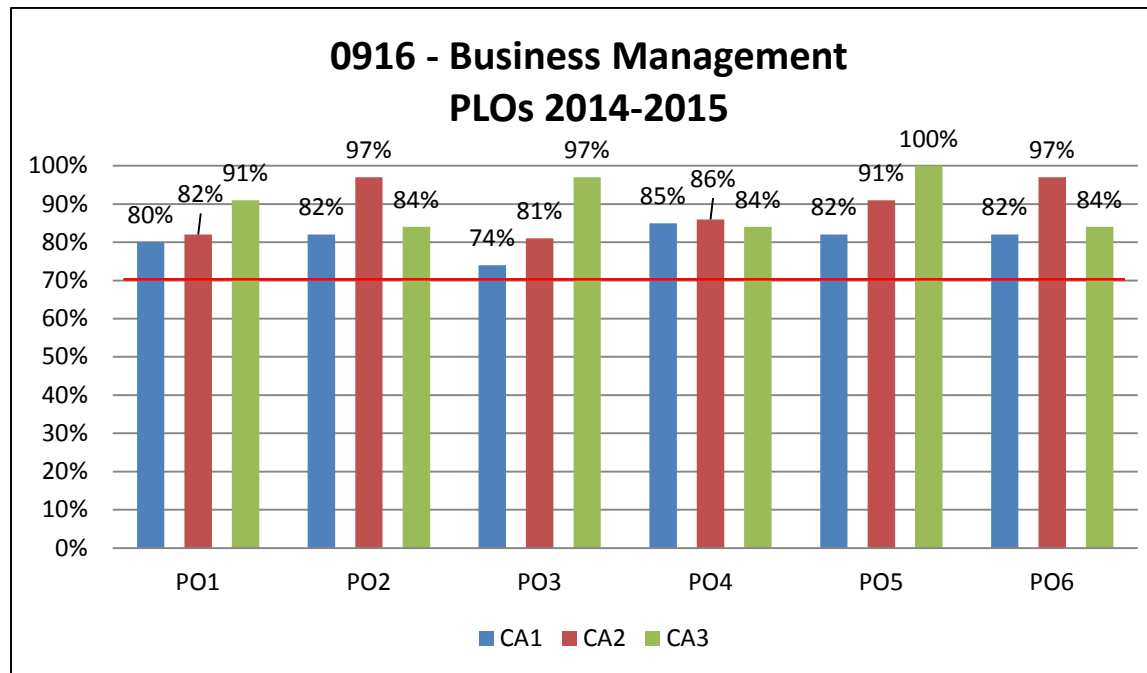
1. Communicate in a clear and effective manner.
2. Perform keyboarding and document processing activities.
3. Demonstrate knowledge of human relations skills.
4. Demonstrate employability skills.
5. Develop leadership skills.
6. Perform information processing and transmittal activities.
7. Perform decision-making activities as related to business software and the office environment.
8. Perform business computations, records and office management skills.



Program Learning Outcomes

Business Management Certificate #0916

1. Prepare and use financial information to support decision making.
2. Generate effective communication of ideas, concepts and terminology.
3. Interpret and apply business related theories and technology to problems, cases, or research papers.
4. Utilize appropriate software and prepare applicable business documentation.
5. Formulate a marketing plan for a company that incorporates marketing concepts.
6. Develop a business plan for a new business venture.

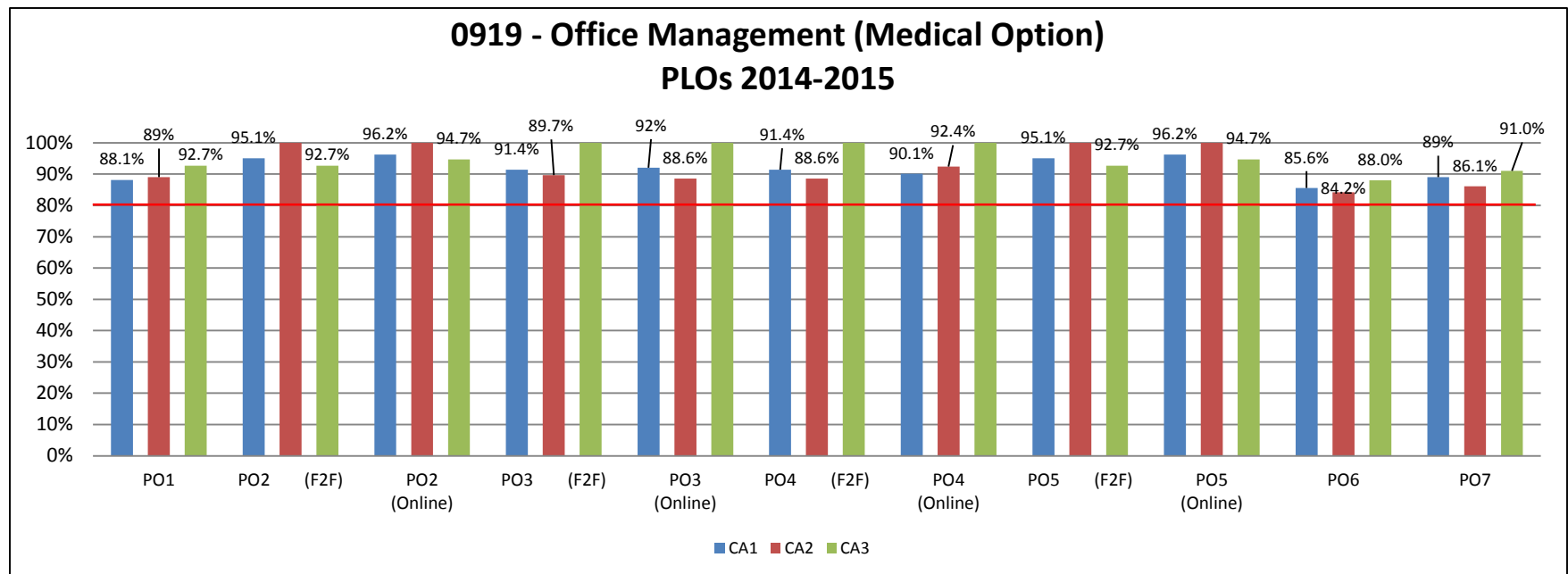


CA: Critical Assignment

Program Learning Outcomes

Certificate Office Management (Medical Option) #0919

1. Communicate in a clear and effective manner.
2. Perform business computations, records and medical office management skills.
3. Perform keyboarding and document processing activities.
4. Perform information processing and transmittal activities.
5. Develop leadership skills.
6. Demonstrate employable skills.
7. Demonstrate knowledge of human relations skills.

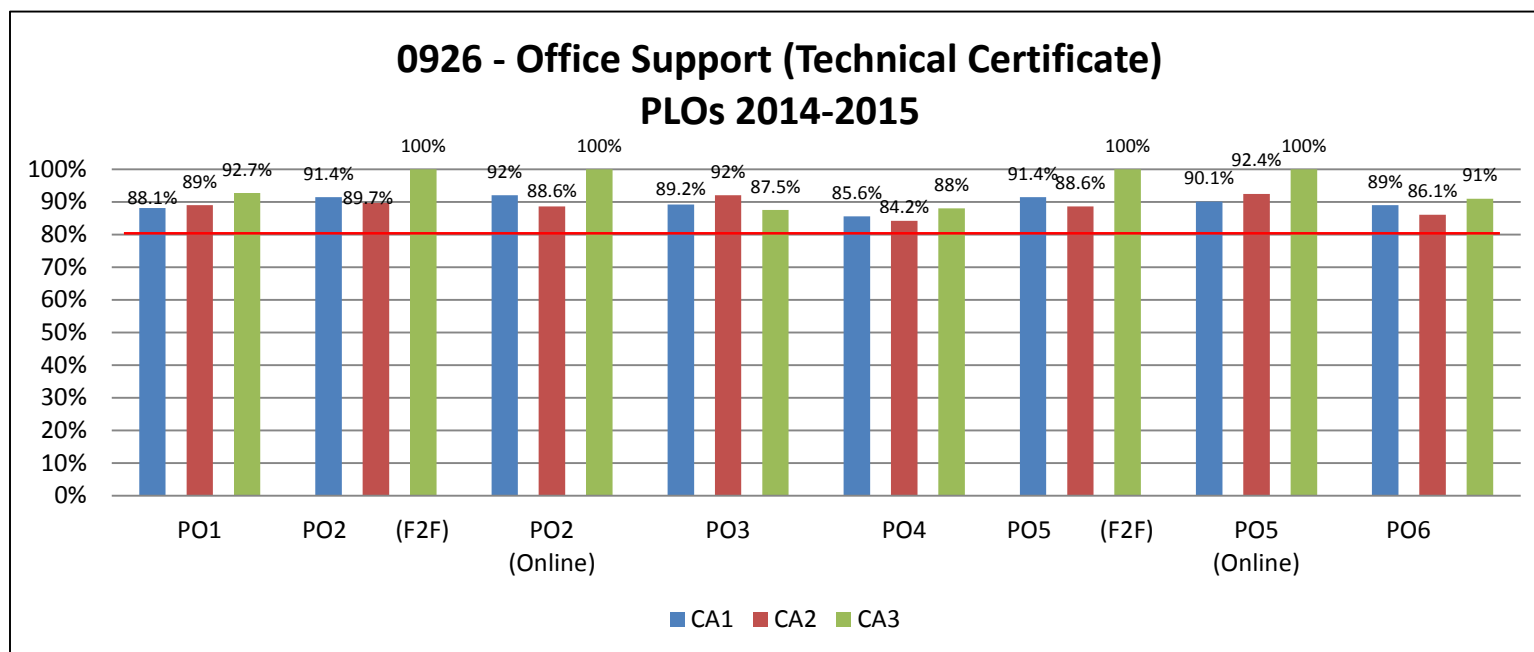


CA: Critical Assignment

Program Learning Outcomes

Certificate Office Support (Technical) #0926

1. Communicate in a clear and effective manner.
2. Perform keyboarding and document processing activities.
3. Demonstrate knowledge of human relations.
4. Demonstrate employability skills.
5. Perform information processing and transmittal activities.
6. Perform decision-making activities as related to business software and the office environment.

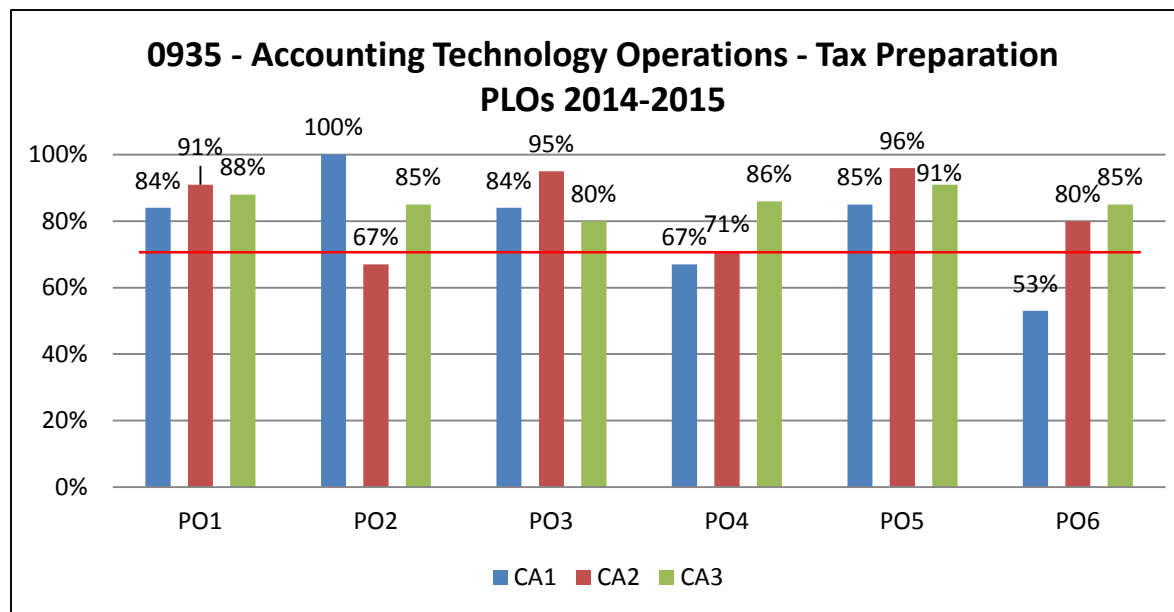


CA: Critical Assignment

Program Learning Outcomes

Accounting Technology Operations – Tax Preparation - #0935

1. Demonstrate clear and effective communication
2. Solve business problems using critical thinking.
3. Identify and discuss legal and ethical issues in tax preparation, financial planning, and the business environment.
4. Use appropriate software and hardware to produce tax returns, financial plans, and financial reports.
5. Demonstrate a basic working knowledge of estate planning, investment planning and cash management.
6. Apply Generally Accepted Accounting Principles to record, summarize, and report business transactions.

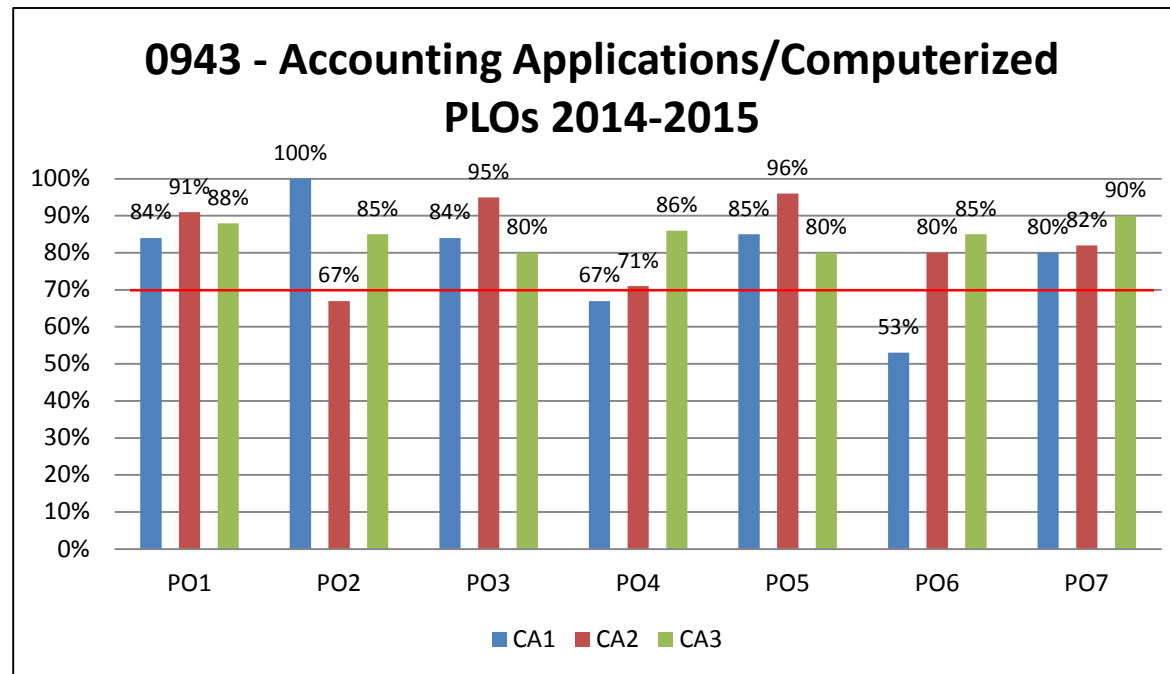


CA: Critical Assignment

Program Learning Outcomes

AS Certificate – Accounting Applications/Computerized #0943

1. Demonstrate clear and effective communication
2. Solve business problems using critical thinking.
3. Identify and discuss legal and ethical issues in tax preparation, financial planning, and the business environment.
4. Use appropriate software and hardware to produce tax returns, financial plans, and financial reports.
5. Demonstrate a basic working knowledge of estate planning, investment planning and cash management.
6. Apply Generally Accepted Accounting Principles to record, summarize, and report business transactions.
7. Demonstrate an understanding of corporate finance in the field of business.

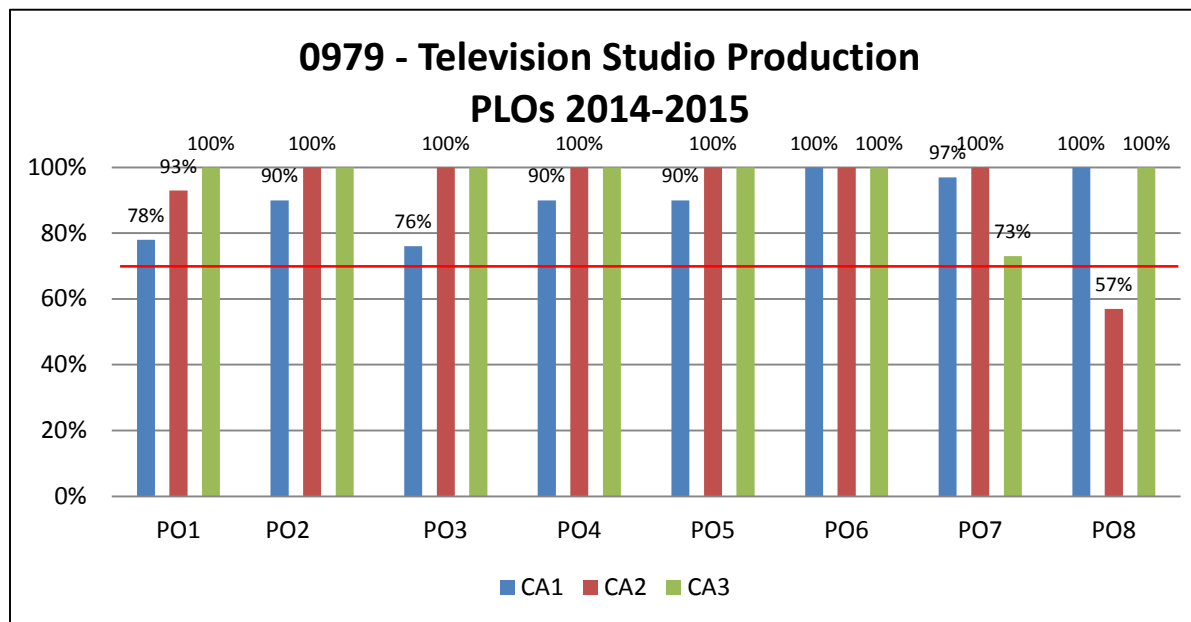


CA: Critical Assignment

Program Learning Outcomes

Television Studio Production Certificate #0979

1. Exhibit team skills.
2. Model safe and efficient work practices.
3. Create appropriate lighting for location and/or set productions.
4. Operate a video camera
5. Generate studio and/or location footage.
6. Record mix, and edit audio resources.
7. Use production control room equipment.
8. Organize and edit video resources

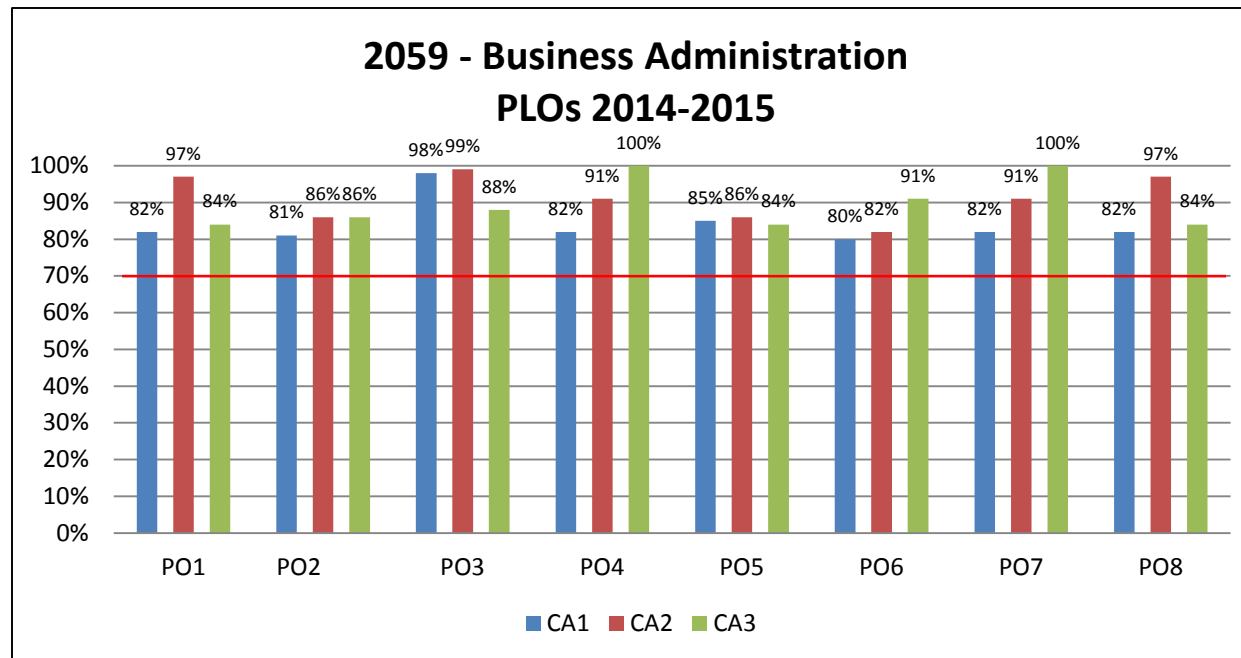


CA: Critical Assignment

Program Learning Outcomes

AS Business Administration #2059

1. Generate effective communication of ideas, concepts and terminology.
2. Identify legal and ethical concerns and demonstrate social responsibility in business situations.
3. Explain how economic theories impact businesses and consumers.
4. Interpret and apply business related theories and technology to problems, cases, or research papers.
5. Utilize appropriate software and prepare applicable business documentation.
6. Create and analyze financial information for management related decisions.
7. Formulate a marketing plan for a company that incorporates marketing concepts.
8. Develop a business plan for a new business venture.



CA: Critical Assignment

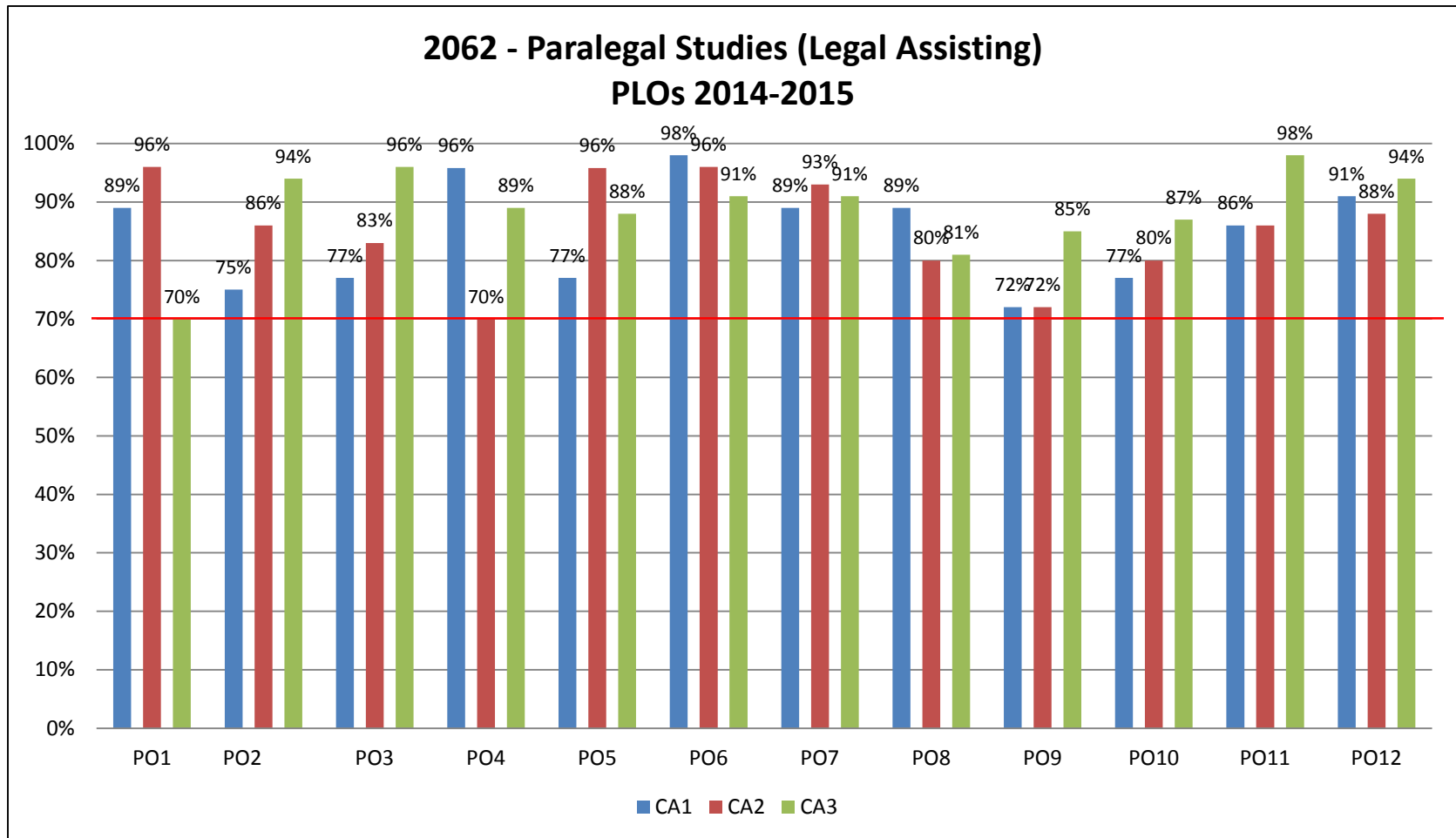
Program Learning Outcomes

AS Paralegal Studies (Legal Assisting) #2062

1. Communicate in a clear and effective manner.
2. Identify and apply ethical and professional standards of the paralegal profession.
3. Demonstrate ability to utilize the law library and electronic legal research to create well-written legal documents.
4. Apply knowledge of tort law, constitutional law, and criminal law concepts to analyze factual situations.
5. Demonstrate knowledge of all phases of litigation practice and procedure.
6. Examine real property law and its application to real property transactions.
7. Analyze issues related to estate planning and probate administration concepts and their application to probate procedures.
8. Identify the fundamental principles of the law of business organizations.
9. Explain how contract law and the Uniform Commercial Code impacts individuals and business entities.
10. Demonstrate knowledge of entrepreneurship, management techniques and procedures.
11. Analyze family law situations by applying family law and procedure.
12. Identify and demonstrate employability skills.

Program Learning Outcomes

AS Paralegal Studies (Legal Assisting) #2062



CA: Critical Assignment

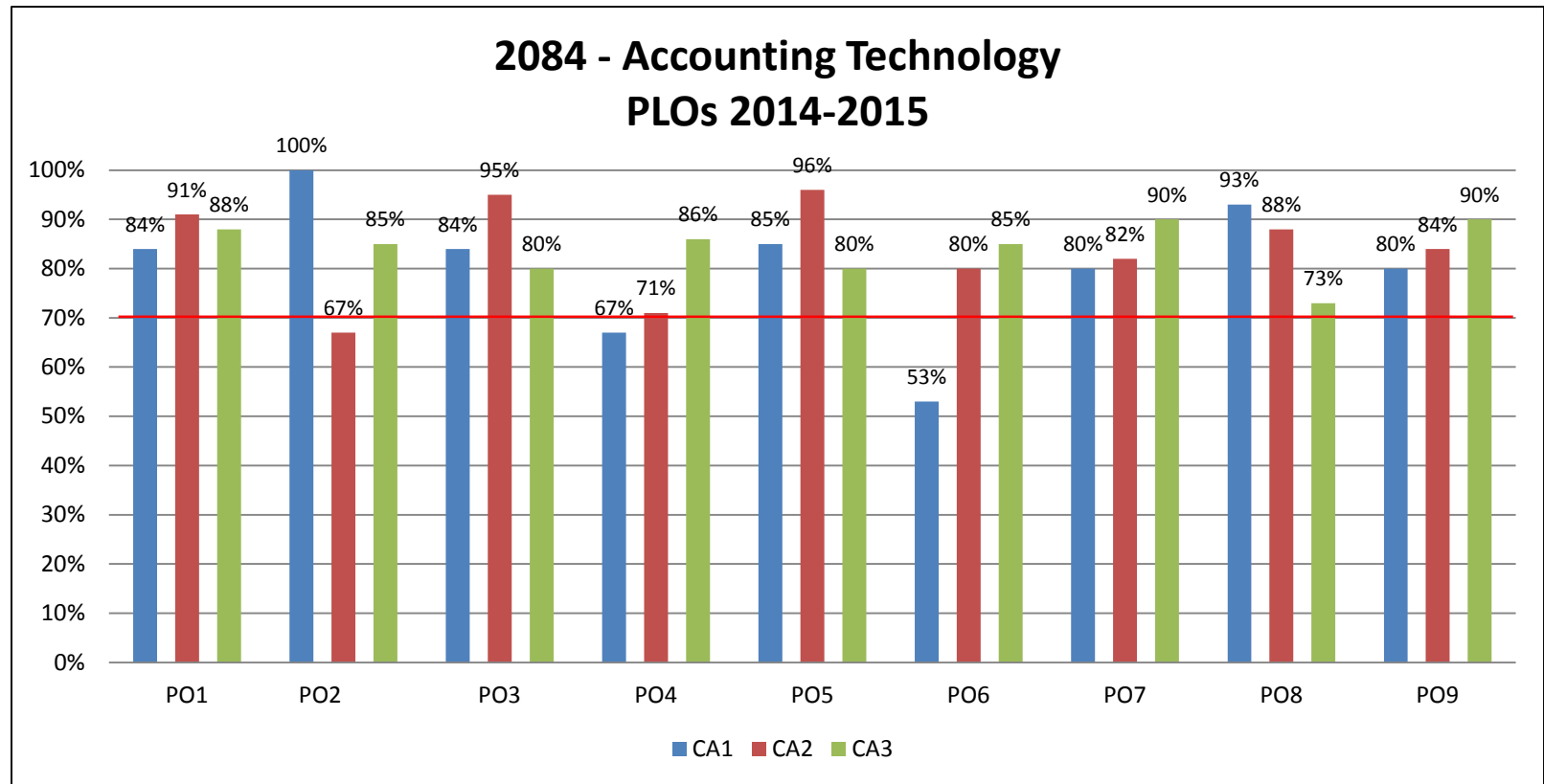
Program Learning Outcomes

AS Accounting Technology #2084

1. Demonstrate clear and effective communication
2. Solve business problems using critical thinking.
3. Identify and discuss legal and ethical issues in tax preparation, financial planning, and the business environment.
4. Use appropriate software and hardware to produce tax returns, financial plans, and financial reports.
5. Demonstrate a basic working knowledge of estate planning, investment planning and cash management.
6. Apply Generally Accepted Accounting Principles to record, summarize, and report business transactions.
7. Demonstrate an understanding of corporate finance in the field of business.
8. Identify sound measures of internal control and protection of business assets.
9. Demonstrate an understanding of the global business environment.

Program Learning Outcomes

AS Accounting Technology #2084

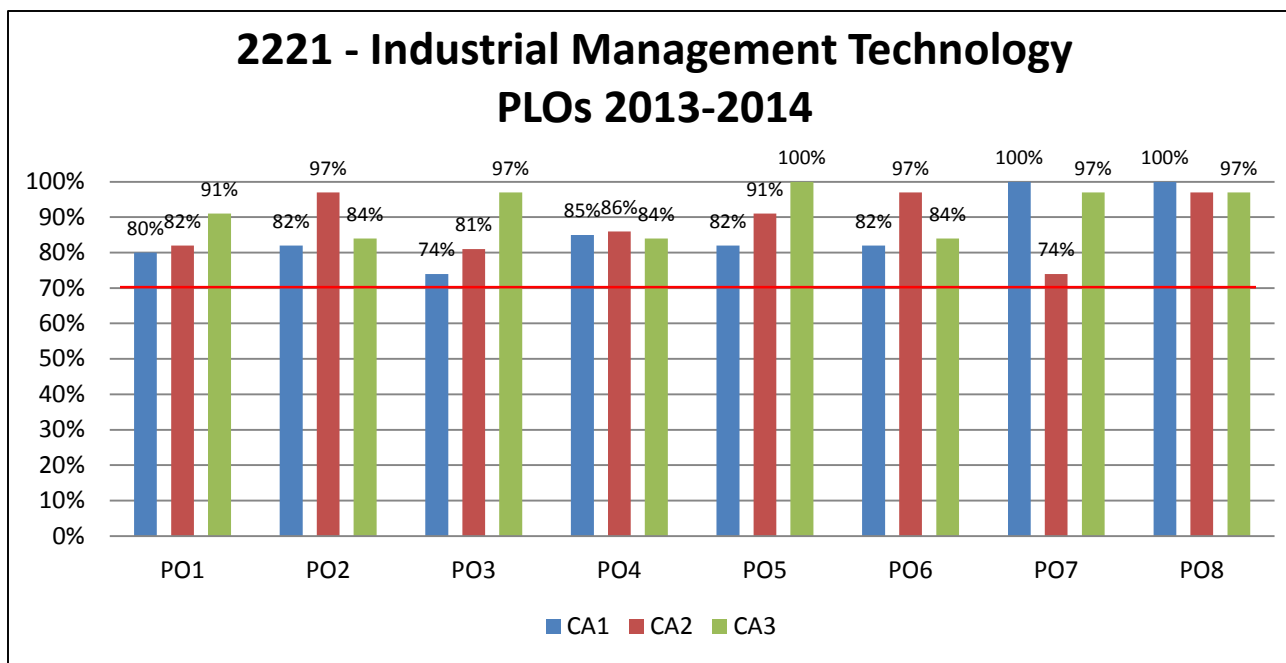


CA: Critical Assignment

Program Learning Outcomes

AS Industrial Management, code 2221

1. Prepare and use financial information to support decision making.
2. Generate effective communication of ideas, concepts and terminology.
3. Interpret and apply business related theories and technology to problems, cases, or research papers.
4. Utilize appropriate software and prepare applicable business documentation.
5. Formulate a marketing plan for a company that incorporates marketing concepts.
6. Develop a business plan for a new business venture.
7. Demonstrate proficiency in a technical field including theory, applications, troubleshooting and safety.
8. Demonstrate the ability to plan and initiate projects related to the field.

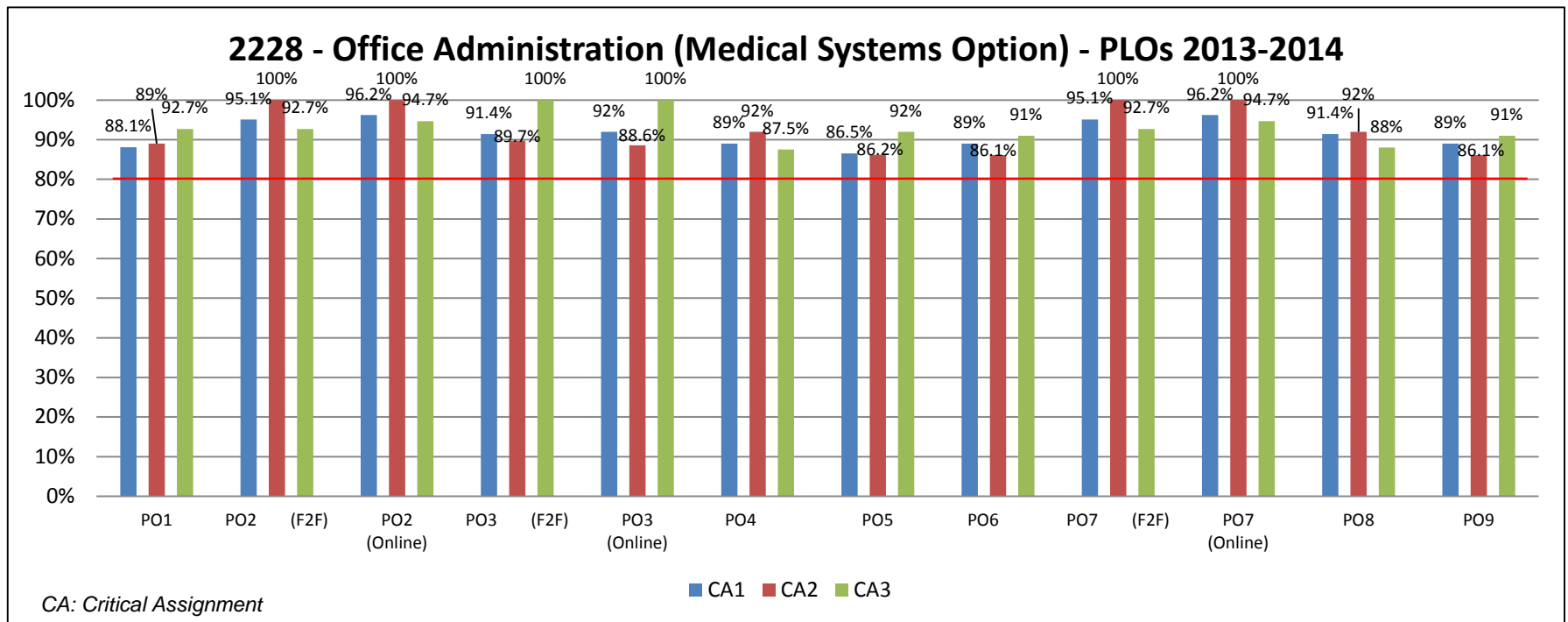


CA: Critical Assignment

Program Learning Outcomes

Office Administration (Medical Systems Option) #2228

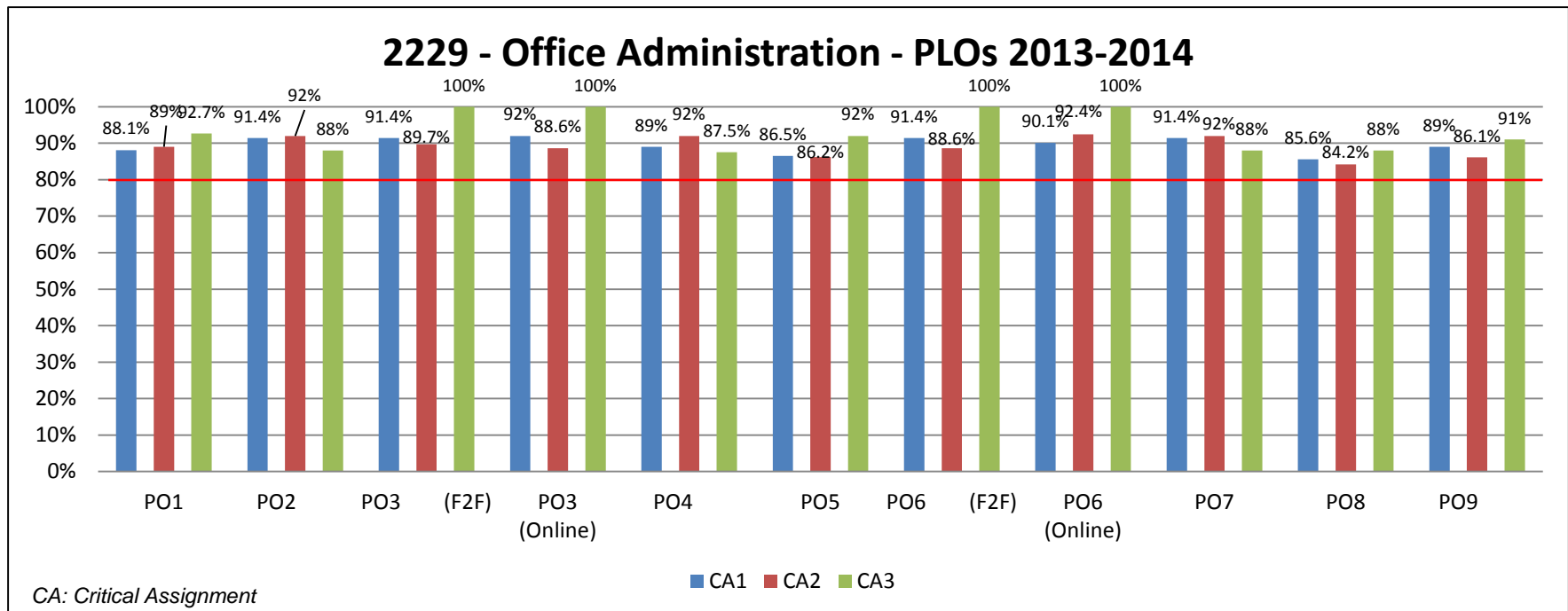
1. Communicate in a clear and effective manner.
2. Perform business computations, records and medical office management skills.
3. Perform keyboarding and document processing activities.
4. Demonstrate knowledge of human relations skills.
5. Demonstrate employable skills.
6. Perform information processing and transmittal activities.
7. Develop leadership skills.
8. Perform consumer purchasing activities.
9. Perform decision making activities.



Program Learning Outcomes

AS Office Administration #2229

1. Communicate in a clear and effective manner.
2. Perform business computations, records and office management skills.
3. Perform keyboarding and document processing activities.
4. Demonstrate knowledge of human relation skills.
5. Demonstrate employability skills.
6. Perform information processing and transmittal activities.
7. Develop leadership skills.
8. Perform consumer purchasing activities.
9. Perform decision-making activities.



Assessment Data 2013-2014 and 2014-2015: Programs and Institutional Learning Outcomes

Program	Critical/ Creative Thinking		Communication		Cultural Literacy		Information & Technical Literacy	
	13/14	14/15	13/14	14/15	13/14	14/15	13/14	14/15
0817 - MARKETING, SALES, SER ENT	76%	82%-100%	61%	77%-100%	82%	82%-94%	88%	85%-90%
0913 - BUSINESS OPER/ENTREPREN.	76%	82%-100%	92%	82%-97%	76%	82%100%	65%	84%-86%
0914 - OFFICE MANAGEMENT	92%	86.2%-92%	93.6%	88.1%-92.7%	95.7%	88%-92%	98.2%	84%-89%
0916 - BUSINESS MANAGEMENT	76%	82%-100%	96%	82%-97%	76%	82%100%	65%	84%-86%
0919 - OFFICE MGMT-MEDICAL	93.1%	86.1%-91%	93.6%	88.1%-92.7%	92.7%	92.7%-100%	92.7%	86.1%-91%
0926 - OFFICE SUPPORT-TECH. CER	91.4%	88.6%-100%	93.6%	88.1%-92.7%	97%	84.2%-88%	92.7%	86.1%-91%
0935 - ACCOUNTING OPER-TAX PREP	82%	67%-91%	65%	84%-91%	79%	80%-91%	79%	67%-91%
0943 - ACCOUNTING TECH MGMT	82%	67%-91%	65%	84%-91%	79%	80%-91%	79%	67%-91%
0979 - TELEVISION STUDIO PROD	100%	100%	85%	74%-100%	100%	100%	95%	91%-100%
2059 - BUSINESS ADMINISTRATION	76%	82%-100%	82%	82%-97%	76%	82%-100%	65%	84%-86%
2062 - PARALEGAL-LEGAL ASST	86%	86%-96%	76%	76%-96%	70%	70%-92%	83%	83%-94%
2084 - ACCOUNTING TECHNOLOGY	82%	67%-91%	65%	84%-91%	70%	70%-84%	82%	67%-91%
2221 - INDUSTRIAL MGMT TECH	100%	82%-100%	78%	82%-97%	78%	82%-100%	65%	84%-86%
2228 - OFFICE ADM-MED SYSTEMS	95.7%	88%-92%	92%	86.2%-92%	95.7%	88%-92%	91.2%	91.2%-100%
2229 - OFFICE ADMINISTRATION	98%	85.5%-89%	92%	86.5%-92%	92.7%	92.7%-96.2%	92.7%	86.1%-91%