

# ASSESSMENT DAY

---

College of Arts and Sciences

School of Behavioral and Social Sciences

November 6, 2015

# Academic Assessment



TYPE OF REVIEW	LEVEL	FOCUS	CONDUCTED BY	FREQUENCY
<b>Academic Success Committee Review</b>	Program	<ul style="list-style-type: none"> <li>Quality of assessment practices</li> </ul>	PC - Academic Success Committee	Years 1 & 2
<b>Instructional Program Review</b>	Program / Cluster	<ul style="list-style-type: none"> <li>Enrollment, retention, completion trends</li> <li>Industry certifications and job placement trends</li> <li>Program cost and staffing trends</li> <li>Advisory committees, curriculum changes</li> </ul>	PC - Instructional Program Review Committee	Year 3
<b>Assessment Day</b>	Course/ Program	<ul style="list-style-type: none"> <li>Enrollment by department, program and course and by age, gender and race</li> <li>Number of graduates, average class size</li> <li>Course success rate by instructional method, by campus and by sub-session</li> <li>Job placement</li> <li>Student learning outcomes and institutional learning outcomes</li> </ul>	Program Chair, Faculty (data provided by Institutional Effectiveness and Institutional Research)	Years 1, 2, 3

# Programs

[0813 - Addictions Studies Specialization](#)

[2007 - Human Services \(Addictions Specialization\)](#)

# Classes (1 of 2)

[AFR1101](#) The Air Force Today I (General Military Course) - AF101

[AFR2131](#) The Development of Air Power II (General Military Course) - AF202

[AFR4231](#) Preparation for Active Duty I (Professional Officer Course) - AF401

[AMH2020](#) United States History 1865 to Present

[AMH2047](#) Survey of US Military History

[AMH2059](#) The Vietnam War

[CLP2140](#) Abnormal Psychology

[DEP2004](#) Developmental Psychology

[EUH2000](#) History of Western Civilization to 1648

[EXP2420](#) Animal Learning

[HUS1001](#) Introduction to Human Services

[HUS1421](#) Assessment and Treatment Planning in Addictions

[HUS1450](#) Dual Diagnosis

[AFR1111](#) The Air Force Today II (General Military Course) - AF102

[AFR3220](#) Force Leadership Studies I (Professional Officer Course) - AF301

[AFR4232](#) Preparation for Active Duty II (Professional Officer Course) - AF402

[AMH2042](#) American Social History 1860 to Present

[AMH2057](#) The American Civil War

[AMH2091](#) Survey of African American History

[CPO2001](#) Comparative Government

[DEP2402](#) Psychology of Adulthood and Aging

[EUH2001](#) History of Western Civilization from 1648 to Present

[GEO2000](#) World Geography

[HUS1332](#) Advanced Counseling/Interview Skills

[HUS1423](#) Group Counseling in Substance Abuse

[HUS1850](#) Human Services Externship I

[AFR2130](#) The Development of Air Power I (General Military Course) - AF201

[AFR3221](#) Force Leadership Studies II (Professional Officer Course) - AF302

[AMH2010](#) United States History to 1877

[AMH2045](#) American Maritime History

[AMH2058](#) World War II

[ANT2000](#) Introduction to Anthropology

[DEP2001](#) Infant Child and Adolescent Psychology

[DEP2481](#) Death and Dying: Life and Living

[EUH2905](#) Directed Study in European History

[GEO2420](#) Cultural Geography

[HUS1400](#) Introduction to Chemical Dependency/Addiction

[HUS1424](#) Counseling for the Chemically Dependent

[HUS2308](#) Psychotherapy: Theory and Practice

# Classes (2 of 2)

[HUS2425](#)

[HUS2520](#) Dynamics of Abnormal Human Behavior

[HUS2933](#) Human Services Seminar

[INR2002](#) International Relations

[MSL2101](#) Individual Leadership Studies - MSL201

[MSL3202](#) Applied Team Leadership - Army ROTC - MSL 302

[MSL4302](#) Leadership in a Complex World - Army ROTC - MSL 402

[PHI2600](#) Introduction to Ethics

[POS2112](#) State and Local Government

[PSB2442](#) Addictions I - Psychology of Addictions

[PSY2931](#)

[PSY2934](#)

[PSY2937](#)

[SOP2772](#) Psychology of Human Sexuality

[SYG2430](#)

[HUS2441](#) Addictions, Families, and Communities

[HUS2851](#) Human Services Externship II

[IDS2191](#) The 1960's - The Era of Metamorphosis

[MSL1001](#) Foundations of Officership - MSL101

[MSL2102](#) Leadership and Teamwork - MSL202

[MSL3203](#)

[PHI2010](#) Introduction of Philosophy

[POS2001](#)

[POS2930](#) Russian Politics and Foreign Policy

[PSY1012](#) General Psychology

[PSY2932](#)

[PSY2935](#) Special Topics in Parenting and Family Dynamics

[REL2300](#) World Religion

[SYG2000](#) Introduction to Sociology

[WOH2012](#) World History Before 1500

[HUS2500](#) Issues and Ethics in Human Services

[HUS2852](#) Human Services Externship III

[INP1390](#) Human Relations in the Workplace

[MSL1002](#) Basic Leadership - MSL102

[MSL3201](#) Adaptive Team Leadership - Army ROTC - MSL 301

[MSL4301](#) Adaptive Leadership - Army ROTC - MSL 401

[PHI2100](#) Philosophy of Reasoning, Argument and Critical Thinking

[POS2041](#) American Federal Government

[PPE2001](#) Survey of Personality

[PSY2905](#) Directed Study in Psychology

[PSY2933](#) Special Topics in Clinical Psychology

[PSY2936](#) Special Topics in Comparative Psychology

[SOP2002](#)

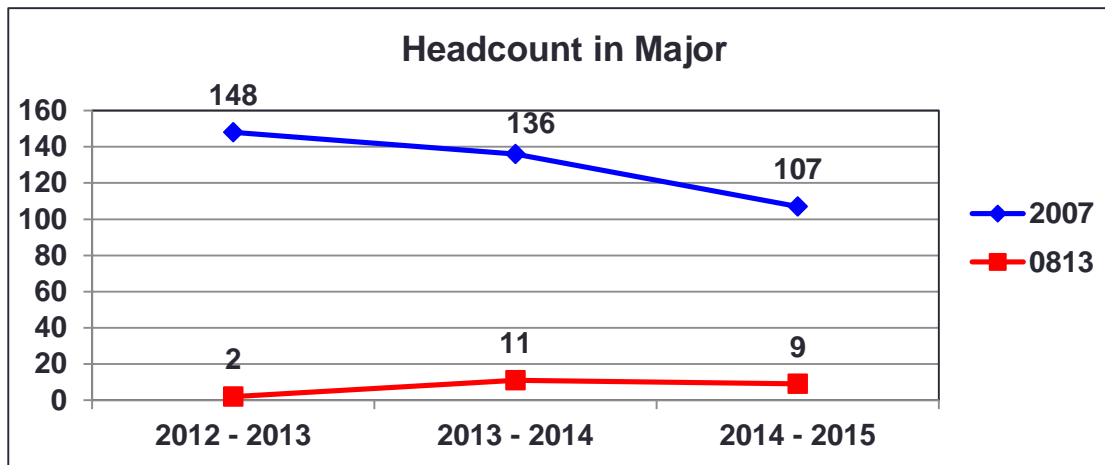
[SYG2010](#) Social Problems and Deviance

[WOH2022](#) World History After 1500

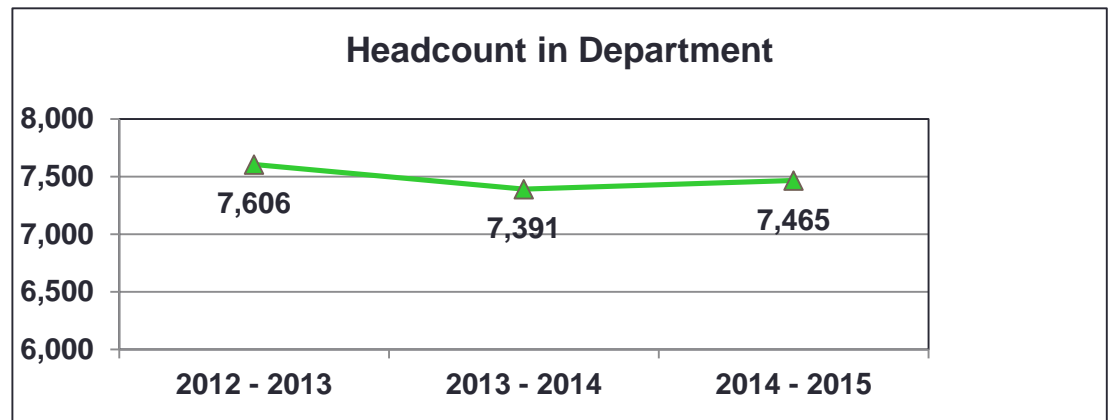
# Last Assessment Day – Action Items

School of Behavioral and Social Sciences

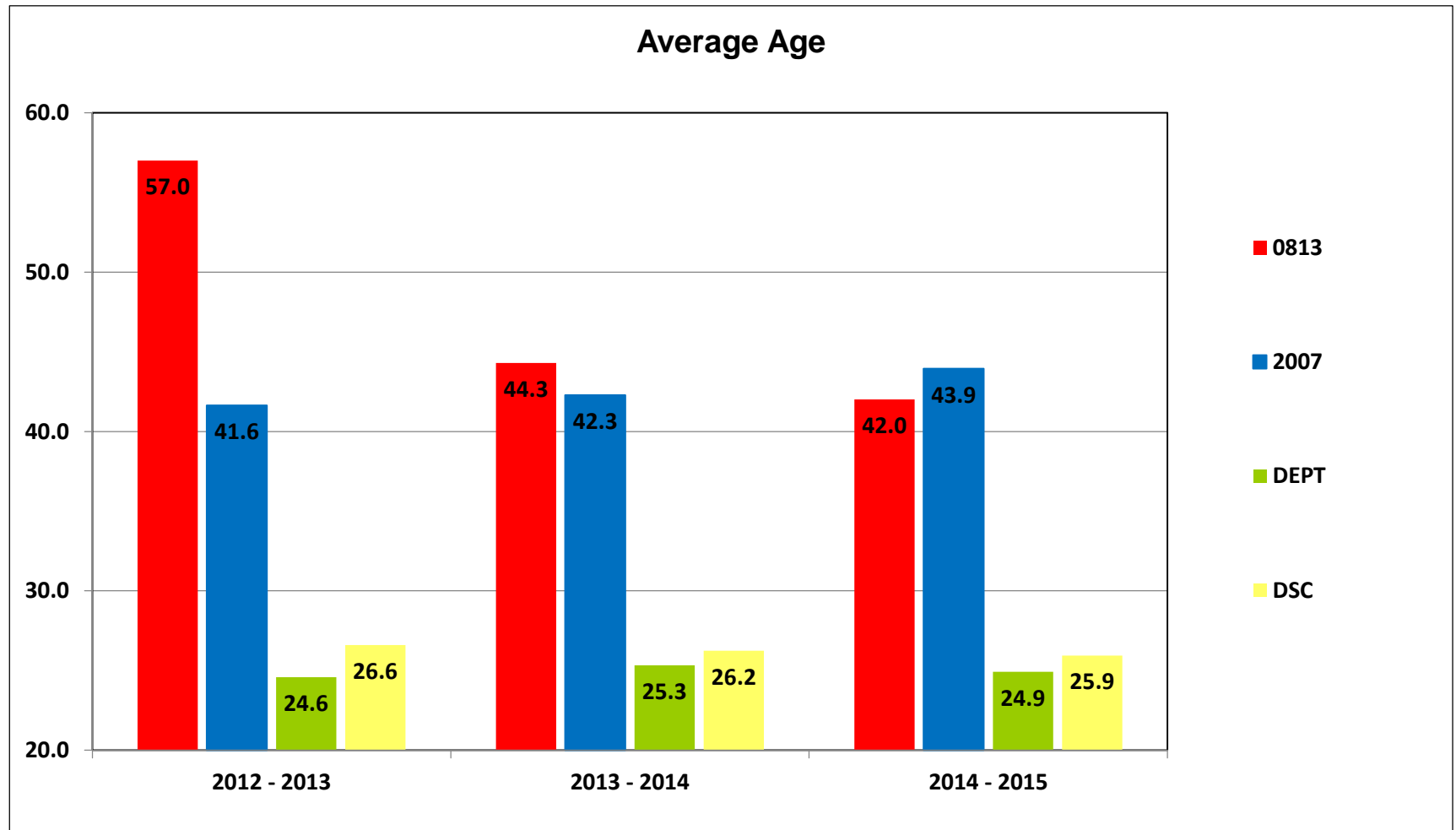
1. Brainstorm ways to improve online course success rate.
2. Study possibility to increase the number of hybrid courses.
3. Brainstorm ways to increase male enrollment for the certificate and AS degree programs.
4. Work with Marketing and faculty to brainstorm ideas to advertise courses.
5. Best practices for classroom instruction.
6. Include more service-learning in courses.
7. Study possibility to add more A and B terms courses.
8. Proposal for Planning Council: Retention Specialists
9. Assessment data:
  - a. Assessment results must reflect the level of achievement. No results should be given as class average.



2007 - Human Serv.- Addictions Spec
0813 - Addictions Studies Specialist



Headcount in majors includes students who have declared that major.  
 Headcount in department includes students taking courses in the department.



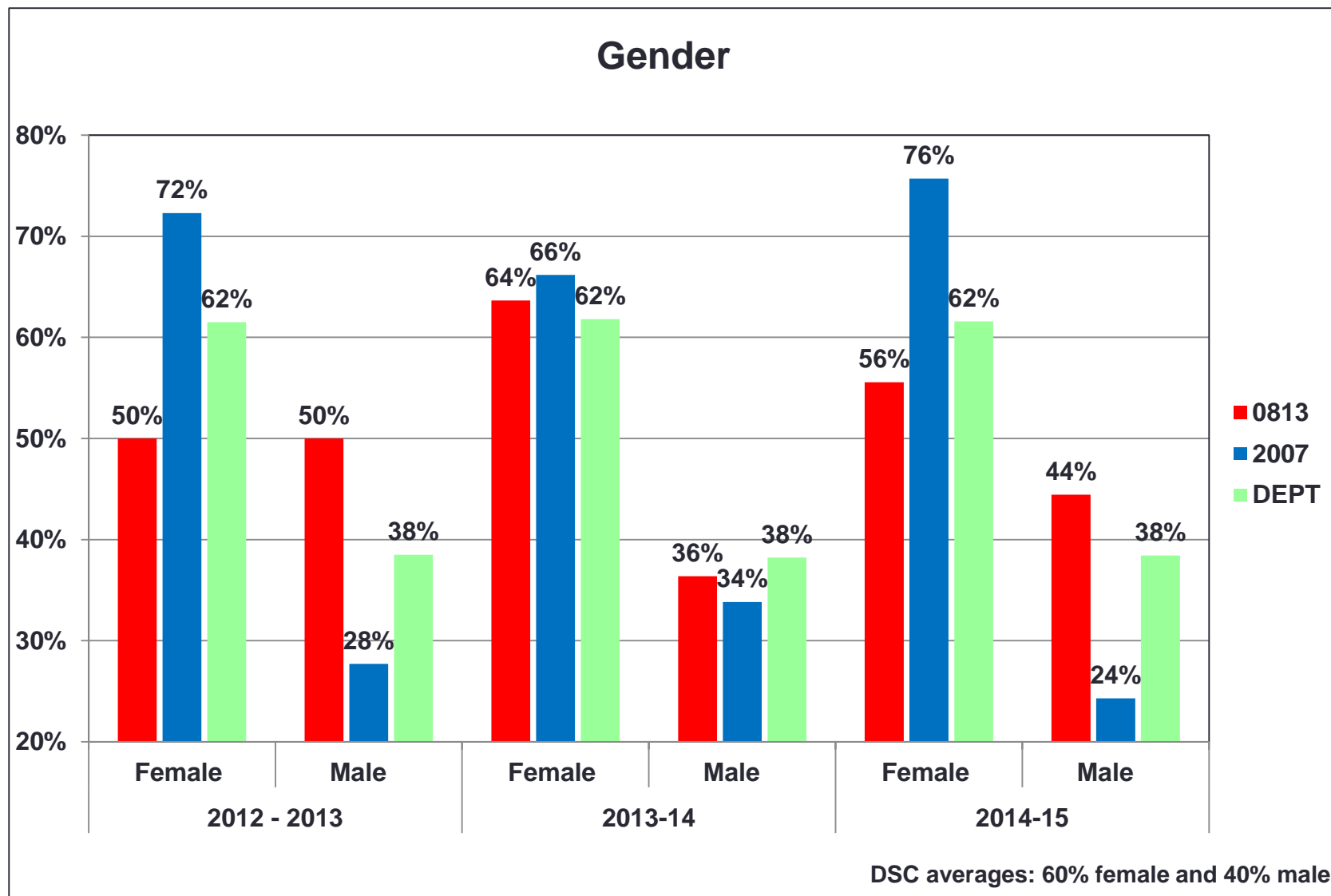
Source: IR Program Assessment Data

Calculation excludes individuals whose birthdates are not reported.

0813 - Addictions Studies Specialist

2007 - Human Serv.- Addictions Spec.





Source: IR Program Assessment Data

Excludes individuals whose gender is not reported.

0813 - Addictions Studies Specialist

2007 - Human Serv.- Addictions Spec.

## Enrollment by Race/Ethnicity

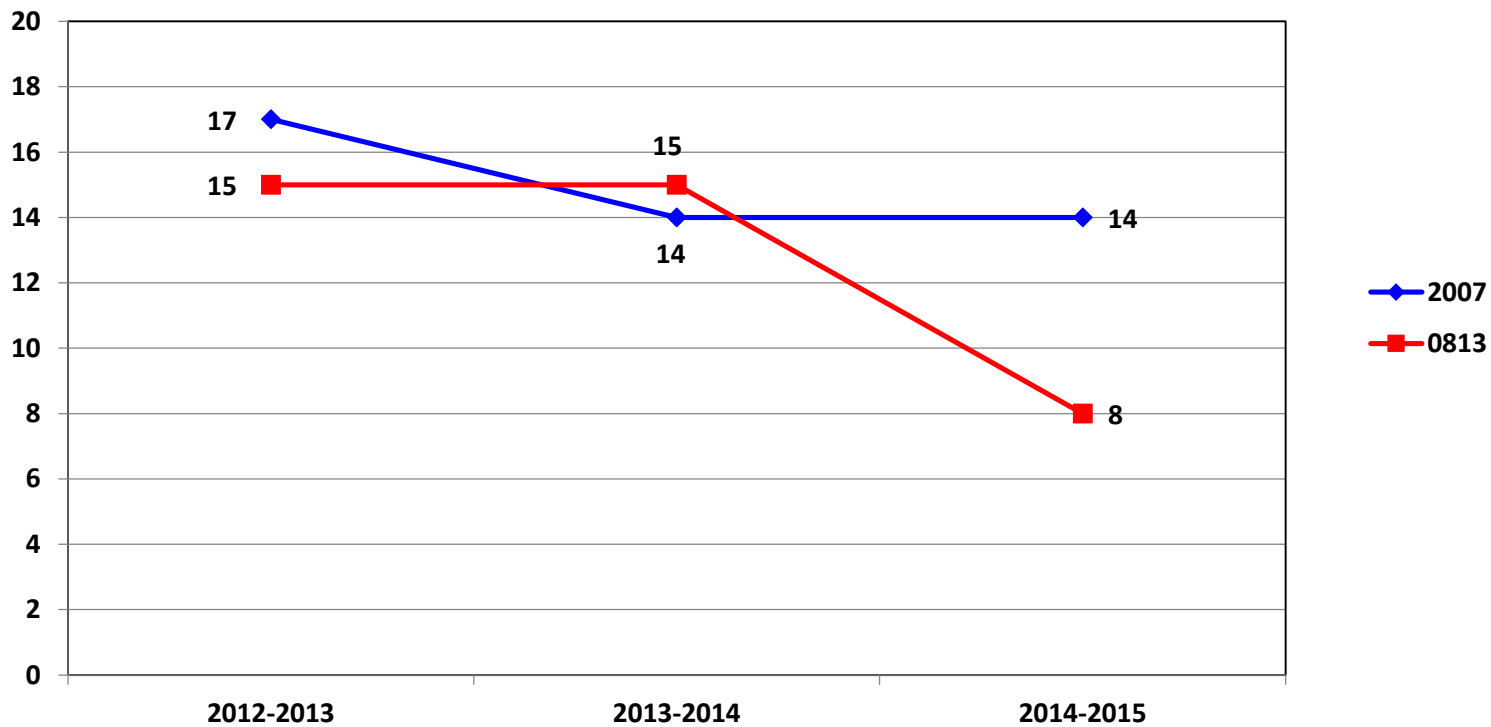
		2012 - 2013		2013 - 2014		2014 - 2015		DSC
		#	%	#	%	#	%	
<b>0813 - ADDICTIONS STUDIES SPEC.</b>	Black or African American	1	50%	2	18%	1	11%	14%
	Hispanic					2	22%	15%
	White	1	50%	9	82%	6	67%	67%
<b>2007 - HUMAN SRVS-ADDICT. SPEC.</b>	Amer. Indian / Alaska Native			1	1%			0.4%
	Asian	1	1%	2	1%	2	2%	2%
	Black or African American	41	28%	28	21%	22	21%	14%
	Hispanic	13	9%	14	10%	10	9%	15%
	Two or More Races	1	1%			1	1%	1%
	White	92	62%	89	65%	70	65%	67%
<b>Behavioral &amp; Social Science</b>	Amer. Indian / Alaska Native	40	1%	47	1%	39	1%	0.4%
	Asian	192	3%	160	2%	189	3%	2%
	Black or African American	892	12%	950	13%	1027	14%	14%
	Hispanic	875	12%	967	13%	1055	14%	15%
	Native Hawaii. / Pac. Islander	14	0.2%	8	0.1%	19	0.3%	0.2%
	Two or More Races	102	1%	139	2%	148	2%	1%
	White	5,424	72%	5,042	69%	4,879	66%	67%

Blank cells or missing years indicate no enrollment.

Excludes individuals whose race / ethnicity is not reported.

Source: IR Program Assessment Data

## Number of Graduates



0813 - Addictions Studies Specialist

2007 - Human Serv.- Addictions Spec.

## Graduation Rates

Major	Fall Cohort Year	# in Cohort	Graduated within 150% Time	150% Graduation Rate	Graduated within 200% Time	200% Graduation Rate
<b>0813- Addictions Studies Specialization</b>	2012	0				
	2013	4	0	<b>0.0%</b>	0	<b>0.0%</b>
	2014	4	1	<b>25.0%</b>	1	<b>25.0%</b>
<b>2007- Human Services</b>	2010	75	9	<b>12.0%</b>	12	<b>16.0%</b>
	2011	66	10	<b>15.2%</b>	12	<b>18.2%</b>
	2012	44	8	<b>18.2%</b>	8	<b>18.2%</b>

**Less than College average (150%- 44.8%, 200%- 49.23%)**

Fall Cohort Year includes prior Summer term enrollment in major.

Graduation within 200% time includes graduates within 150% time.

Source: IR Program Assessment Data

## Retention Rates

Program and Cohort Year		Registered	Exclusions	Adjusted Cohort	Retained by DSC		Retained by Program		Total Retained
					N	%	N	%	%
0813 ADDICTIONS STUDIES SPEC.	2011	4		4	2	50.00%			50.0%
	2013	5		5	1	20.00%	1	20.00%	40.0%
2007 HUMAN SRVS-ADDICT. SPEC.	2011	121	8	113	18	15.93%	51	45.13%	61.1%
	2012	106	13	94	8	8.51%	53	57.45%	66.0%
	2013	122	19	104	18	17.31%	45	44.23%	61.5%

**Less than College average (FT- 60.48%, PT- 52.08%)**

Registered - Includes all students enrolled in the fall term of the specified year, with the specified program as their primary major.

Exclusions - Includes students who are deceased or graduated fall of the specified year or the following spring or summer.

Retained by DSC - Students who were still registered at DSC the following fall but with a different primary major.

Retained by Program - Students who were registered the following fall with the same primary major.

Source: IR Program Assessment Data

## Average Class Size by Course (1 of 3)

Major and Associated Courses		2012-2013		2013-2014		2014-2015	
		Sections	Avg. Size	Sections	Avg. Size	Sections	Avg. Size
<b>2007 - Human Serv.- Addictions Spec.</b>	<b>HUS1001</b>			<b>1</b>	<b>33</b>	<b>3</b>	<b>23</b>
	<b>HUS1332</b>	<b>1</b>	<b>28</b>	<b>1</b>	<b>9</b>	<b>1</b>	<b>13</b>
	<b>HUS1400</b>			<b>1</b>	<b>24</b>	<b>2</b>	<b>25</b>
	<b>HUS1421</b>			<b>1</b>	<b>20</b>	<b>2</b>	<b>8</b>
	<b>HUS1423</b>			<b>1</b>	<b>23</b>	<b>2</b>	<b>13</b>
	<b>HUS1424</b>			<b>2</b>	<b>17</b>	<b>2</b>	<b>14</b>
	<b>HUS1450</b>					<b>1</b>	<b>20</b>
	<b>HUS2308</b>					<b>1</b>	<b>15</b>
	<b>HUS2424</b>			<b>2</b>	<b>24</b>		
	<b>HUS2425</b>					<b>1</b>	<b>18</b>
	<b>HUS2441</b>			<b>2</b>	<b>18</b>	<b>1</b>	<b>19</b>
	<b>HUS2500</b>			<b>2</b>	<b>22</b>	<b>3</b>	<b>14</b>
	<b>HUS2520</b>			<b>2</b>	<b>12</b>	<b>1</b>	<b>22</b>
	<b>HUS2933</b>			<b>2</b>	<b>15</b>	<b>1</b>	<b>15</b>
	<b>PSB2442</b>			<b>2</b>	<b>13</b>	<b>2</b>	<b>13</b>
	<b>Total</b>	<b>1</b>	<b>28</b>	<b>19</b>	<b>18</b>	<b>23</b>	<b>16</b>

Years are reporting years, SU-SP.

Blank cells or missing years indicate no enrollment.

To prevent data from skewing, the following instructional methods are excluded: CL - Clinical, CO - Co-op, D - Directed Independent Stu, IN - Internship (BSED), JT - On Job Training, LB - Lab, OL - Open Lab

## Average Class Size by Course (2 of 3)

Dept. and Associated Courses		2012-2013		2013-2014		2014-2015	
		Sections	Avg. Size	Sections	Avg. Size	Sections	Avg. Size
<b>Behavioral &amp; Social Sciences</b>	<b>AMH2010</b>	<b>21</b>	<b>24</b>	<b>24</b>	<b>22</b>	<b>19</b>	<b>26</b>
	<b>AMH2020</b>	<b>29</b>	<b>27</b>	<b>28</b>	<b>27</b>	<b>28</b>	<b>27</b>
	<b>AMH2057</b>	<b>1</b>	<b>30</b>	<b>2</b>	<b>19</b>	<b>2</b>	<b>12</b>
	<b>AMH2058</b>	<b>3</b>	<b>11</b>	<b>1</b>	<b>24</b>	<b>2</b>	<b>30</b>
	<b>AMH2059</b>	<b>1</b>	<b>27</b>	<b>1</b>	<b>37</b>	<b>2</b>	<b>19</b>
	<b>AMH2091</b>	<b>6</b>	<b>24</b>	<b>5</b>	<b>25</b>	<b>5</b>	<b>27</b>
	<b>CLP2140</b>	<b>9</b>	<b>44</b>	<b>9</b>	<b>40</b>	<b>7</b>	<b>33</b>
	<b>CPO2001</b>	<b>8</b>	<b>23</b>	<b>10</b>	<b>17</b>	<b>12</b>	<b>23</b>
	<b>DEP2001</b>	<b>1</b>	<b>38</b>	<b>1</b>	<b>57</b>	<b>1</b>	<b>54</b>
	<b>DEP2004</b>	<b>40</b>	<b>34</b>	<b>38</b>	<b>34</b>	<b>38</b>	<b>34</b>
	<b>DEP2402</b>	<b>1</b>	<b>39</b>	<b>1</b>	<b>36</b>	<b>1</b>	<b>23</b>
	<b>DEP2481</b>	<b>2</b>	<b>34</b>	<b>2</b>	<b>23</b>	<b>1</b>	<b>19</b>
	<b>EUH2000</b>	<b>3</b>	<b>31</b>	<b>3</b>	<b>15</b>	<b>2</b>	<b>20</b>
	<b>EUH2001</b>	<b>2</b>	<b>23</b>	<b>2</b>	<b>9</b>		
	<b>EUH2905</b>	<b>1</b>	<b>8</b>				
	<b>EXP2420</b>	<b>2</b>	<b>36</b>	<b>2</b>	<b>34</b>	<b>2</b>	<b>29</b>
	<b>GEO2000</b>	<b>23</b>	<b>36</b>	<b>24</b>	<b>38</b>	<b>25</b>	<b>37</b>
	<b>GEO2420</b>	<b>6</b>	<b>38</b>	<b>7</b>	<b>34</b>	<b>8</b>	<b>32</b>
	<b>IDS2191</b>	<b>1</b>	<b>14</b>				
<b>Total</b>	<b>368</b>	<b>32</b>	<b>360</b>	<b>31</b>	<b>340</b>	<b>33</b>	

Years are reporting years, SU-SP.

Blank cells or missing years indicate no enrollment.

To prevent data from skewing, the following instructional methods are excluded: CL - Clinical, CO - Co-op, D - Directed Independent Stu, IN - Internship (BSED), JT - On Job Training, LB - Lab, OL - Open Lab

## Average Class Size by Course (3 of 3)

Dept. and Associated Courses		2012-2013		2013-2014		2014-2015	
		Sections	Avg. Size	Sections	Avg. Size	Sections	Avg. Size
<b>Behavioral &amp; Social Sciences</b>	<b>INP1390</b>	<b>3</b>	<b>34</b>	<b>3</b>	<b>27</b>	<b>3</b>	<b>27</b>
	<b>INR2002</b>	<b>9</b>	<b>34</b>	<b>10</b>	<b>33</b>	<b>8</b>	<b>30</b>
	<b>PHI2001</b>	<b>7</b>	<b>31</b>	<b>11</b>	<b>31</b>	<b>9</b>	<b>32</b>
	<b>PHI2100</b>	<b>1</b>	<b>13</b>	<b>1</b>	<b>13</b>	<b>1</b>	<b>19</b>
	<b>PHI2600</b>	<b>4</b>	<b>30</b>	<b>4</b>	<b>28</b>	<b>5</b>	<b>36</b>
	<b>POS2001</b>	<b>1</b>	<b>28</b>	<b>3</b>	<b>31</b>	<b>3</b>	<b>34</b>
	<b>POS2041</b>	<b>30</b>	<b>33</b>	<b>26</b>	<b>29</b>	<b>26</b>	<b>31</b>
	<b>POS2112</b>	<b>6</b>	<b>32</b>	<b>8</b>	<b>32</b>	<b>8</b>	<b>28</b>
	<b>PPE2001</b>	<b>6</b>	<b>29</b>	<b>5</b>	<b>27</b>	<b>5</b>	<b>28</b>
	<b>PSY1012</b>	<b>90</b>	<b>36</b>	<b>83</b>	<b>38</b>	<b>78</b>	<b>43</b>
	<b>PSY2932</b>	<b>1</b>	<b>12</b>				
	<b>PSY2933</b>	<b>1</b>	<b>18</b>	<b>1</b>	<b>29</b>	<b>1</b>	<b>25</b>
	<b>PSY2934</b>	<b>4</b>	<b>40</b>	<b>4</b>	<b>20</b>	<b>2</b>	<b>18</b>
	<b>PSY2935</b>	<b>1</b>	<b>16</b>	<b>1</b>	<b>10</b>		
	<b>PSY2936</b>	<b>1</b>	<b>34</b>	<b>1</b>	<b>23</b>	<b>1</b>	<b>14</b>
	<b>REL2300</b>	<b>13</b>	<b>27</b>	<b>7</b>	<b>24</b>	<b>6</b>	<b>26</b>
	<b>SOP2002</b>	<b>4</b>	<b>24</b>	<b>5</b>	<b>21</b>	<b>4</b>	<b>22</b>
	<b>SOP2772</b>	<b>2</b>	<b>56</b>	<b>2</b>	<b>43</b>	<b>2</b>	<b>29</b>
	<b>SYG2000</b>	<b>18</b>	<b>30</b>	<b>21</b>	<b>30</b>	<b>18</b>	<b>33</b>
	<b>SYG2010</b>	<b>1</b>	<b>33</b>	<b>1</b>	<b>29</b>	<b>1</b>	<b>38</b>
	<b>SYG2430</b>	<b>2</b>	<b>33</b>	<b>1</b>	<b>16</b>	<b>1</b>	<b>15</b>
	<b>WOH2012</b>	<b>3</b>	<b>18</b>	<b>2</b>	<b>26</b>	<b>2</b>	<b>27</b>
<b>WOH2022</b>					<b>1</b>	<b>29</b>	
	<b>Total</b>	<b>368</b>	<b>32</b>	<b>360</b>	<b>31</b>	<b>340</b>	<b>33</b>

Years are reporting years, SU-SP.

Blank cells or missing years indicate no enrollment.

To prevent data from skewing, the following instructional methods are excluded: CL - Clinical, CO - Co-op, D - Directed Independent Stu, IN - Internship (BSED), JT - On Job Training, LB - Lab, OL - Open Lab



## Average Class Size – Multiple Methods Only (1 of 2)

Major or Dept., Associated Courses and Instructional Method			2012-2013		2013-2014		2014-2015	
			Sections	Avg. Size	Sections	Avg. Size	Sections	Avg. Size
2007 - Human Serv.- Addictions Spec.	HUS2500	Lecture			1	26		
		Online			1	18	3	14
		Total			2	22	3	14
	PSB2442	Lecture			2	13	1	12
		Online					1	14
		Total			2	13	2	13
Behavioral & Social Sciences	AMH2010	Lecture	13	24	15	19	9	27
		Online	8	24	9	25	10	25
		Total	21	24	24	22	19	26
	AMH2020	Lecture	19	24	16	23	16	24
		Online	10	32	12	33	12	31
		Total	29	27	28	27	28	27
	AMH2058	Lecture	3	11				
		Online			1	24	2	30
		Total	3	11	1	24	2	30
	AMH2091	Lecture	3	12	2	14	2	22
		Online	3	36	3	32	3	31
		Total	6	24	5	25	5	27
	CLP2140	Lecture	7	43	6	35	4	31
		Online	2	47	3	49	3	37
		Total	9	44	9	40	7	33
	CPO2001	Hybrid			3	17	3	20
		Lecture	5	21	3	21	4	27
		Online	3	27	4	14	5	21
		Total	8	23	10	17	12	23
	DEP2004	Lecture	30	34	27	29	23	32
		Online	10	34	11	46	15	36
Total		40	34	38	34	38	34	
GEO2000	Lecture	13	33	12	33	12	32	
	Online	10	39	12	44	13	41	
	Total	23	36	24	38	25	37	
GEO2420	Lecture	2	28	2	30	2	24	
	Online	4	43	5	36	6	35	
	Total	6	38	7	34	8	32	

## Average Class Size – Multiple Methods Only (2 of 2)

Dept., Associated Courses and Instructional Method			2012-2013		2013-2014		2014-2015	
			Sections	Avg. Size	Sections	Avg. Size	Sections	Avg. Size
<b>Behavioral &amp; Social Sciences</b>	INR2002	Lecture	5	30	6	33	5	25
		Online	4	39	4	32	3	39
		<b>Total</b>	9	34	10	33	8	30
	PHI2001	Lecture	7	31	7	29	4	27
		Online			4	35	5	37
		<b>Total</b>	7	31	11	31	9	32
	PHI2600	Lecture	4	30	4	28	3	31
		Online					2	44
		<b>Total</b>	4	30	4	28	5	36
	POS2041	Lecture	19	33	16	29	17	29
		Online	11	33	10	29	9	34
		<b>Total</b>	30	33	26	29	26	31
	POS2112	Lecture	2	39	2	39	2	25
		Online	4	29	6	30	6	29
		<b>Total</b>	6	32	8	32	8	28
	PPE2001	Lecture	6	29	5	27	3	21
		Online					2	37
		<b>Total</b>	6	29	5	27	5	28
	PSY1012	Lecture	71	35	64	36	59	40
		Online	19	37	19	47	19	53
<b>Total</b>		90	36	83	38	78	43	
PSY2933	Lecture	1	18	1	29			
	Online					1	25	
	<b>Total</b>	1	18	1	29	1	25	
REL2300	Hybrid	3	16	3	17	3	21	
	Lecture	8	28	4	28	3	31	
	Online	2	37					
	<b>Total</b>	13	27	7	24	6	26	
SOP2002	Lecture	4	24	4	21	4	22	
	Online			1	22			
	<b>Total</b>	4	24	5	21	4	22	
SYG2000	Lecture	13	25	12	23	9	25	
	Online	5	43	9	39	9	42	
	<b>Total</b>	18	30	21	30	18	33	

To prevent data from skewing, the following instructional methods are excluded: labs associated with lectures, Private/Performance, OJT, clinicals, co-op, DIS, field trips and internships. Years are reporting years, SU-SP. Blank cells or missing years indicate no enrollment.

## Average Class Size Totals

Major or Dept. and Instructional Method		2012-2013		2013-2014		2014-2015	
		Sections	Avg. Size	Sections	Avg. Size	Sections	Avg. Size
2007- Human Serv.- Addictions Spec.	Lecture	1	28	18	18	19	17
	Online			1	18	4	14
	Total	1	28	19	18	23	16
Behavioral & Social Sciences	Hybrid	4	14	6	17	6	21
	Lecture	253	31	223	29	193	31
	Online	111	34	131	35	141	36
	Total	368	32	360	31	340	33
<b>Total</b>		<b>369</b>	<b>32</b>	<b>379</b>	<b>31</b>	<b>363</b>	<b>32</b>

### College Total

Instructional Method	2012-2013	2013-2014	2014-2015
	Avg. Size	Avg. Size	Avg. Size
Hybrid	22	22	22
Lecture	23	23	22
Online	27	28	29
Private/Performance	2	2	2
<b>College Total</b>	<b>24</b>	<b>24</b>	<b>24</b>

To prevent data from skewing, the following instructional methods are excluded: labs associated with lectures, Private/Performance, OJT, clinicals, co-op, DIS, field trips and internships. Years are reporting years, SU-SP. Blank cells or missing years indicate no enrollment.

## Course Success Rate (1 of 3)

Major and Associated Courses		2012-2013		2013-2014		2014-2015	
		Attempted	% Successful	Attempted	% Successful	Attempted	% Successful
2007- Human Serv.- Addictions Spec.	HUS1001			33	91%	70	80%
	HUS1332	28	96%	10	100%	14	100%
	HUS1400			24	96%	51	94%
	HUS1421			21	100%	16	88%
	HUS1423			26	96%	26	96%
	HUS1424			34	97%	28	100%
	HUS1450			4	100%	20	100%
	HUS1850			15	87%	15	100%
	HUS2308			1	100%	20	100%
	HUS2424			47	94%		
	HUS2425					18	83%
	HUS2441			36	94%	21	95%
	HUS2500			44	84%	41	66%
	HUS2520			24	96%	22	95%
	HUS2851			22	91%	16	100%
	HUS2852			20	95%	13	92%
	HUS2933			29	100%	15	87%
	PSB2442			26	92%	30	83%
	<b>Major Total</b>	<b>28</b>	<b>96%</b>	<b>416</b>	<b>94%</b>	<b>436</b>	<b>89%</b>

## Course Success Rate (2 of 3)

Dept. and Associated Courses		2012-2013		2013-2014		2014-2015	
		Attempted	% Successful	Attempted	% Successful	Attempted	% Successful
Behavioral & Social Sciences	AMH2010	499	67%	519	69%	496	68%
	AMH2020	779	73%	759	71%	760	75%
	AMH2042			1	100%		
	AMH2057	30	30%	37	57%	24	58%
	AMH2058	32	72%	24	67%	60	77%
	AMH2059	27	59%	37	84%	38	82%
	AMH2091	145	65%	123	63%	137	53%
	CLP2140	392	85%	359	74%	236	76%
	CPO2001	187	73%	172	65%	272	72%
	DEP2001	38	89%	57	65%	54	80%
	DEP2004	1351	85%	1285	83%	1286	81%
	DEP2402	39	77%	36	72%	23	78%
	DEP2481	67	90%	46	85%	20	90%
	EUH2000	99	61%	46	63%	40	65%
	EUH2001	46	54%	18	78%		
	EUH2905	8	88%	1	100%	1	100%
	EXP2420	71	83%	68	87%	58	81%
	GEO2000	818	83%	913	85%	918	80%
	GEO2420	228	84%	240	82%	254	77%
	IDS2191	14	100%				
	INP1390	103	81%	80	76%	82	80%
	INR2002	308	83%	326	85%	242	85%
	<b>Total</b>	<b>11711</b>	<b>78%</b>	<b>11283</b>	<b>76%</b>	<b>11237</b>	<b>76%</b>

## Course Success Rate (3 of 3)

Dept. and Associated Courses		2012-2013		2013-2014		2014-2015	
		Attempted	% Successful	Attempted	% Successful	Attempted	% Successful
Behavioral & Social Sciences	PHI2001	217	90%	340	81%	292	78%
	PHI2100	13	85%	13	54%	19	89%
	PHI2600	118	89%	112	88%	180	82%
	POS2001	28	39%	93	51%	101	59%
	POS2041	987	81%	758	78%	797	76%
	POS2112	191	76%	257	77%	226	67%
	PPE2001	178	82%	144	91%	143	82%
	PSY1012	3201	76%	3184	73%	3359	74%
	PSY2931			2	50%	2	100%
	PSY2932	12	75%				
	PSY2933	24	83%	35	97%	25	72%
	PSY2934	159	91%	81	90%	36	89%
	PSY2935	16	100%	10	90%		
	PSY2936	34	71%	23	74%	14	93%
	PSY2937	2	100%				
	REL2300	346	76%	165	77%	154	81%
	SOP2002	96	89%	105	84%	89	98%
	SOP2772	111	74%	85	74%	58	83%
	SYG2000	545	69%	632	66%	603	72%
	SYG2010	33	61%	29	52%	38	71%
	SYG2430	66	76%	16	88%	16	69%
	WOH2012	53	64%	52	63%	54	54%
	WOH2022					30	53%
	<b>Total</b>	<b>11711</b>	<b>78%</b>	<b>11283</b>	<b>76%</b>	<b>11237</b>	<b>76%</b>

 Indicates a 70% success rate or higher

Source: IR Program Assessment Data

## Course Success Rate by Campus – Multiple Campuses Only (1 of 4)

Major, Associated Courses and Campus			2012-2013		2013-2014		2014-2015	
			Attempted	% Successful	Attempted	% Successful	Attempted	% Successful
2007- Human Serv.- Addictions Spec.	HUS1001	Daytona			33	91%	16	69%
		Flagler/Palm Cst					54	83%
		Total			33	91%	70	80%
	HUS1332	Daytona	28	96%	10	100%	13	100%
		Flagler/Palm Cst					1	100%
		Total	28	96%	10	100%	14	100%
	HUS1400	Daytona			24	96%	19	100%
		Flagler/Palm Cst					32	91%
		Total			24	96%	51	94%
	HUS2441	Daytona			36	94%	2	100%
		Flagler/Palm Cst					19	95%
		Total			36	94%	21	95%

Excludes fully online courses

 Indicates a 70% success rate or higher

Source: IR Program Assessment Data

## Course Success Rate by Campus – Multiple Campuses Only (2 of 4)

Dept., Associated Courses and Campus			2012-2013		2013-2014		2014-2015	
			Attempted	% Successful	Attempted	% Successful	Attempted	% Successful
Behavioral & Social Sciences	AMH2010	Daytona	117	61%	117	51%	85	59%
		Deland	58	79%	59	90%	93	82%
		Deltona	18	67%	14	79%		
		Flagler/Palm Cst	79	78%	73	74%	64	63%
		New Smyrna Beach	36	78%	28	82%		
		Total	308	71%	291	69%	242	69%
	AMH2020	Daytona	152	63%	83	67%	110	64%
		Deland	128	88%	125	88%	116	84%
		Deltona	56	66%	42	50%	52	62%
		Flagler/Palm Cst	110	79%	95	81%	105	75%
		New Smyrna Beach	16	50%	19	79%		
		Total	462	74%	364	77%	383	73%
	AMH2058	Daytona	10	60%				
		Deland	9	78%				
		Flagler/Palm Cst	13	77%				
		Total	32	72%				
	AMH2059	Deland	27	59%	37	84%	28	79%
		Flagler/Palm Cst					10	90%
		Total	27	59%	37	84%	38	82%
	AMH2091	Daytona	25	80%	27	59%	44	55%
		Flagler/Palm Cst	11	73%				
		Total	36	78%	27	59%	44	55%
	CLP2140	Daytona	94	93%	87	91%	69	93%
		Deland	109	90%	61	75%		
		Flagler/Palm Cst	81	90%	65	82%	55	89%
		New Smyrna Beach	15	67%				
		Total	299	90%	213	84%	124	91%
	CPO2001	Daytona	46	80%	98	60%	117	71%
		Deland	48	96%	17	82%	52	100%
		Flagler/Palm Cst	11	100%				
		Total	105	90%	115	63%	169	80%
	DEP2004	Daytona	565	88%	387	89%	361	86%
		Deland	298	89%	218	85%	171	84%
Deltona				35	69%	71	85%	
Flagler/Palm Cst		105	95%	123	93%	125	98%	
New Smyrna Beach		39	72%	21	90%	21	62%	
Total		1007	88%	784	88%	749	87%	
DEP2481	Daytona	67	90%	46	85%	19	89%	
	Flagler/Palm Cst					1	100%	
	Total	67	90%	46	85%	20	90%	

Indicates a 70% success rate or higher

Excludes fully online courses

Source: IR Program Assessment Data



## Course Success Rate by Campus – Multiple Campuses Only (3 of 4)

Dept., Associated Courses and Campus			2012-2013		2013-2014		2014-2015	
			Attempted	% Successful	Attempted	% Successful	Attempted	% Successful
Behavioral & Social Sciences	EUH2905	Deland	8	88%				
		Flagler/Palm Cst			1	100%	1	100%
		Total	8	88%	1	100%	1	100%
	GEO2000	Daytona	262	89%	260	91%	269	86%
		Deland	155	79%	130	92%	110	92%
		Deltona	14	93%				
		New Smyrna Beach					9	67%
		Total	431	86%	390	92%	388	87%
	INR2002	Daytona	77	90%	79	89%	78	79%
		Deland	57	93%	79	92%	20	95%
		Flagler/Palm Cst	18	89%	39	90%	27	93%
		Total	152	91%	197	90%	125	85%
	PHI2001	Daytona	100	91%	86	85%	77	95%
		Deland	75	92%	59	92%		
		Flagler/Palm Cst	42	86%	55	85%	31	90%
		Total	217	90%	200	87%	108	94%
	PHI2600	Daytona	80	91%	80	84%	42	93%
		Flagler/Palm Cst	38	84%	32	100%	51	90%
		Total	118	89%	112	88%	93	91%
	POS2041	Daytona	280	81%	241	76%	225	67%
		Deland	216	95%	71	89%	102	94%
		Deltona			21	86%	22	77%
		Flagler/Palm Cst	132	71%	119	89%	128	86%
		New Smyrna Beach			19	84%	16	75%
		Total	628	84%	471	82%	493	78%
	POS2112	Daytona	77	64%	77	78%	33	67%
		Flagler/Palm Cst					17	65%
Total		77	64%	77	78%	50	66%	
PPE2001	Daytona	42	90%	38	82%	19	100%	
	Deland	60	80%	45	96%	1	100%	
	Flagler/Palm Cst	61	80%	61	93%	49	82%	
	New Smyrna Beach	15	73%					
	Total	178	82%	144	91%	69	87%	

Indicates a 70% success rate or higher

Excludes fully online courses

Source: IR Program Assessment Data

## Course Success Rate by Campus – Multiple Campuses Only (4 of 4)

Dept., Associated Courses and Campus			2012-2013		2013-2014		2014-2015	
			Attempted	% Successful	Attempted	% Successful	Attempted	% Successful
Behavioral & Social Sciences	PSY1012	Daytona	1135	79%	1168	77%	1194	79%
		Deland	593	75%	435	73%	470	76%
		Deltona	218	85%	219	74%	177	65%
		Flagler/Palm Cst	361	87%	345	83%	427	83%
		New Smyrna Beach	198	68%	131	69%	87	72%
		Total	2505	79%	2298	77%	2355	78%
	PSY2933	Daytona	2	100%	4	100%		
		Flagler/Palm Cst	22	82%	31	97%		
		Total	24	83%	35	97%		
	PSY2934	Deland	86	95%	39	87%		
		Flagler/Palm Cst	73	85%	42	93%	36	89%
		Total	159	91%	81	90%	36	89%
	REL2300	Daytona	147	74%	114	73%	111	82%
		Deland	90	89%	27	96%		
		Deltona	22	91%			20	85%
		New Smyrna Beach	13	100%	24	75%	23	74%
		Total	272	82%	165	77%	154	81%
	SOP2002	Daytona	56	88%	48	92%	57	96%
		Deland	18	83%	14	93%	15	100%
		Flagler/Palm Cst	22	95%	21	81%	17	100%
		Total	96	89%	83	89%	89	98%
	SYG2000	Daytona	229	70%	228	73%	205	78%
		Deland	87	80%	53	91%	24	88%
		New Smyrna Beach	13	92%				
		Total	329	74%	281	77%	229	79%
	WOH2012	Daytona	40	65%	52	63%	54	54%
		Flagler/Palm Cst	13	62%				
Total		53	64%	52	63%	54	54%	

## Course Success Rate by Campus Totals

Major or Dept. and Campus		2012-2013		2013-2014		2014-2015	
		Attempted	% Successful	Attempted	% Successful	Attempted	% Successful
2007- Human Serv.- Addictions Spec.	Daytona	28	96%	398	95%	275	94%
	Flagler/Palm Cst					106	88%
	Total	28	96%	398	95%	381	92%
Behavioral & Social Sciences	Daytona	3810	80%	3488	78%	3308	79%
	Deland	2199	84%	1529	84%	1249	84%
	Deltona	328	82%	331	72%	342	70%
	Flagler/Palm Cst	1208	84%	1113	86%	1144	84%
	New Smyrna Beach	347	71%	242	75%	156	71%
	Total	7892	82%	6703	81%	6199	80%
Total		7920	82%	7101	81%	6580	81%

Excludes fully online courses

 Indicates a 70% success rate or higher

Source: IR Program Assessment Data

## Course Success Rate By Instructional Method – Multiple Methods Only (1 of 4)

Major, Associated Courses and Instructional Method			2012-2013		2013-2014		2014-2015	
			Attempted	% Successful	Attempted	% Successful	Attempted	% Successful
2007- Human Serv.- Addictions Spec.	HUS1332	DIS			1	100%	1	100%
		Lecture	28	96%	9	100%	13	100%
		Total	28	96%	10	100%	14	100%
	HUS1400	DIS					1	100%
		Lecture			24	96%	50	94%
		Total			24	96%	51	94%
	HUS1421	DIS			1	100%		
		Lecture			20	100%	16	88%
		Total			21	100%	16	88%
	HUS1423	DIS			3	100%		
		Lecture			23	96%	26	96%
		Total			26	96%	26	96%
	HUS1424	DIS					1	100%
		Lecture			34	97%	27	100%
		Total			34	97%	28	100%
	HUS1450	DIS			4	100%		
		Lecture					20	100%
		Total			4	100%	20	100%
	HUS2308	DIS			1	100%	5	100%
		Lecture					15	100%
		Total			1	100%	20	100%
HUS2441	DIS					2	100%	
	Lecture			36	94%	19	95%	
	Total			36	94%	21	95%	
HUS2500	Lecture			26	100%			
	Online			18	61%	41	66%	
	Total			44	84%	41	66%	
PSB2442	DIS					4	100%	
	Lecture			26	92%	12	92%	
	Online					14	71%	
	Total			26	92%	30	83%	

## Course Success Rate By Instructional Method – Multiple Methods Only (2 of 4)

Dept., Associated Courses and Instructional Method			2012-2013		2013-2014		2014-2015	
			Attempted	% Successful	Attempted	% Successful	Attempted	% Successful
Behavioral & Social Sciences	AMH2010	Lecture	308	71%	291	69%	242	69%
		Online	191	60%	228	68%	254	67%
		Total	499	67%	519	69%	496	68%
	AMH2020	Lecture	462	74%	364	77%	383	73%
		Online	317	73%	395	66%	377	76%
		Total	779	73%	759	71%	760	75%
	AMH2058	Lecture	32	72%				
		Online			24	67%	60	77%
		Total	32	72%	24	67%	60	77%
	AMH2091	Lecture	36	78%	27	59%	44	55%
		Online	109	61%	96	65%	93	53%
		Total	145	65%	123	63%	137	53%
	CLP2140	DIS			2	100%	2	100%
		Lecture	299	90%	211	83%	122	91%
		Online	93	71%	146	60%	112	60%
		Total	392	85%	359	74%	236	76%
	CPO2001	Hybrid			52	58%	61	79%
		Lecture	105	90%	63	68%	108	81%
		Online	82	51%	57	67%	103	60%
		Total	187	73%	172	65%	272	72%
DEP2004	DIS	1	100%	6	100%	4	100%	
	Lecture	1006	88%	778	88%	745	87%	
	Online	344	77%	501	76%	537	74%	
	Total	1351	85%	1285	83%	1286	81%	
DEP2481	DIS					1	100%	
	Lecture	67	90%	46	85%	19	89%	
	Total	67	90%	46	85%	20	90%	
EUH2000	DIS	7	100%					
	Online	92	58%	46	63%	40	65%	
	Total	99	61%	46	63%	40	65%	
EUH2905	DIS			1	100%	1	100%	
	Hybrid	8	88%					
	Total	8	88%	1	100%	1	100%	
GEO2000	Lecture	431	86%	390	92%	388	87%	
	Online	387	80%	523	80%	530	75%	
	Total	818	83%	913	85%	918	80%	

## Course Success Rate By Instructional Method – Multiple Methods Only (3 of 4)

Dept., Associated Courses and Instructional Method			2012-2013		2013-2014		2014-2015	
			Attempted	% Successful	Attempted	% Successful	Attempted	% Successful
Behavioral & Social Sciences	GEO2420	Lecture	56	86%	60	95%	47	98%
		Online	172	83%	180	77%	207	72%
		Total	228	84%	240	82%	254	77%
	INR2002	Lecture	152	91%	197	90%	125	85%
		Online	156	76%	129	78%	117	85%
		Total	308	83%	326	85%	242	85%
	PHI2001	Lecture	217	90%	200	87%	108	94%
		Online			140	71%	184	69%
		Total	217	90%	340	81%	292	78%
	PHI2600	Lecture	118	89%	112	88%	93	91%
		Online					87	71%
		Total	118	89%	112	88%	180	82%
	POS2041	Lecture	628	84%	471	82%	493	78%
		Online	359	75%	287	72%	304	73%
		Total	987	81%	758	78%	797	76%
	POS2112	Lecture	77	64%	77	78%	50	66%
		Online	114	84%	180	77%	176	67%
		Total	191	76%	257	77%	226	67%
	PPE2001	DIS	4	100%	7	100%	5	100%
		Lecture	174	82%	137	91%	64	86%
		Online					74	77%
		Total	178	82%	144	91%	143	82%
	PSY1012	DIS					1	100%
		Lecture	2505	79%	2298	77%	2354	78%
Online		696	66%	886	65%	1004	64%	
Total		3201	76%	3184	73%	3359	74%	

## Course Success Rate By Instructional Method – Multiple Methods Only (4 of 4)

Dept., Associated Courses and Instructional Method			2012-2013		2013-2014		2014-2015	
			Attempted	% Successful	Attempted	% Successful	Attempted	% Successful
Behavioral & Social Sciences	PSY2933	DIS	6	83%	6	100%		
		Lecture	18	83%	29	97%		
		Online					25	72%
		Total	24	83%	35	97%	25	72%
	REL2300	Hybrid	47	81%	52	62%	62	79%
		Lecture	225	82%	113	84%	92	83%
		Online	74	55%				
		Total	346	76%	165	77%	154	81%
	SOP2002	DIS					1	100%
		Lecture	96	89%	83	89%	88	98%
		Online			22	64%		
		Total	96	89%	105	84%	89	98%
	SYG2000	DIS					1	100%
		Lecture	329	74%	281	77%	228	79%
		Online	216	62%	351	58%	374	68%
		Total	545	69%	632	66%	603	72%
	SYG2430	DIS					1	100%
		Online	66	76%	16	88%	15	67%
		Total	66	76%	16	88%	16	69%
	WOH2022	DIS					1	100%
		Online					29	52%
Total						30	53%	

## Course Success Rate By Instructional Method Totals

Major or Dept., and Instructional Method		2012-2013		2013-2014		2014-2015	
		Attempted	% Successful	Attempted	% Successful	Attempted	% Successful
2007- Human Serv.- Addictions Spec.	DIS			10	100%	14	100%
	Lecture	28	96%	331	96%	323	91%
	OJT			57	91%	44	98%
	Online			18	61%	55	67%
	Total	28	96%	416	94%	436	89%
Behavioral & Social Sciences	DIS	20	95%	25	96%	20	100%
	Hybrid	55	82%	104	60%	123	79%
	Lecture	7817	82%	6574	81%	6056	80%
	Online	3819	71%	4580	69%	5038	70%
	Total	11711	78%	11283	76%	11237	76%
Total		11739	78%	11699	77%	11673	76%

DSC	Hybrid		82%		81%		83%
	Lecture		77%		77%		78%
	Online		76%		75%		76%



## Course Success Rates- Multiple Sessions or Sub-sessions Only (1 of 7)

Major, Associated Courses and Sub-session				2012-2013		2013-2014		2014-2015	
				Attempted	% Successful	Attempted	% Successful	Attempted	% Successful
2007- Human Serv.- Addictions Spec.	HUS1001	FA	Full term			33	91%	38	82%
		SP	Full term					32	78%
		Total				33	91%	70	80%
	HUS1332	FA	Full term					13	100%
		SP	Full term	28	96%	9	100%	1	100%
		SU	Full term			1	100%		
		Total		28	96%	10	100%	14	100%
	HUS1400	FA	Full term					18	100%
		SP	Full term			24	96%	32	91%
		SU	Full term					1	100%
		Total				24	96%	51	94%
	HUS1421	FA	Full term			20	100%	8	75%
		SP	Full term			1	100%	8	100%
		Total				21	100%	16	88%
	HUS1423	FA	Full term			23	96%	15	93%
		SP	Full term			3	100%	11	100%
		Total				26	96%	26	96%
	HUS1424	FA	Full term			16	94%	17	100%
		SP	Full term			18	100%	11	100%
		Total				34	97%	28	100%
	HUS1850	FA	Full term			3	100%	2	100%
		SP	Full term			12	83%	6	100%
		SU	Full term					7	100%
		Total				15	87%	15	100%

Years are reporting years, SU-SP. █ Indicates a 70% success rate or higher  
Blank cells or missing years indicate no enrollment.

Source: IR Program Assessment Data

## Course Success Rates- Multiple Sessions or Sub-sessions Only (2 of 7)

Major, Associated Courses and Sub-session				2012-2013		2013-2014		2014-2015	
				Attempted	% Successful	Attempted	% Successful	Attempted	% Successful
2007 - Human Serv.- Addictions Spec.	HUS2308	FA	Full term					4	100%
		SP	Full term			1	100%	1	100%
		SU	Full term					15	100%
		Total				1	100%	20	100%
	HUS2424	FA	Full term			27	93%		
		SP	Full term			20	95%		
		Total				47	94%		
	HUS2441	FA	Full term			14	93%	19	95%
		SP	Full term			22	95%		
		SU	Full term					2	100%
		Total				36	94%	21	95%
	HUS2500	FA	Full term			18	61%	8	63%
		SP	Full term			26	100%	26	65%
		SU	Full term					7	71%
		Total				44	84%	41	66%
	HUS2520	FA	Full term			8	88%		
		SP	Full term			16	100%	22	95%
		Total				24	96%	22	95%
	HUS2851	FA	Full term			19	95%	7	100%
		SP	Full term			3	67%	4	100%
SU		Full term					5	100%	
Total				22	91%	16	100%		
HUS2852	FA	Full term			6	100%	3	100%	
	SP	Full term			14	93%	7	86%	
	SU	Full term					3	100%	
	Total				20	95%	13	92%	
HUS2933	FA	A term			23	100%	15	87%	
	SP	A term			6	100%			
	Total				29	100%	15	87%	
PSB2442	FA	Full term					12	92%	
	SP	B term			6	100%			
		Full term			20	90%	4	100%	
		Session Total			26	92%	4	100%	
	SU	Full term					14	71%	
Total				26	92%	30	83%		

Years are reporting years, SU-SP. █ Indicates a 70% success rate or higher  
Blank cells or missing years indicate no enrollment.

## Course Success Rates- Multiple Sessions or Sub-sessions Only (3 of 7)

Dept., Associated Courses and Sub-session				2012-2013		2013-2014		2014-2015	
				Attempted	% Successful	Attempted	% Successful	Attempted	% Successful
Behavioral & Social Sciences	AMH2010	FA	Full term	206	69%	206	67%	201	67%
		SP	B term	18	67%	14	79%	21	57%
			Full term	188	62%	166	63%	176	65%
		SU	Full term	87	72%	133	77%	98	78%
			Total	499	67%	519	69%	496	68%
	AMH2020	FA	B term	88	70%	63	75%	66	80%
			Full term	245	77%	256	72%	239	70%
			Session Total	333	75%	319	73%	305	72%
		SP	A term	17	71%				
			B term	40	65%	79	61%	45	76%
			Full term	313	70%	261	72%	302	73%
		SU	Full term	76	82%	100	70%	108	85%
			Total	779	73%	759	71%	760	75%
	AMH2057	FA	Full term			13	46%	14	64%
		SP	Full term	30	30%	24	63%	10	50%
		Total	30	30%	37	57%	24	58%	
	AMH2058	FA	Full term	32	72%	24	67%	34	82%
		SP	Full term					26	69%
		Total	32	72%	24	67%	60	77%	
	AMH2059	FA	Full term					10	90%
		SP	Full term	27	59%	37	84%	28	79%
		Total	27	59%	37	84%	38	82%	
	AMH2091	FA	Full term	44	57%	47	53%	54	52%
		SP	Full term	53	62%	40	68%	53	47%
		SU	Full term	48	75%	36	72%	30	67%
		Total	145	65%	123	63%	137	53%	
	CLP2140	FA	Full term	188	87%	151	81%	97	84%
		SP	Full term	204	83%	165	74%	102	74%
		SU	Full term			43	49%	37	65%
		Total	392	85%	359	74%	236	76%	
	CPO2001	FA	B term			25	80%	24	75%
			Full term	85	72%	37	59%	73	73%
			Session Total	85	72%	62	68%	97	73%
SP		B term					16	50%	
		Full term	81	80%	104	63%	149	74%	
		Session Total	81	80%	104	63%	165	72%	
SU		Full term	21	48%	6	67%	10	80%	
Total	187	73%	172	65%	272	72%			

Years are reporting years, SU-SP. █ Indicates a 70% success rate or higher  
Blank cells or missing years indicate no enrollment.

## Course Success Rates- Multiple Sessions or Sub-sessions Only (4 of 7)

Dept., Associated Courses and Sub-session				2012-2013		2013-2014		2014-2015	
				Attempted	% Successful	Attempted	% Successful	Attempted	% Successful
Behavioral & Social Science	DEP2004	FA	A term	23	96%				
			B term			43	74%	99	74%
			Full term	548	88%	445	83%	429	82%
			Session Total	571	88%	488	82%	528	80%
		SP	A term					38	79%
			B term	33	70%	130	73%	77	62%
			Full term	507	80%	403	83%	414	81%
			Session Total	540	79%	533	81%	529	78%
		SU	Full term	240	92%	264	90%	229	90%
	Total			1351	85%	1285	83%	1286	81%
	DEP2481	FA	Full term	28	82%	26	85%	1	100%
		SP	Full term	39	95%	20	85%	19	89%
		Total			67	90%	46	85%	20
	EUH2000	FA	Full term	31	61%	11	64%	19	58%
		SP	Full term	24	54%	23	57%	21	71%
		SU	Full term	44	64%	12	75%		
		Total			99	61%	46	63%	40
	EUH2001	FA	Full term	27	52%	9	78%		
		SP	Full term	19	58%	9	78%		
		Total			46	54%	18	78%	
	EUH2905	FA	Full term					1	100%
		SP	Full term	8	88%	1	100%		
		Total			8	88%	1	100%	1
	EXP2420	FA	Full term	33	85%	29	93%	29	83%
		SP	Full term	38	82%	39	82%	29	79%
		Total			71	83%	68	87%	58
	GEO2000	FA	B term			54	61%	43	60%
Full term			340	81%	372	88%	321	82%	
Session Total			340	81%	426	85%	364	79%	
SP		B term			33	58%	37	46%	
		Full term	344	81%	326	88%	359	81%	
		Session Total	344	81%	359	85%	396	77%	
SU		Full term	134	93%	128	86%	158	91%	
Total			818	83%	913	85%	918	80%	
GEO2420	FA	Full term	69	86%	95	81%	80	79%	
	SP	Full term	101	77%	97	84%	117	74%	
	SU	Full term	58	93%	48	79%	57	81%	
	Total			228	84%	240	82%	254	77%
INP1390	FA	Full term	36	78%	29	83%	24	83%	
	SP	Full term	39	82%	34	68%	27	74%	
	SU	Full term	28	82%	17	82%	31	84%	
	Total			103	81%	80	76%	82	80%

Years are reporting years, SU-SP.  Indicates a 70% success rate or higher

Blank cells or missing years indicate no enrollment.

## Course Success Rates- Multiple Sessions or Sub-sessions Only (5 of 7)

Dept., Associated Courses and Sub-session			2012-2013		2013-2014		2014-2015		
			Attempted	% Successful	Attempted	% Successful	Attempted	% Successful	
Behavioral & Social Sciences	INR2002	FA	Full term	99	86%	145	82%	121	85%
		SP	Full term	133	85%	124	90%	91	86%
		SU	Full term	76	76%	57	84%	30	83%
		Total		308	83%	326	85%	242	85%
	PHI2001	FA	Full term	128	88%	127	82%	92	79%
			B term			35	57%		
		SP	Full term	89	94%	128	83%	125	79%
			Session Total	89	94%	163	77%	125	79%
		SU	Full term			50	88%	75	75%
			Total		217	90%	340	81%	292
	PHI2100	FA	Full term			13	54%		
		SP	Full term	13	85%			19	89%
		Total		13	85%	13	54%	19	89%
	PHI2600	FA	Full term	59	86%	51	90%	100	85%
		SP	Full term	59	92%	61	87%	80	78%
		Total		118	89%	112	88%	180	82%
	POS2001	FA	Full term			40	55%	46	65%
		SP	Full term	28	39%	38	50%	36	53%
		SU	Full term			15	40%	19	58%
		Total		28	39%	93	51%	101	59%
	POS2041	FA	B term	55	67%	32	78%	33	73%
			Full term	413	79%	287	72%	342	74%
			Session Total	468	78%	319	73%	375	74%
		SP	B term	37	62%	28	71%	60	70%
			Full term	355	83%	274	79%	259	79%
			Session Total	392	81%	302	78%	319	77%
		SU	Full term	127	90%	137	91%	103	83%
			Total		987	81%	758	78%	797
	POS2112	FA	B term			43	93%	24	79%
			Full term	70	66%	71	75%	83	59%
Session Total			70	66%	114	82%	107	64%	
SP		B term			31	48%	25	76%	
		Full term	81	79%	66	83%	40	58%	
		Session Total	81	79%	97	72%	65	65%	
SU		Full term	40	88%	46	78%	54	76%	
	Total		191	76%	257	77%	226	67%	
PPE2001	FA	Full term	98	83%	84	90%	70	83%	
	SP	Full term	80	81%	57	91%	70	80%	
	SU	Full term			3	100%	3	100%	
	Total		178	82%	144	91%	143	82%	

Years are reporting years, SU-SP. █ Indicates a 70% success rate or higher  
Blank cells or missing years indicate no enrollment.

## Course Success Rates- Multiple Sessions or Sub-sessions Only (6 of 7)

Dept., Associated Courses and Sub-session			2012-2013		2013-2014		2014-2015		
			Attempted	% Successful	Attempted	% Successful	Attempted	% Successful	
Behavioral & Social Science	PSY1012	FA	A term	77	97%				
			B term	171	78%	232	73%	182	63%
			Full term	1218	77%	1289	73%	1444	77%
			Session Total	1466	78%	1521	73%	1626	75%
		SP	A term	24	92%	34	76%	18	89%
			B term	118	63%	82	43%	109	55%
			Full term	1157	71%	1145	73%	1213	73%
			Session Total	1299	71%	1261	71%	1340	71%
		SU	Full term	436	83%	402	81%	393	77%
		Total			3201	76%	3184	73%	3359
	PSY2931	FA	Full term			1	0%	2	100%
		SP	Full term			1	100%		
		Total					2	50%	2
	PSY2933	FA	Full term	1	100%	3	100%		
		SP	Full term	22	82%	32	97%	25	72%
		SU	Full term	1	100%				
		Total			24	83%	35	97%	25
	PSY2934	FA	Full term	65	94%	45	84%	15	93%
		SP	Full term	94	88%	36	97%	21	86%
		Total			159	91%	81	90%	36
	PSY2937	FA	Full term	1	100%				
		SP	Full term	1	100%				
		Total			2	100%			
	REL2300	FA	Full term	143	74%	46	83%	23	74%
		SP	Full term	175	75%	92	68%	131	82%
		SU	Full term	28	93%	27	96%		
		Total			346	76%	165	77%	154
SOP2002	FA	Full term	68	85%	77	81%	42	95%	
	SP	Full term	28	96%	28	93%	46	100%	
	SU	Full term					1	100%	
	Total			96	89%	105	84%	89	98%
SOP2772	FA	Full term	49	76%	44	73%	26	81%	
	SP	Full term	62	73%	41	76%	32	84%	
	Total			111	74%	85	74%	58	83%

Years are reporting years, SU-SP.  Indicates a 70% success rate or higher  
Blank cells or missing years indicate no enrollment.

## Course Success Rates- Multiple Sessions or Sub-sessions Only (7 of 7)

Dept., Associated Courses and Sub-session				2012-2013		2013-2014		2014-2015		
				Attempted	% Successful	Attempted	% Successful	Attempted	% Successful	
Behavioral & Social Science	SYG2000	FA	B term			33	52%	37	70%	
			Full term	216	69%	234	66%	199	72%	
			Session Total	216	69%	267	64%	236	72%	
		SP	B term			32	66%	63	70%	
			Full term	227	70%	221	68%	197	71%	
			Session Total	227	70%	253	68%	260	71%	
	SU	Full term	102	68%	112	67%	107	76%		
	Total				545	69%	632	66%	603	72%
	SYG2430	FA	Full term	38	68%	16	88%	15	67%	
		SP	Full term					1	100%	
		SU	Full term	28	86%					
		Total				66	76%	16	88%	16
	WOH2012	FA	Full term	34	68%	26	65%	31	61%	
		SP	Full term	19	58%	26	62%	23	43%	
		Total				53	64%	52	63%	54
	WOH2022	FA	Full term					1	100%	
		SP	Full term					29	52%	
		Total							30	53%

Years are reporting years, SU-SP. ■ Indicates a 70% success rate or higher  
Blank cells or missing years indicate no enrollment.

## Course Success Rates- Multiple Sessions or Sub-sessions Totals

Major or Dept. and Sub-session			2012-2013		2013-2014		2014-2015		
			Attempted	% Successful	Attempted	% Successful	Attempted	% Successful	
2007- Human Serv.- Addictions Spec.	FA	A term			23	100%	15	87%	
		Full term			187	91%	164	91%	
		Session Total			210	92%	179	91%	
	SP	A term			6	100%			
		B term			6	100%			
		Full term	28	96%	193	95%	203	88%	
		Session Total	28	96%	205	96%	203	88%	
	SU	Full term			1	100%	54	89%	
	Total			28	96%	416	94%	436	89%
	Behavioral & Social Sciences	FA	A term	100	97%				
B term			314	74%	525	73%	508	69%	
Full term			4693	79%	4396	76%	4301	76%	
Session Total			5107	79%	4921	76%	4809	76%	
SP		A term	41	83%	34	76%	56	82%	
		B term	246	64%	464	61%	453	63%	
		Full term	4743	76%	4228	76%	4376	75%	
		Session Total	5030	75%	4726	75%	4885	74%	
SU		Full term	1574	83%	1636	81%	1543	81%	
Total			11711	78%	11283	76%	11237	76%	
Total			11739	78%	11699	77%	11673	76%	



Placement Rates								
		2010/11		2011/12		2012/13		Average Annual Salary
Program Title	Major(s)	DSC%	FCS%	DSC%	FCS%	DSC%	FCS%	
Addictions Studies Specialization	0813	0%	56%	92%	86%	85%	73%	\$**,***
Human Services (Addictions Specialization)	2007	100%	88%	100%	94%	100%	96%	\$**,***

**Notes:**

Graduates in cohort year are tracked in the following year and reported 1 year later.

All continuing education outcomes are based on enrollment data for the fall semester and preliminary winter/spring semester.

All employment outcomes are based on the October - December quarterly data each year.

Individuals are only counted in one educational sector.

Full quarter earnings displayed only when 10 or more graduates are employed full time/full quarter.

# AMH2010 - Course Learning Outcomes 2014/2015

SLO 1: Demonstrate a general knowledge and understanding of the evolution of the American political system since 1865. (1, 3)

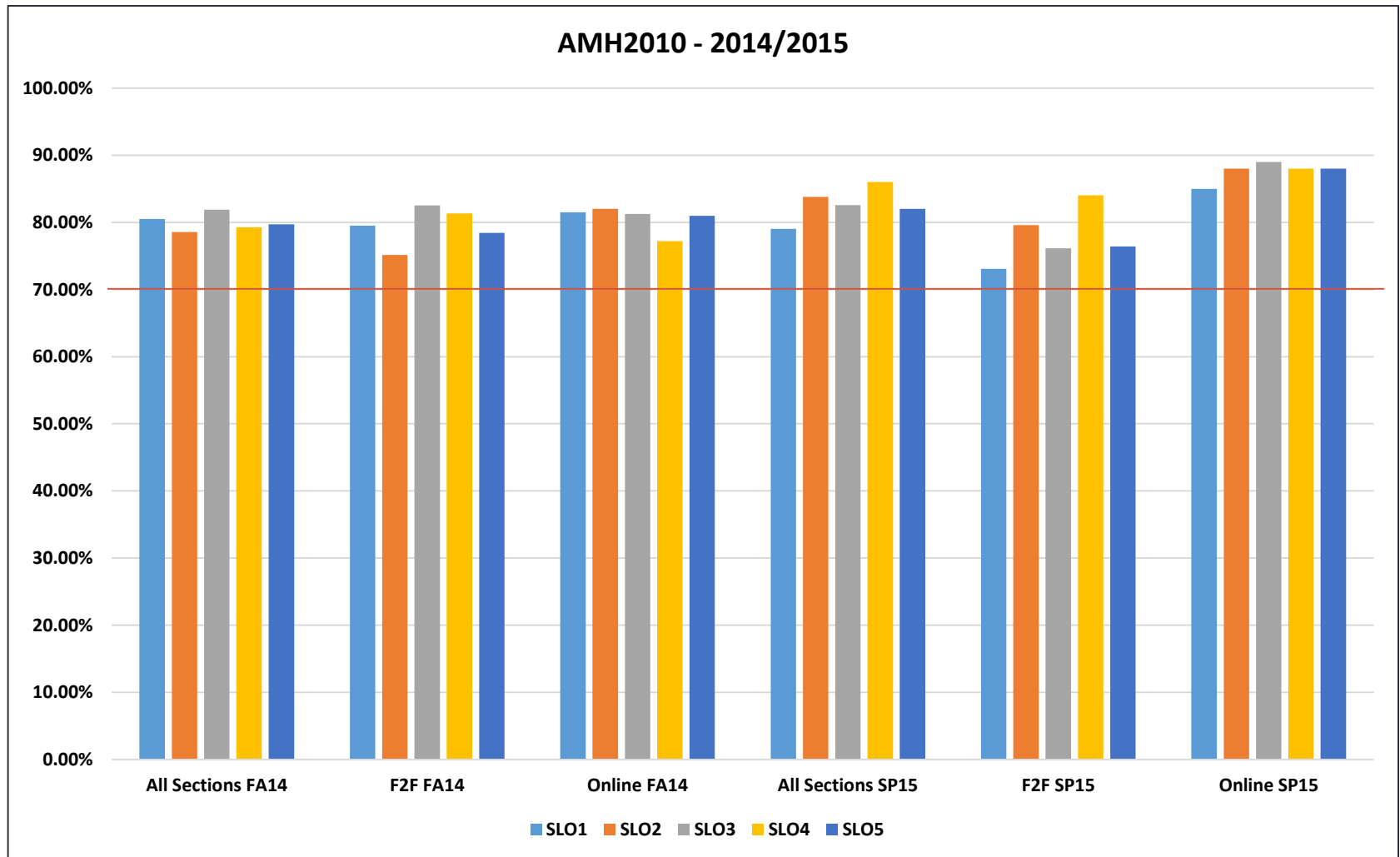
SLO 2: Demonstrate a general knowledge and understanding of the evolution of the United States as a World Power through the 20th century. (1, 3)

SLO 3: Demonstrate a general knowledge and understanding of the transformative growth of the American economic system. (1, 3)

SLO 4: Demonstrate a general knowledge and understanding of the evolution of American society from 1865 to the present. (1, 3)

SLO 5: Demonstrate a general knowledge and understanding of American society since 1865. (1, 3)

# AMH2010 - Course Assessment Results 2014/2015



# AMH2020 - Course Learning Outcomes 2014/2015

SLO 1: Demonstrate a general knowledge and understanding of the evolution of the American political system since 1865. (1,3)

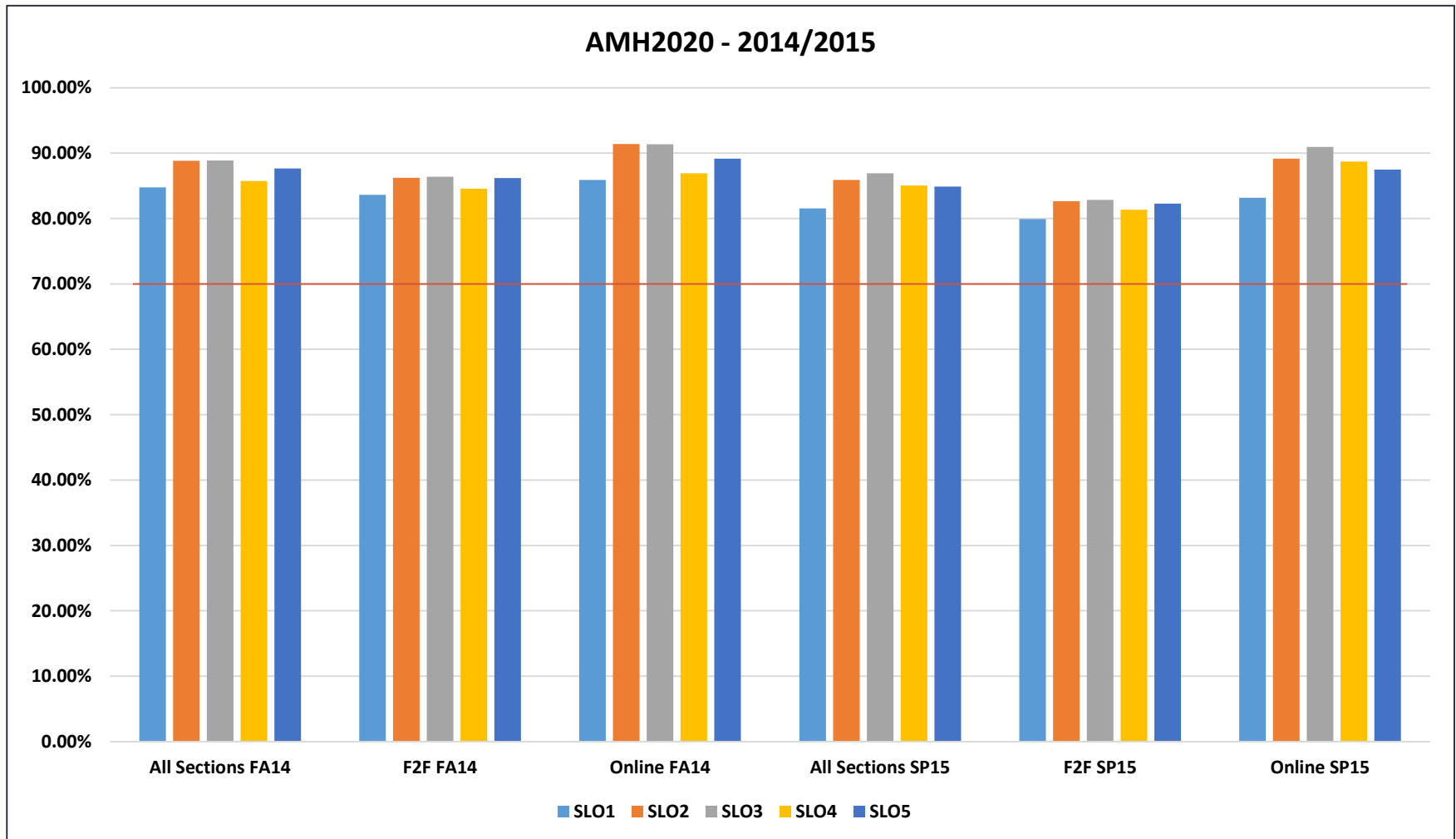
SLO 2: Demonstrate a general knowledge and understanding of the evolution of the United States as a World Power through the 20th century. (1,3)

SLO 3: Demonstrate a general knowledge and understanding of the transformative growth of the American economic system. (1,3)

SLO 4: Demonstrate a general knowledge and understanding of the evolution of American society from 1865 to the present. (1,3)

SLO 5: Demonstrate a general knowledge and understanding of American society since 1865. (1,3)

# AMH2020 - Course Assessment Results 2014/2015



# AMH2057 - Course Learning Outcomes 2014/2015

SLO 1: Demonstrate a general knowledge and understanding of the political, societal, and sectional differences between the North and the South that led to the Civil War. (1,3)

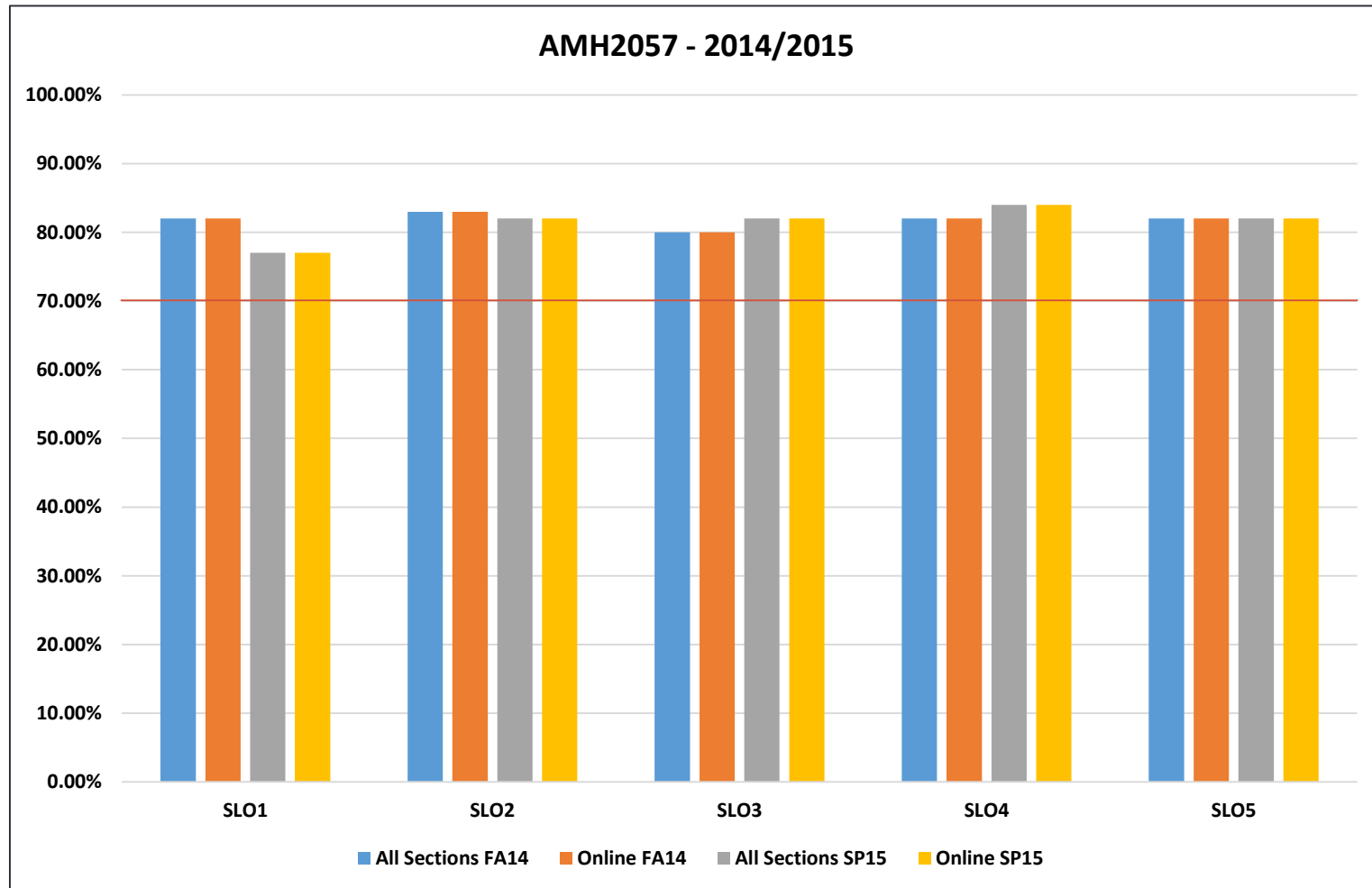
SLO 2: Examine the major events and battles related to the American Civil War. (1,3)

SLO 3: Demonstrate a general knowledge and understanding of the major figures (political and military) involved in the Civil War. (1,3)

SLO 4: Identify the major factors that led to union victory in the Civil War. (1,3)

SLO 5: Discuss the political, racial and societal issues facing the nation during Reconstruction. (1,3)

# AMH2057 - Course Assessment Results 2014/2015



# AMH2058 - Course Learning Outcomes 2014/2015

SLO 1: Demonstrate a general knowledge and understanding of the history of this conflict from September 1, 1939 to September 2, 1945. (1,3)

SLO 2: Summarize the timeline of events from the end of the First World War and the signing of the Versailles Treaty to the invasions of China and Poland. (1,3)

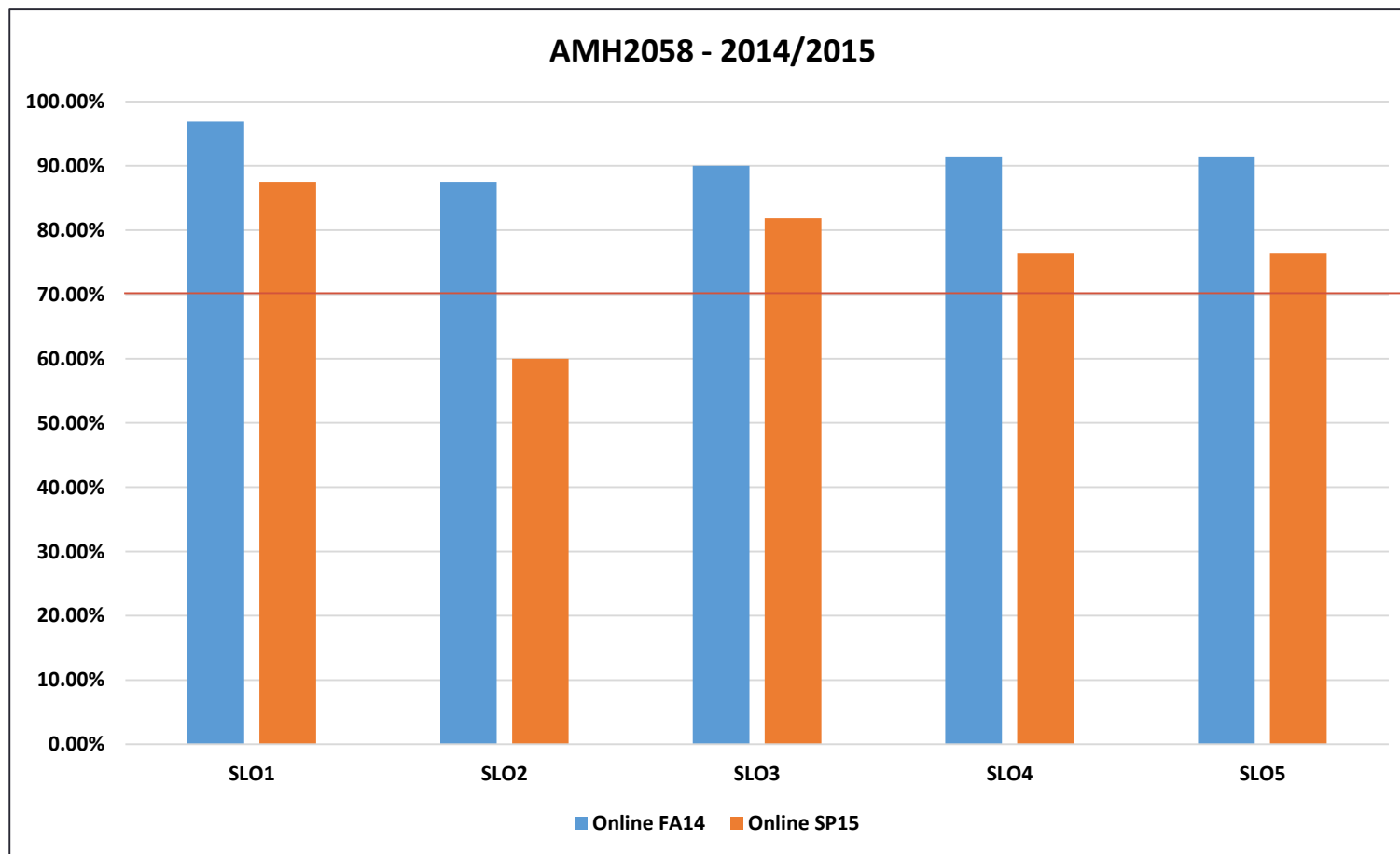
SLO 3: Describe the elements and details of the rise of Adolph Hitler, Benito Mussolini and the Japanese Nationalist Movement in the 1930's. (1,3)

SLO 4: Discuss how America became involved in a second European war. (1,3)

SLO 5: Demonstrate a general knowledge and understanding of America's prosecution of the war, and its eventual outcome. (1,3)



# AMH2058 - Course Assessment Results 2014/2015



# AMH2059 - Course Learning Outcomes 2014/2015

SLO 1: Demonstrate a working knowledge of the history of conflict in Vietnam and Southeast Asia. (1,2,3,4)

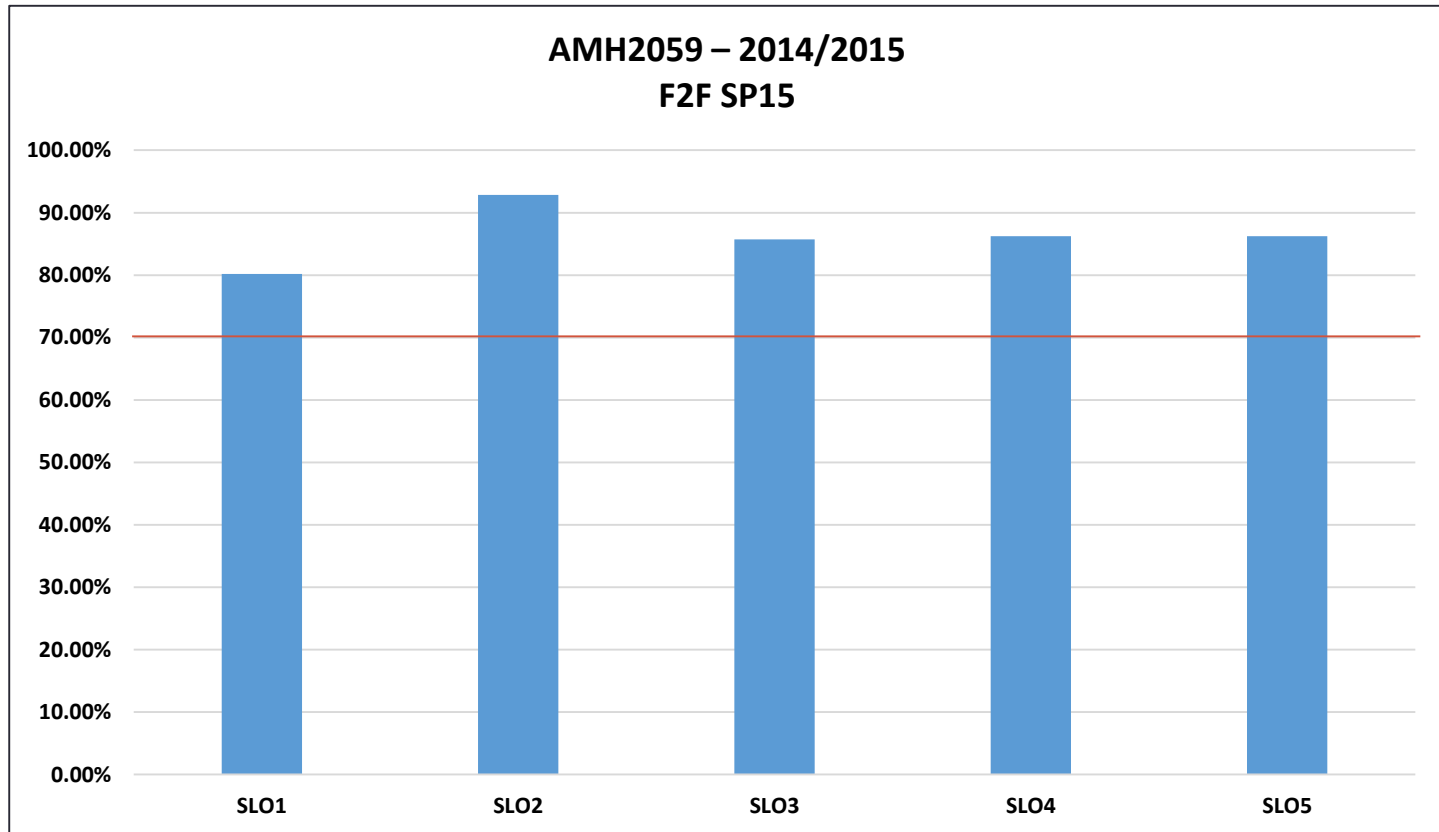
SLO 2: Demonstrate a working knowledge of the timeline of events from the colonization of Vietnam by France, to present day. (1,2,3,4)

SLO 3: Demonstrate a working knowledge of the rise to power of Ho Chi Minh and the Communist movement in Vietnam. (1,2,3,4)

SLO 4: Demonstrate a working knowledge of the “Americanization” of the Vietnam War. (1,2,3,4)

SLO 5: Demonstrate a working knowledge of the prosecution of the war in Vietnam by the U.S. and its eventual outcome. (1,2,3,4)

# AMH2059 - Course Assessment Results 2014/2015



# AMH2091 - Course Learning Outcomes 2014/2015

SLO 1: Demonstrate a general knowledge and understanding of the cultural attributes of the ancient West African empires and coastal states, the impact of European contact, and the subsequent transatlantic slave trade. (1,3)

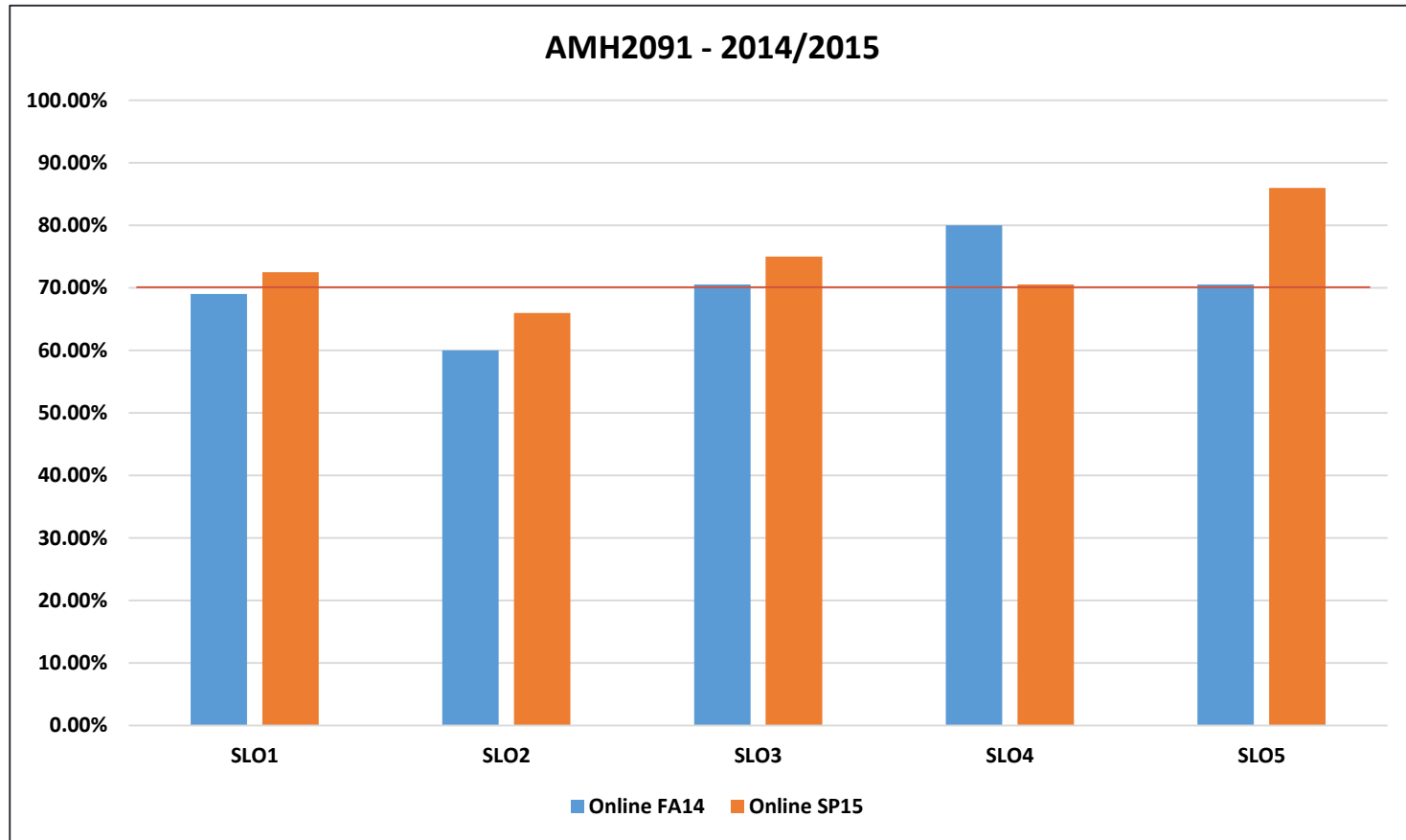
SLO 2: Demonstrate a general knowledge and understanding of the impact of African Americans on American Society as a whole, and the impact of American society on African Americans, from the colonial era to the present. (1,3)

SLO 3: Demonstrate a general knowledge and understanding of African American contributions to the development of the United States, from the colonial era to the present. (1,3)

SLO 4: Demonstrate a general knowledge and understanding of the contributions of African American personages and organizations from the colonial era to the present. (1,3)

SLO 5: Demonstrate a general knowledge and understanding of the struggle of African Americans for freedom and equality from the colonial era to the present. (1,3)

# AMH2091 - Course Assessment Results 2014/2015



# CPO2001 - Course Learning Outcomes 2014/2015

SLO 1: Demonstrate a general knowledge and understanding of factors that have shaped political behavior.

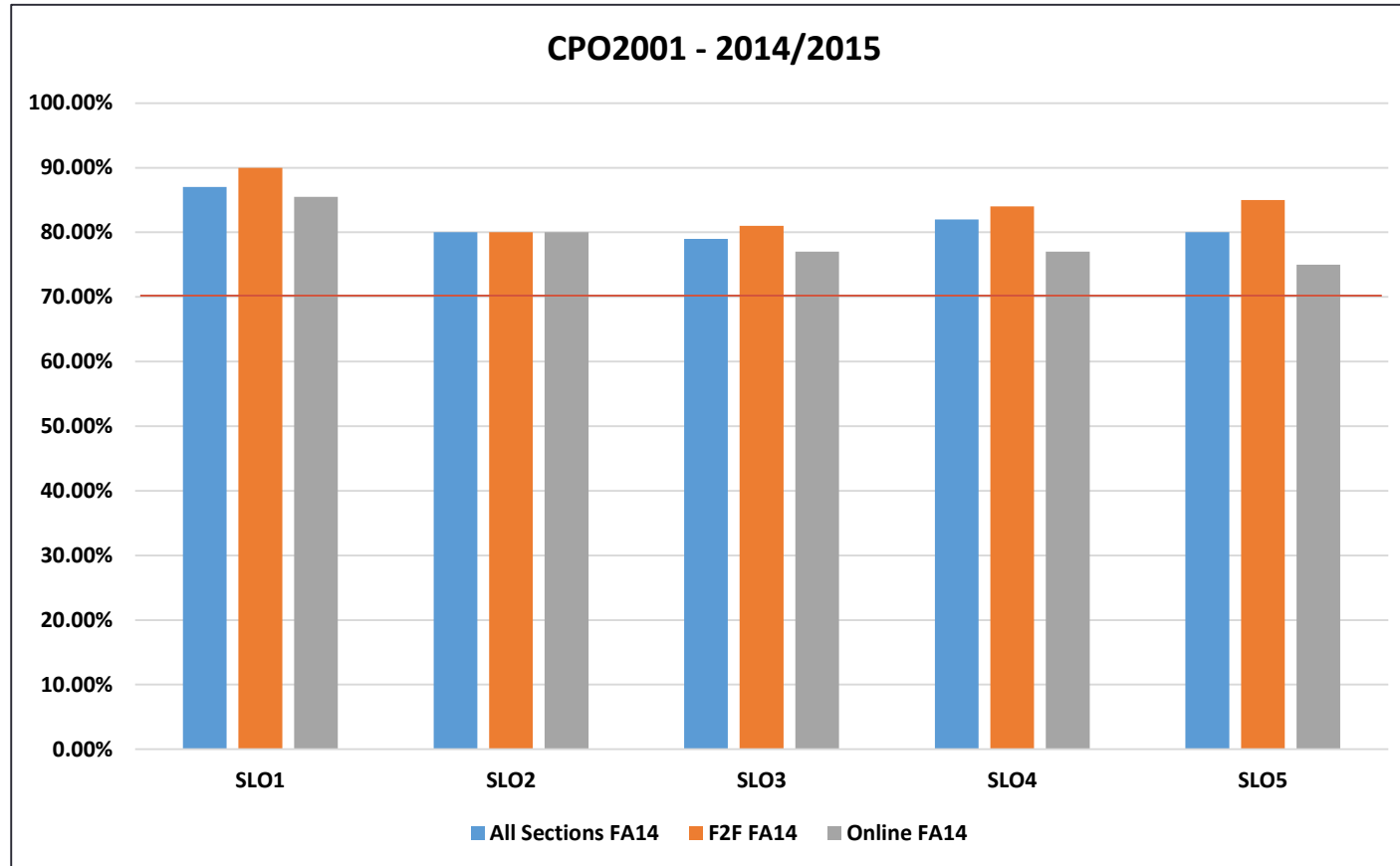
SLO 2: Demonstrate a general knowledge and understanding of the economic factors that have shaped political behavior.

SLO 3: Demonstrate a general knowledge and understanding of the ideological factors that have shaped political behavior.

SLO 4: Demonstrate a general knowledge and understanding of the ways in which rulers are chosen and the manner in which individual citizens participate in politics.

SLO 5: Demonstrate a general knowledge and understanding of the ways major political institutions exercise power and the restraints upon them.

# CPO2001 - Course Assessment Results 2014/2015



# DEP2004 - Course Learning Outcomes 2014/2015

SLO 1: Demonstrate a general knowledge and understanding of the major theoretical perspectives and history in Human Development. (1)

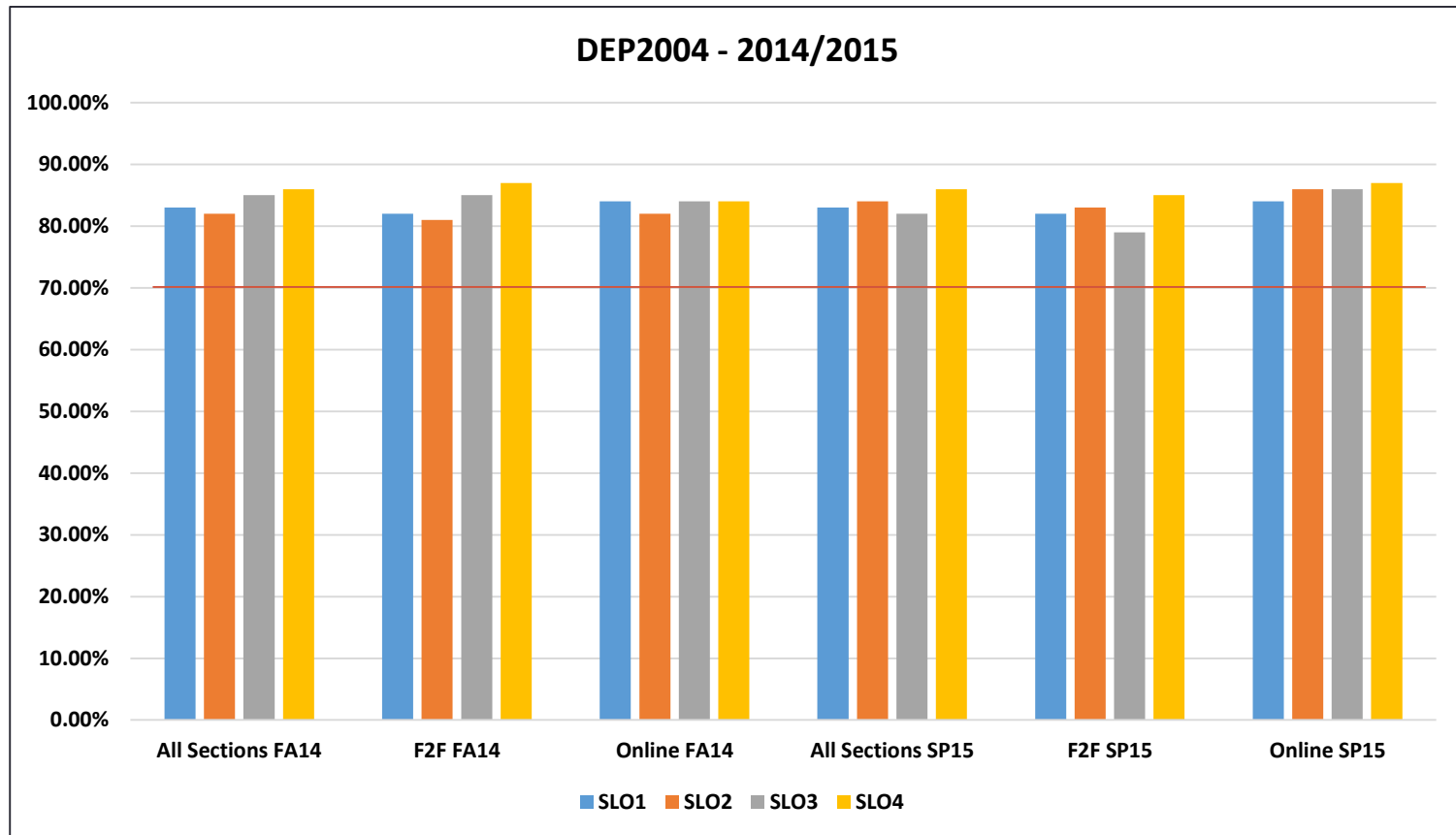
SLO 2: Demonstrate a general knowledge and understanding of the authorities and their contributions in the field of Developmental Psychology. (1)

SLO 3: Demonstrate a general knowledge and understanding of heredity, environment and maturation throughout the life span. (1,3)

SLO 4: Demonstrate a general knowledge and understanding of Fertilization, Prenatal Development, Birth, Infancy, Toddlerhood, Early Childhood, Adolescence, Early Adulthood, Mid-Life, Late Adulthood and Death. (1,3)



# DEP2004 - Course Assessment Results 2014/2015



# GEO2000 - Course Learning Outcomes 2014/2015

SLO 1: Demonstrate a general knowledge and understanding of the locations and characteristics of the world's major geographic locations and features. (1,3)

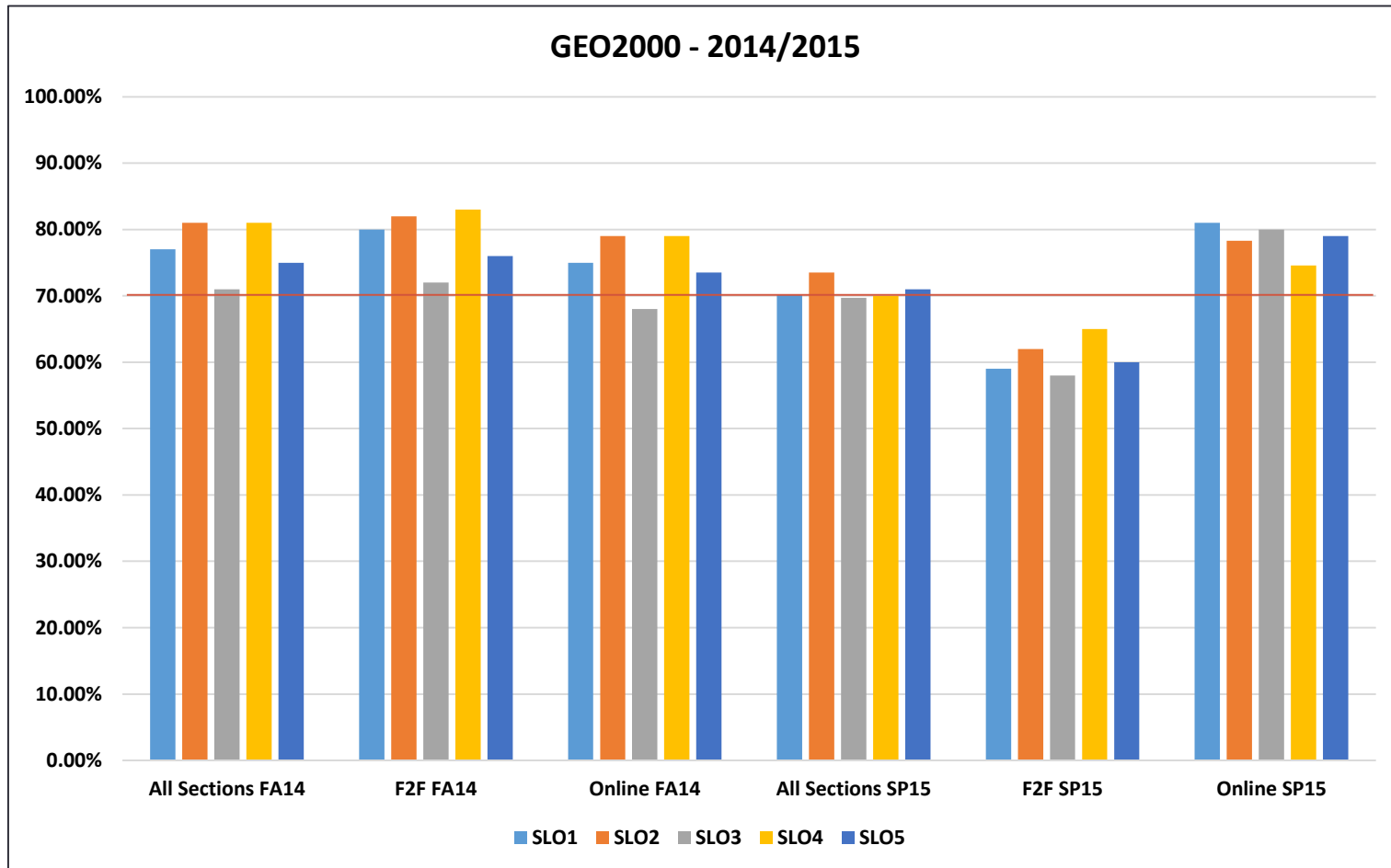
SLO 2: Demonstrate a general knowledge and understanding of the spatial context of historical and contemporary issues. (1,3)

SLO 3: Demonstrate a general knowledge and understanding of the economic characteristic of the earth's major regions and their interrelationships. (1,3)

SLO 4: Demonstrate a general knowledge and understanding of the location of the earth's population distribution. (1,3)

SLO5: Demonstrate a general knowledge and understanding of the physical characteristics of the world's major regions. (1,3)

# GEO2000 - Course Assessment Results 2014/2015



# GEO2420 - Course Learning Outcomes 2014/2015

SLO 1: Demonstrate a general knowledge and understanding of the economic characteristics and natural resource use in societies around the world. (1,3)

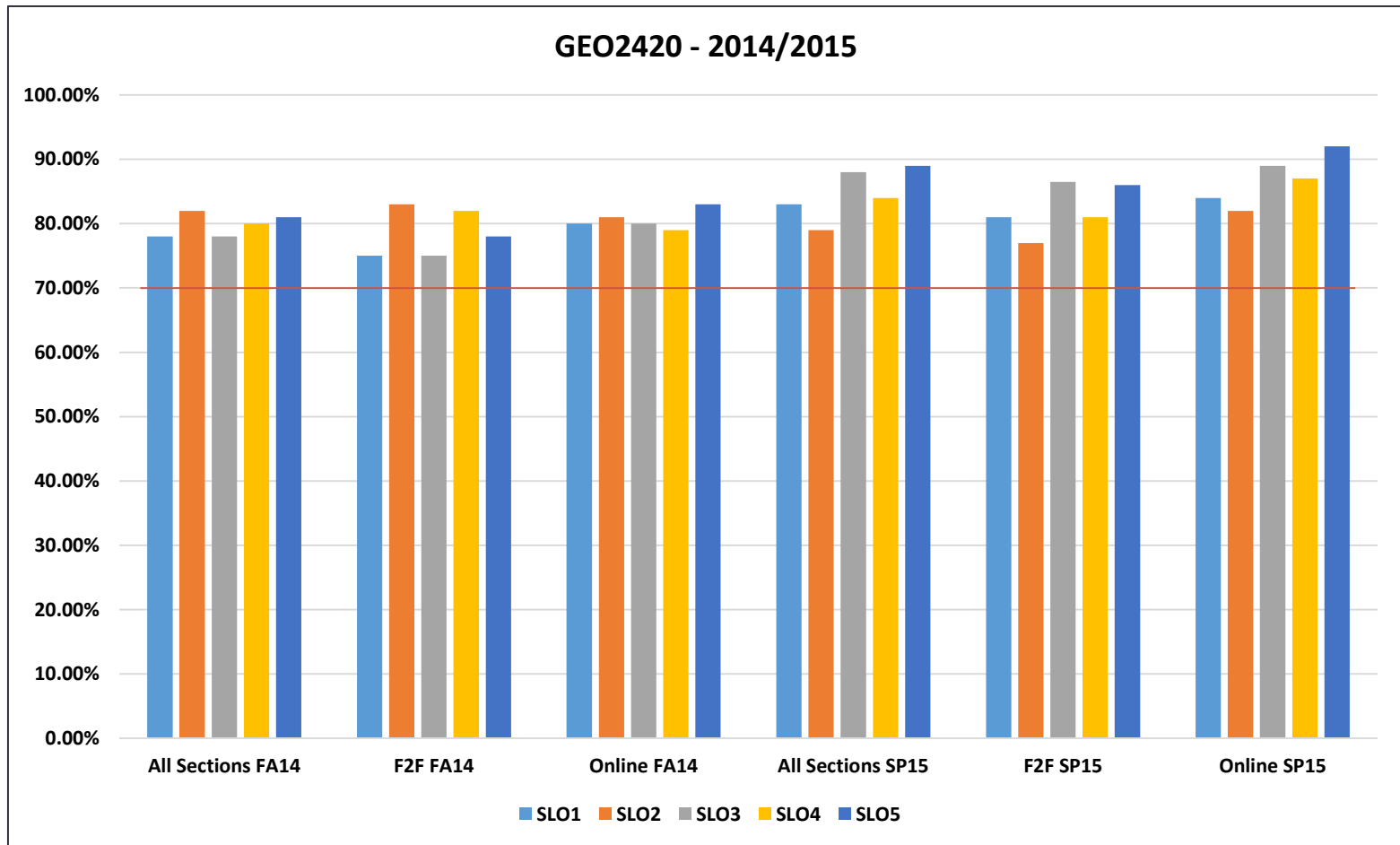
SLO 2: Demonstrate a general knowledge and understanding of agricultural and food systems of countries around the world. (1,3)

SLO 3: Demonstrate a general knowledge and understanding of the factors of population distribution around the world. (1,3)

SLO 4: Demonstrate a general knowledge and understanding of the cultural characteristics of the world's major regions, including language, religion, folk and popular culture, ethnicity and political. (1,3)

SLO5: Demonstrate a general knowledge and understanding of the patterns of human migration around the world. (1,3)

# GEO2420 - Course Assessment Results 2014/2015



# INP1390 - Course Learning Outcomes 2014/2015

SLO 1: Demonstrate a general knowledge and understanding of the various motives for working. (1)

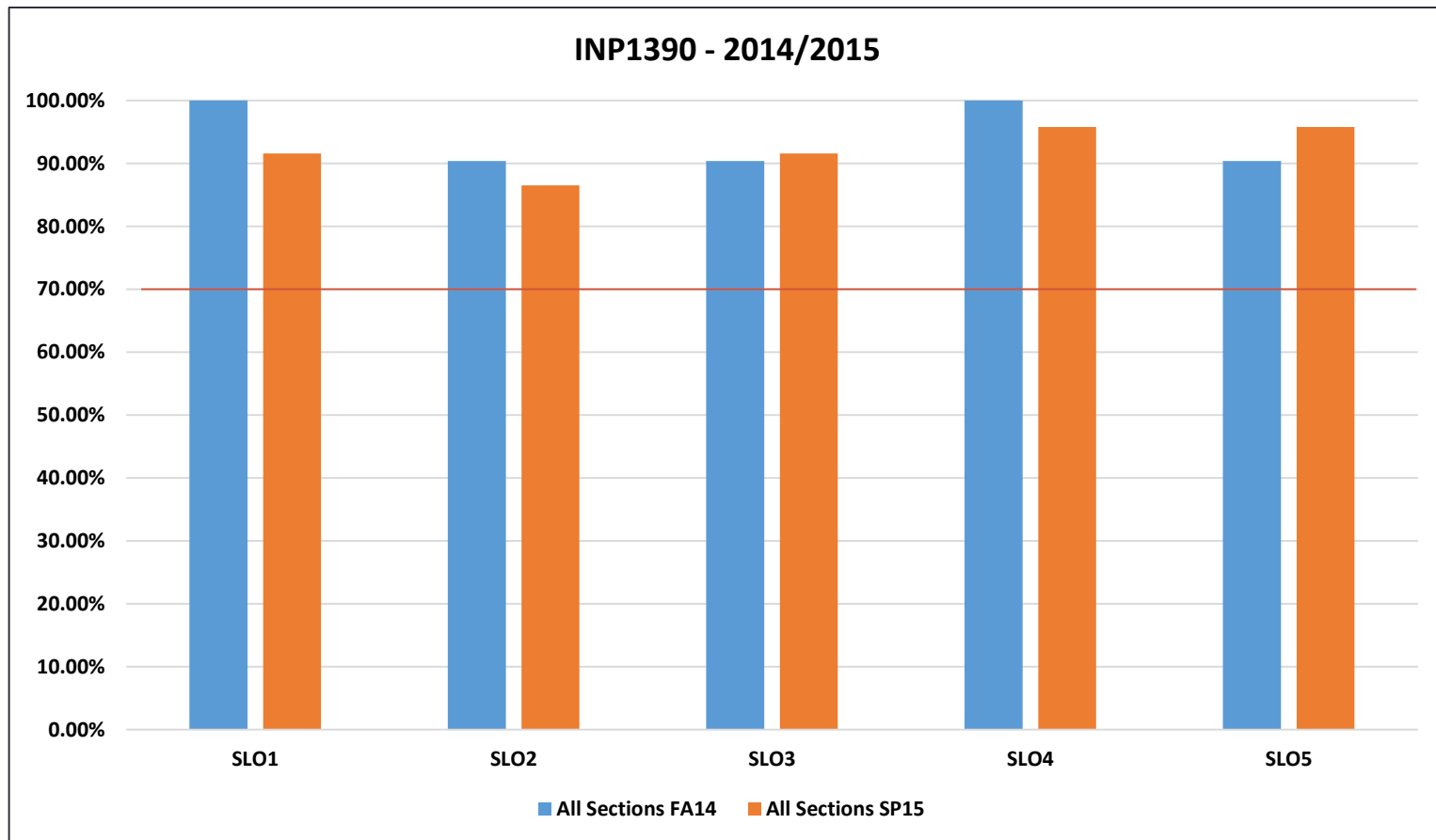
SLO 2: Demonstrate a general knowledge and understanding of effective goal-setting associated with long-term goals. (1)

SLO 3: Demonstrate a general knowledge and understanding of the importance of cooperation on the job. (1)

SLO 4: Demonstrate a general knowledge and understanding of communication and reasons why misunderstandings often occur. (1)

SLO5: Demonstrate a general knowledge and understanding of conflict resolution techniques and strategies. (1)

# INP1390 - Course Assessment Results 2014/2015



# PHI2010 - Course Learning Outcomes 2014/2015

SLO 1: Demonstrate a general knowledge and understanding of the purpose and methods of philosophy. (1, 2, 3, 4)

SLO 2: Demonstrate a general knowledge and understanding of the major disciplines within philosophy. (1, 2, 3, 4)

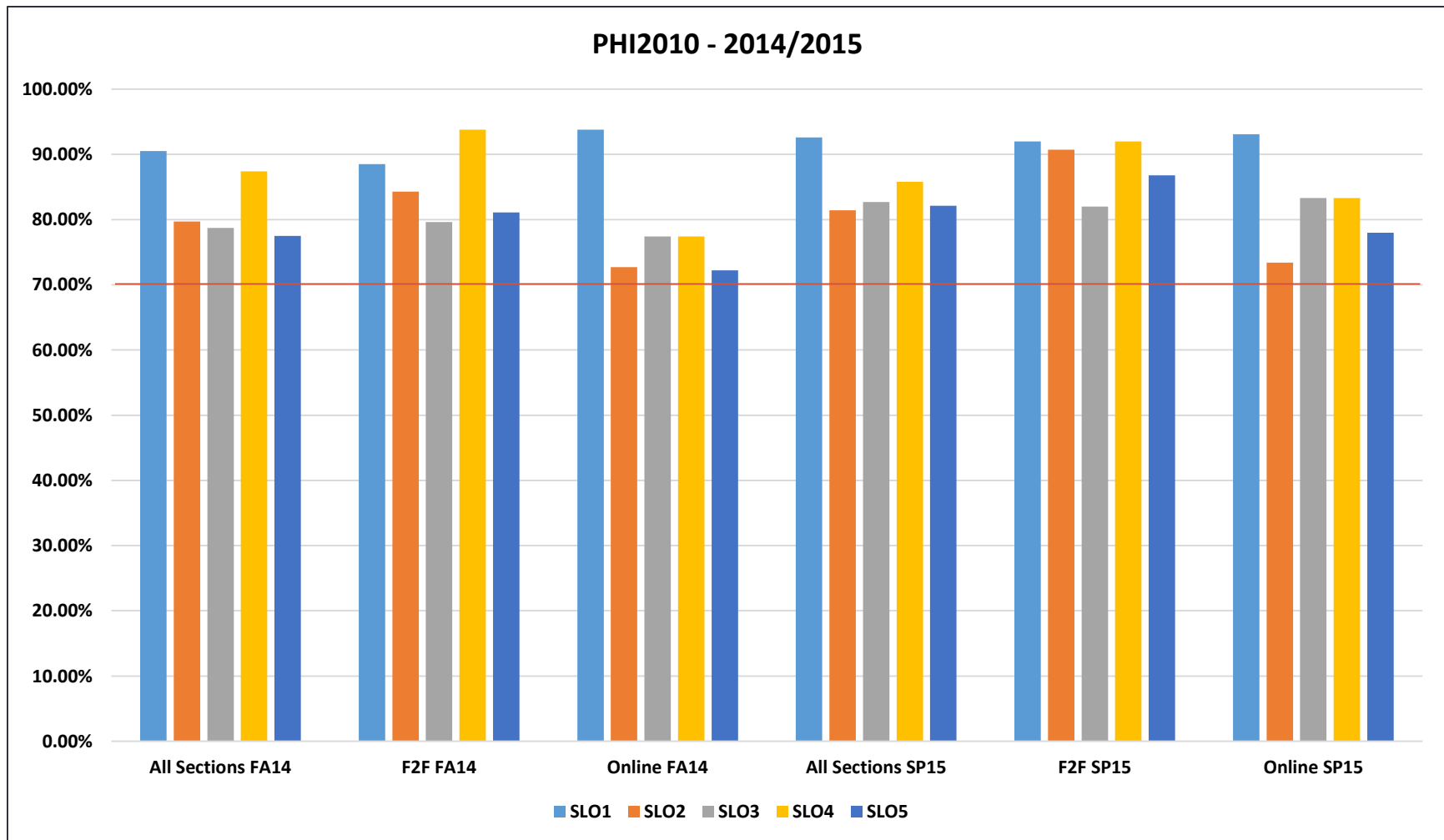
SLO 3: Demonstrate a general knowledge and understanding of the artistic and philosophical representatives of each field. (1, 2, 3, 4)

SLO 4: Demonstrate a general knowledge and understanding of the major schools of thought in ethics. (1, 2, 3, 4)

SLO 5: Demonstrate a general knowledge and understanding of the development of theories of reality and human nature from ancient to modern. (1, 2, 3, 4)



# PHI2010 - Course Assessment Results 2014/2015



# PHI2600 - Course Learning Outcomes 2014/2015

SLO 1: Demonstrate a general knowledge and understanding of the basic theories of ethics. (1, 2, 3, 4)

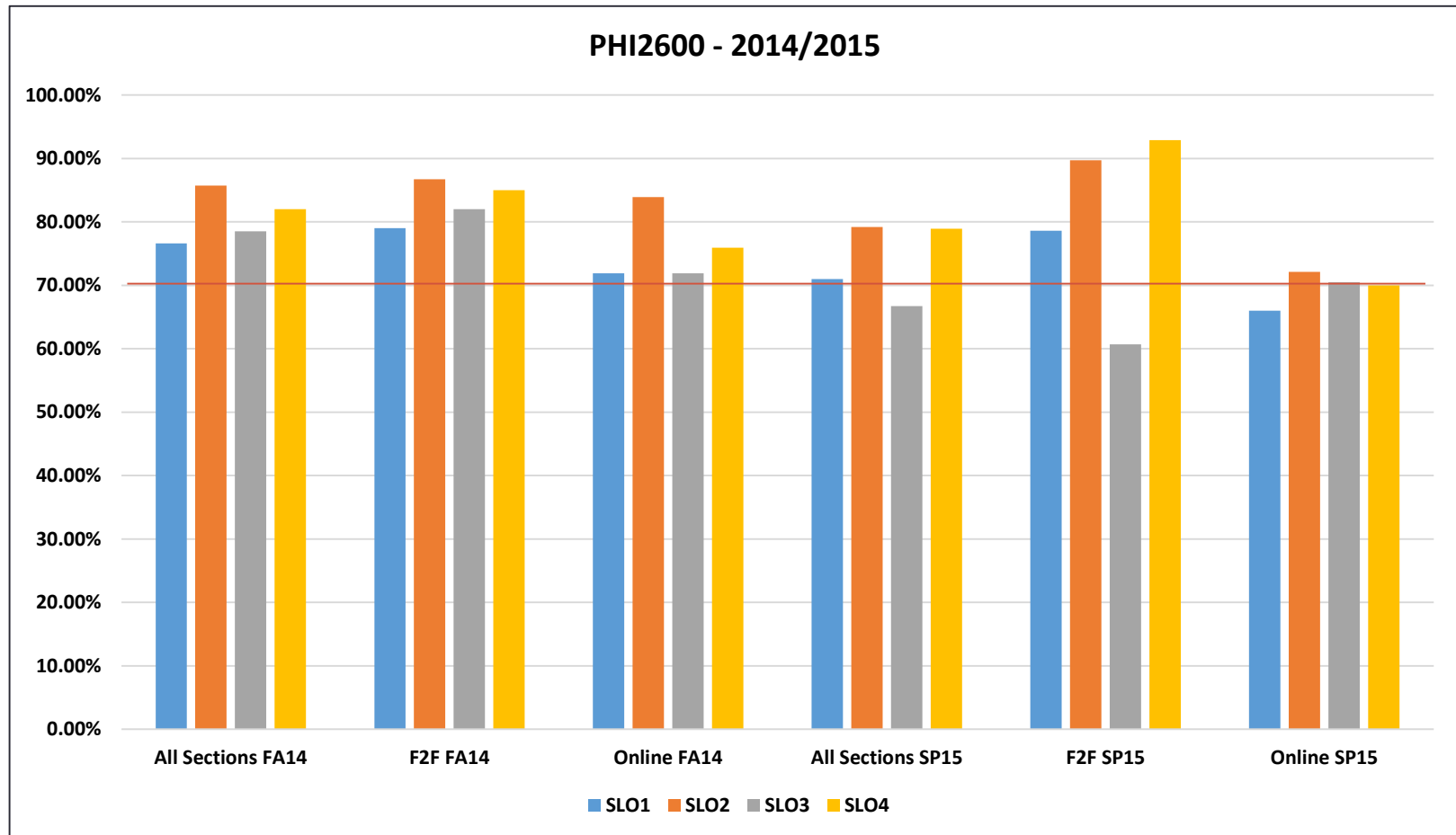
SLO 2: Demonstrate a general knowledge and understanding of the ideas of key philosophers whose works encompass contemporary ethical dilemmas. (1, 2, 3, 4)

SLO 3: Demonstrate a general knowledge and understanding of the role of ethics within the larger field of philosophy. (1, 2, 3, 4)

SLO 4: Demonstrate a general knowledge and understanding of the relevance of ethics and value theory to one's chosen major. (1, 2, 3, 4)

SLO 5: Demonstrate a general knowledge and understanding of the development of theories of reality and human nature from ancient to modern. (1, 2, 3, 4)

# PHI2600 - Course Assessment Results 2014/2015



# POS2001 - Course Learning Outcomes 2014/2015

SLO 1: Demonstrate a an understanding of the history and methodology of studying politics.

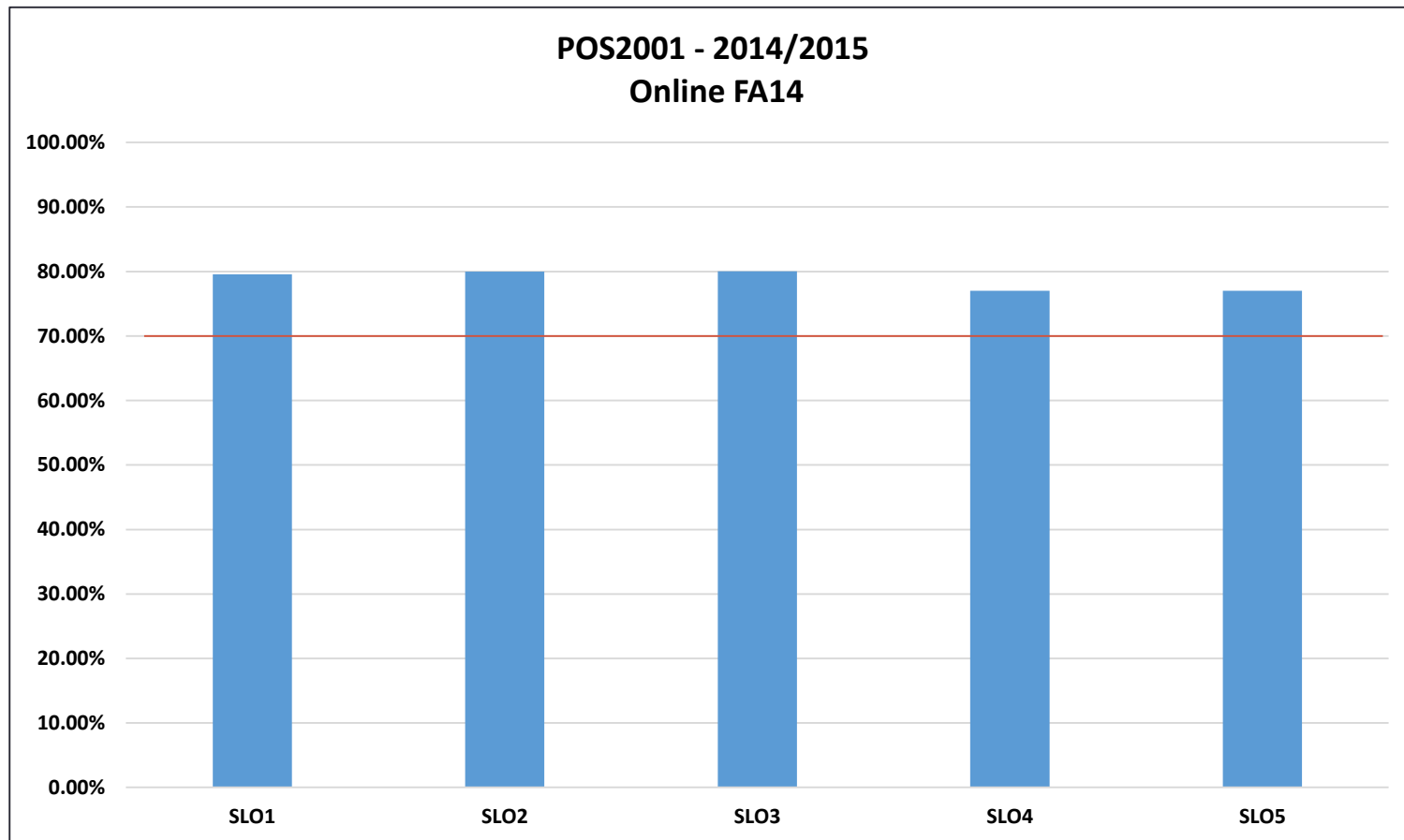
SLO 2: Demonstrate a general knowledge of the basic structure of the discipline of political science.

SLO 3: Demonstrate a general knowledge of American Politics.

SLO 4: Demonstrate a general knowledge of Comparative Politics.

SLO 5: Demonstrate a general knowledge of International Relations.

# POS2001 - Course Assessment Results 2014/2015



# POS2041 - Course Learning Outcomes 2014/2015

SLO 1: Demonstrate a general knowledge and understanding of the differences between the House of Representatives and the Senate.

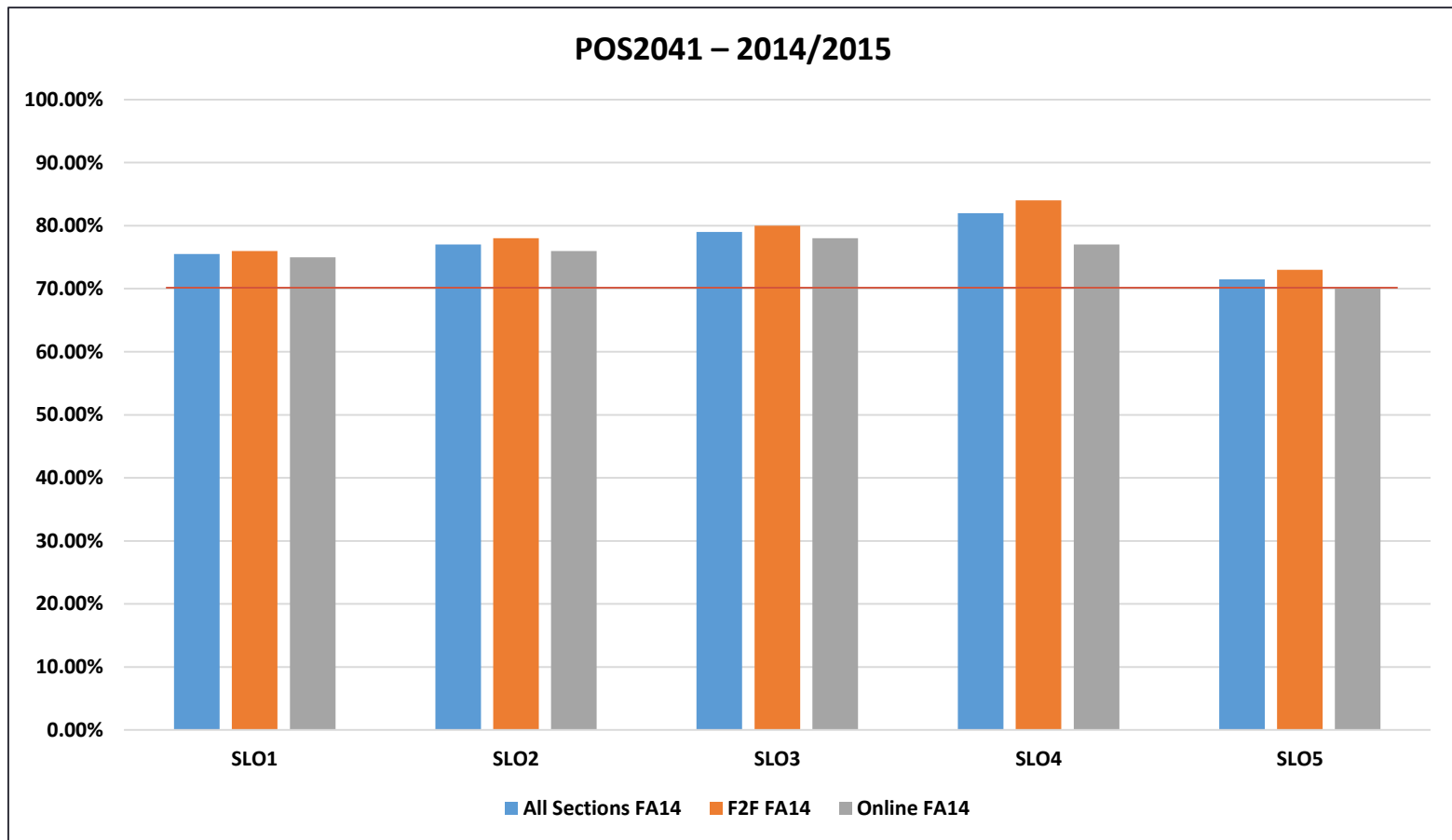
SLO 2: Demonstrate a general knowledge and understanding of how a bill becomes a law.

SLO 3: Demonstrate a general knowledge and understanding of the powers and functions of the three branches of government.

SLO 4: Demonstrate a general knowledge and understanding of how citizens can become more effective participants in the political process.

SLO 5: Demonstrate a general knowledge and understanding of the major components of the U.S. Constitution.

# POS2041 - Course Assessment Results 2014/2015



# PSY1012 - Course Learning Outcomes 2014/2015

SLO 1: Demonstrate a basic knowledge and understanding of the historical perspective of psychology and the basis of contemporary psychological research. (1)

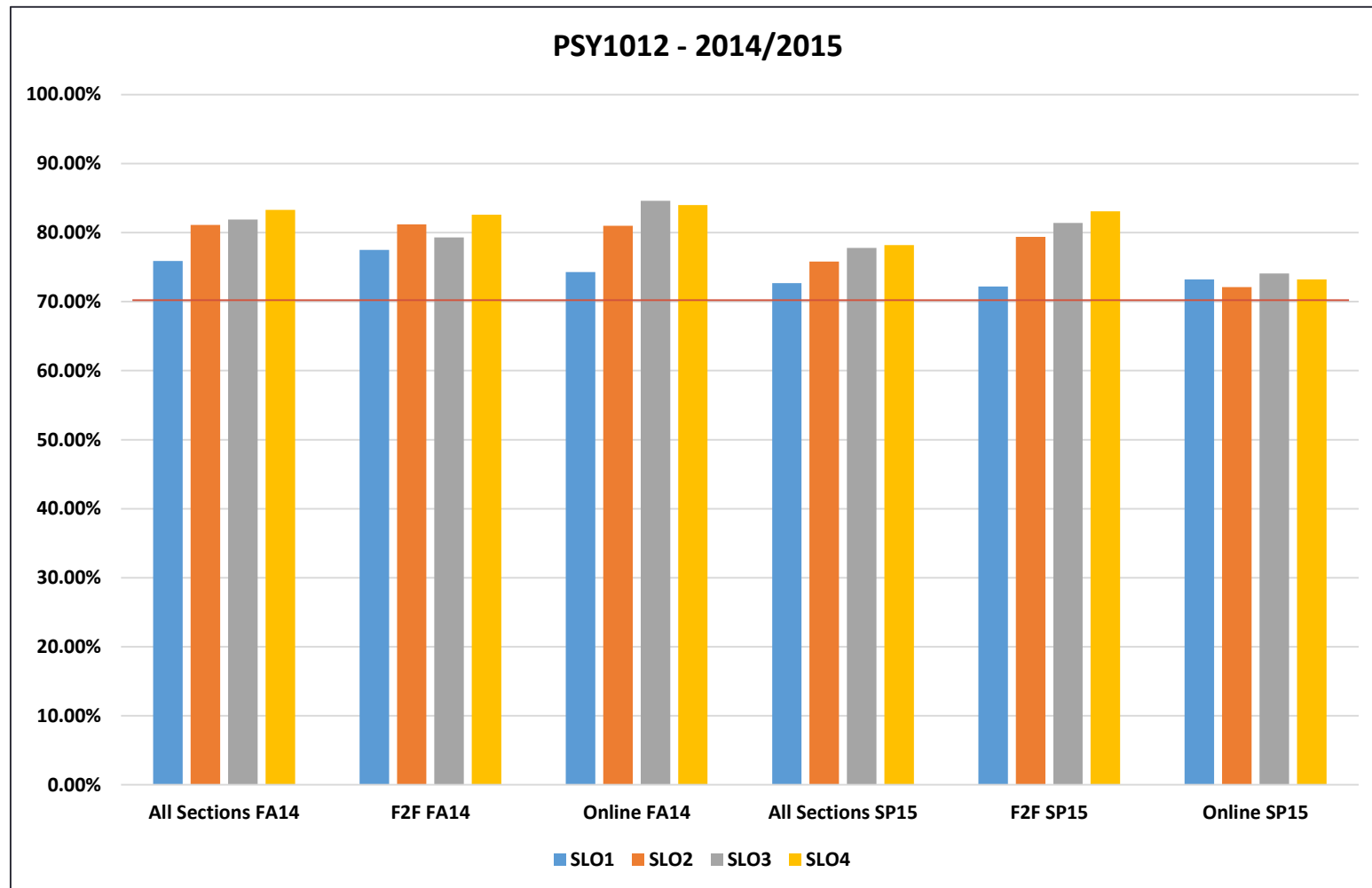
SLO 2: Demonstrate a basic knowledge and understanding of the Biological and Physiological basis of behavior. (1)

SLO 3: Demonstrate a basic knowledge and understanding of the Cognitive basis of behavior. (1,3)

SLO 4: Demonstrate a basic knowledge and understanding of the Clinical aspects of the science of Psychology. (1)



# PSY1012 - Course Assessment Results 2014/2015



# PSY2936 - Course Learning Outcomes 2014/2015

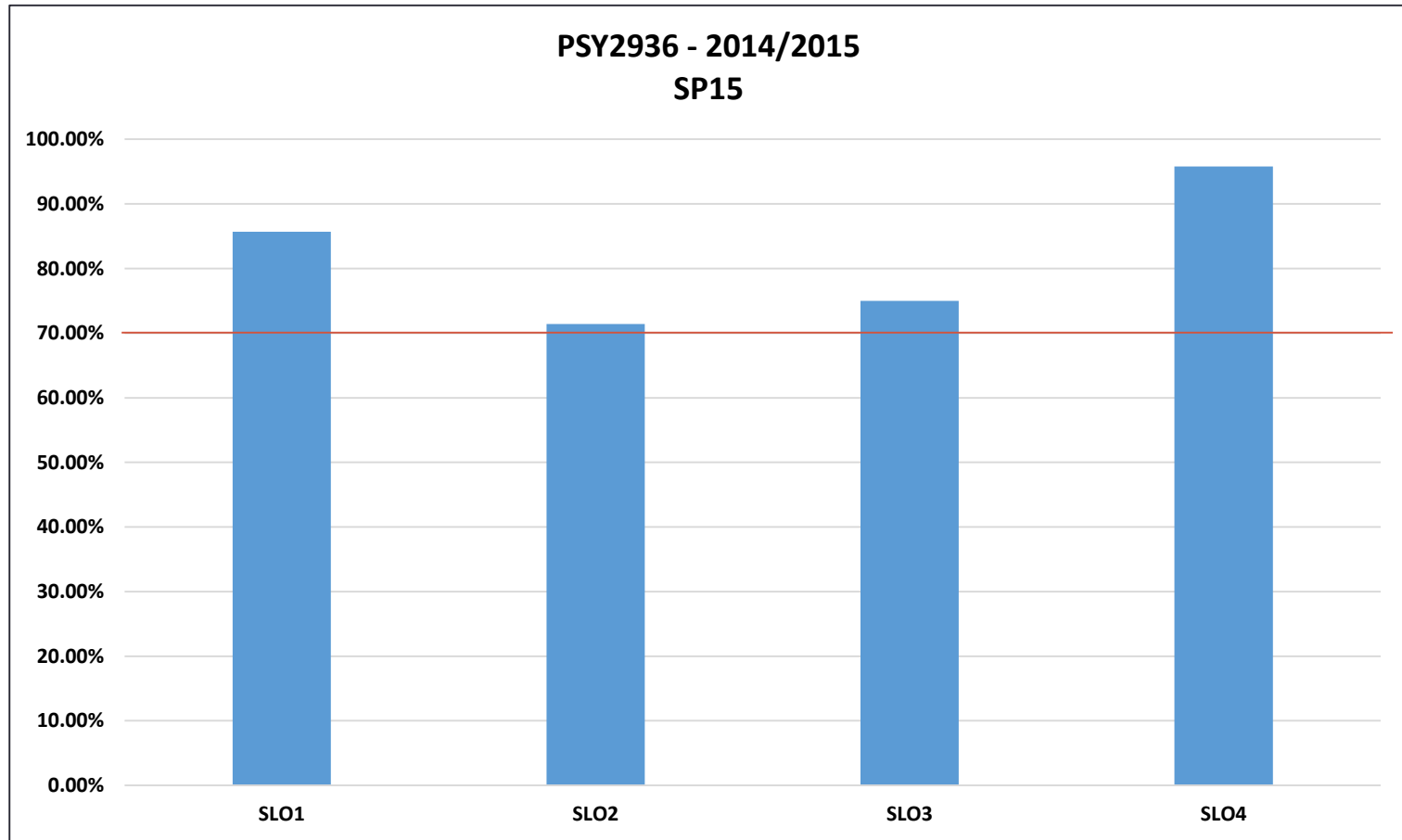
SLO 1: Understand the influence of natural selection traits and behaviors and that not all behaviors are adaptive, and explain why. (1)

SLO 2: Understand the basics of inheritance as well as their interaction with the environment. (1)

SLO 3: Be able to explain how neural and hormonal interactions control behavior in an organism. (1,3)

SLO 4: Be able to explain how the brain and nervous system communicate with each other and the body to create behavior. (1)

# PSY2936 - Course Assessment Results 2014/2015



# SOP2002 - Course Learning Outcomes 2014/2015

SLO 1: Demonstrate a general knowledge and understanding of the major theories of social psychology and the methods used by social psychologists to study behavior. (1)

SLO 2: Demonstrate a general knowledge and understanding of the major factors which influence the formation of impressions of other people. (1)

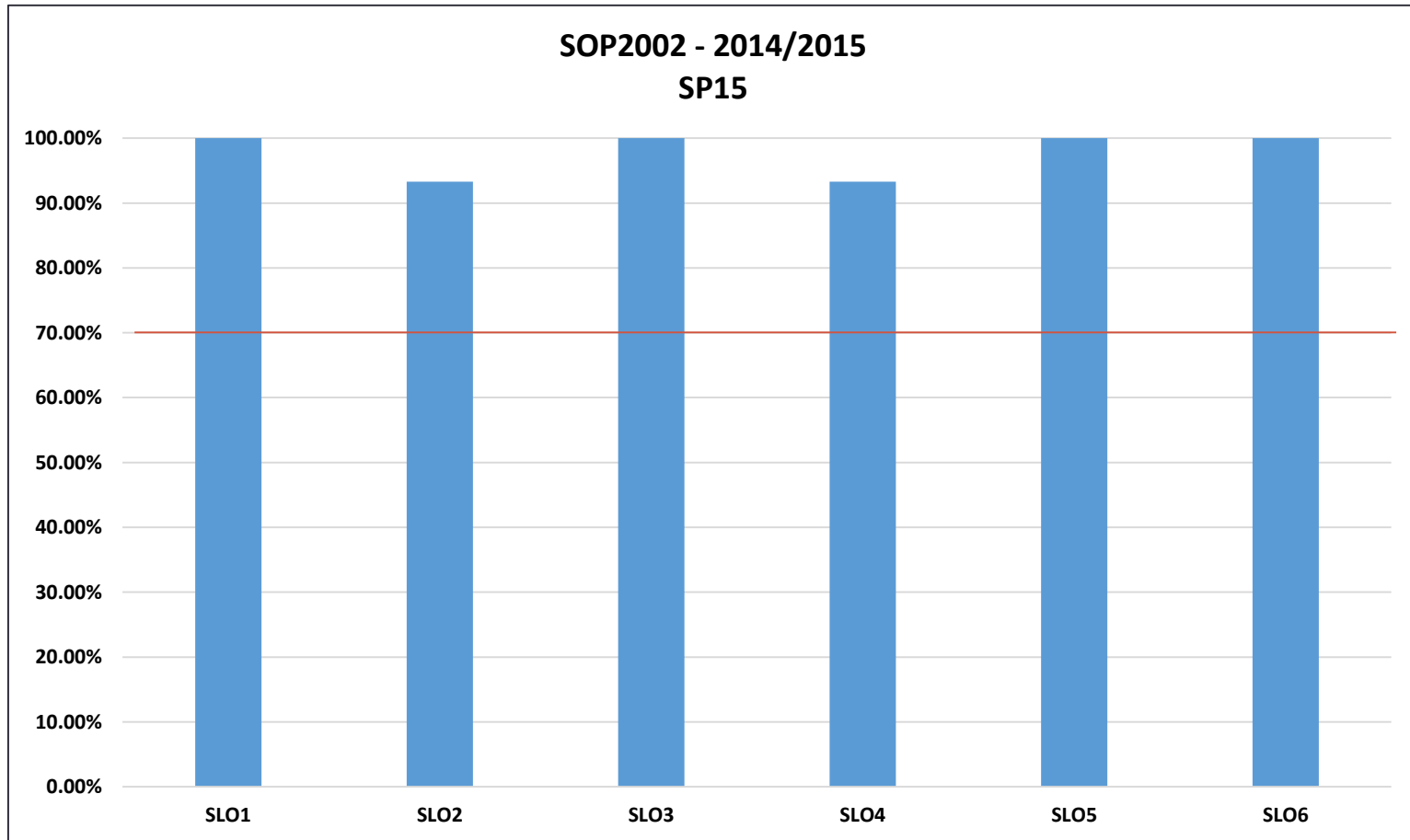
SLO 3: Describe how the cognitive dissonance theory explains the principle of cognitive consistency. (1,3)

SLO 4: Describe the results of major studies on obedience, conformity, and persuasion. (1)

SLO 5: Describe the factors involved in aggression, altruism, prejudice and attraction. (1)

SLO 6: Demonstrate a general knowledge and understanding of several theories which attempt to explain how gender identity is acquired. (1)

# SOP2002 - Course Assessment Results 2014/2015



## SOP2772 - Course Learning Outcomes 2014/2015

SLO 1: Demonstrate a general knowledge and understanding of the biological and physiological aspects of human sexuality, and their relationship to the psychological and sociological aspects. (1)

SLO 2: Demonstrate a general knowledge and understanding of the influence culture has on human sexuality(1, 3)

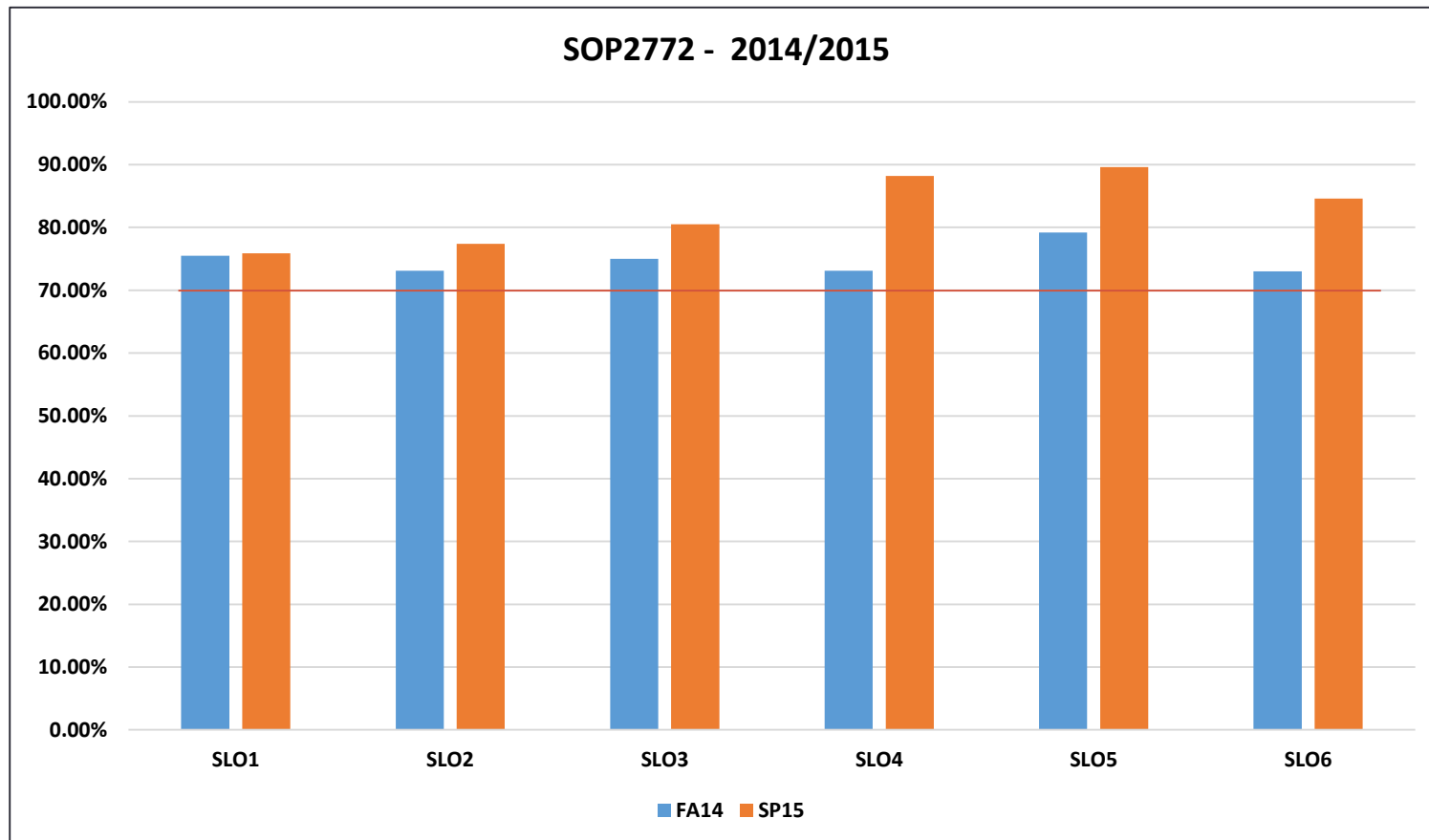
SLO 3: Demonstrate a general knowledge and understanding of the developmental perspectives of human sexuality. (1)

SLO 4: Demonstrate a general knowledge and understanding of the role of communication and perception in intimate relationships.

SLO 5: Demonstrate a general knowledge and understanding of the various sexual disorders, sexual dysfunctions, and the role of sex therapy. (1)

SLO 6: Demonstrate a general knowledge and understanding of the ethical perspectives of sexuality. (1)

# SOP2772 - Course Assessment Results 2014/2015



# SYG2000 - Course Learning Outcomes 2014/2015

SLO 1: Demonstrate a general knowledge and understanding of the process of socialization and how we become social beings. (1,2,3)

SLO 2: Demonstrate a general knowledge and understanding of the different ways in which people act, feel, think and define their situations based on their race, social class and gender. (1,2,3)

SLO 3: Demonstrate a general knowledge and understanding of the fundamental concepts of the conflict perspective. (1,2)

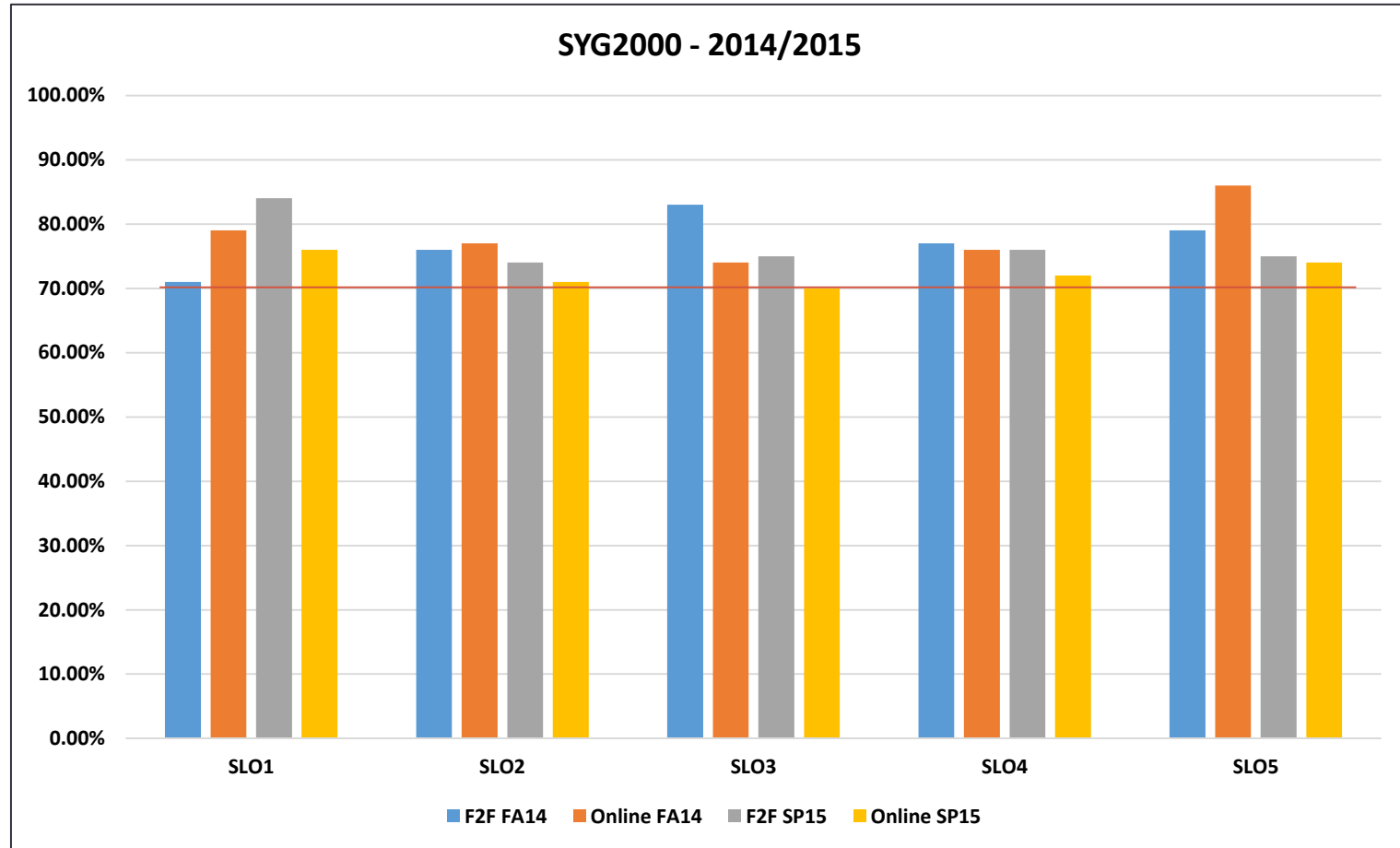
SLO 4: Demonstrate a general knowledge and understanding of the fundamental concepts of the functionalist perspective. (1,2)

SLO 5: Demonstrate a general knowledge and understanding of the fundamental concepts of the symbolic interactionist perspective. (1,2)

SLO 6: Demonstrate a general knowledge and understanding of the ethical perspectives of sexuality. (1)



# SYG2000 - Course Assessment Results 2014/2015



# WOH2012 - Course Learning Outcomes 2014/2015

SLO 1: Demonstrate a general knowledge and understanding of the basic factors of civilization and the factors that create them. (1, 3)

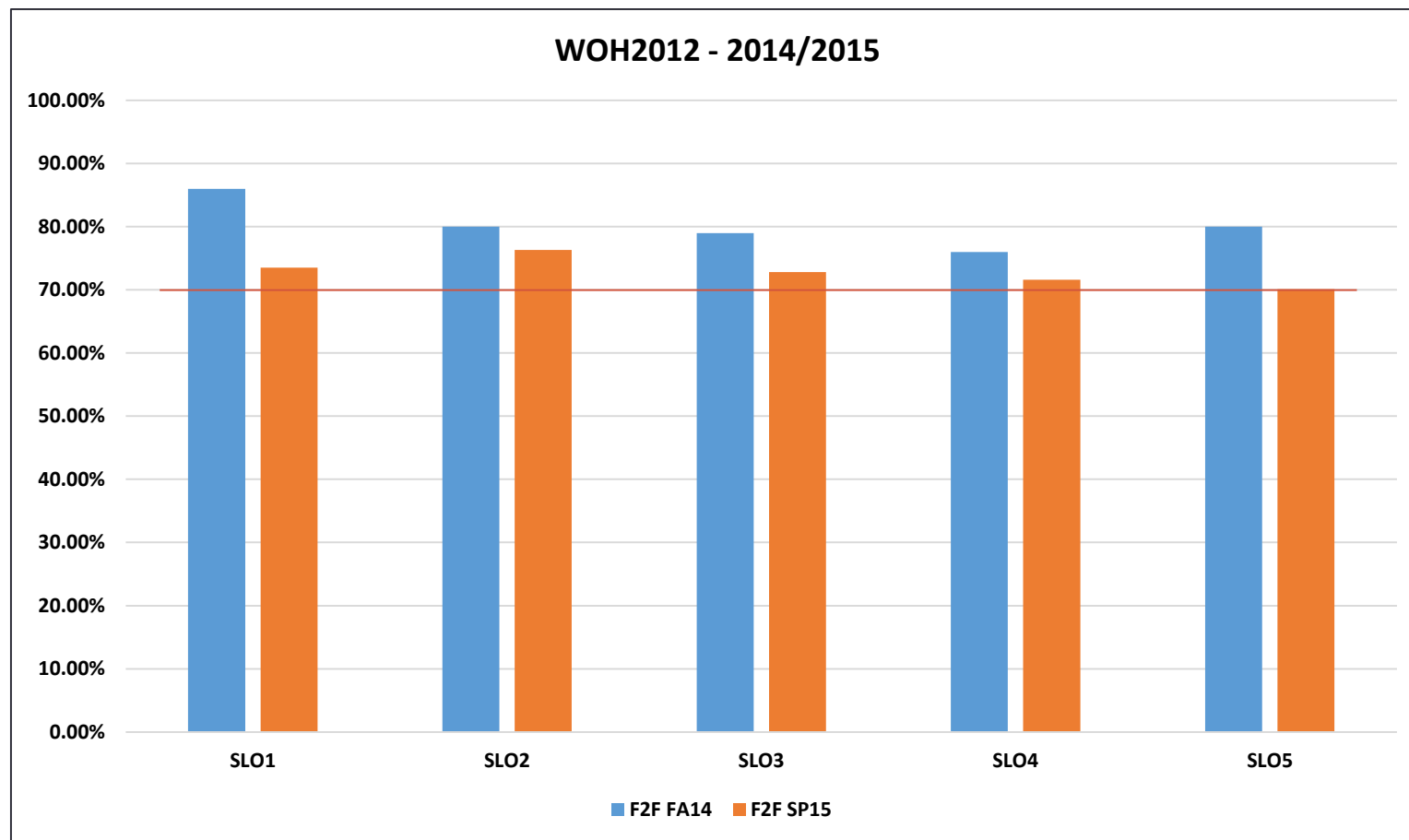
SLO 2: Demonstrate a general knowledge and understanding of the role of trade, religion, communication, conflict, and the immigrations of peoples on the rise and fall of civilizations. (1,3)

SLO 3: Demonstrate a general knowledge and understanding of the importance of religion, politics, economics, and ideas in the creation of cultural change and global exchange. (1,3)

SLO 4: Demonstrate a general knowledge and understanding of cultural contact and exchange on the course of history. (1,3)

SLO 5: Demonstrate a general knowledge and understanding of demographic and environmental change on world history to the modern era. (1,3)

# WOH2012 - Course Assessment Results 2014/2015



# WOH2022 - Course Learning Outcomes 2014/2015

SLO 1: Demonstrate a general knowledge and understanding of World History by recounting, the nature of European Colonization and the impact which colonization and imperialism had on the non-western world. (1,3)

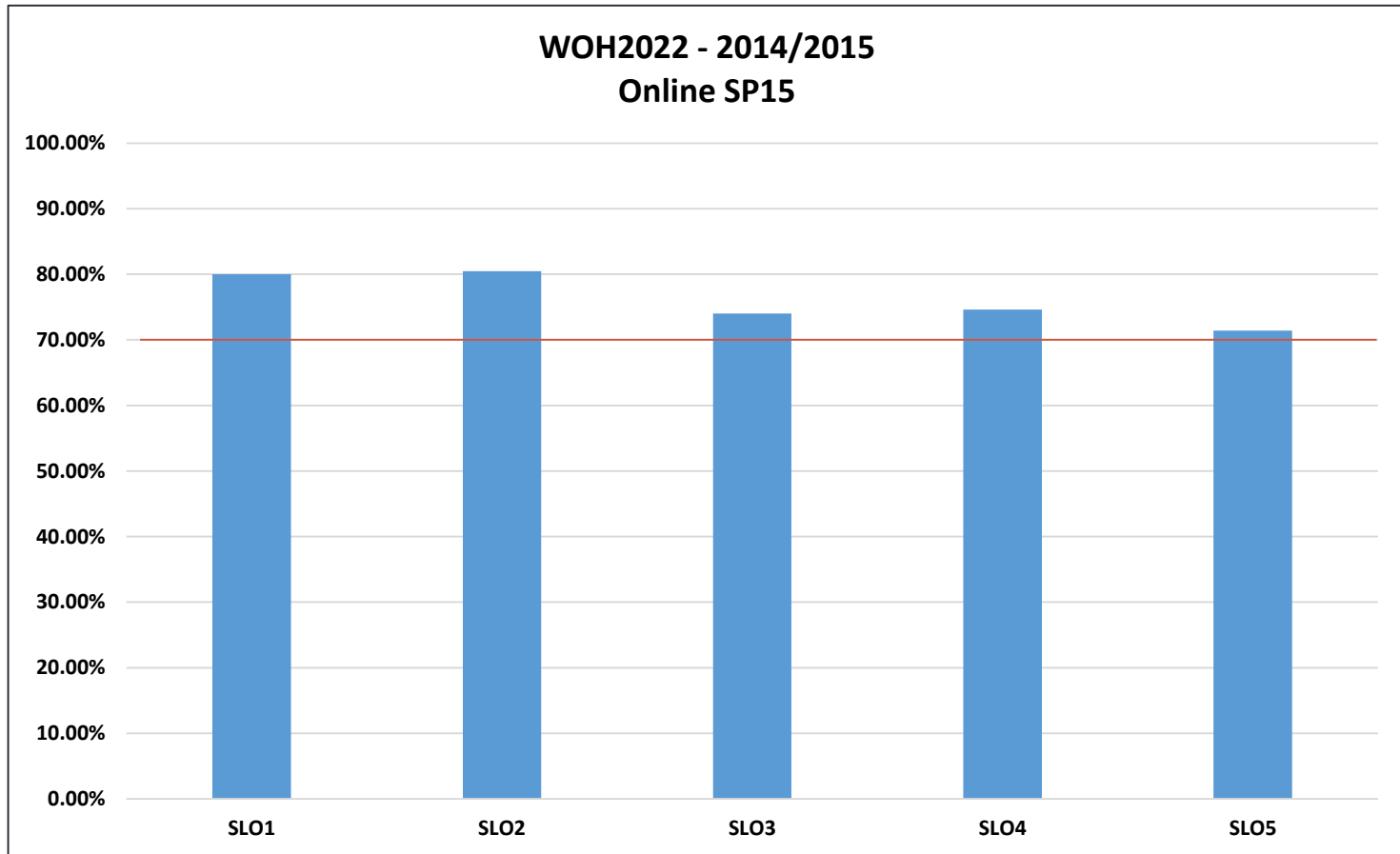
SLO 2: Demonstrate a general knowledge and understanding of World History by comprehending the nature of revolutions and their impact both on that nation and surrounding regions. (1,3)

SLO 3: Demonstrate a general knowledge and understanding of World History by identifying the origins and effects of cultural movements throughout the modern centuries. (1,3)

SLO 4: Demonstrate a general knowledge and understanding of World History by analyzing the nature of the two world wars; critiquing how the effects of the first war sparked the beginnings of the second and how the end of the second produced the political atmosphere for the Cold War. (1,3)

SLO 5: Demonstrate a general knowledge and understanding of World History by evaluating the growth of the non-western world and their place in modern international affairs; considering the sometimes contrasting viewpoints of western versus nonwestern nations. (1,3)

# WOH2022 - Course Assessment Results 2014/2015



## Assessment Data 2013-2014 and 2014-2015: Programs and Institutional Learning Outcomes

Program	Critical/ Creative Thinking		Communication		Cultural Literacy		Information and Technical Literacy	
	2013/14	2014/15	2013/14	2014/15	2013/14	2014/15	2013/14	2014/15
Addictions Studies Specialization - 0813	NR	80%	NR	70%	NR	80%	NR	80%
Human Services (Addictions Specialization) - 2007	NR	70%	NR	70%	NR	70%	NR	70%

NR: No Report